



University of Tennessee, Knoxville

TRACE: Tennessee Research and Creative Exchange

Chancellor's Honors Program Projects

Supervised Undergraduate Student Research
and Creative Work


5-2014

Printing the Bible

Megan R. Wu

University of Tennessee - Knoxville, mwu6@utk.edu

Follow this and additional works at: https://trace.tennessee.edu/utk_chanhonoproj

 Part of the [Ancient, Medieval, Renaissance and Baroque Art and Architecture Commons](#), [Biblical Studies Commons](#), [Christianity Commons](#), and the [Fine Arts Commons](#)

Recommended Citation

Wu, Megan R., "Printing the Bible" (2014). *Chancellor's Honors Program Projects*.
https://trace.tennessee.edu/utk_chanhonoproj/1721

This Dissertation/Thesis is brought to you for free and open access by the Supervised Undergraduate Student Research and Creative Work at TRACE: Tennessee Research and Creative Exchange. It has been accepted for inclusion in Chancellor's Honors Program Projects by an authorized administrator of TRACE: Tennessee Research and Creative Exchange. For more information, please contact trace@utk.edu.

Megan Wu

Studio Art: BA

Printing the Bible

Date: April 18, 2014

Faculty Mentor: Beauvais Lyons

Megan Wu
Studio Art: BA
Printing the Bible

This body of work stemmed from personal reflection on the concrete imagery and loaded emotion that is ingrained in many Biblical stories. Although many famous artists (Durer, Dore, Rembrandt, Masaccio etc.) have preceded me in printing and painting Biblical imagery, I believe that the Bible can continue to be interpreted many different ways, both in peoples' walk with God and in artwork. Thus, in my work, I have chosen to focus on intimacy between the people interacting in each scenario. I believe that this intimacy is created in relationships, and in my art I have selectively chosen particularly salient relationships that describe love and conflict.

My series uses a variety of printmaking media to suit the purpose of each story. For instance, for the story of Cain and Abel, I created a linoleum print, cut with striking contrasts and bold, aggressive marks to display the aggression that made up the startling first murder. I created a soft intaglio print on grey paper to recreate the quiet and unbeknownst intimacy of David and Bathsheba.

In creating this series, I was influenced by several specific works of art. The first two were the prints "World destroyed by water" and "The Deluge" by Gustave Dore. These prints capture the violence and emotion present at the flood. Another work of art that influenced me is "Expulsion from Paradise" by Masaccio. This painting draws me into the story through Adam and Eve's intense emotions.

Bibliography

Masaccio, . *Adam and Eve Expelled from Paradise*. 2005. Photograph. Art and the BibleWeb. 25 Apr 2014. <<http://www.artbible.info/art/large/292.html>>.

Durer, Albrecht. *The Deluge*. N.d. Photograph. Bible Illustrations by DoreWeb. 25 Apr 2014.
<http://www.creationism.org/images/DoreBibleIllus/aGen0803Dore_TheDeluge.jpg>.

Durer, Albrecht. *The World Destroyed by Water*. N.d. Photograph. Bible Illustrations by DoreWeb. 25 Apr 2014.
<http://www.creationism.org/images/DoreBibleIllus/aGen0724Dore_TheWorldDestroyedByWater.jpg>.

Documentation of Project:

David's Sin

Intaglio

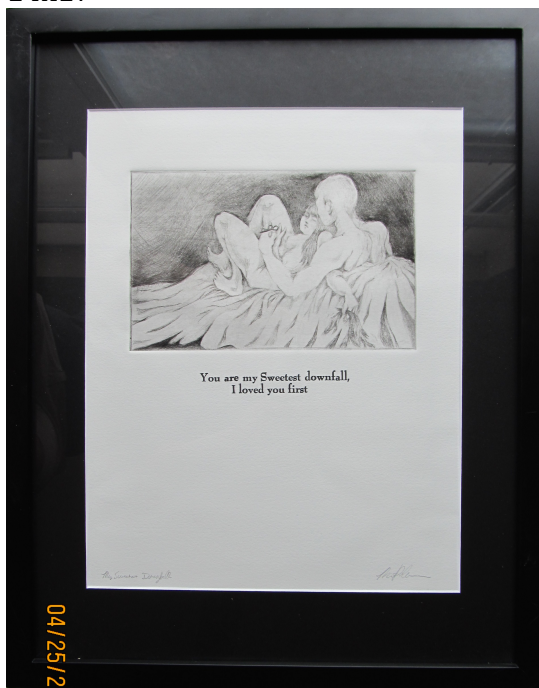
14x17



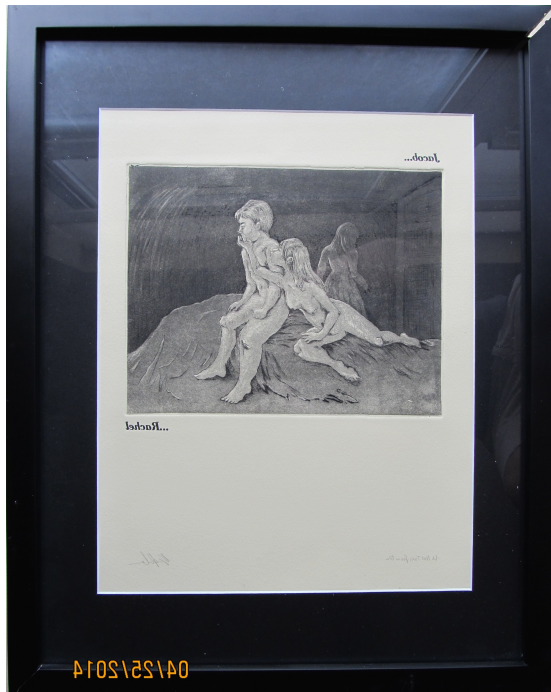
My Sweetest Downfall

Drypoint

14x17



Do Not Turn from Me
Aquatint and Etching
14x17



The Shame of Man
Lithography
18x24



From the Paw of the Lion,
Screenprint
18x24



The Tiller of the Ground
Linoleum Print
12x16

