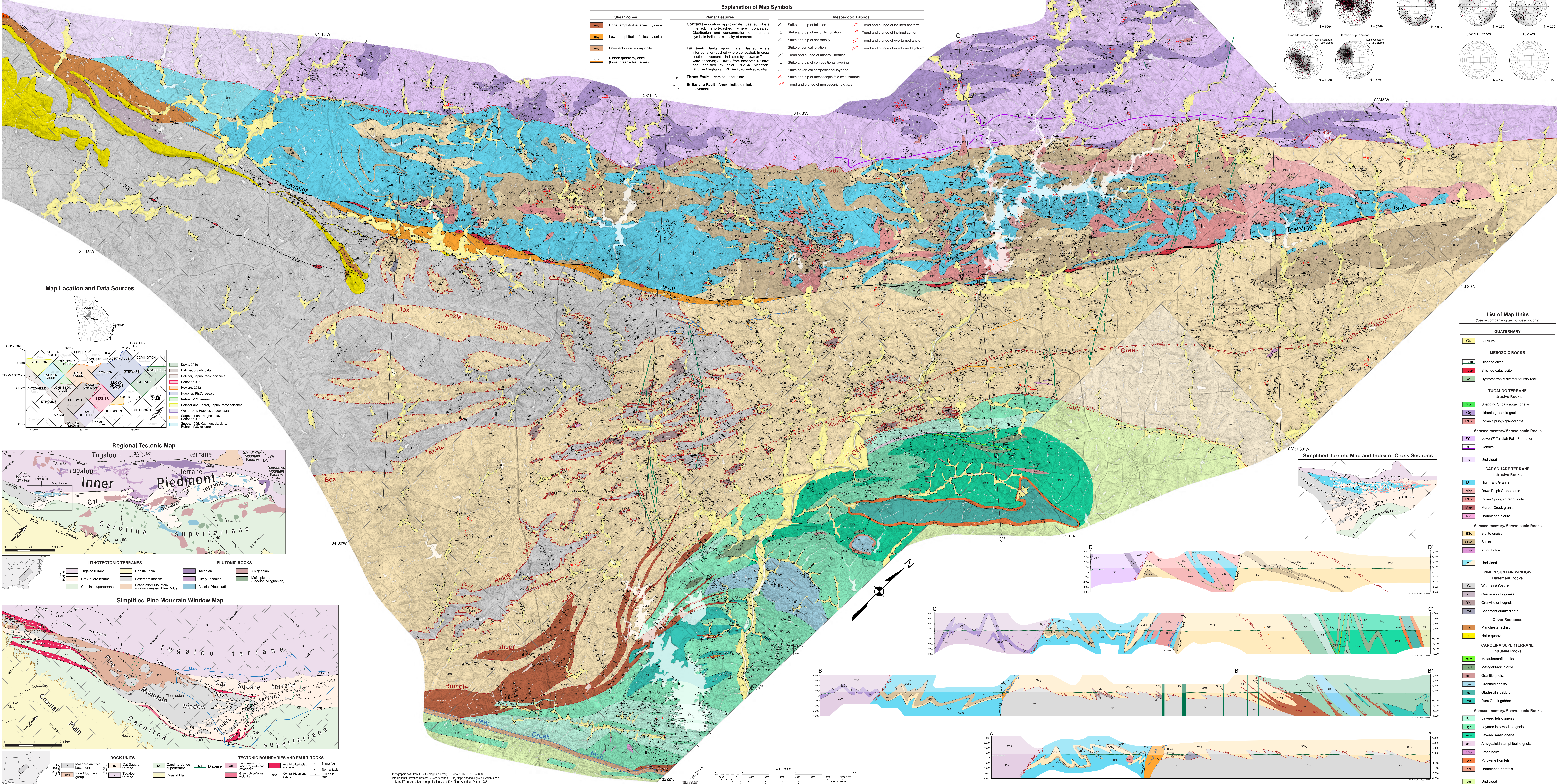


Detailed geologic map of the Inner Piedmont and Carolina superterrane at the northeast end of the Pine Mountain window, Georgia

Matthew T. Huebner, Justin R. Rehner, Robert D. Hatcher, Jr., and Andrew L. Wunderlich

Tectonics and Structural Geology Research Group, Department of Earth and Planetary Sciences
University of Tennessee, Knoxville, TN 37996-1410

with contributions from Robert J. Hooper, Christopher W. Howard, Brittany A. Davis,
Thomas E. West, Jr., Deana Sneyd, and Randy Kath



Topographic base from U.S. Geological Survey US Topo 2011-2012, 1:24,000 with National Elevation Dataset (30 arc second, 1000 ft) data. Data location model: Universal Transverse Mercator projection, zone 17N, North American Datum 1983