

84°15'W

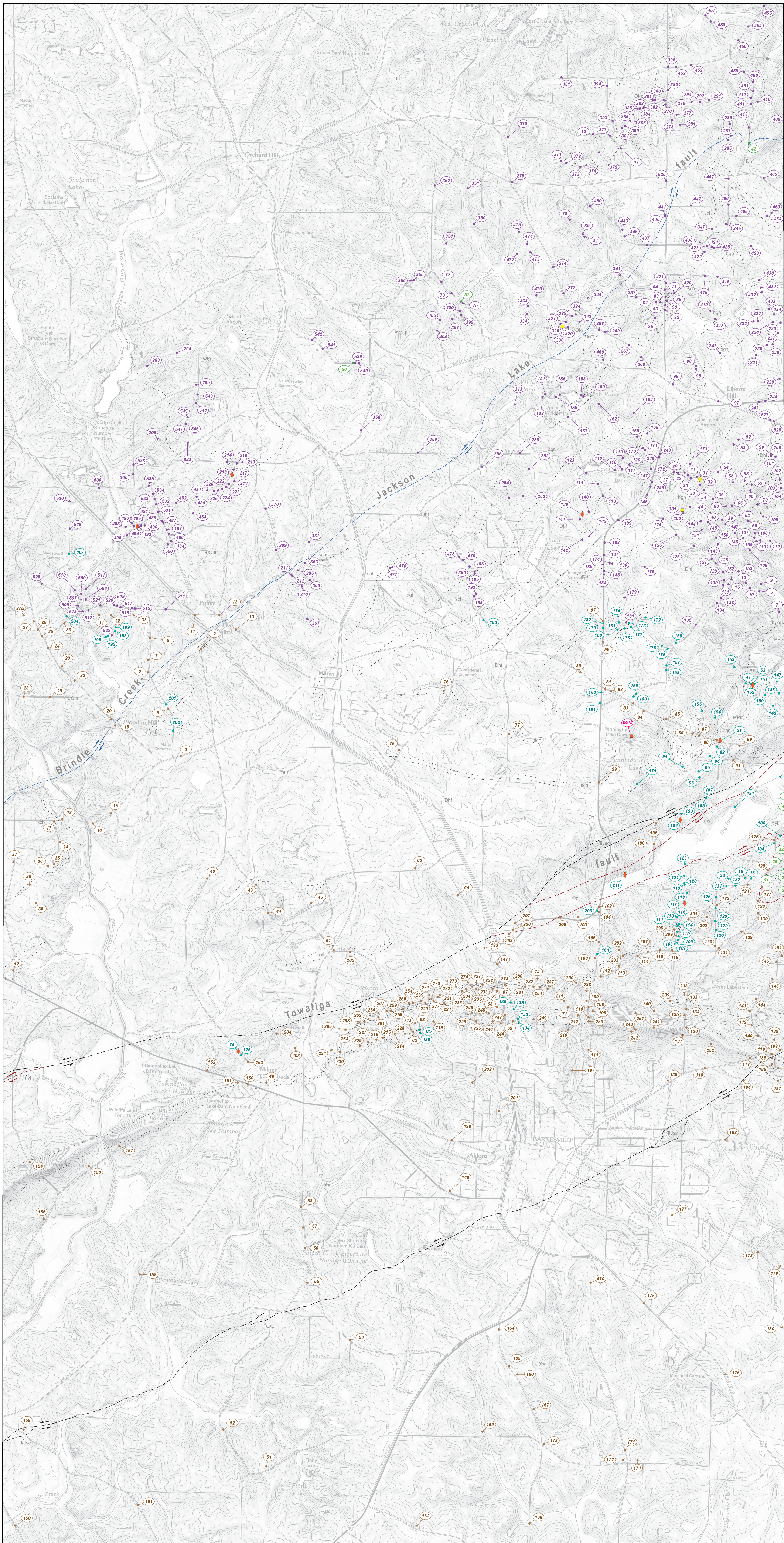
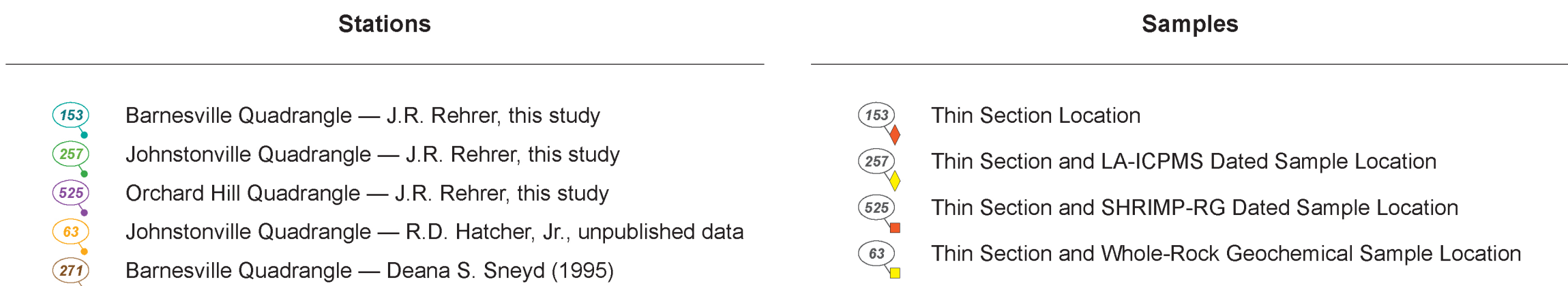
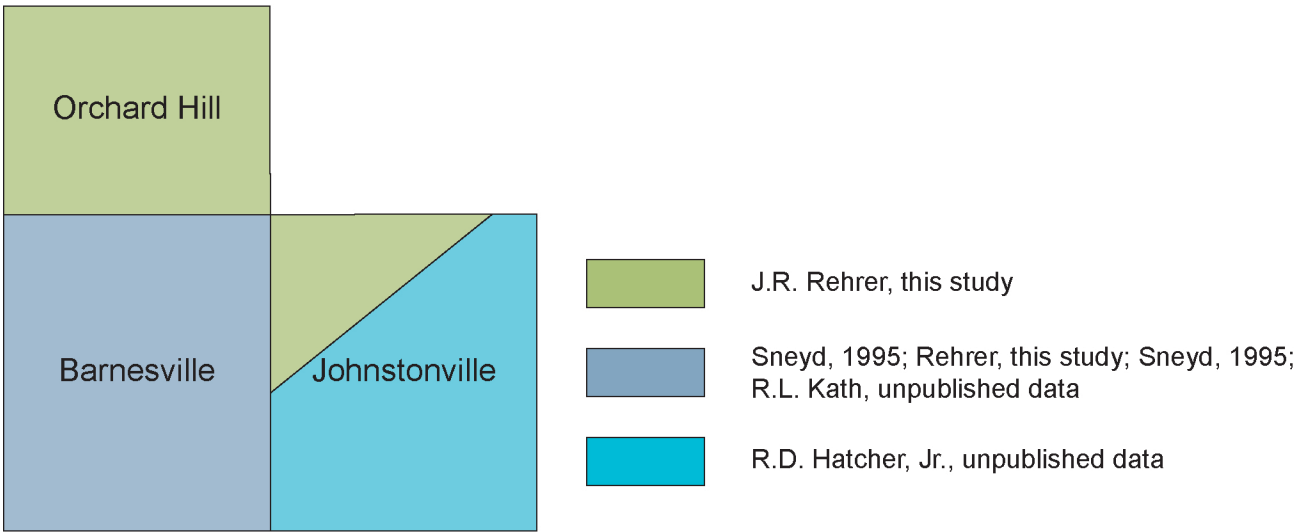


Plate II

Station Geologic Map of the Barnesville, Johnstonville, and a Portion of the Orchard Hill Quadrangles, Central Georgia



Quadrangle Locations and Data Sources

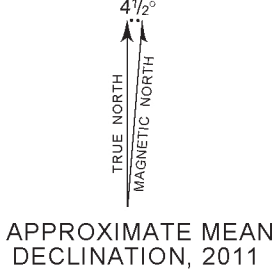
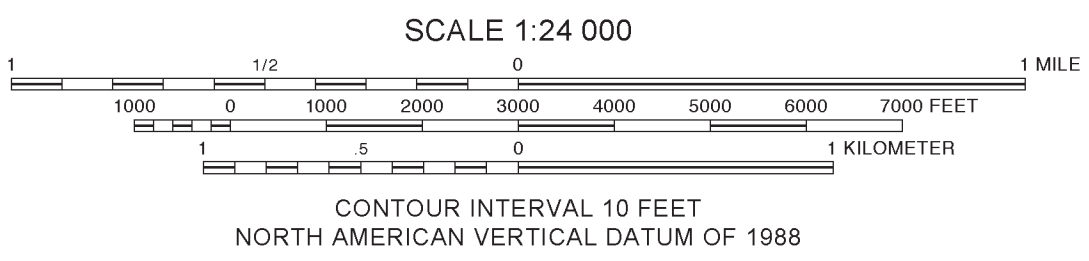


Base from U.S. Geological Survey, US Topo 2011-2012, 1:24,000 with National Elevation Dataset 10 m slope-shaded digital elevation model Universal Transverse Mercator projection, zone 16N, 1927 North American Datum



Griffis North	Lewis	Locust Grove	Jackson
Griffis South	Orchard Hill	High Falls	Jordan Springs
Zebulon	Barnesville	Abbeville	Forsyth
Thomson	Yatesville	Okeech	Sherr

ADJOINING 7.5' QUADRANGLES



APPROXIMATE MEAN DECLINATION, 2011

Geologic mapping by Justin R. Rehner in 2011 and 2012, with contributions by Robert D. Hatcher, Jr. (Johnstonville quadrangle), and by Deanna S. Sneyd and Randy L. Kath (Barnesville quadrangle). Cartographic assistance by Andrew L. Wunderlich.