



University of Tennessee, Knoxville
**TRACE: Tennessee Research and Creative
Exchange**

L. R. Hesler's Mushroom Notebooks

University of Tennessee Herbarium

November 2013

Conocybe Notebook 2

L. R. Hesler

Follow this and additional works at: https://trace.tennessee.edu/utk_hesler

Recommended Citation

Hesler, L. R., "Conocybe Notebook 2" (2013). *L. R. Hesler's Mushroom Notebooks*.
https://trace.tennessee.edu/utk_hesler/26

This Conocybe is brought to you for free and open access by the University of Tennessee Herbarium at TRACE: Tennessee Research and Creative Exchange. It has been accepted for inclusion in L. R. Hesler's Mushroom Notebooks by an authorized administrator of TRACE: Tennessee Research and Creative Exchange. For more information, please contact trace@utk.edu.

CONOCYBE Fayod

Conocybe subovalis Kühner, Encyclopédie Mycologique 7:69. 1935.
 (Galera tenera (Fries ex Schaeffer) Kühner var.
subovalis Kühner)

C - 11

PILEUS fleshy and fragile; unicolorous; glabrous; 2-4 cm. broad when expanded; at first conical and moist, then convex to subumbonate and dry; yellow-tan when young, then brownish-tan, (becoming brown upon drying); margin browning at maturity; striate from margin to one-half of the distance to center; context thin (0.1 cm.), white.

LAMELLAE (adnexed; entire; ventricose; close; to 0.5 cm. broad; white when young, tan when mature. LAMELLULAE in two series.

STIPE central; equal; brittle; glabrous; minutely striate; hollow; 4-10 X 0.1 - 0.3 cm.; at first whitish yellow, when mature yellow tan to brown;; base abruptly bulbous; bulb white, floccose, 0.3 - 0.9 cm. broad.

ANNULUS none.

ODOR none.

TASTE none.

SPORE DEPOSIT earth brown.

BASIDIOSPORES (2% KOH):

cinereous (rusty brown), smooth, obovate, apiculate, apex truncate with pore, wall approx. 0.6 μ thick except at apical pore, non-amyloid, green in cresly blue,

10.8	12.0	12.6	10.8	11.4	12.0	12.0	μ
6.0			6.6			7.2	

6.0 - 7.2 X 10.8 - 12.6 μ

PILOCYSTIDIA (2% KOH):

conspicuous in radial sections of young pilei but not seen in mature pilei, ~~frequent~~ infrequent amongst napiform cells of epicutis, tibiiform to lecythiform, darker brown than cells of epicutis, capitate, neck which tapers from enlarged base to capitulum is longer than in the cheilocystidia, long-pedicellate to short-pedicellate, thin-walled, size: (width of enlarged base - length - width of capitulum) 10.8 - 41.4 - 5.4, 9.9 - 36.0 - 4.5, 9.0 - 37.8 - 4.5, 8.1 - 39.6 - 4.5, 9.0 - 32.4 - 4.5, 7.2 - 36.9 - 4.5 μ , 7.2 - 10.8 X $\frac{3.24}{32.4}$ - 41.4 μ

Conocybe subovalis Kühner
C-11

CHEILOCYSTIDIA (2% KOH):

abundant, lecythiform, apedicellate, hyaline, (wall thickened and yellow-brown at base of constricted portion,)

14.4	16.2	18.0	19.8	21.6	μ
<hr/>			<hr/>		
9.0			10.8		

9.0 - 10.8 X 14.4 - 21.6 μ apex: 3.6 - 5.4 μ

CAULOCYSTIDIA (2% KOH):

Type I: frequent, lecythiform, similar to cheilocystidia,

Type II: infrequent, hyaline, apex as in cheilocystidia, base much elongated, irregularly clavate-cylindrical, 12.0 X 60.0 μ.

PLEUROCYSTIDIA none.

BASIDIA (2% KOH) with 4 sterigmata, $\frac{19.8}{9.0}$ $\frac{21.6}{9.9}$ μ

EPICUTIS OF PILEUS (2% KOH):

a single layer of napiform cells, light yellow-brown, thin-walled,

Young Pilei:

25.2	30.6	36.0	37.8	43.2	34.2	μ
12.6	14.4		16.2	18.0	19.8	

12.6 - 19.8 X 25.2 - 43.2 μ

Mature Pilei:

32.4	27.0	32.4	54.0	μ
21.6	23.4			

21.6 - 23.4 X 27.0 - 54.0 μ

PILEUS TRAMA (2% KOH):

vesiculose in radial and tangential sections, hyaline, thin-walled.

LAMELLA TRAMA (2% KOH):

mediostratum very poorly developed, the vesiculose, hyaline hymenopodia appearing to be continuous across the trama.

Conocybe subovalis Kühner

C-11

CONTEXT OF STIPE (2% KOH) in x. s. view:

cells several sided (5 - 6 - 9 - 10), with smaller "companion cells", wall cinereous, appearing thick-walled where walls of two cells are in contact, wall actually approx. 0.6 μ ; diameter of cells decreasing and hence wall appearing thicker in extreme outer portion, cells becoming compressed near central cavity of stipe,

<u>10.8</u>	<u>21.6</u>	<u>19.8</u>	<u>27.0</u>	<u>25.2</u>	μ
10.8	12.6	19.8		21.6	

10.8 - 21.6 X 10.8 - 27.0 μ

Substratum soil in pasture.

Locality University of Tennessee Cherokee Farm, Knox County, Knoxville, Tennessee.

Collected By T. H. Campbell

Determined By A. H. Smith

Date October 7, 1958

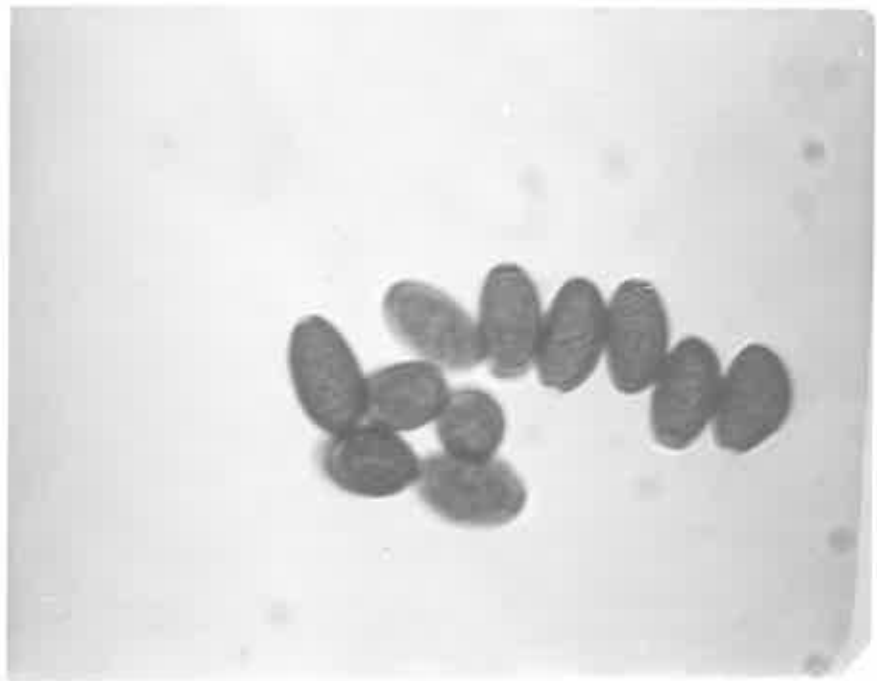
Comments:

1. According to Singer (p. 482), Conocybe lacks pilocystidia. The occurrence of pilocystidia in this collection suggests that other collections should be checked in this connection, since this is one of the few characters mentioned by Singer which separate Conocybe from Pholiotina. The lamella trama in C-11, however, appears to be typical of Conocybe and not of Pholiotina.
2. Previously collected by A. J. Sharp, October 22, 1949 (Tennessee # 19488) in a lawn, Knoxville, Tennessee and identified by A. H. Smith as Galera tenera var. subovalis Kühner (= Conocybe tenera var. subovalis Kühner).

C-11



Conocybe subovalis Kuhner
C-11

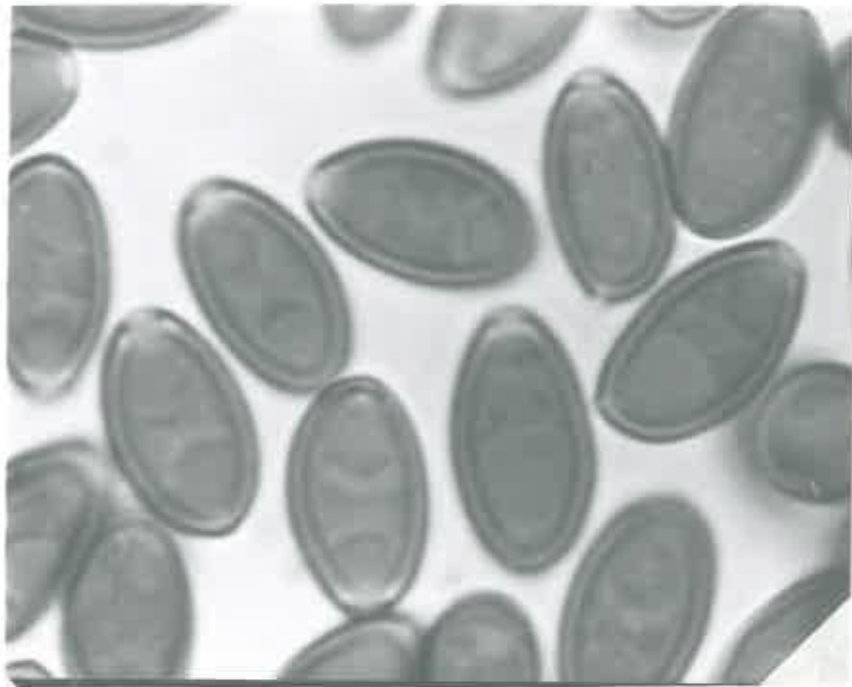


Conocybe subovalis Kuhner

C-11

basidiospores 1300X

2% KOH



Conocybe subovalis Kuhner

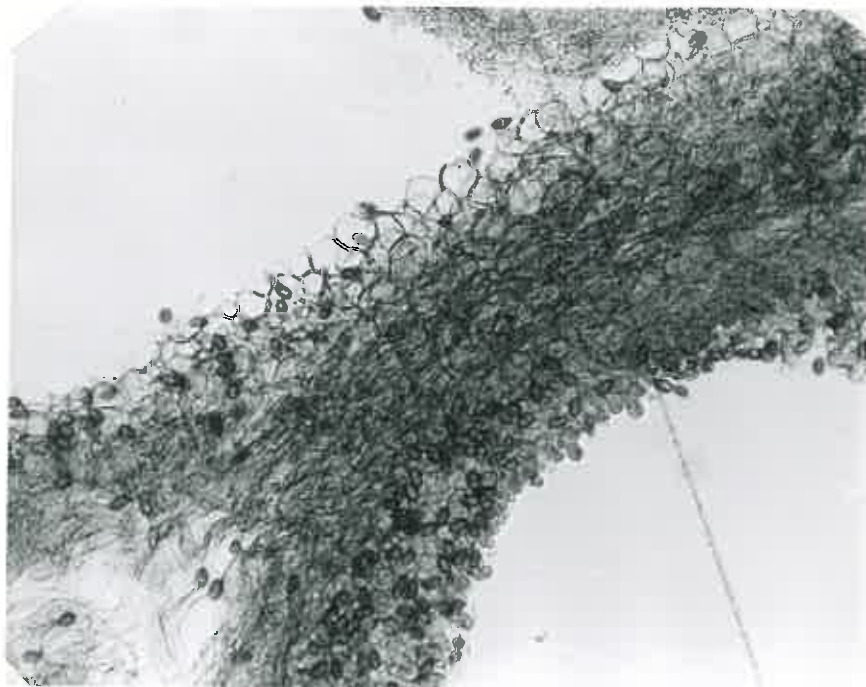
C-11

basidiospores 3420X

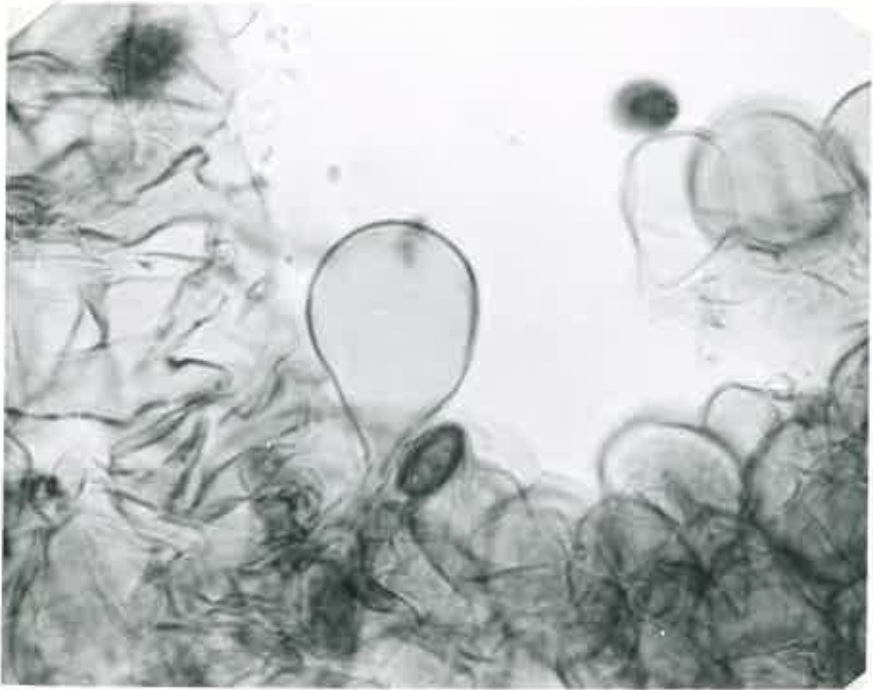
Meizer's Reagent



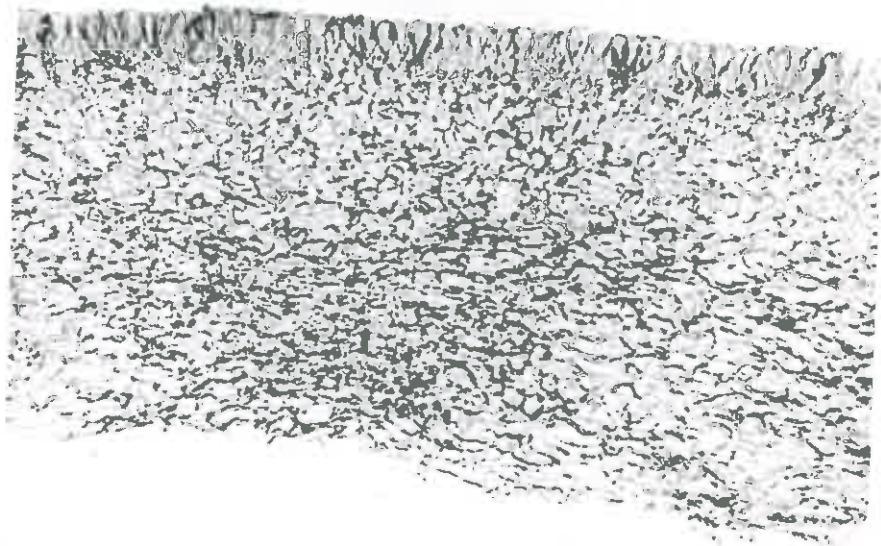
Conocybe subovalis Kuhner
C-11
Basidiospores 2280X
2% KOH



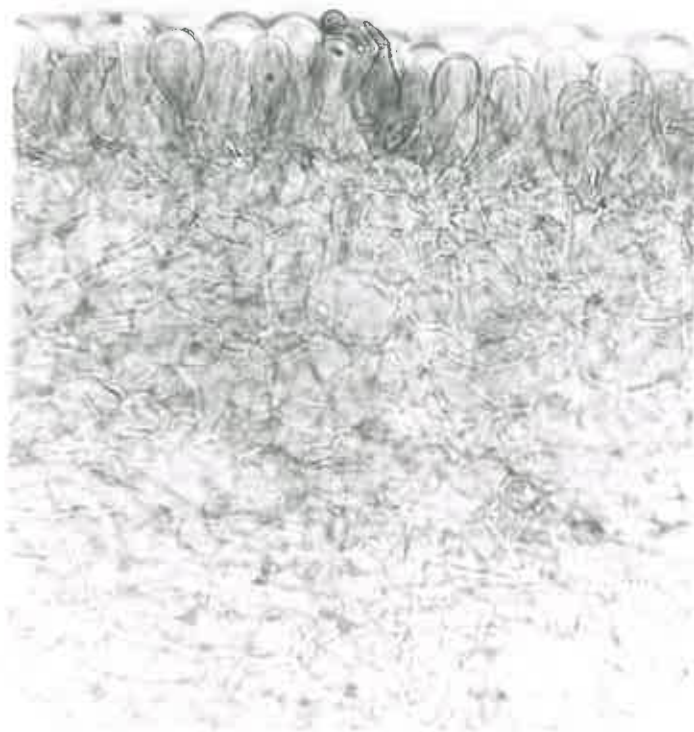
Conocybe subovalis Kuhner
C-11
tangential section pileus 285X
Congo Red



Conocybe subovalis Kuhner
C-11 *epicentris*
cell of pileus ~~cuticle~~ 1250X
Congo Red



Conocybe subovalis Kuhner
C-11
epicutis, context 285 X
radial section
2% KOH



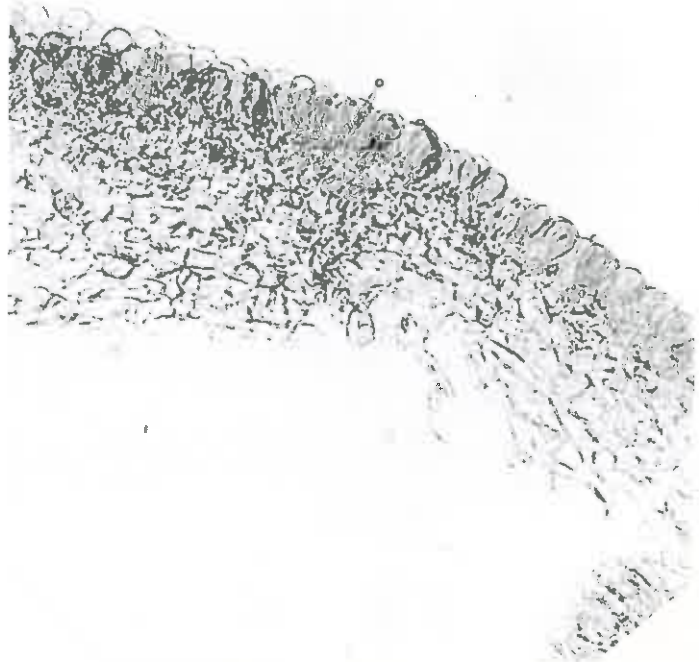
Conocybe subovalis Kuhner

C-11

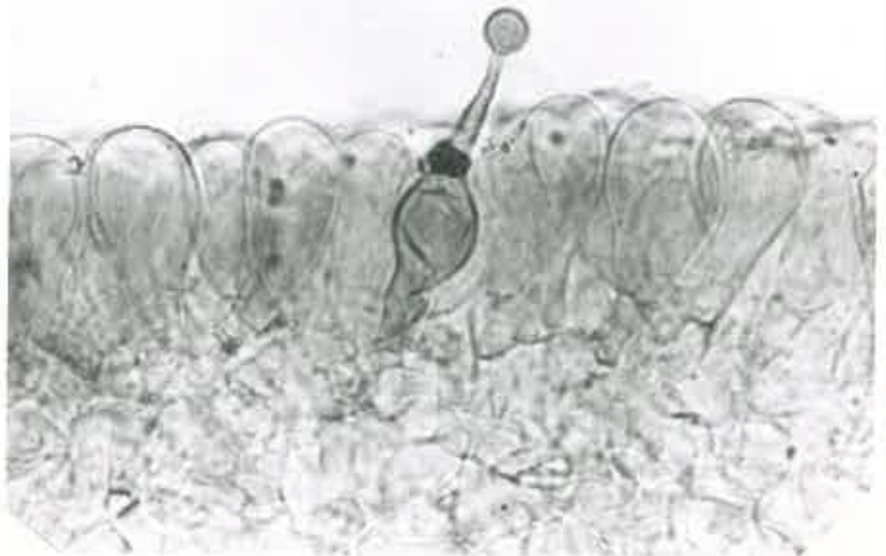
epicutis, pilocystidium, context 570X

radial section

2% KOH



285X



1250X

Conocybe subovalis Kuhner

C-11

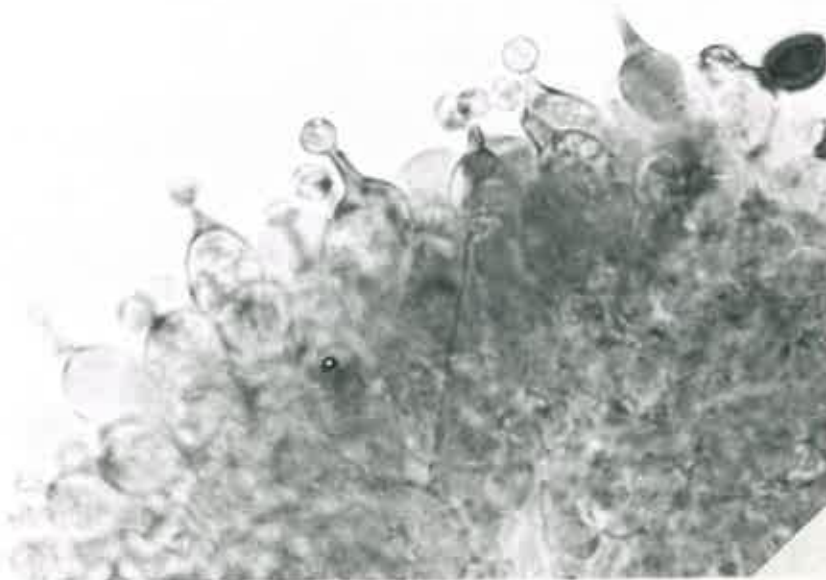
pilocystidium, epicutis, context

radial section

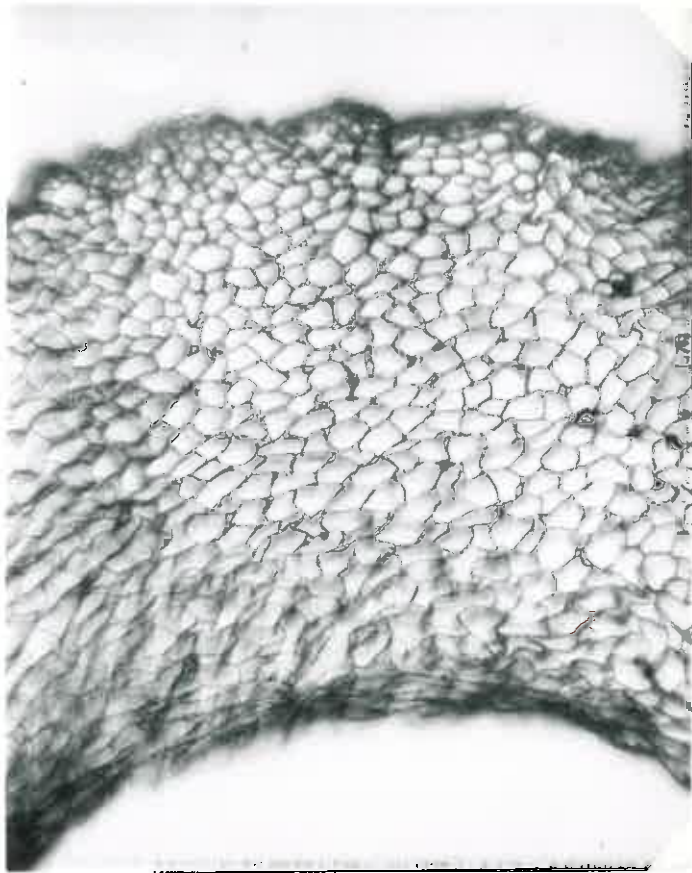
2% KOH



1700X



1250X
Conocybe subovalis Kuhner
C-11
cheilocystidia
Congo Red



Conocybe subovalis Kuhner

C-11

x.s. stipe 285X

2% KOH