



University of Tennessee, Knoxville
**TRACE: Tennessee Research and Creative
Exchange**

UTK Fact Book

Office of Institutional Research and
Assessment

2002

Fact Book: 2002-2003

The Office of Institutional Research and Assessment

Follow this and additional works at: https://trace.tennessee.edu/utk_factbook



Part of the [Education Commons](#)

Recommended Citation

The Office of Institutional Research and Assessment, "Fact Book: 2002-2003" (2002). *UTK Fact Book*.
https://trace.tennessee.edu/utk_factbook/12

This Report is brought to you for free and open access by the Office of Institutional Research and Assessment at TRACE: Tennessee Research and Creative Exchange. It has been accepted for inclusion in UTK Fact Book by an authorized administrator of TRACE: Tennessee Research and Creative Exchange. For more information, please contact trace@utk.edu.

LD

5282.9

.I58F23

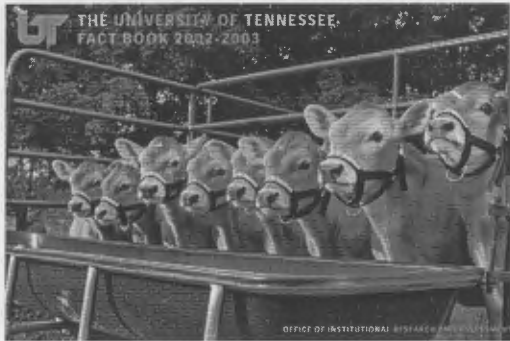
2002/03

UT KNOXVILLE LIBRARY



3 9029 03015730 3

THE UNIVERSITY OF TENNESSEE
FACT BOOK: 2002-2003



UT
P. 5282
E47821.
E002/500*

TABLE OF CONTENTS

Introduction

Table of Contents	i
Preface	ii

Student Data

Enrollment by Full-Time/Part-Time, Level, Gender, and Race, Fall 2002	1
Full-Time Equivalent Enrollment by Full-Time/Part-Time, Level, Gender, and Race, Fall 2002	2
Enrollment by Level, College, Race, and Gender, Fall 2002	3
Enrollment by Age, Level, and Gender, Fall 2002	4
Distribution of Student Credit Hour Loads, Fall 2002	5
Student Credit Hours by Level, College, and Term, FY 1998-2002	6
Top 10 Feeder Countries, States, and Tennessee Counties, Fall 2002	7
Enrollment by County, Fall 2002	8
Enrollment by State, Fall 2002	9
Enrollment by Country, Fall 2002	10
Enrollment by Race and Gender, Fall 1988-2002	11
Total Enrollment by Level, Full-Time and Part-Time, Fall 1998-2002	12
First-Time Freshmen Enrollment by College, Race, and Gender, Fall 2002	13
Applied, Admitted, and Enrolled Freshmen, Fall 1983-2002	14
Average Test Score, High School GPA, and Class Ranking for First-Time Freshmen, Fall 1989-2002	15
Average Equivalent ACT Scores, High School GPA and Class Ranking for First-Time Freshmen, Fall 1987-2002	16
Undergraduate Transfer Enrollment by College, Race, and Gender, Fall 2002	17
Undergraduate Transfer Enrollment, Top Ten Feeder Institutions, Fall 2002	18
Applied, Admitted, and Enrolled Undergraduate Transfer Students, Fall 1983-2002	19
Undergraduate Enrollment by Race and Gender, Fall 1988-2002	20
First-Time Graduate and Professional Headcount by College, Race, and Gender, Fall 2002	21
Graduate Enrollment by Race and Gender, Fall 1988-2002	22

Faculty/Staff Data

Full-Time Instructional Faculty by Appointment Type, Rank, Tenure Status, and College, Fall 2002	23
Tenured and Non-Tenured Full-Time Instructional Faculty, Fall 1995-2002 (as Percentages)	24
Full-Time Instructional Faculty by Gender, Highest Degree Held, and Race, Fall 2002	25
Age and Length of Service of Full-Time Instructional Faculty, Fall 1996-2002 (as Percentages)	26
Distribution of Employees by EEO Category, Fall 2002	27
Chairs of Excellence Filled as of October 2002	28

Financial Data

Unrestricted Expenditures and Transfers by Budgetary Function with Percent Distribution of Expenditures, FY 1998-2003	29
Unrestricted Current Revenue by Budgetary Function and Revenue Dollars per Full-Time Equivalent Student, FY 1998-2003	30
Number of Contributors and Gifts, FY 1977-2002	31
Average Salaries of Full-Time Instructional Faculty by College and Rank, FY 2002-2003	32
Median Graduate Assistant Stipends, FY 1984-2003	33
Student Tuition by Level, Academic Year 2002-2003	34
Need-Based Financial Aid, Academic Year 2002-2003	35

Facilities Data

Number and Percent of Occupancy for Student Residence Halls and Married/Graduate Student Housing, Fall 2002	36
Main Library and Branches Holdings and Expenditures, FY 1998-2002	37
Law Library Holdings and Expenditures, FY 1998-2002	38
Health Science Center Library Holdings and Expenditures, FY 1998-2002	39
Space Institute Library Holdings and Expenditures, FY 2001-2002	40
University of Tennessee Facilities and Acreage, Fall 2002	41

Outcomes Data

One Year Retention Rates, First-Time, Full-Time Freshmen, Fall Terms 1983-2001	42
Four Year Graduation Rates, First-Time, Full-Time Freshmen, Fall Terms 1983-1998	43
Five Year Graduation Rates, First-Time, Full-Time Freshmen, Fall Terms 1983-1997	44
Six Year Graduation Rates, First-Time, Full-Time Freshmen, Fall Terms 1983-1996	45
Graduation Rates, First-Time, Full-Time Freshmen, Fall Terms 1985-1998	46
Summary of Degrees Conferred by Discipline, FY 1998-2002	47
Summary of Degrees Conferred by Level, FY 1984-2002	48
Distribution of Alumni by State, Fall 2002	49
Distribution of Alumni by County, Fall 2002	50
Degrees Awarded by Major, FY 1996-2002	51-61

Research and Public Service Data

Research Awards, by Campus, FY 2001	62
Research Awards, by Campus, FY 1997-2001	63
Research Awards, by Source, FY 1997-2001	64
Institute for Public Service Performance Data, FY 1998-2002	65
College of Veterinary Medicine, Analysis of Patients by Species, FY 2001-2002	66
Agricultural Extension Service	67

at a 92⁰⁰ i

44 = 4409.56 7540 = 8,124

7475

UT EEO/TITLE IX/SECTION 504 POLICY STATEMENT

The University of Tennessee does not discriminate on the basis of race, sex, religion, national origin, age, handicap, or veteran status in provision of educational opportunities or employment opportunities and benefits.

The University of Tennessee does not discriminate on the basis of sex or handicap in its educational programs and activities, pursuant to requirements of Title IX of the Educational Amendments of 1972, Public Law 92-318, and Section 504 of the Rehabilitation Act of 1973, Public Law 93-112, and the Americans With Disabilities Act of 1990, Public Law 01-336, respectively. The policy extends to both employment by and admission to the University.

Inquiries concerning Title IX, Section 504, and the Americans With Disabilities Act of 1990 should be directed to the Office of Equity and Diversity, 1840 Melrose Avenue, The University of Tennessee, Knoxville, TN 37996-3560; or telephone (865) 974-2498. Charges of violation of the above policy should also be directed to the Office of Equity and Diversity.

E01-0160-002-02

PREFACE

The **2002-2003** edition of the University of Tennessee **Fact Book** comes with a new look, reflecting recent changes in the university's organizational structure. The University of Tennessee encompasses programs in Knoxville, Memphis, and Tullahoma, as well as the Institute of Agriculture, and the Institute for Public Service. These changes are incorporated in this edition of the Fact Book. For this reason, some of the data reported for 2002-2003 will vary substantially from previous years. For example, the number of professional degrees granted shows a marked increase because of the addition of the degrees awarded at the Health Science Center. The reader is advised to note the altered metric when extracting information from the Fact Book. Please contact the Office of Institutional Research and Assessment if you are seeking information arrayed differently than found in the Fact Book.

The University of Tennessee e-Fact Book is presented in Adobe PDF format. It is best navigated using the **Table of Contents** within the **Bookmark pane** as found in Adobe Reader 5.0.5. Use the links at the left on this page to begin navigation.

Finally, the production of a compendium such as this represents the good will and cooperation of dozens of people across the University of Tennessee and I am grateful for their help. This was truly a community effort. Within the Office of Institutional Research and Assessment, Elizabeth Pemberton has maintained her usual high standards as editor, and Mozhgan Shahidi made a major contribution by overseeing the technical and production aspects of this project.

As always, I solicit your comments and suggestions regarding the Fact Book. Please contact me at dscroggs@tennessee.edu, (865) 974-4373, or at 211 Conference Center, 600 Henley Street. You are welcome to bookmark our website at <http://oira.tennessee.edu>.

Don Scroggins, Director
Office of Institutional Research and Assessment

ENROLLMENT BY FULL-TIME/PART-TIME, LEVEL, GENDER, AND RACE FALL 2002

	Total	GENDER		RACE (U.S. Residents only)						International
		Men	Women	White	Black	Hispanic	Asian	Am. Indian	Not Reported	
TOTAL ENROLLMENT	27,971	13,285	14,686	23,442	1,964	315	706	100	278	1,166
Full-Time	23,829	11,425	12,404	19,993	1,719	258	616	86	231	926
Part-Time	4,142	1,860	2,282	3,449	245	57	90	14	47	240
TOTAL UNDERGRADUATE	19,956	9,710	10,246	17,289	1,374	238	510	76	159	310
Full-Time	18,054	8,787	9,267	15,653	1,267	208	456	67	131	272
Part-Time	1,902	923	979	1,636	107	30	54	9	28	38
First-Time Freshmen	3,682	1,787	1,895	3,141	320	52	102	11	33	23
Full-Time	3,638	1,761	1,877	3,105	319	51	99	11	31	22
Part-Time	44	26	18	36	1	1	3	0	2	1
Other Freshmen	1,683	889	794	1,480	127	12	30	6	8	20
Full-Time	1,602	844	758	1,406	121	12	29	6	8	20
Part-Time	81	45	36	74	6	0	1	0	0	0
Sophomore	4,078	2,022	2,056	3,572	267	53	103	11	33	39
Full-Time	3,862	1,909	1,953	3,389	253	48	96	10	30	36
Part-Time	216	113	103	183	14	5	7	1	3	3
Junior	4,084	1,986	2,098	3,561	258	53	115	17	30	50
Full-Time	3,763	1,825	1,938	3,272	241	50	109	16	26	49
Part-Time	321	161	160	289	17	3	6	1	4	1
Senior	6,053	2,869	3,184	5,259	393	62	151	28	48	112
Full-Time	5,070	2,401	2,669	4,419	331	47	122	23	36	92
Part-Time	983	468	515	840	62	15	29	5	12	20
Other Undergraduate	376	157	219	276	9	6	9	3	7	66
Full-Time	119	47	72	62	2	0	1	1	0	53
Part-Time	257	110	147	214	7	6	8	2	7	13
TOTAL GRADUATE/PROFESSIONAL	8,015	3,575	4,440	6,153	590	77	196	24	119	856
Full-Time	5,775	2,638	3,137	4,340	452	50	160	19	100	654
Part-Time	2,240	937	1,303	1,813	138	27	36	5	19	202

SOURCE: Student Information System

NOTE: Includes Knoxville, Institute of Agriculture, Veterinary Medicine, Space Institute, and Health Science Center

**FULL-TIME EQUIVALENT ENROLLMENT
BY FULL-TIME/PART-TIME, LEVEL, GENDER, AND RACE, FALL 2002**

	Total	GENDER		RACE (U.S. Residents Only)						International
		Men	Women	White	Black	Hispanic	Asian	Am. Indian	Not Reported	
TOTAL ENROLLMENT	25,198	11,976	13,222	21,119	1,798	282	647	89	254	1,012
Full-Time	23,475	11,182	12,293	19,696	1,690	256	611	84	234	906
Part-Time	1,723	794	929	1,423	108	26	36	5	20	106
TOTAL UNDERGRADUATE	18,346	8,923	9,423	15,890	1,275	217	470	69	137	292
Full-Time	17,504	8,493	9,011	15,163	1,227	202	448	66	126	275
Part-Time	842	430	412	727	48	15	22	3	11	17
First-Time Freshmen	3,503	1,703	1,800	2,986	306	51	98	11	30	23
Full-Time	3,479	1,688	1,791	2,966	305	50	97	11	29	22
Part-Time	24	15	9	20	1	1	1	0	1	1
Other Freshmen	1,570	825	745	1,377	120	11	28	6	8	20
Full-Time	1,529	800	729	1,338	118	11	28	6	8	20
Part-Time	41	25	16	39	2	0	0	0	0	0
Sophomore	3,884	1,913	1,971	3,400	256	49	99	11	32	38
Full-Time	3,775	1,853	1,922	3,308	249	46	95	10	30	37
Part-Time	109	60	49	92	7	3	4	1	2	1
Junior	3,838	1,866	1,972	3,341	243	51	112	15	25	52
Full-Time	3,686	1,786	1,900	3,203	235	49	109	15	24	52
Part-Time	152	80	72	138	8	2	3	0	1	0
Senior	5,359	2,536	2,823	4,661	346	53	129	25	39	104
Full-Time	4,925	2,323	2,602	4,290	318	46	118	23	35	95
Part-Time	434	213	221	371	28	7	11	2	4	9
Other Undergraduate	192	80	112	125	4	2	4	1	3	55
Full-Time	110	43	67	58	2	0	1	1	0	49
Part-Time	82	37	45	67	2	2	3	0	3	6
TOTAL GRADUATE/PROFESSIONAL	6,852	3,053	3,799	5,229	523	65	177	20	117	720
Full-Time	5,971	2,689	3,282	4,533	463	54	163	18	108	631
Part-Time	881	364	517	696	60	11	14	2	9	89

SOURCE: Student Information System

NOTES: Due to rounding, totals may not add evenly; includes Knoxville, Institute of Agriculture, Veterinary Medicine, Space Institute, and Health Science Center

ENROLLMENT BY LEVEL, COLLEGE, RACE, AND GENDER FALL 2002

	TOTAL			WHITE			BLACK			HISPANIC			ASIAN			AMERICAN INDIAN			NOT REPORTED		
	TOTAL	MEN	WOMEN	TOTAL	MEN	WOMEN	TOTAL	MEN	WOMEN	TOTAL	MEN	WOMEN	TOTAL	MEN	WOMEN	TOTAL	MEN	WOMEN	TOTAL	MEN	WOMEN
UNIVERSITY TOTAL	27,971	13,285	14,686	23,690	11,353	12,337	2,016	764	1,252	368	182	186	1,460	794	666	101	42	59	336	150	186
UNDERGRADUATE TOTAL	19,956	9,710	10,246	17,383	8,560	8,823	1,399	584	815	263	131	132	630	307	323	76	32	44	205	96	109
GRADUATE/PROFESSIONAL TOTAL	8,015	3,575	4,440	6,307	2,793	3,514	617	180	437	105	51	54	830	487	343	25	10	15	131	54	77
UNDERGRADUATE																					
Agricultural Sciences & Natural Resources	839	457	382	798	438	360	25	10	15	4	1	3	2	2	0	2	2	0	8	4	4
Architecture & Design	428	204	224	391	183	208	16	6	10	6	2	4	9	9	0	4	2	2	2	2	0
Arts & Sciences	6,524	2,969	3,555	5,622	2,617	3,005	488	173	315	106	50	56	233	96	137	23	8	15	52	25	27
Business Administration	3,047	1,810	1,237	2,677	1,631	1,046	178	80	98	46	22	24	118	58	60	9	6	3	19	13	6
Communication & Information	1,387	478	909	1,238	435	803	88	26	62	18	9	9	25	5	20	5	0	5	13	3	10
Education, Health & Human Sciences	1,797	520	1,277	1,605	457	1,148	131	40	91	12	5	7	27	11	16	5	2	3	17	5	12
Engineering	1,718	1,391	327	1,427	1,172	255	158	111	47	25	21	4	94	77	17	5	3	2	9	7	2
Health Science Center	129	11	118	98	8	90	25	2	23	0	0	0	3	0	3	1	0	1	2	1	1
Nursing	633	59	574	560	55	505	44	4	40	3	0	3	15	0	15	2	0	2	9	0	9
Social Work	109	12	97	84	9	75	13	2	11	3	0	3	3	0	3	3	0	3	3	1	2
University	3,345	1,799	1,546	2,883	1,555	1,328	233	130	103	40	21	19	101	49	52	17	9	8	71	35	36
GRADUATE/PROFESSIONAL																					
Agricultural Sciences & Natural Resources	220	117	103	175	96	79	9	4	5	4	2	2	28	15	13	0	0	0	4	0	4
Architecture & Design	31	20	11	22	11	11	1	1	0	0	0	0	3	3	0	0	0	0	5	5	0
Arts & Sciences	1,333	677	656	1,047	525	522	55	26	29	29	11	18	159	96	63	5	2	3	38	17	21
Business Administration	535	354	181	414	283	131	19	10	9	10	8	2	78	44	34	2	1	1	12	8	4
Communication & Information	294	61	233	261	57	204	14	2	12	5	0	5	10	2	8	0	0	0	4	0	4
Education, Health & Human Sciences	1,334	369	965	1,149	326	823	90	24	66	12	2	10	62	12	50	3	1	2	18	4	14
Engineering	662	535	127	402	336	66	30	18	12	11	10	1	214	168	46	3	1	2	2	2	0
Intercollegiate Programs	28	17	11	18	10	8	0	0	0	0	0	0	10	7	3	0	0	0	0	0	0
Law	457	240	217	396	219	177	47	14	33	3	1	2	8	5	3	0	0	0	3	1	2
Health Science Center	1,909	928	981	1,378	705	673	243	68	175	17	9	8	241	130	111	9	5	4	21	11	10
Nursing	144	20	124	137	19	118	2	0	2	1	1	0	4	0	4	0	0	0	0	0	0
Social Work	475	63	412	360	48	312	94	10	84	6	2	4	2	0	2	1	0	1	12	3	9
Veterinary Medicine	276	70	206	260	65	195	2	0	2	2	1	1	1	1	0	0	0	0	11	3	8
University	317	104	213	288	93	195	11	3	8	5	4	1	10	4	6	2	0	2	1	0	1

SOURCE: Student Information System

NOTE: Includes Knoxville, Institute of Agriculture, Veterinary Medicine, Space Institute, and Health Science Center

ENROLLMENT BY AGE, LEVEL, AND GENDER FALL 2002

	TOTAL				UNDERGRADUATE				GRADUATE/PROFESSIONAL			
	TOTAL	MEN	WOMEN	PERCENT	TOTAL	MEN	WOMEN	PERCENT	TOTAL	MEN	WOMEN	PERCENT
TOTAL	27,971	13,285	14,686	100.0	19,956	9,710	10,246	100.0	8,015	3,575	4,440	100.0
LESS THAN 18	32	15	17	0.1	32	15	17	0.2	0	0	0	0.0
18	2,331	1,046	1,285	8.3	2,331	1,046	1,285	11.7	0	0	0	0.0
19	3,435	1,595	1,840	12.3	3,435	1,595	1,840	17.2	0	0	0	0.0
20	3,406	1,613	1,793	12.2	3,401	1,612	1,789	17.0	5	1	4	0.1
21	3,673	1,702	1,971	13.1	3,592	1,680	1,912	18.0	81	22	59	1.0
22	3,186	1,569	1,617	11.4	2,658	1,393	1,265	13.3	528	176	352	6.6
23	2,304	1,153	1,151	8.2	1,390	793	597	7.0	914	360	554	11.4
24	1,498	719	779	5.4	640	353	287	3.2	858	366	492	10.7
25	1,268	643	625	4.5	454	252	202	2.3	814	391	423	10.2
26	915	470	445	3.3	288	167	121	1.4	627	303	324	7.8
27	753	405	348	2.7	231	137	94	1.2	522	268	254	6.5
28	603	324	279	2.2	168	97	71	0.8	435	227	208	5.4
29	498	250	248	1.8	165	83	82	0.8	333	167	166	4.2
30	437	202	235	1.6	135	52	83	0.7	302	150	152	3.8
31	406	215	191	1.5	138	64	74	0.7	268	151	117	3.3
32	355	184	171	1.3	101	52	49	0.5	254	132	122	3.2
33	280	145	135	1.0	80	46	34	0.4	200	99	101	2.5
34	237	133	104	0.8	66	36	30	0.3	171	97	74	2.1
35	213	108	105	0.8	52	24	28	0.3	161	84	77	2.0
36	180	81	99	0.6	46	20	26	0.2	134	61	73	1.7
37	157	77	80	0.6	45	23	22	0.2	112	54	58	1.4
38	178	70	108	0.6	59	18	41	0.3	119	52	67	1.5
39	134	53	81	0.5	34	11	23	0.2	100	42	58	1.2
40	121	36	85	0.4	40	12	28	0.2	81	24	57	1.0
41 - 45	534	188	346	1.9	173	58	115	0.9	361	130	231	4.5
46 - 50	469	155	314	1.7	116	41	75	0.6	353	114	239	4.4
51 - 64	351	123	228	1.3	77	25	52	0.4	274	98	176	3.4
65 AND OVER	17	11	6	0.1	9	5	4	0.0	8	6	2	0.1

SOURCE: Student Record Master

NOTE: Includes Knoxville, Institute of Agriculture, Veterinary Medicine, Space Institute, and Health Science Center

DISTRIBUTION OF STUDENT CREDIT HOUR LOADS FALL 2002

CREDIT HOURS	TOTAL	UNDERGRADUATE						GRADUATE	PROFESSIONAL
		FRESHMAN	SOPHOMORE	JUNIOR	SENIOR	5TH YEAR	OTHER		
1	55	3	1	1	5	0	10	34	1
2	31	1	2	3	7	0	6	12	0
3	1,316	15	29	56	194	9	107	906	0
4	143	2	8	5	41	1	20	66	0
5	41	0	2	4	11	1	5	18	0
6	1,474	19	39	78	244	12	54	1,021	7
7	268	10	17	19	68	5	17	132	0
8	113	3	10	9	38	3	7	41	2
9	1,288	25	40	80	201	15	23	903	1
10	609	21	39	42	68	5	5	427	2
11	278	26	29	24	51	4	3	139	2
12	6,057	622	566	779	1,374	49	41	1,252	1,374
13	3,030	1,206	665	407	422	51	19	221	39
14	2,672	1,162	523	446	355	36	18	71	61
15	4,743	900	806	954	1,252	46	20	523	242
16	2,829	910	689	475	512	37	9	104	93
17	1,307	316	361	305	266	16	3	24	16
18	1,058	89	181	278	436	17	6	19	32
19	395	34	65	89	122	8	3	5	69
20	90	0	3	15	24	1	0	1	46
21	91	1	1	12	34	0	0	3	40
22	77	0	2	3	6	0	0	0	66
23	1	0	0	0	1	0	0	0	0
24	2	0	0	0	2	0	0	0	0
25	2	0	0	0	2	0	0	0	0
over 25	1	0	0	0	1	0	0	0	0
TOTAL	27,971	5,365	4,078	4,084	5,737	316	376	5,922	2,093
AVERAGE CREDIT HOURS	12.8	14.2	14.3	14.1	13.3	13.2	7.7	9.1	13.6

SOURCE: Student Information System

NOTE: Includes Knoxville, Institute of Agriculture, Veterinary Medicine, Space Institute, and Health Science Center

**STUDENT CREDIT HOURS
BY LEVEL, COLLEGE, AND TERM
FY 1998-2002**

	SUMMER TERM					FALL TERM					SPRING TERM				
	1997	1998	1999	2000	2001	1997	1998	1999	2000	2001	1998	1999	2000	2001	2002
UNIVERSITY TOTAL	64,138	66,460	64,636	62,690	61,220	306,923	315,674	328,687	325,232	328,972	276,241	296,351	305,105	302,838	307,023
UNDERGRADUATE TOTAL	43,966	46,224	44,472	43,550	42,687	256,546	264,619	277,953	275,060	278,412	228,177	246,307	255,672	254,722	256,906
GRADUATE/PROFESSIONAL TOTAL	20,172	20,236	20,164	19,140	18,533	50,377	51,055	50,734	50,172	50,560	48,064	50,044	49,433	48,116	50,117
UNDERGRADUATE															
Agricultural Sciences & Natural Resources	28	32	50	38	56	8,293	7,505	7,920	7,636	8,759	6,996	7,340	7,223	7,072	8,427
Architecture & Design	485	589	678	517	555	4,503	4,966	5,168	5,082	4,727	4,030	4,691	4,770	4,554	4,392
Arts & Sciences	26,556	26,777	25,336	25,233	24,196	163,537	167,111	176,084	173,573	173,696	142,759	150,051	157,069	156,067	155,484
Business Administration	6,642	6,749	7,241	7,368	7,559	25,374	28,117	30,211	31,795	33,146	24,946	27,915	30,801	31,774	32,593
Communication & Information	828	2,312	2,169	2,322	2,398	9,527	10,548	11,164	11,760	11,998	5,914	10,446	10,810	11,020	11,507
Education, Health & Human Sciences	6,367	6,584	6,382	5,790	5,869	23,955	24,275	24,406	24,395	24,337	23,363	28,255	27,354	27,235	26,822
Engineering	2,548	2,546	2,156	1,820	1,588	13,573	13,408	13,417	12,453	12,492	11,869	11,754	11,772	11,197	11,449
Intercollegiate Programs	0	27	15	12	0	2,881	3,623	4,475	3,787	4,183	852	1,129	1,028	982	1,102
Nursing	446	554	402	381	403	3,506	3,361	3,608	3,368	3,492	2,903	3,254	3,543	3,723	3,625
Social Work	54	42	36	69	60	657	780	669	543	771	630	679	563	540	693
University	12	12	7	0	3	740	925	831	668	811	3,915	793	739	558	812
GRADUATE/PROFESSIONAL															
Agricultural Sciences & Natural Resources	544	378	430	388	357	1,103	1,183	1,223	1,160	1,017	1,101	1,346	1,230	1,101	1,113
Architecture & Design	211	131	106	16	24	819	623	228	288	334	647	470	252	317	390
Arts & Sciences	5,009	4,652	4,466	4,292	3,981	12,097	11,288	10,984	10,861	11,243	11,049	10,700	10,755	10,296	10,957
Biomedical Science	24	36	60	0	0	60	39	0	0	0	45	45	6	0	0
Business Administration	1,353	1,801	1,642	1,580	1,517	5,489	6,469	7,181	6,845	6,552	4,877	6,172	6,053	5,952	6,193
Communication & Information	848	709	959	908	689	1,719	1,451	1,511	1,418	1,379	1,455	1,524	1,518	1,342	1,374
Education, Health & Human Sciences	8,768	8,897	8,875	8,350	8,205	11,290	11,565	11,009	10,925	10,159	11,614	12,078	11,602	11,385	11,020
Engineering	1,446	1,419	1,438	1,522	1,370	2,936	3,331	3,376	3,200	3,346	2,992	3,139	3,191	2,870	3,585
Law	346	509	319	539	379	7,353	7,101	7,078	6,916	6,972	7,161	6,956	6,824	6,621	6,668
Nursing	236	233	307	322	401	978	1,023	925	842	1,270	708	865	849	869	1,070
Social Work	681	745	764	506	785	2,487	2,565	2,613	2,765	2,923	2,410	2,414	2,518	2,464	2,862
Veterinary Medicine	706	720	792	708	810	4,040	4,393	4,594	4,916	5,329	3,990	4,323	4,632	4,869	4,882
University	0	6	6	9	15	6	24	12	36	36	15	12	3	30	3

SOURCE: Class Tape (14th day)

NOTE: Health Science Center data were not available

TOP 10 FEEDER COUNTRIES, STATES, AND TENNESSEE COUNTIES FALL 2002

TOP 10 FEEDER COUNTRIES

COUNTRY	TOTAL	UNDERGRAD	GRAD
INTERNATIONAL	1,166	310	856
China	292	12	280
India	184	10	174
Republic of Korea	103	29	74
Japan	38	23	15
Taiwan	37	9	28
Canada	37	17	20
Turkey	27	4	23
United Kingdom	23	16	7
Germany	23	15	8
Russia	19	6	13

TOP 10 FEEDER STATES

STATE	TOTAL	UNDERGRAD	GRAD
OUT-OF-STATE	4,896	3,234	1,662
Virginia	627	482	145
Georgia	614	488	126
Ohio	395	336	59
North Carolina	383	257	126
South Carolina	221	154	67
Florida	212	144	68
Alabama	200	107	93
Arkansas	179	38	141
Kentucky	177	112	65
Mississippi	164	41	123

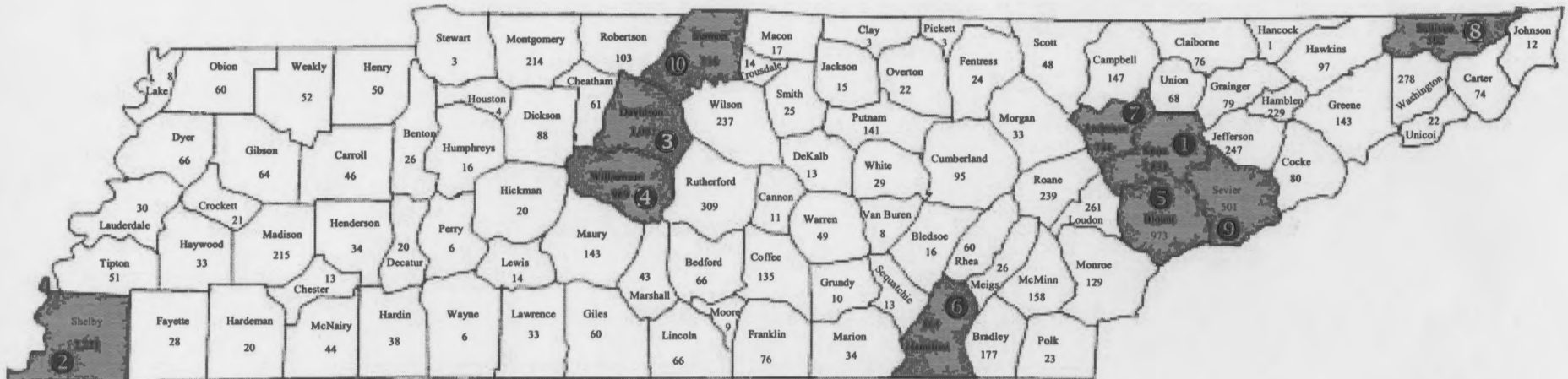
TOP 10 FEEDER TENNESSEE COUNTIES

COUNTY	TOTAL	UNDERGRAD	GRAD
TENNESSEE	21,909	16,412	5,497
Knox	7,833	5,754	2,079
Shelby	2,221	1,512	709
Davidson	1,081	798	283
Williamson	989	885	104
Blount	973	708	265
Hamilton	864	662	202
Anderson	744	561	183
Sullivan	502	416	86
Sevier	501	410	91
Sumner	316	264	52

SOURCE: Student Information System

NOTE: Includes Knoxville, Institute of Agriculture, Veterinary Medicine, Space Institute, and Health Science Center

ENROLLMENT BY COUNTY FALL 2002



1- Knox	7,833
2- Shelby	2,221
3- Davidson	1,081
4- Williamson	989
5- Blount	973
6- Hamilton	864
7- Anderson	744
8- Sullivan	502
9- Sevier	501
10- Sumner	316

SOURCE: Student Information System

NOTE: Includes Knoxville, Institute of Agriculture, Veterinary Medicine, Space Institute, and Health Science Center

ENROLLMENT BY COUNTRY FALL 2002



SOURCE: Student Information System

NOTE: Includes Knoxville, Institute of Agriculture, Veterinary Medicine, Space Institute, and Health Science Center

ENROLLMENT BY RACE AND GENDER FALL 1988-2002

YEAR	TOTAL			WHITE			BLACK			HISPANIC			ASIAN			AMERICAN INDIAN			NOT REPORTED		
	Total	Men	Women	Total	Men	Women	Total	Men	Women	Total	Men	Women	Total	Men	Women	Total	Men	Women	Total	Men	Women
1988	24,390	12,668	11,722	22,359	11,606	10,753	1,167	501	666	139	89	50	681	453	228	44	19	25	0	0	0
1989	25,016	12,875	12,141	22,855	11,737	11,118	1,237	556	681	168	94	74	715	467	248	41	21	20	0	0	0
1990	25,414	13,086	12,328	23,084	11,875	11,209	1,317	584	733	182	102	80	787	507	280	44	18	26	0	0	0
1991	25,598	13,061	12,537	23,093	11,751	11,342	1,349	599	750	186	99	87	920	589	331	50	23	27	0	0	0
1992	25,998	13,377	12,621	23,314	11,963	11,351	1,414	631	783	226	116	110	986	632	354	58	35	23	0	0	0
1993	25,890	13,157	12,733	23,177	11,763	11,414	1,361	598	763	243	118	125	1,030	638	392	79	40	39	0	0	0
1994	25,412	12,935	12,477	22,768	11,562	11,206	1,320	593	727	256	131	125	995	612	383	73	37	36	0	0	0
1995	25,251	12,534	12,717	22,651	11,209	11,442	1,260	554	706	259	137	122	995	594	401	86	40	46	0	0	0
1996	25,086	12,349	12,737	22,541	11,093	11,448	1,216	506	710	264	141	123	982	568	414	83	41	42	0	0	0
1997	25,039	12,289	12,750	22,377	10,975	11,402	1,288	547	741	285	156	129	1,006	564	442	83	47	36	0	0	0
1998	25,611	12,393	13,218	22,804	11,040	11,764	1,414	591	823	295	155	140	1,024	570	454	74	37	37	0	0	0
1999	25,981	12,493	13,488	23,013	11,112	11,901	1,518	602	916	320	164	156	1,046	579	467	84	36	48	0	0	0
2000	25,474	12,074	13,400	22,364	10,619	11,745	1,540	643	897	312	155	157	1,083	577	506	77	32	45	98	48	50
2001	26,033	12,243	13,790	22,635	10,672	11,963	1,669	668	1,001	344	165	179	1,137	630	507	85	30	55	163	78	85
2002*	27,971	13,285	14,686	23,690	11,353	12,337	2,016	764	1,252	368	182	186	1,460	794	666	101	42	59	336	150	186

SOURCE: Student Information System

*Beginning in 2002 data include Knoxville, Institute of Agriculture, Veterinary Medicine, Space Institute, and Health Science Center

TOTAL ENROLLMENT BY LEVEL, FULL-TIME AND PART-TIME FALL 1998-2002

	TOTAL					FULL-TIME					PART-TIME				
	1998	1999	2000	2001	2002*	1998	1999	2000	2001	2002*	1998	1999	2000	2001	2002*
TOTAL	25,612	25,981	25,474	26,033	27,971	20,719	21,645	21,427	21,940	23,829	4,893	4,336	4,047	4,093	4,142
First-time Freshmen	3,806	4,155	3,833	3,958	3,682	3,747	4,099	3,794	3,898	3,638	59	56	39	60	44
Other Freshmen	1,942	1,908	1,834	1,721	1,683	1,762	1,744	1,683	1,591	1,602	180	164	151	130	81
Sophomore	3,858	4,111	4,239	4,253	4,078	3,533	3,826	3,981	4,024	3,862	325	285	258	229	216
Undergraduate Special	708	429	378	327	376	103	95	90	84	119	605	334	288	243	257
Junior	3,954	3,959	4,054	4,139	4,084	3,513	3,545	3,636	3,795	3,763	441	414	418	344	321
Senior	5,074	5,359	5,324	5,429	5,737	4,130	4,412	4,396	4,511	4,809	944	947	928	918	928
5th Year Undergraduate	351	338	347	297	316	268	270	281	232	261	83	68	66	65	55
UNDERGRADUATE TOTAL	19,693	20,259	20,009	20,124	19,956	17,056	17,991	17,861	18,135	18,054	2,637	2,268	2,148	1,989	1,902
Graduate Special	383	363	328	414	409	66	64	76	98	72	317	299	252	316	337
Master Candidate	3,496	3,363	3,281	3,308	3,753	2,296	2,298	2,279	2,197	2,561	1,200	1,065	1,002	1,111	1,192
Education Special	59	62	46	42	56	15	14	6	6	4	44	48	40	36	52
Doctoral - Early	1,270	1,259	1,129	1,201	1,390	752	752	688	719	922	518	507	441	482	468
Doctoral - Late	226	200	225	213	311	55	54	62	59	132	171	146	163	154	179
Post Doctoral	2	2	0	4	3	0	0	0	1	1	2	2	0	3	2
GRADUATE TOTAL	5,436	5,249	5,009	5,182	5,922	3,184	3,182	3,111	3,080	3,692	2,252	2,067	1,898	2,102	2,230
Professional 1st	287	273	272	344	748	286	272	272	344	746	1	1	0	0	2
Professional 2nd	46	56	68	136	430	46	56	68	136	428	0	0	0	0	2
Professional 3rd	150	144	116	229	554	147	144	115	227	550	3	0	1	2	4
Professional 4th	0	0	0	18	361	0	0	0	18	359	0	0	0	0	2
PROFESSIONAL TOTAL	483	473	456	727	2,093	479	472	455	725	2,083	4	1	1	2	10

SOURCE: Student Information System

*Beginning in 2002 data include Knoxville, Institute of Agriculture, Veterinary Medicine, Space Institute, and Health Science Center

**FIRST-TIME FRESHMEN ENROLLMENT
BY COLLEGE, RACE, AND GENDER
FALL 2002**

	TOTAL			WHITE			BLACK			HISPANIC			ASIAN			AMERICAN INDIAN			NOT REPORTED		
	Total	Men	Women	Total	Men	Women	Total	Men	Women	Total	Men	Women	Total	Men	Women	Total	Men	Women	Total	Men	Women
TOTAL	3,682	1,787	1,895	3,151	1,544	1,607	322	139	183	55	29	26	109	52	57	11	8	3	34	15	19
COLLEGE																					
Agricultural Sciences & Natural Resources	113	47	66	102	44	58	6	0	6	1	0	1	1	1	0	1	1	0	2	1	1
Architecture & Design	95	48	47	89	45	44	2	2	0	2	0	2	1	1	0	1	0	1	0	0	0
Arts & Sciences	1,189	524	665	983	451	532	121	32	89	23	14	9	46	19	27	5	3	2	11	5	6
Business Administration	563	330	233	484	284	200	47	29	18	6	2	4	18	8	10	2	2	0	6	5	1
Communication & Information	225	69	156	193	59	134	23	7	16	3	1	2	3	1	2	0	0	0	3	1	2
Education, Health & Human Sciences	226	54	172	204	50	154	14	4	10	3	0	3	2	0	2	0	0	0	3	0	3
Engineering	427	343	84	350	283	67	51	38	13	6	6	0	19	15	4	0	0	0	1	1	0
Nursing	122	2	120	102	2	100	13	0	13	0	0	0	4	0	4	0	0	0	3	0	3
Social Work	9	1	8	9	1	8	0	0	0	0	0	0	0	0	0	0	0	0	0	0	0
University	713	369	344	635	325	310	45	27	18	11	6	5	15	7	8	2	2	0	5	2	3

SOURCE: Student Information System

NOTE: The Health Science Center does not enroll first-time freshmen

APPLIED, ADMITTED, AND ENROLLED FRESHMEN FALL 1983-2002

Year	Number Applied	Number Admitted	Percentage of Applicants Admitted	Number Enrolled	Percentage of Applicants Enrolled	Percentage of Admitted Enrolled
1983	6,117	4,670	76%	3,323	54%	71%
1984	6,153	4,679	76%	3,353	54%	72%
1985	6,139	4,891	80%	3,494	57%	71%
1986	6,699	5,334	80%	3,699	55%	69%
1987	6,892	5,530	80%	3,834	56%	69%
1988	7,822	6,021	77%	3,795	49%	63%
1989	7,222	5,739	79%	3,390	47%	59%
1990	7,526	5,816	77%	3,418	45%	59%
1991	6,994	5,070	72%	3,060	44%	60%
1992	7,583	5,573	73%	3,219	42%	58%
1993	7,473	5,372	72%	3,013	40%	56%
1994	7,027	5,179	74%	2,912	41%	56%
1995	8,305	5,977	72%	3,506	42%	59%
1996	8,630	6,438	75%	3,692	43%	57%
1997	8,923	6,740	76%	3,890	44%	58%
1998	9,464	7,177	76%	3,806	40%	53%
1999	10,634	7,148	67%	4,155	39%	58%
2000	10,171	6,344	62%	3,833	38%	60%
2001	8,263	5,675	69%	3,958	48%	70%
2002	9,724	5,629	58%	3,682	38%	65%

SOURCE: Office of Enrollment Services

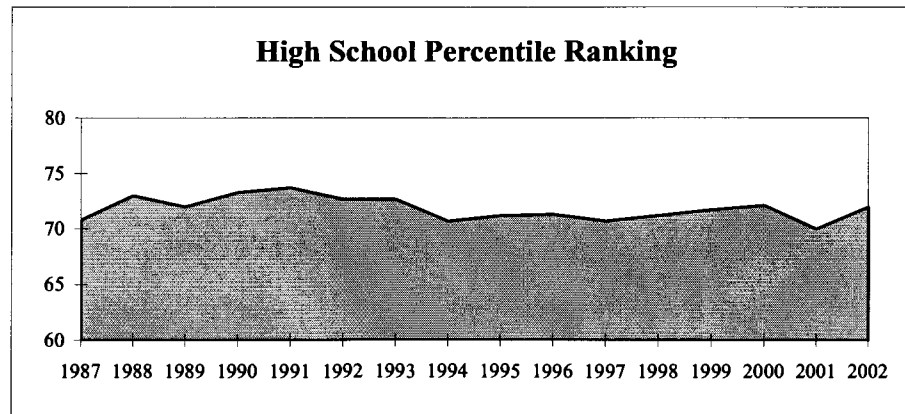
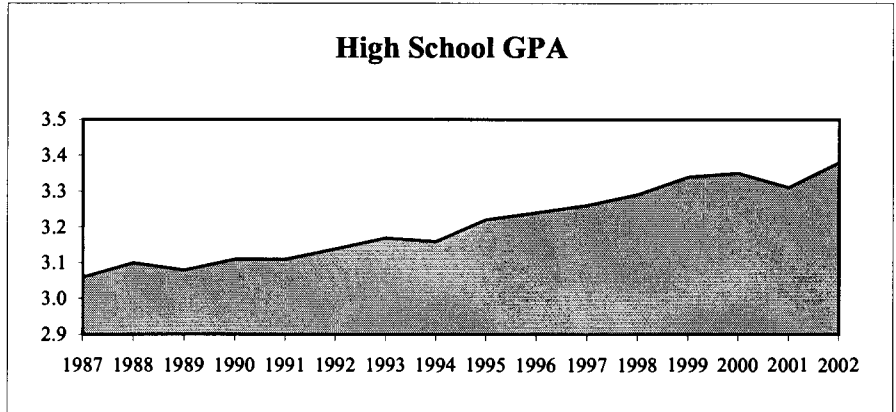
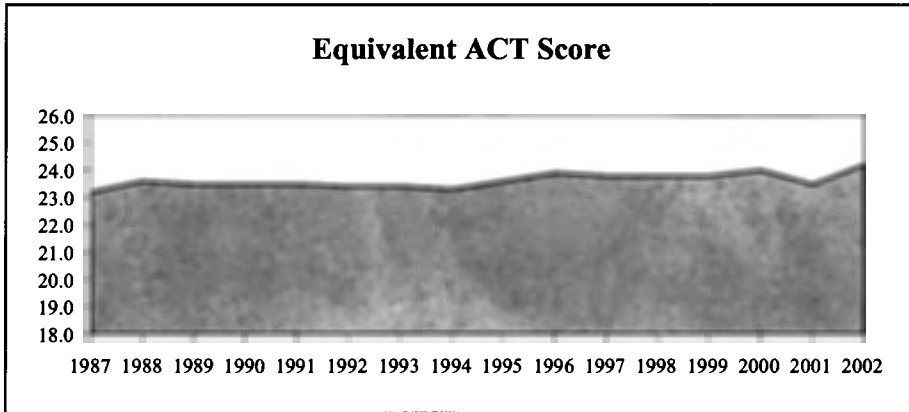
AVERAGE TEST SCORE, HIGH SCHOOL GPA, AND CLASS RANKING FOR FIRST-TIME FRESHMEN FALL 1989-2002

	1989	1990	1991	1992	1993	1994	1995	1996	1997	1998	1999	2000	2001	2002
Equivalent ACT														
Number	3,294	3,317	2,989	3,160	2,960	2,867	3,458	3,649	3,851	3,781	4,132	3,818	3,932	3,662
Average	23.5	23.5	23.5	23.4	23.4	23.3	23.6	23.9	23.8	23.8	23.8	24.0	23.5	24.2
ACT Composite														
Number	2,937	2,958	2,611	2,742	2,618	2,539	3,067	3,240	3,356	3,294	3,581	3,303	3,411	3,138
Average	23.4	23.3	23.3	23.2	23.1	23.1	23.4	23.6	23.6	23.6	23.6	23.9	23.4	24.0
SAT Total														
Number	1,317	1,394	1,370	1,439	1,287	1,181	1,478	1,665	1,771	1,734	1,829	1,741	1,714	1,699
Average	1,082	1,091	1,093	1,089	1,095	1,097	1,106	1,113	1,101	1,104	1,103	1,113	1,092	1,110
High School GPA														
Number	3,346	3,362	3,026	3,172	2,982	2,896	3,473	3,657	3,869	3,777	4,131	3,818	3,932	3,666
Average	3.08	3.11	3.11	3.14	3.17	3.16	3.22	3.24	3.26	3.29	3.34	3.35	3.31	3.38
3.50 - 4.00	818	887	783	890	911	890	1,142	1,212	1,398	1,459	1,748	1,612	1,677	1,714
3.00 - 3.49	1,059	1,080	1,001	1,001	955	929	1,143	1,050	1,284	1,255	1,377	1,335	1,214	1,113
2.50 - 2.99	1,008	948	844	919	788	739	876	716	921	853	814	699	751	633
2.00 - 2.49	449	437	388	346	314	329	299	250	255	208	189	168	266	182
< 2.00	12	10	10	16	14	9	13	0	11	2	3	4	24	24
High School Percentile Ranking														
Number	2,511	2,524	2,295	2,379	2,139	2,003	2,322	2,149	2,079	2,055	2,096	1,962	3,257	2,930
Average	72	73	74	73	73	71	71	71	71	72	72	72	70	72
76 - 99	1,305	1,380	1,257	1,267	1,151	970	1,154	1,106	1,045	1,054	1,088	1,035	1,647	1,579
51 - 75	768	749	701	707	627	639	745	653	637	613	657	594	983	845
26 - 50	355	334	294	331	305	332	364	320	338	327	291	276	480	409
1 - 25	83	61	43	74	56	62	59	70	59	61	60	57	147	97

SOURCE: Student Information System and Student Record Master

NOTE: Equivalent ACT scores are a combination of the higher of the ACT composite or SAT total scores presented on an ACT scale

AVERAGE EQUIVALENT ACT SCORES, HIGH SCHOOL GPA, AND CLASS RANKING FOR FIRST-TIME FRESHMEN, FALL 1987-2002



SOURCES: Student Information System and Student Record Master

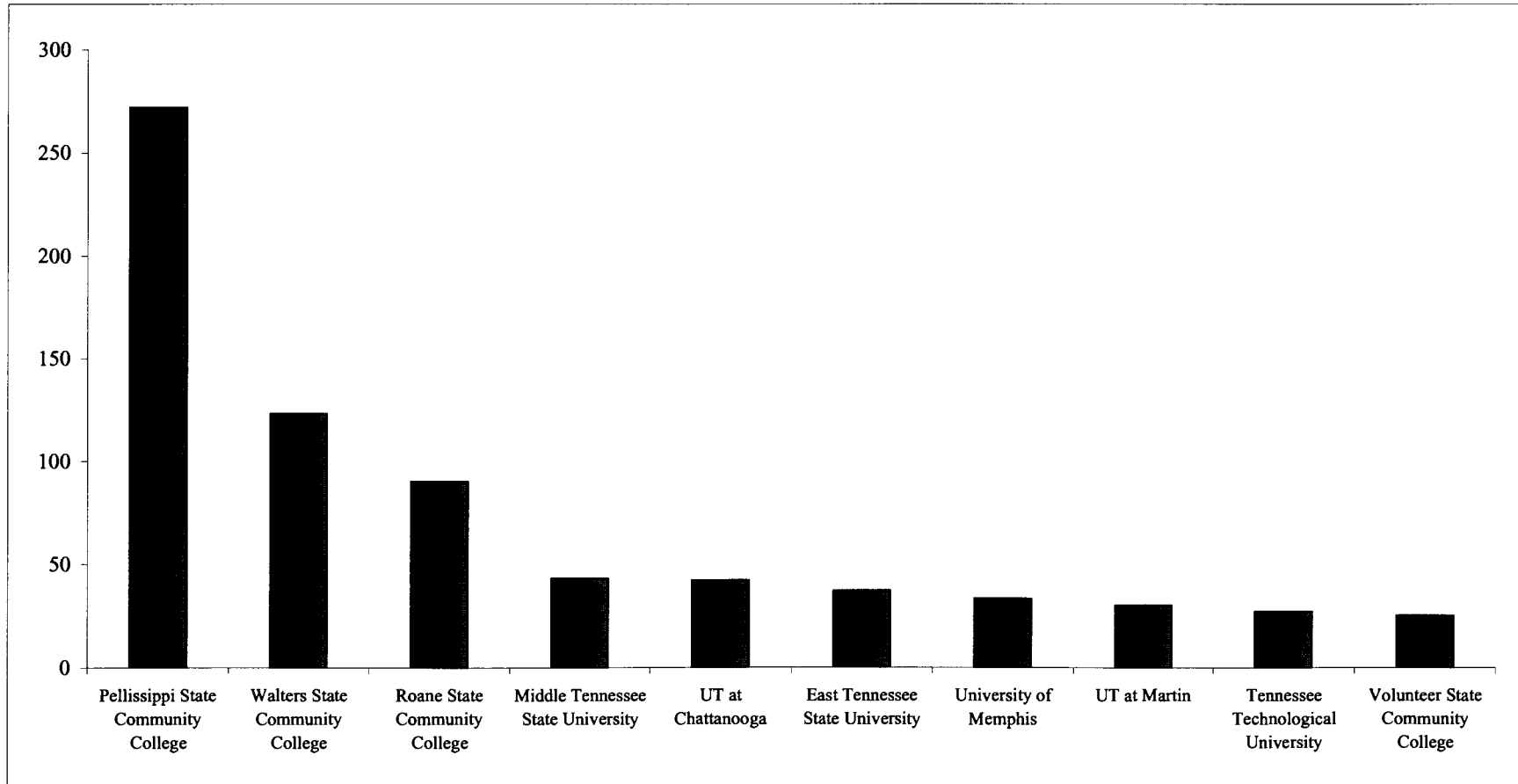
**UNDERGRADUATE TRANSFER ENROLLMENT
BY COLLEGE, RACE, AND GENDER
FALL 2002**

	TOTAL			WHITE			BLACK			HISPANIC			ASIAN			AMERICAN INDIAN			NOT REPORTED		
	Total	Men	Women	Total	Men	Women	Total	Men	Women	Total	Men	Women	Total	Men	Women	Total	Men	Women	Total	Men	Women
TOTAL	1,372	657	715	1,210	588	622	78	31	47	18	9	9	41	15	26	7	5	2	18	9	9
COLLEGE																					
Agricultural Sciences & Natural Resources	69	41	28	64	38	26	2	1	1	1	1	0	0	0	0	1	1	0	1	0	1
Architecture & Design	13	7	6	12	6	6	0	0	0	0	0	0	1	1	0	0	0	0	0	0	0
Arts & Sciences	454	208	246	408	187	221	14	7	7	12	6	6	15	5	10	0	0	0	5	3	2
Business Administration	133	82	51	114	74	40	5	3	2	2	1	1	9	1	8	0	0	0	3	3	0
Communication & Information	82	31	51	73	29	44	5	1	4	0	0	0	2	1	1	1	0	1	1	0	1
Education, Health & Human Sciences	132	39	93	117	32	85	10	4	6	0	0	0	2	1	1	1	1	0	2	1	1
Engineering	107	88	19	98	81	17	2	2	0	2	1	1	4	4	0	0	0	0	1	0	1
Health Science Center	82	8	74	56	5	51	20	2	18	0	0	0	3	0	3	1	0	1	2	1	1
Nursing	58	10	48	55	9	46	1	1	0	0	0	0	0	0	0	0	0	0	2	0	2
Social Work	13	1	12	9	1	8	2	0	2	1	0	1	1	0	1	0	0	0	0	0	0
University	229	142	87	204	126	78	17	10	7	0	0	0	4	2	2	3	3	0	1	1	0

SOURCE: Student Information System

)

UNDERGRADUATE TRANSFER ENROLLMENT TOP TEN FEEDER INSTITUTIONS FALL 2002



SOURCE: Student Information System

NOTE: Includes Knoxville, Institute of Agriculture, Veterinary Medicine, Space Institute, and Health Science Center

APPLIED, ADMITTED, AND ENROLLED UNDERGRADUATE TRANSFER STUDENTS, FALL 1983-2002

Year	Number Applied	Number Admitted	Percentage of Applicants Admitted	Number Enrolled	Percentage of Applicants Enrolled	Percentage of Admitted Enrolled
1983	2,339	1,646	70%	1,166	50%	71%
1984	2,287	1,699	74%	1,374	60%	81%
1985	2,003	1,489	74%	1,045	52%	70%
1986	2,119	1,603	76%	1,097	52%	68%
1987	1,882	1,350	72%	934	50%	69%
1988	2,080	1,461	70%	938	45%	64%
1989	2,235	1,615	72%	1,097	49%	68%
1990	2,576	1,837	71%	1,226	48%	67%
1991	2,662	1,868	70%	1,249	47%	67%
1992	2,725	1,938	71%	1,481	54%	76%
1993	2,898	2,084	72%	1,586	55%	76%
1994	2,956	2,141	72%	1,624	55%	76%
1995	2,830	1,987	70%	1,352	48%	68%
1996	2,784	1,991	72%	1,434	52%	72%
1997	2,554	1,829	72%	1,173	46%	64%
1998	2,489	1,730	70%	1,214	49%	70%
1999	2,647	1,826	69%	1,427	54%	78%
2000	2,479	1,754	71%	1,246	50%	71%
2001	2,208	1,727	78%	1,411	64%	82%
2002*	2,449	1,688	69%	1,372	56%	81%

SOURCE: Office of Enrollment Services

*Beginning in 2002 data include Knoxville and Health Science Center

)

UNDERGRADUATE ENROLLMENT BY RACE AND GENDER FALL 1988-2002

YEAR	TOTAL			WHITE			BLACK			HISPANIC			ASIAN			AMERICAN INDIAN			NOT REPORTED		
	Total	Men	Women	Total	Men	Women	Total	Men	Women	Total	Men	Women	Total	Men	Women	Total	Men	Women	Total	Men	Women
1988	18,770	9,811	8,959	17,479	9,170	8,309	863	390	473	74	47	27	329	193	136	25	11	14	0	0	0
1989	19,067	9,891	9,176	17,708	9,208	8,500	900	422	478	94	51	43	339	196	143	26	14	12	0	0	0
1990	19,532	10,052	9,480	18,030	9,312	8,718	997	455	542	106	58	48	371	216	155	28	11	17	0	0	0
1991	19,385	9,951	9,434	17,764	9,143	8,621	1,033	469	564	103	55	48	452	268	184	33	16	17	0	0	0
1992	19,342	10,095	9,247	17,604	9,200	8,404	1,043	485	558	144	79	65	510	306	204	41	25	16	0	0	0
1993	18,986	9,770	9,216	17,244	8,894	8,350	990	453	537	157	83	74	543	312	231	52	28	24	0	0	0
1994	18,608	9,611	8,997	16,915	8,743	8,172	946	442	504	177	95	82	524	307	217	46	24	22	0	0	0
1995	18,735	9,470	9,265	17,068	8,617	8,451	864	404	460	179	98	81	571	324	247	53	27	26	0	0	0
1996	18,826	9,474	9,352	17,141	8,642	8,499	864	395	469	199	107	92	570	304	266	52	26	26	0	0	0
1997	19,061	9,520	9,541	17,187	8,589	8,598	972	447	525	210	116	94	637	335	302	55	33	22	0	0	0
1998	19,692	9,716	9,976	17,707	8,763	8,944	1,087	482	605	219	117	102	627	325	302	52	29	23	0	0	0
1999	20,259	9,912	10,347	18,161	8,940	9,221	1,196	501	695	234	125	109	604	315	289	64	31	33	0	0	0
2000	20,009	9,718	10,291	17,822	8,686	9,136	1,222	541	681	237	127	110	585	293	292	60	28	32	83	43	40
2001	20,124	9,736	10,388	17,775	8,649	9,126	1,310	559	751	249	123	126	592	313	279	64	26	38	134	66	68
2002*	19,956	9,710	10,246	17,383	8,560	8,823	1,399	584	815	263	131	132	630	307	323	76	32	44	205	96	109

SOURCE: Student Information System

*Beginning in 2002 data include Knoxville, Institute of Agriculture, Veterinary Medicine, Space Institute, and Health Science Center

)

**FIRST-TIME GRADUATE AND PROFESSIONAL HEADCOUNT
BY COLLEGE, RACE, AND GENDER
FALL 2002**

	TOTAL			WHITE			BLACK			HISPANIC			ASIAN			AMERICAN INDIAN			NOT REPORTED		
	Total	Men	Women	Total	Men	Women	Total	Men	Women	Total	Men	Women	Total	Men	Women	Total	Men	Women	Total	Men	Women
TOTAL	2,237	898	1,339	1,789	698	1,091	140	36	104	27	11	16	206	126	80	8	1	7	67	26	41
COLLEGE																					
Agricultural Sciences & Natural Resources	71	35	36	53	27	26	1	0	1	3	2	1	12	6	6	0	0	0	2	0	2
Architecture & Design	6	3	3	5	2	3	0	0	0	0	0	0	0	0	0	0	0	0	1	1	0
Arts & Sciences	414	207	207	318	158	160	21	8	13	3	2	1	39	25	14	1	0	1	32	14	18
Business Administration	208	134	74	174	115	59	4	1	3	5	3	2	18	12	6	1	0	1	6	3	3
Communication & Information	111	23	88	100	22	78	3	1	2	0	0	0	5	0	5	0	0	0	3	0	3
Education, Health & Human Sciences	435	96	339	384	85	299	18	4	14	6	1	5	14	3	11	1	1	0	12	2	10
Engineering	195	151	44	122	98	24	13	7	6	0	0	0	58	45	13	1	0	1	1	1	0
Health Science Center	163	56	107	90	21	69	19	2	17	3	0	3	48	31	17	1	0	1	2	2	0
Intercollegiate Programs	9	5	4	7	4	3	0	0	0	0	0	0	2	1	1	0	0	0	0	0	0
Law	196	104	92	172	93	79	18	7	11	1	1	0	4	2	2	0	0	0	1	1	0
Nursing	32	6	26	29	6	23	1	0	1	0	0	0	2	0	2	0	0	0	0	0	0
Social Work	181	20	161	131	13	118	38	5	33	3	0	3	1	0	1	1	0	1	7	2	5
Veterinary Medicine	94	19	75	94	19	75	0	0	0	0	0	0	0	0	0	0	0	0	0	0	0
University	122	39	83	110	35	75	4	1	3	3	2	1	3	1	2	2	0	2	0	0	0

SOURCE: Student Information System

NOTE: Includes Knoxville, Institute of Agriculture, Veterinary Medicine, Space Institute, and Health Science Center

)

GRADUATE ENROLLMENT BY RACE AND GENDER FALL 1988-2002

YEAR	TOTAL			WHITE			BLACK			HISPANIC			ASIAN			AMERICAN INDIAN			NOT REPORTED		
	Total	Men	Women	Total	Men	Women	Total	Men	Women	Total	Men	Women	Total	Men	Women	Total	Men	Women	Total	Men	Women
1988	5,620	2,857	2,763	4,880	2,436	2,444	304	111	193	65	42	23	352	260	92	19	8	11	0	0	0
1989	5,949	2,984	2,965	5,147	2,529	2,618	337	134	203	74	43	31	376	271	105	15	7	8	0	0	0
1990	5,882	3,034	2,848	5,054	2,563	2,491	320	129	191	76	44	32	416	291	125	16	7	9	0	0	0
1991	6,213	3,110	3,103	5,329	2,608	2,721	316	130	186	83	44	39	468	321	147	17	7	10	0	0	0
1992	6,656	3,282	3,374	5,710	2,763	2,947	371	146	225	82	37	45	476	326	150	17	10	7	0	0	0
1993	6,904	3,387	3,517	5,933	2,869	3,064	371	145	226	86	35	51	487	326	161	27	12	15	0	0	0
1994	6,804	3,324	3,480	5,853	2,819	3,034	374	151	223	79	36	43	471	305	166	27	13	14	0	0	0
1995	6,516	3,064	3,452	5,583	2,592	2,991	396	150	246	80	39	41	424	270	154	33	13	20	0	0	0
1996	6,260	2,875	3,385	5,400	2,451	2,949	352	111	241	65	34	31	412	264	148	31	15	16	0	0	0
1997	5,978	2,769	3,209	5,190	2,386	2,804	316	100	216	75	40	35	369	229	140	28	14	14	0	0	0
1998	5,919	2,677	3,242	5,097	2,277	2,820	327	109	218	76	38	38	397	245	152	22	8	14	0	0	0
1999	5,722	2,581	3,141	4,852	2,172	2,680	322	101	221	86	39	47	442	264	178	20	5	15	0	0	0
2000	5,465	2,356	3,109	4,542	1,933	2,609	318	102	216	75	28	47	498	284	214	17	4	13	15	5	10
2001	5,909	2,507	3,402	4,860	2,023	2,837	359	109	250	95	42	53	545	317	228	21	4	17	29	12	17
2002*	8,015	3,575	4,440	6,307	2,793	3,514	617	180	437	105	51	54	830	487	343	25	10	15	131	54	77

SOURCE: Student Information System

*Beginning in 2002 data include Knoxville, Institute of Agriculture, Veterinary Medicine, Space Institute, and Health Science Center

)

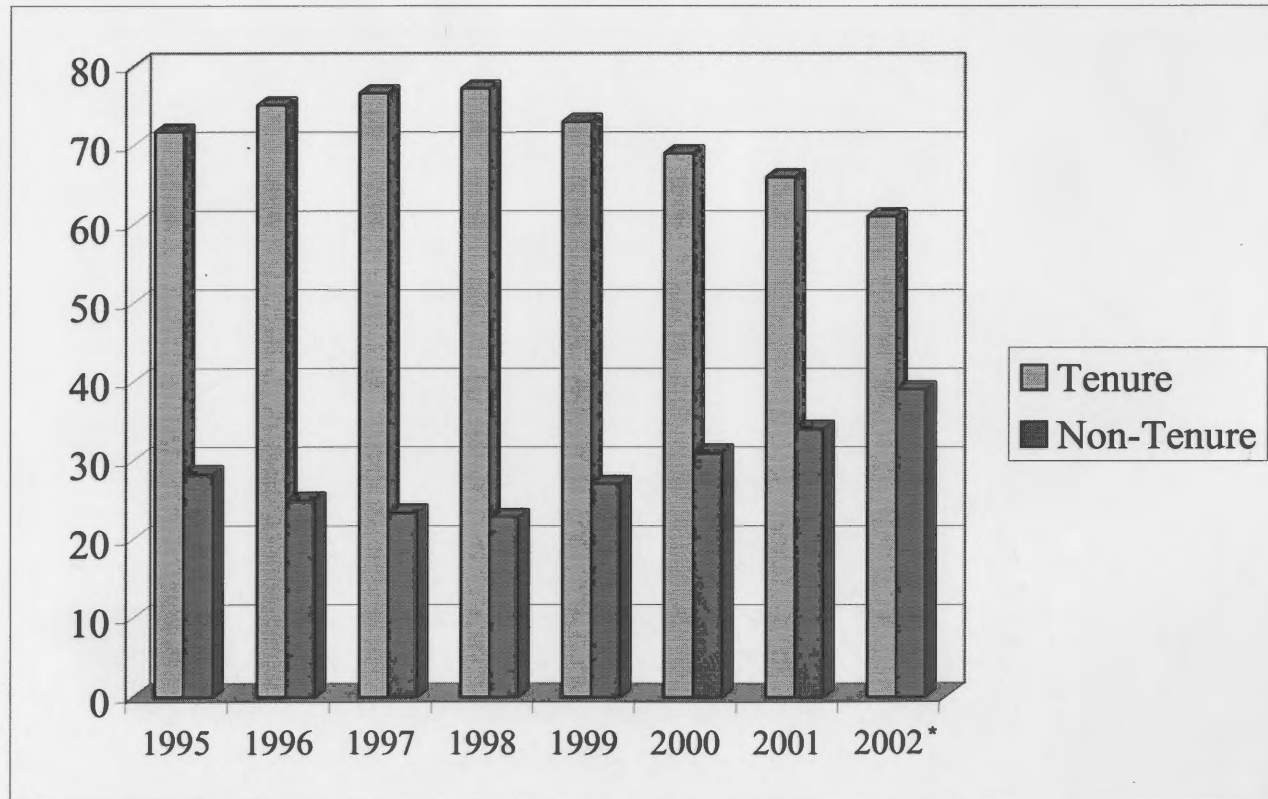
**FULL-TIME INSTRUCTIONAL FACULTY
BY APPOINTMENT TYPE, RANK, TENURE STATUS, AND COLLEGE
FALL 2002**

	Number of Faculty	Appointment		Academic Rank					Tenure Status		
		9-Month	12-Month	Professor	Associate Professor	Assistant Professor	Instructor	Lecturer	Tenured	On-Track	Non-Tenured
UNIVERSITY TOTAL	1,398	1,082	316	573	379	289	39	118	847	358	193
UNIVERSITY PERCENTAGES	100.0	77.4	22.6	41.0	27.1	20.7	2.8	8.4	60.6	25.6	13.8
Agricultural Sciences & Natural Resources	92	2	90	45	27	18	2	0	66	24	2
Architecture & Design	30	27	3	9	10	7	0	4	16	10	4
Arts & Sciences - Humanities	244	242	2	78	55	45	4	62	127	49	68
Arts & Sciences - Natural Sciences	200	187	13	106	33	34	2	25	130	42	28
Arts & Sciences - Social Sciences	132	128	4	56	36	31	4	5	90	34	8
Business Administration	107	107	0	41	30	19	4	13	65	21	21
Communication & Information	50	48	2	15	18	10	3	4	31	13	6
Education, Health & Human Sciences	138	120	18	63	36	26	9	4	78	43	17
Engineering	140	140	0	76	40	23	1	0	101	36	3
Health Science Center	109	0	109	36	40	31	2	0	63	38	8
Law	30	29	1	16	14	0	0	0	21	8	1
Nursing	27	27	0	3	6	12	6	0	7	10	10
Social Work	25	24	1	6	7	11	0	1	10	14	1
Veterinary Medicine	74	1	73	23	27	22	2	0	42	16	16

SOURCE: EE06 Work Tape

NOTE: Includes Knoxville, Institute of Agriculture, Veterinary Medicine, Space Institute, and Health Science Center

TENURED AND NON-TENURED FULL-TIME INSTRUCTIONAL FACULTY FALL 1995-2002 (AS PERCENTAGES)



Source: EE06 Work Tape

*Beginning in 2002 data include Knoxville, Institute of Agriculture, Veterinary Medicine, Space Institute, and Health Science Center

)

**FULL-TIME INSTRUCTIONAL FACULTY
BY GENDER, HIGHEST DEGREE HELD, AND RACE
FALL 2002**

	Number of Faculty	GENDER		HIGHEST DEGREE HELD					RACE				
		Male	Female	PhD	Prof.	MA	BA	HS	White	Black	American Indian	Hispanic	Asian
UNIVERSITY TOTAL	1,398	941	457	1,057	127	195	18	1	1,217	52	3	27	99
UNIVERSITY PERCENTAGES	100.0	67.3	32.7	75.6	9.1	13.9	1.3	0.1	87.1	3.7	0.2	1.9	7.1
Agricultural Sciences & Natural Resources	92	81	11	87	1	4	0	0	85	2	0	0	5
Architecture & Design	30	23	7	7	0	18	5	0	30	0	0	0	0
Arts & Sciences - Humanities	244	131	113	144	1	91	7	1	215	8	0	15	6
Arts & Sciences - Natural Sciences	200	166	34	181	0	19	0	0	170	1	0	5	24
Arts & Sciences - Social Sciences	132	85	47	128	0	3	1	0	115	8	0	2	7
Business Administration	107	84	23	95	2	9	1	0	93	1	2	2	9
Communication & Information	50	25	25	44	0	5	1	0	47	0	0	0	3
Education, Health & Human Sciences	138	62	76	128	0	10	0	0	120	10	0	0	8
Engineering	140	134	6	137	1	1	1	0	113	3	0	1	23
Health Science Center	109	65	44	42	48	17	2	0	90	11	0	0	8
Law	30	20	10	6	19	5	0	0	27	3	0	0	0
Nursing	27	1	26	18	0	9	0	0	23	1	0	1	2
Social Work	25	13	12	20	1	4	0	0	21	3	1	0	0
Veterinary Medicine	74	51	23	20	54	0	0	0	68	1	0	1	4

SOURCE: EE06 Work Tape

NOTES: Includes Knoxville, Institute of Agriculture, Veterinary Medicine, Space Institute, and Health Science Center

)

AGE AND LENGTH OF SERVICE OF FULL-TIME INSTRUCTIONAL FACULTY FALL 1996-2002 (AS PERCENTAGES)

Age Distribution	Fall 1996	Fall 1997	Fall 1998	Fall 1999	Fall 2000	Fall 2001	Fall 2002*
< 30	1.4	1.0	0.6	1.0	1.4	1.6	1.9
30-39	16.9	15.6	15.5	12.8	13.4	14.2	17.2
40-49	32.4	31.4	32.0	31.4	31.9	31.2	28.8
50-59	31.6	32.6	33.6	35.4	34.4	34.7	33.5
60-65	13.8	14.4	14.0	14.7	14.1	14.1	14.1
> 65	3.8	5.0	4.2	4.7	4.7	4.3	4.5

Length of Service	Fall 1996	Fall 1997	Fall 1998	Fall 1999	Fall 2000	Fall 2001	Fall 2002*
0 - 4	21.6	19.1	19.0	16.3	19.2	17.1	31.3
5 - 9	18.1	17.5	17.5	18.7	18.7	18.6	13.5
10 - 14	12.5	12.7	13.5	14.6	13.7	15.3	13.2
15 - 19	11.7	12.5	12.2	11.9	11.4	11.6	10.7
>19	36.0	38.3	37.8	38.4	37.0	37.4	31.2

SOURCE: EE06 Work Tape

*Beginning 2002 data include Knoxville, Institute of Agriculture, Veterinary Medicine, Space Institute, and Health Science Center

DISTRIBUTION OF EMPLOYEES BY EEO CATEGORY, FALL 2002

EEO CATEGORY	TOTAL NUMBER	MALE		FEMALE		WHITE		BLACK		TOTAL MINORITY	
		#	%	#	%	#	%	#	%	#	%
UNIVERSITY TOTALS	13,775	5,935	43.09	7,840	56.91	11,167	81.07	1,852	13.44	2,609	18.94
EXECUTIVE/ADMINISTRATIVE/MANAGERIAL	624	348	55.77	276	44.23	567	90.87	46	7.37	57	9.13
Executive	102	70	68.63	32	31.37	93	91.18	9	8.82	9	8.82
Administrative	522	278	53.26	244	46.74	474	90.80	37	7.09	48	9.20
FACULTY	3,230	2,138	66.19	1,092	33.81	2,819	87.28	116	3.59	411	12.72
Professor	966	814	84.27	152	15.73	897	92.86	15	1.55	69	7.14
Associate Professor	768	521	67.84	247	32.16	656	85.42	39	5.08	112	14.58
Assistant Professor	721	460	63.80	261	36.20	572	79.33	29	4.02	149	20.67
Instructor	200	98	49.00	102	51.00	171	85.50	11	5.50	29	14.50
Lecturer	296	126	42.57	170	57.43	268	90.54	5	1.69	28	9.46
Other Faculty	279	119	42.65	160	57.35	255	91.40	17	6.09	24	8.60
PROFESSIONAL	3,245	1,184	36.49	2,061	63.51	2,703	83.30	297	9.15	543	16.73
Professional	3,245	1,184	36.49	2,061	63.51	2,703	83.30	297	9.15	543	16.73
SECRETARIAL/CLERICAL	3,070	302	9.84	2,768	90.16	2,439	79.45	580	18.89	631	20.55
Supervisory	88	38	43.18	50	56.82	74	84.09	12	13.64	14	15.91
Non-Supervisory	2,982	264	8.85	2,718	91.15	2,365	79.31	568	19.05	617	20.69
TECHNICAL/PARAPROFESSIONAL	1,463	540	36.91	923	63.09	1,145	78.26	220	15.04	318	21.74
Supervisory	28	16	57.14	12	42.86	25	89.29	2	7.14	3	10.71
Non-Supervisory	1,435	524	36.52	911	63.48	1,120	78.05	218	15.19	315	21.95
SKILLED CRAFTS	521	495	95.01	26	4.99	455	87.33	57	10.94	66	12.67
Supervisory	69	69	100.00	0	0.00	61	88.41	8	11.59	8	11.59
Non-Supervisory	452	426	94.25	26	5.75	394	87.17	49	10.84	58	12.83
SERVICE MAINTENANCE	1,622	928	57.21	694	42.79	1,039	64.06	536	33.05	583	35.94
Supervisory	128	76	59.38	52	40.63	83	64.84	45	35.16	45	35.16
Non-Supervisory	1,494	852	57.03	642	42.97	956	63.99	491	32.86	538	36.01

SOURCE: IRIS

NOTE: Includes Knoxville, Institute of Agriculture, Veterinary Medicine, Space Institute, Health Science Center, and clinical programs

CHAIRS OF EXCELLENCE FILLED AS OF OCTOBER 2002

CHAIR NAME	CHAIRHOLDER	CHAIR NAME	CHAIRHOLDER
Knoxville		Health Science Center	
Ivan Racheff Chair of Ornamental Horticulture	Dr. Neal Stewart	Harriet S. Van Vleet Chair in Microbiology and Immunology	Dr. Terrence G. Cooper
Ivan Racheff Chair of Materials Science & Engineering	Dr. Peter K. Liaw	Harriet S. Van Vleet Chair in Pharmacology	Dr. Burt M. Sharp
Hodges Chair of English	Dr. Richard J. Finnerran	Harriet S. Van Vleet Chair in Biochemistry	Dr. John N. Fain
Condra Chair of Computer Integrated Engineering & Manufacturing	vacant	Harriet S. Van Vleet Chair in Virology	Dr. Martha M. Howe
Condra Chair of Power Electronics Applications	Dr. Bimal K. Bose	E. Eric Muirhead Chair in Pathology	Dr. Lawrence Pfeffer
Goodrich Chair in Waste Management and Environmental Engineering	Dr. Thomas Urbanik, III	Crippled Children's Hospital Foundation Chair in Biomedical Engineering	Dr. Frank A. DiBianca
J. Fred Holly Chair in Political Economy	Dr. Michael McKee	UT Medical Group Chair in Obstetrics and Gynecology	Dr. Frank W. Ling
Bernadotte E. Schmitt Chair of History	Dr. Robert J. Norrell	LeBonheur Chair in Pediatrics	Dr. Russell W. Chesney
Chair of Science, Technology & Medical Writing	Dr. Mark Littmann	LeBonheur Chair in Pediatrics (Second Chair)	vacant
Forrest & Patsy Shumway Chair in Romance Language	Dr. Patrick Brady	Plough Foundation Chair in Pediatrics	Dr. Bruce S. Alpert
Pilot Chair in Management	Dr. Lawrence R. James	J.R. Hyde Chair in Rehabilitation Engineering	vacant
Clayton Homes Chair in Finance	Dr. James Wansley	Thomas A. Gerwin Chair in Physiology	Dr. Leonard R. Johnson
College of Business Administration Chair of Policy Studies	Dr. John T. Mentzer	First Tennessee Chair in Clinical Pharmacy & Pediatrics	Dr. William E. Evans
Bernard Blasingame Chair in Agricultural Policy	Dr. Darryl E. Ray	William & Dorothy Dunavant Chair in Pediatrics	Dr. Robert Williams
Willis Lincoln Chair in Physics	Dr. John Quinn	Federal Express Chair in Pediatrics	Dr. Mary Ellen Conley
Nancy Gore Hunger Chair in Environmental Studies	Dr. Daniel Simberloff	Semmes-Murphey Chair in Neurology	Dr. William A. Pulsinelli
Space Institute		Maury W. Bronstein Chair in Cardiovascular Physiology	Dr. Aviv Isaak Hassid
Edward J. and Carolyn P. Boling Chair of Space Propulsion	Dr. Gary A. Flandro	Goodman Chair in Medicine	Dr. Andrew H. Kang
H. H. Arnold Chair of Computational Mechanics	Dr. Charles L. Merkle	Mark S. Soloway Chair in Urology	Dr. Mitchell S. Steiner

SOURCE: Office of the Vice President of Budget and Finance

)

**UNRESTRICTED EXPENDITURES AND TRANSFERS
BY BUDGETARY FUNCTION
WITH PERCENT DISTRIBUTION OF EXPENDITURES, FY 1998-2003**

	ACTUAL					BUDGET
	FY 1998	FY 1999	FY 2000	FY 2001	FY 2002*	FY 2003*
TOTAL UNRESTRICTED CURRENT FUNDS						
EXPENDITURES & TRANSFERS	345,146,682	369,240,287	394,258,034	421,966,402	794,335,522	818,227,600
TOTAL ED. & GEN. EXPENDITURES	242,855,722	262,019,679	279,804,514	311,174,878	607,338,685	674,882,893
TRANSFERS (IN)/OUT	15,102,593	11,888,583	13,721,676	9,428,665	18,647,610	(31,628,286)
TOTAL EDUCATION & GENERAL	257,958,315	273,908,262	293,526,190	320,603,543	625,986,295	643,254,607
AUXILIARY ENTERPRISES FUNDS	87,188,367	95,332,025	100,731,844	101,362,859	113,550,871	114,844,688
WILLIAM F. BOWLD HOSPITAL					54,798,356	60,128,305
EDUCATION & GENERAL						
Instruction	122,894,681	130,040,586	137,309,553	151,998,747	292,370,372	322,349,462
Research	6,816,710	8,434,848	10,884,539	16,088,550	50,393,860	69,258,182
Public Service	4,169,164	6,318,814	6,388,619	8,447,752	44,586,464	50,904,133
Academic Support	36,544,026	38,239,099	39,122,071	38,697,879	64,826,315	69,529,199
Student Services	24,178,032	26,494,951	25,921,129	27,618,852	31,308,986	30,624,857
Institutional Support	14,989,740	16,731,590	18,614,590	18,990,133	46,816,694	53,439,619
Operation and Maintenance of Physical Plant	23,995,605	25,302,195	27,917,929	34,650,354	54,797,869	53,840,713
Scholarship/Fellowship	9,267,764	10,457,596	13,646,083	14,682,611	22,238,125	24,936,728
EXPENSES AS A PERCENT OF TOTAL EDUCATION & GENERAL						
Instruction	47.6%	47.5%	46.8%	47.4%	46.7%	50.1%
Research	2.6%	3.1%	3.7%	5.0%	8.1%	10.8%
Public Service	1.6%	2.3%	2.2%	2.6%	7.1%	7.9%
Academic Support	14.2%	14.0%	13.3%	12.1%	10.4%	10.8%
Student Services	9.4%	9.7%	8.8%	8.6%	5.0%	4.8%
Institutional Support	5.8%	6.1%	6.3%	5.9%	7.5%	8.3%
Operation & Maintenance of Physical Plant	9.3%	9.2%	9.5%	10.8%	8.8%	8.4%
Scholarship/Fellowship	3.6%	3.8%	4.6%	4.6%	3.6%	3.9%

SOURCE: Office of the Director of Finance

*Actual 2002 and Budget 2003 include Knoxville, Institute of Agriculture, Veterinary Medicine, Space Institute, and Health Science Center

948,000,000,000
948,000,000

)

**UNRESTRICTED CURRENT REVENUE
BY BUDGETARY FUNCTION AND REVENUE DOLLARS
PER FULL-TIME EQUIVALENT STUDENT, FY 1998-2003**

	ACTUAL					BUDGET
	FY 1998	FY 1999	FY 2000	FY 2001	FY 2002*	FY 2003*
TOTAL REVENUE	352,821,481	360,863,103	388,858,212	421,966,402	794,335,523	818,227,600
TOTAL EDUCATION & GENERAL REVENUE	257,958,315	273,908,264	293,526,189	320,603,544	625,986,296	643,254,607
TOTAL AUXILIARY REVENUE	94,863,166	86,954,839	95,332,023	101,362,858	113,550,871	114,844,688
TOTAL WILLIAM F. BOWLD HOSPITAL					54,798,356	60,128,305
EDUCATION & GENERAL REVENUE						
Tuition and Fees	92,056,611	99,625,616	117,139,551	127,214,919	166,396,798	175,711,134
Federal Appropriations					13,760,810	13,232,199
State Appropriations	146,180,700	151,841,800	150,779,000	164,044,500	336,449,800	352,868,200
Local Appropriations					3,871,849	3,950,062
Federal Gifts, Grants and Contracts	7,380,236	6,619,524	8,618,313	8,361,816	40,476,127	37,307,188
State Gifts, Grants and Contracts	1,216,870	1,530,748	2,302,641	3,389,705	10,056,703	8,723,598
Local Gifts, Grants and Contracts	45,426	67,688	48,734	38,803	8,485,231	7,095,691
Private Gifts, Grants and Contracts	1,734,089	1,513,541	2,068,432	1,956,480	3,417,503	3,571,000
Gifts				649,719	701,090	681,500
Endowment Income	35,174	34,422	32,351	32,279	31,726	42,000
Sale and Service of Educational Activities	5,694,365	5,823,294	5,588,645	5,671,089	34,248,144	33,299,696
Other Sources	3,614,844	6,851,631	6,948,522	9,244,234	8,090,515	6,772,339
REVENUE DOLLARS PER FULL-TIME EQUIVALENT (FTE) STUDENT						
Revenue dollars per FTE Student	16,495	15,840	17,069	18,202	31,605	32,472
Education and General Revenue dollars per FTE Student	12,060	12,023	12,884	13,829	24,907	25,528
State Appropriation dollars per FTE Student	6,834	6,665	6,618	7,076	13,387	14,004
Number of FTE Students	21,389	22,782	22,782	23,183	25,133	25,198

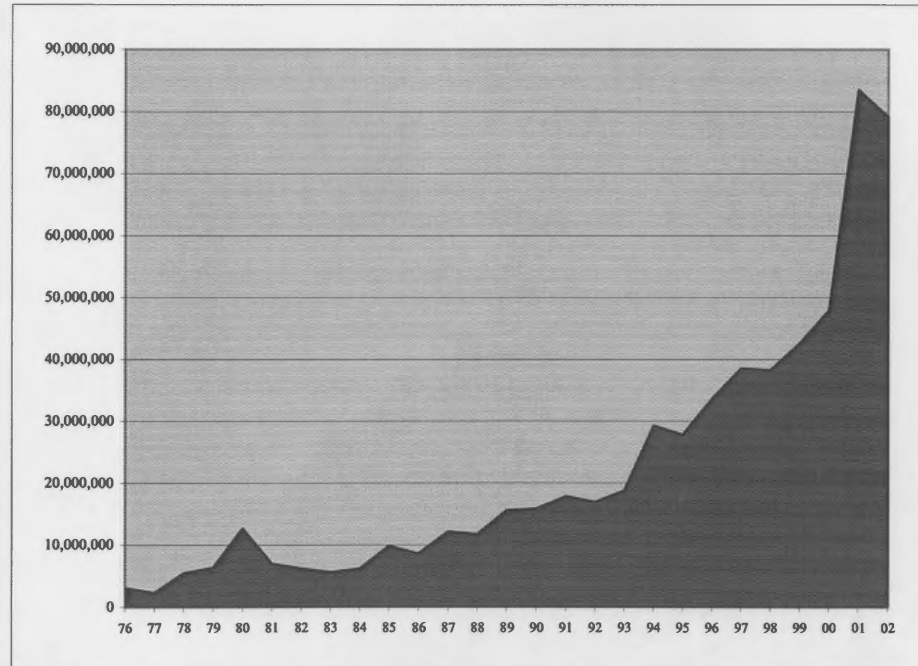
SOURCE: Office of the Director of Finance

NOTES: Endowment Income only includes income from Land Grant Endowment. Income from endowments created by private gifts are credited to the University of Tennessee System. Beginning in FY 2001, Gifts are reported separately from Grants and Contracts.

*Actual 2002 and Budget 2003 include Knoxville, Institute of Agriculture, Veterinary Medicine, Space Institute, and Health Science Center

NUMBER OF CONTRIBUTORS AND GIFTS FY 1977-2002

FISCAL YEAR	NUMBER OF DONORS	AMOUNT RAISED	AVERAGE GIFT
1976-77	N/A	2,318,564	N/A
1977-78	7,395	5,504,777	744
1978-79	7,754	6,434,738	830
1979-80	7,392	12,716,283	1,720
1980-81	8,224	6,997,761	851
1981-82	8,879	6,279,800	707
1982-83	8,926	5,608,056	628
1983-84	9,304	6,196,738	666
1984-85	10,364	9,826,048	948
1985-86	14,721	8,597,822	584
1986-87	19,947	12,133,924	608
1987-88	21,201	11,727,440	553
1988-89	21,227	15,581,262	734
1989-90	21,815	15,837,319	726
1990-91	23,359	17,876,619	765
1991-92	26,661	16,913,594	616
1992-93	27,701	18,807,636	679
1993-94	28,562	29,303,723	1,026
1994-95	31,621	27,861,586	881
1995-96	33,054	33,621,901	1,017
1996-97	33,026	38,536,237	1,167
1997-98	33,911	38,319,362	1,130
1998-99	37,117	42,583,818	1,147
1999-00	35,069	48,004,161	1,369
2000-01	46,546	83,519,546	1,794
2001-02	43,625	79,075,888	1,813



SOURCE: Development Office

NOTE: 2000-01 figures are corrected from the 2001-02 edition of the Fact Book

)

**AVERAGE SALARIES OF FULL-TIME INSTRUCTIONAL FACULTY
BY COLLEGE AND RANK
FY 2002-2003**

COLLEGE/SCHOOL	ALL RANKS	PROFESSOR	ASSOCIATE PROFESSOR	ASSISTANT PROFESSOR	INSTRUCTOR	LECTURER
ALL COLLEGES	66,074	83,432	63,489	52,292	39,305	32,683
Agricultural Science and Natural Resources	65,035	75,670	59,929	49,290	*	
Architecture & Design	59,761	73,422	62,879	49,436		39,296
Arts and Sciences--Humanities	50,550	70,892	52,697	44,092	36,774	28,628
Arts and Sciences--Natural Sciences	70,277	87,564	63,986	52,486	*	31,757
Arts and Sciences--Social Sciences	60,577	75,115	57,097	46,224	35,662	31,734
Business Administration	86,055	108,143	83,653	73,006	51,801	51,543
Communication & Information	58,107	77,742	57,418	46,181	41,303	30,000
Education, Health & Human Services	61,422	75,339	55,312	48,922	36,090	35,457
Engineering	79,333	89,773	69,506	62,950	*	
Health Science Center	66,486	80,683	62,788	56,191	*	
Law	106,614	124,991	85,613			
Nursing	52,630	79,291	61,711	50,260	34,958	
Social Work	60,357	80,881	61,192	50,482		*
Veterinary Medicine	69,427	83,735	71,365	54,934	*	

SOURCE: HRIS

*If less than three individuals, salaries are not reported

NOTE: Includes Knoxville, Institute of Agriculture, Veterinary Medicine, Space Institute, and Health Science Center

MEDIAN GRADUATE ASSISTANT STIPENDS FY 1984-2003

FY	TOTAL ASSISTANTSHIPS		GRADUATE TEACHING ASSOCIATE		GRADUATE TEACHING ASSISTANT		GRADUATE RESEARCH ASSISTANT		GRADUATE ASSISTANT	
	Number of Students	Median Stipend	Number of Students	Median Stipend	Number of Students	Median Stipend	Number of Students	Median Stipend	Number of Students	Median Stipend
1983-84	1,177	4,801	5	5,073	599	4,908	199	6,340	374	3,976
1984-85	1,251	5,497	3	7,674	642	5,723	181	7,068	425	4,574
1985-86	1,343	5,778	2	6,399	680	6,062	198	7,323	463	4,886
1986-87	1,432	6,281	6	5,856	682	6,497	265	6,871	479	5,130
1987-88	1,468	6,535	178	6,846	541	6,697	309	6,953	440	5,335
1988-89	1,581	6,773	193	7,120	553	6,847	279	6,891	556	5,870
1989-90	1,659	7,095	212	7,405	571	7,121	351	7,821	525	5,884
1990-91	1,755	7,620	227	8,265	550	7,651	407	8,259	571	6,618
1991-92	1,727	7,697	247	7,701	542	7,721	440	8,180	498	6,577
1992-93	1,809	7,712	247	7,701	584	7,719	424	8,834	554	6,577
1993-94	1,881	8,077	276	8,247	606	8,005	445	9,652	554	7,041
1994-95	1,928	8,805	336	8,923	585	9,006	426	10,144	581	7,470
1995-96	1,855	8,666	317	8,922	558	8,624	388	9,829	592	7,323
1996-97	1,786	8,926	320	9,230	554	9,386	388	10,110	524	7,282
1997-98	1,731	9,028	307	9,231	557	9,434	354	10,161	513	7,455
1998-99	1,777	9,462	329	9,686	550	9,045	364	11,119	534	7,438
1999-00	1,780	10,220	316	10,883	591	10,552	347	11,567	526	8,562
2000-01	1,762	10,669	285	11,100	584	11,006	338	12,065	555	9,245
2001-02	1,879	11,834	290	12,943	622	12,488	355	13,163	612	9,873
2002-03	2,113	12,041	298	12,785	636	12,532	511	12,674	668	10,758

SOURCE: EE06 Work Tape

NOTE: Stipends were equated to a half-time (20-hour week) academic year salary

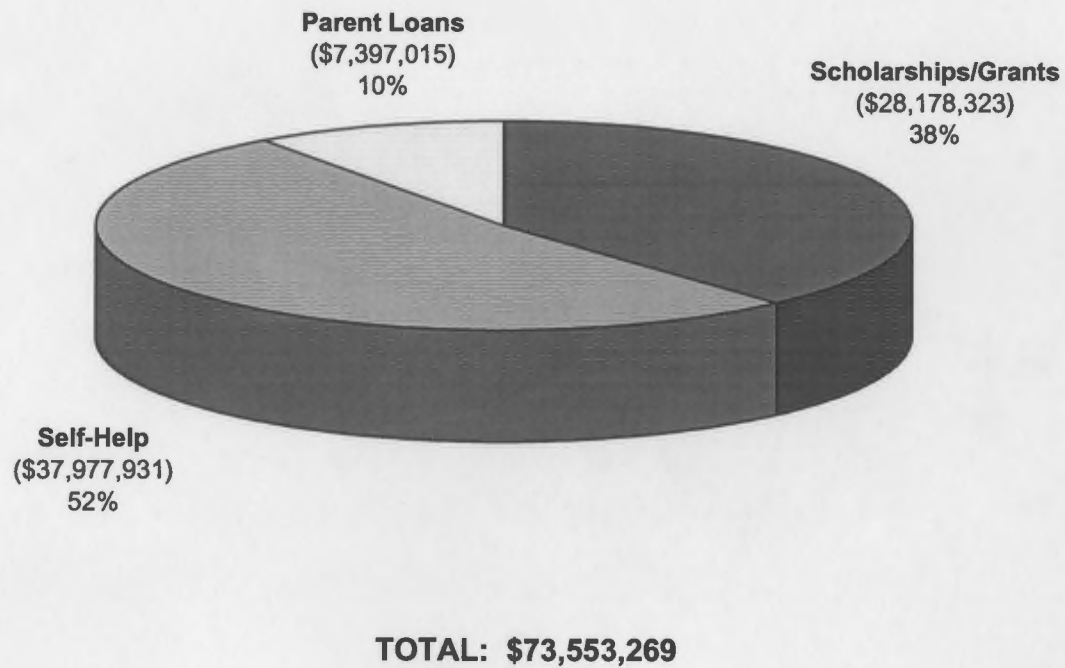
STUDENT TUITION BY LEVEL ACADEMIC YEAR 2002-2003

	IN-STATE	OUT-OF-STATE
KNOXVILLE CAMPUS		
UNDERGRADUATE	4,056	12,408
GRADUATE	4,590	12,942
LAW	7,156	19,212
VET MED	8,458	22,914
HEALTH SCIENCE CENTER		
ALLIED HEALTH		
Cytotechnology	4,717	15,331
Dental Hygiene - First Year	3,638	11,588
Dental Hygiene - Second Year	3,538	11,488
Health Information Management	4,676	14,945
Medical Technology - First Year	5,200	16,669
Medical Technology - Second Year	3,372	11,018
Occupational Therapy - First Year	5,291	17,228
Occupational Therapy - Second Year	3,468	11,426
Occupational Therapy - Third Year	946	5,724
Physical Therapy - First Year	5,976	13,924
Physical Therapy - Second Year	5,672	13,343
Physical Therapy - Third Year	5,672	13,343
COLLEGE OF NURSING		
First Year or Returning Student	6,262	14,599
December Graduate	2,981	6,999
MSN December Graduate	2,981	6,999

	IN-STATE	OUT-OF-STATE
HEALTH SCIENCE CENTER (Continued)		
GRADUATE HEALTH SCIENCES		
First Year	5,544	16,152
Returning Student	5,351	15,589
December Graduate	2,579	7,513
June Graduate	5,351	15,589
COLLEGE OF DENTISTRY		
First Year	11,295	27,927
Second Year	11,119	27,751
Third Year	11,119	27,751
Fourth Year	11,154	27,786
COLLEGE OF MEDICINE		
First Year	16,271	32,185
Second Year	16,171	32,085
Third Year	16,118	32,032
Fourth Year	16,118	32,032
COLLEGE OF PHARMACY		
First Year	7,942	18,654
Second Year	7,842	18,554
Third Year	7,864	18,576
Fourth Year	7,864	18,576
SPACE INSTITUTE		
GRADUATE	4,190	12,292

SOURCE: Office of Financial Aid

NEED-BASED FINANCIAL AID ACADEMIC YEAR 2002-2003



SOURCE: Office of Financial Aid

NUMBER AND PERCENT OF OCCUPANCY FOR STUDENT RESIDENCE HALLS AND MARRIED/GRADUATE STUDENT HOUSING, FALL 2002

STUDENT RESIDENCE HALLS				
HALL NAME	NUMBER OF ROOMS	NUMBER OF BEDS	OCCUPANCY AS OF 9-24-02	PERCENT OCCUPANCY
TOTAL	3,593	7,337	6,310	86%
Apartment Residence Hall	306	1,150	1,025	89%
Clement Hall	353	703	576	82%
Gibbs Hall	116	218	189	87%
Greve Hall	199	381	301	79%
Hess Hall	512	1,026	832	81%
Humes Hall	260	518	493	95%
Massey Hall	292	584	454	78%
Melrose Hall	224	191	173	91%
Morrill Hall	379	757	654	86%
North Carrick Hall	248	494	423	86%
Reese Hall	260	512	490	96%
South Carrick Hall	271	530	488	92%
Strong Hall	173	273	212	78%

MARRIED/GRADUATE STUDENT HOUSING				
APARTMENT COMPLEX	NUMBER OF BUILDINGS	NUMBER OF APARTMENTS	OCCUPANCY AS OF 9-24-02	PERCENT OCCUPANCY
TOTAL	65	1,669	1,387	83%
Taliwa Court Apartments	14	79	34	43%
Taliwa Court Addition Apartments	1	60	19	32%
Woodlawn Apartments	10	147	108	73%
Golf Range Apartments	25	417	311	75%
Laurel Apartments	1	316	270	85%
Kingston Apartments	1	233	174	75%
Sutherland Apartments	13	417	315	76%
Goodman Family Residence Hall (Memphis)	1	192	156	81%

SOURCE: Department of University Housing

)

**MAIN LIBRARY AND BRANCHES
HOLDINGS AND EXPENDITURES
FY 1998-2002**

CATALOGED MATERIALS	FY 97/98	FY 98/99	FY 99/00	FY 00/01	FY 01/02	FY 98-02 % CHANGE
TITLES	1,069,587	1,097,241	1,121,600	1,157,773	1,182,995	10.60
VOLUMES	1,982,987	2,023,845	2,063,284	2,120,518	2,152,555	8.55
COLLECTIONS						
MAIN LIBRARY						
General Collection	1,763,833	1,798,821	1,833,688	1,884,758	1,913,122	8.46
Special Collection	46,391	47,874	48,946	49,874	51,601	11.23
BRANCHES						
Agriculture-Vet Med	115,598	117,657	120,079	124,760	127,942	10.68
Cartographic Information Center	1,202	1,310	1,401	1,500	1,514	25.96
Music	36,677	37,847	38,524	38,678	37,267	1.61
Social Work Library, Nashville	19,286	20,336	20,646	20,948	21,109	9.45
NON-PRINT MATERIALS						
Audio	28,334	28,706	27,621	28,328	28,525	0.67
Cartographic	3,516	3,805	4,110	4,251	4,339	23.41
Film/Video	7,674	8,197	8,861	9,527	9,719	26.65
Graphic	143,086	135,720	133,728	130,562	124,153	(13.23)
Microform	2,319,984	2,356,296	2,395,224	2,418,310	2,476,362	6.74
Computer File/CD-ROM	1,087	1,149	1,221	1,290	1,431	31.65
PERIODICALS AND OTHER SERIALS RECEIVED						
Number of Titles	11,156	10,191	11,902	13,309	14,073	26.15
EXPENDITURES	10,234,262	10,845,325	11,898,192	11,790,275	12,302,454	20.21

SOURCE: Office of the Dean of Libraries

)

**LAW LIBRARY
HOLDINGS AND EXPENDITURES
FY 1998-2002**

CATALOGED MATERIALS	FY 97/98	FY 98/99	FY 99/00	FY 00/01	FY 01/02	FY 98-02 % CHANGE
TITLES	91,813	93,733	95,337	97,308	98,975	7.8
VOLUMES AND EQUIVALENTS	452,892	469,108	483,372	498,656	515,524	13.8
COLLECTIONS						
Titles	52,480	54,326	55,754	57,690	59,336	13.1
Total volumes	262,931	272,881	281,018	290,605	300,773	14.4
Net volumes added	10,107	9,950	8,137	9,587	10,168	0.6
NON-PRINT MATERIALS						
Non-print titles	39,333	39,407	39,583	39,618	39,639	0.8
Microfilm reels	1,071	1,073	1,088	1,104	1,134	5.9
Microfiche units	1,107,637	1,145,172	1,182,566	1,216,264	1,254,502	13.3
Microform equivalent volumes	189,961	190,862	202,354	208,051	214,754	13.1
SERIALS						
Serial Titles	5,685	5,828	5,726	5,726	6,174	8.6
Number of Serial Subscriptions	6,277	6,465	6,363	6,363	6,847	9.1
EXPENDITURES	1,956,360	2,096,338	2,130,916	2,204,143	2,318,174	18.5

SOURCE: College of Law Library

)

**HEALTH SCIENCE CENTER LIBRARY
HOLDINGS AND EXPENDITURES
FY 1998-2002**

CATALOGED MATERIALS	FY 97/98	FY 98/99	FY 99/00	FY 00/01	FY 01/02	FY 98-02 % CHANGE
TITLES	48,767	38,538	39,990	38,812	39,535	(18.93)
VOLUMES	183,767	182,304	185,204	185,860	187,349	1.95
COLLECTIONS						
General Collection	183,767	182,304	185,204	185,860	187,349	1.95
NON-PRINT MATERIALS						
Audiovisual	NA	2,367	2,385	2,395	2,438	3.00
Microform	NA	105	105	105	105	0.00
Computer File/CD-ROM	NA	NA	16	16	16	0.00
PERIODICALS RECEIVED						
Number of Titles	1,354	1,405	1,349	1,458	1,460	7.83
EXPENDITURES	1,818,050	2,231,616	2,285,537	2,209,208	2,125,305	16.90

SOURCE: Health Sciences Library & Education Center

NOTE: Percentages for non-print materials uses first year available as base year

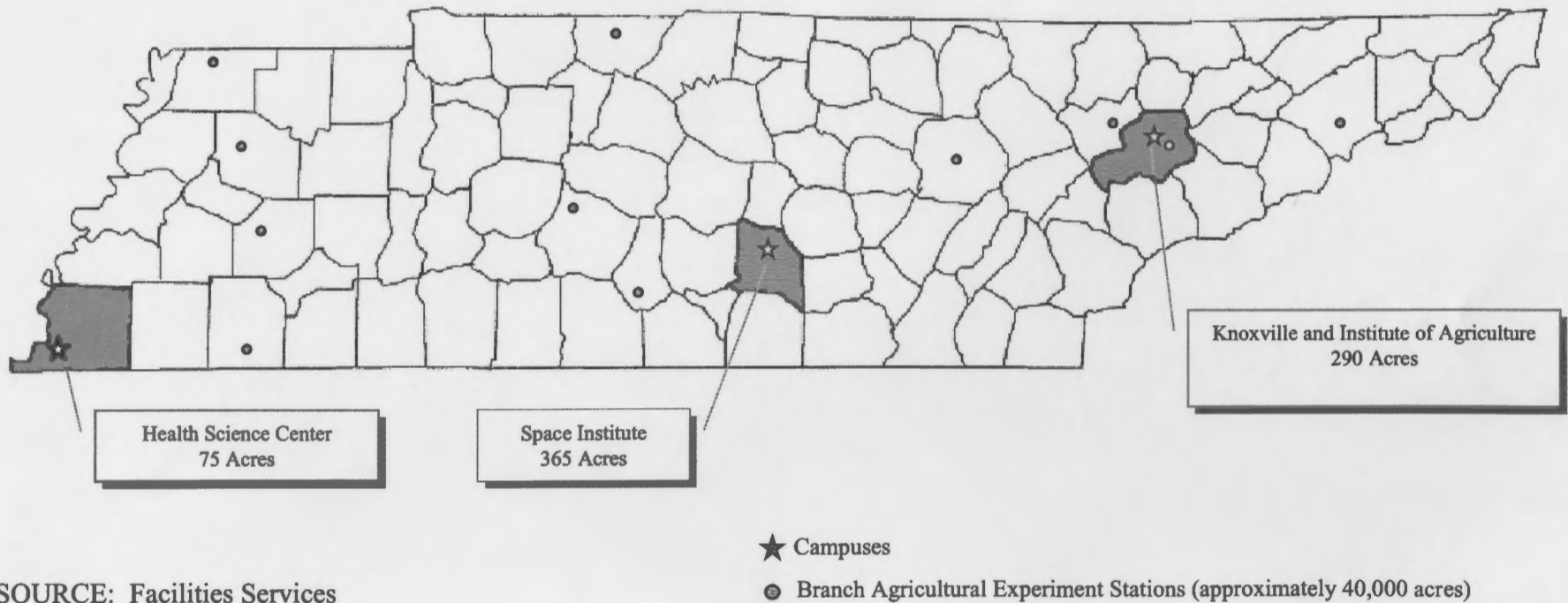
)

**SPACE INSTITUTE LIBRARY
HOLDINGS AND EXPENDITURES
FY 2001-2002**

CATALOGED MATERIALS	FY 00/01	FY 01/02	FY 01-02 % CHANGE
VOLUMES	75,224	75,788	0.75
COLLECTIONS			
Bound volumes	23,927	24,380	1.89
Technical Reports	51,327	51,407	0.16
Net volumes added	645	569	(11.78)
NON-PRINT MATERIALS			
Film/Video	79	79	0.00
Microform	209,480	211,865	1.14
Computer File	64	64	0.00
Other Audio/Visual	143	154	7.69
PERIODICALS AND OTHER SERIALS RECEIVED			
Number of Titles	214	186	(13.08)
EXPENDITURES	233,772	215,181	(7.95)

SOURCE: Office of the Dean of Libraries

UNIVERSITY OF TENNESSEE FACILITIES AND ACREAGE FALL 2002



SOURCE: Facilities Services

**ONE YEAR RETENTION RATES
FIRST-TIME, FULL-TIME FRESHMEN
FALL TERMS 1983-2001**

Enrollment Year	Total		Male		Female		White		Black		Other	
	Number	Rate	Number	Rate	Number	Rate	Number	Rate	Number	Rate	Number	Rate
1983	3,150	77.9	1,631	77.9	1,519	77.9	2,874	78.1	184	75.5	92	75.0
1984	3,195	78.0	1,607	77.5	1,588	78.5	2,941	78.4	175	70.9	79	78.5
1985	3,299	78.7	1,694	77.9	1,605	79.6	3,055	79.0	191	75.4	53	77.4
1986	3,503	77.5	1,811	76.9	1,692	78.1	3,246	77.4	205	78.5	52	80.8
1987	3,683	78.6	1,886	77.7	1,797	79.5	3,437	78.8	181	74.0	65	78.5
1988	3,708	78.9	1,959	76.7	1,749	81.3	3,462	79.2	192	73.4	54	74.1
1989	3,296	80.0	1,696	79.4	1,600	80.7	3,045	80.1	185	80.5	66	77.3
1990	3,336	79.5	1,706	78.5	1,630	80.6	3,006	79.1	239	81.2	91	87.9
1991	2,986	81.5	1,540	80.7	1,446	82.4	2,668	81.4	217	80.7	101	86.1
1992	3,136	80.0	1,584	79.3	1,552	80.9	2,815	80.0	209	78.5	112	83.9
1993	2,799	78.6	1,391	77.3	1,408	79.8	2,521	78.4	175	78.9	103	81.6
1994	2,850	75.9	1,470	74.5	1,380	77.4	2,604	75.8	144	77.1	102	75.5
1995	3,427	76.8	1,639	74.8	1,788	78.6	3,141	76.2	153	83.7	133	84.2
1996	3,637	76.7	1,795	74.4	1,842	78.9	3,305	76.4	192	79.7	140	78.6
1997	3,823	78.1	1,882	76.7	1,941	79.4	3,408	77.8	243	84.0	172	76.2
1998	3,747	78.7	1,791	76.7	1,956	80.6	3,336	79.0	273	78.0	138	73.2
1999	4,099	75.4	1,931	71.7	2,168	78.7	3,607	75.8	328	72.6	164	74.4
2000	3,794	78.3	1,840	76.3	1,954	80.3	3,356	77.7	265	81.5	155	85.2
2001	3,898	75.5	1,914	72.1	1,984	78.8	3,405	75.7	190	75.1	203	69.0

SOURCE: Student Information System and Academic Inventory

**FOUR YEAR GRADUATION RATES
FIRST-TIME, FULL-TIME FRESHMEN
FALL TERMS 1983-1998**

Enrollment Year	Total		Male		Female		White		Black		Other	
	Number	Rate	Number	Rate	Number	Rate	Number	Rate	Number	Rate	Number	Rate
1983	3,150	23.0	1,631	17.7	1,519	28.8	2,874	23.8	184	10.9	92	25.0
1984	3,195	24.9	1,607	19.7	1,588	30.1	2,941	25.6	175	9.7	79	30.4
1985	3,299	24.1	1,694	19.7	1,605	28.8	3,055	24.8	191	11.0	53	30.2
1986	3,503	22.2	1,811	17.7	1,692	27.0	3,246	23.0	205	8.8	52	26.9
1987	3,683	21.4	1,886	14.5	1,797	28.6	3,437	22.0	181	7.7	65	26.2
1988	3,708	22.8	1,959	16.5	1,749	29.8	3,462	23.5	192	10.4	54	22.2
1989	3,296	24.7	1,696	19.6	1,600	30.1	3,045	25.6	185	8.7	66	30.3
1990	3,336	23.6	1,706	17.4	1,630	30.2	3,006	24.4	239	12.1	91	27.5
1991	2,986	25.1	1,540	17.3	1,446	33.5	2,668	25.1	217	21.2	101	34.7
1992	3,136	22.6	1,584	16.8	1,552	28.6	2,815	23.2	209	13.9	112	24.1
1993	2,799	24.1	1,391	17.3	1,408	30.8	2,521	24.7	175	15.4	103	23.3
1994	2,850	23.6	1,470	15.5	1,380	32.3	2,604	24.4	144	12.5	102	18.6
1995	3,427	26.8	1,639	20.2	1,788	32.9	3,141	27.0	153	19.0	133	31.6
1996	3,637	28.4	1,795	19.9	1,842	36.8	3,305	29.0	192	17.7	140	30.7
1997	3,823	27.5	1,882	19.3	1,941	35.4	3,408	28.0	243	20.6	172	26.2
1998	3,747	26.7	1,791	16.7	1,956	35.9	3,336	27.6	273	18.7	138	21.1

SOURCE: Student Information System and Academic Inventory

)

**FIVE YEAR GRADUATION RATES
FIRST-TIME, FULL-TIME FRESHMEN
FALL TERMS 1983-1997**

Enrollment Year	Total		Male		Female		White		Black		Other	
	Number	Rate	Number	Rate	Number	Rate	Number	Rate	Number	Rate	Number	Rate
1983	3,150	48.5	1,631	47.0	1,519	50.2	2,874	49.4	184	34.8	92	48.9
1984	3,195	45.6	1,607	42.1	1,588	49.1	2,941	46.3	175	30.3	79	50.6
1985	3,299	47.5	1,694	45.5	1,605	49.6	3,055	48.7	191	28.3	53	49.1
1986	3,503	45.0	1,811	41.7	1,692	48.5	3,246	45.9	205	32.2	52	40.4
1987	3,683	45.3	1,886	41.1	1,797	49.6	3,437	45.9	181	30.9	65	53.8
1988	3,708	49.1	1,959	44.1	1,749	54.7	3,462	49.8	192	36.5	54	46.3
1989	3,296	48.4	1,696	44.7	1,600	52.3	3,045	49.2	185	34.1	66	53.0
1990	3,336	48.5	1,706	44.1	1,630	53.1	3,006	49.5	239	33.9	91	55.0
1991	2,986	48.9	1,540	42.3	1,446	56.0	2,668	49.7	217	39.2	101	49.5
1992	3,136	48.4	1,584	44.6	1,552	52.3	2,815	49.4	209	34.9	112	48.2
1993	2,799	49.7	1,391	45.9	1,408	53.4	2,521	50.6	175	35.4	103	51.5
1994	2,850	50.7	1,470	44.6	1,380	54.6	2,604	50.7	144	36.1	102	34.3
1995	3,427	52.4	1,639	46.3	1,788	58.1	3,141	52.6	153	44.4	133	58.6
1996	3,637	51.8	1,795	45.7	1,842	57.8	3,305	52.4	192	39.1	140	55.0
1997	3,823	53.1	1,882	47.0	1,941	59.1	3,408	53.8	243	47.7	172	43.6

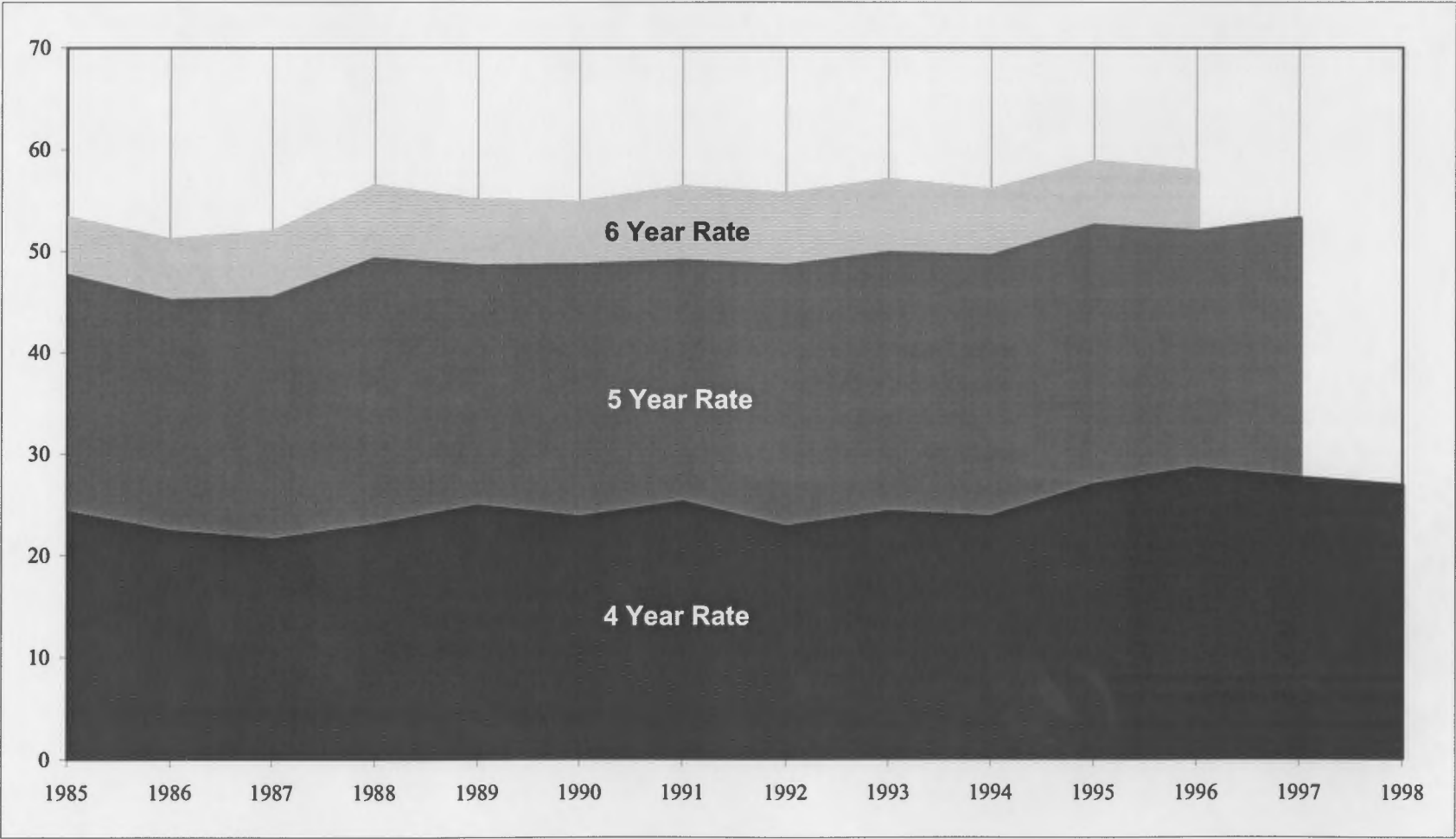
SOURCE: Student Information System and Academic Inventory

**SIX YEAR GRADUATION RATES
FIRST-TIME, FULL-TIME FRESHMEN
FALL TERMS 1983-1996**

Enrollment Year	Total		Male		Female		White		Black		Other	
	Number	Rate	Number	Rate	Number	Rate	Number	Rate	Number	Rate	Number	Rate
1983	3,150	54.4	1,631	54.0	1,519	55.0	2,874	55.2	184	43.5	92	52.2
1984	3,195	51.9	1,607	50.0	1,588	53.9	2,941	52.5	175	40.0	79	57.0
1985	3,299	53.2	1,694	52.0	1,605	54.5	3,055	54.2	191	36.1	53	56.6
1986	3,503	51.0	1,811	48.8	1,692	53.3	3,246	51.7	205	42.0	52	42.3
1987	3,683	51.8	1,886	49.2	1,797	54.6	3,437	52.1	181	42.5	65	63.1
1988	3,708	56.3	1,959	52.8	1,749	60.2	3,462	56.9	192	46.4	54	51.9
1989	3,296	54.9	1,696	53.1	1,600	56.8	3,045	55.5	185	42.7	66	62.1
1990	3,336	54.7	1,706	52.2	1,630	57.3	3,006	55.7	239	41.4	91	58.2
1991	2,986	56.2	1,540	51.7	1,446	60.9	2,668	56.9	217	46.5	101	58.4
1992	3,136	55.5	1,584	54.2	1,552	56.9	2,815	56.5	209	44.0	112	53.6
1993	2,799	56.9	1,391	54.9	1,408	58.9	2,521	57.4	175	45.1	103	64.1
1994	2,850	55.2	1,470	52.1	1,380	58.4	2,604	56.2	144	43.0	102	46.6
1995	3,427	58.7	1,639	54.1	1,788	63.0	3,141	58.8	153	52.9	133	62.4
1996	3,637	57.8	1,795	53.3	1,842	62.3	3,305	58.4	192	46.3	140	55.4

SOURCE: Student Information System and Academic Inventory

**GRADUATION RATES
FIRST-TIME, FULL-TIME FRESHMEN
FALL TERMS 1985-1998**



SOURCE: Student Information System and Academic Inventory

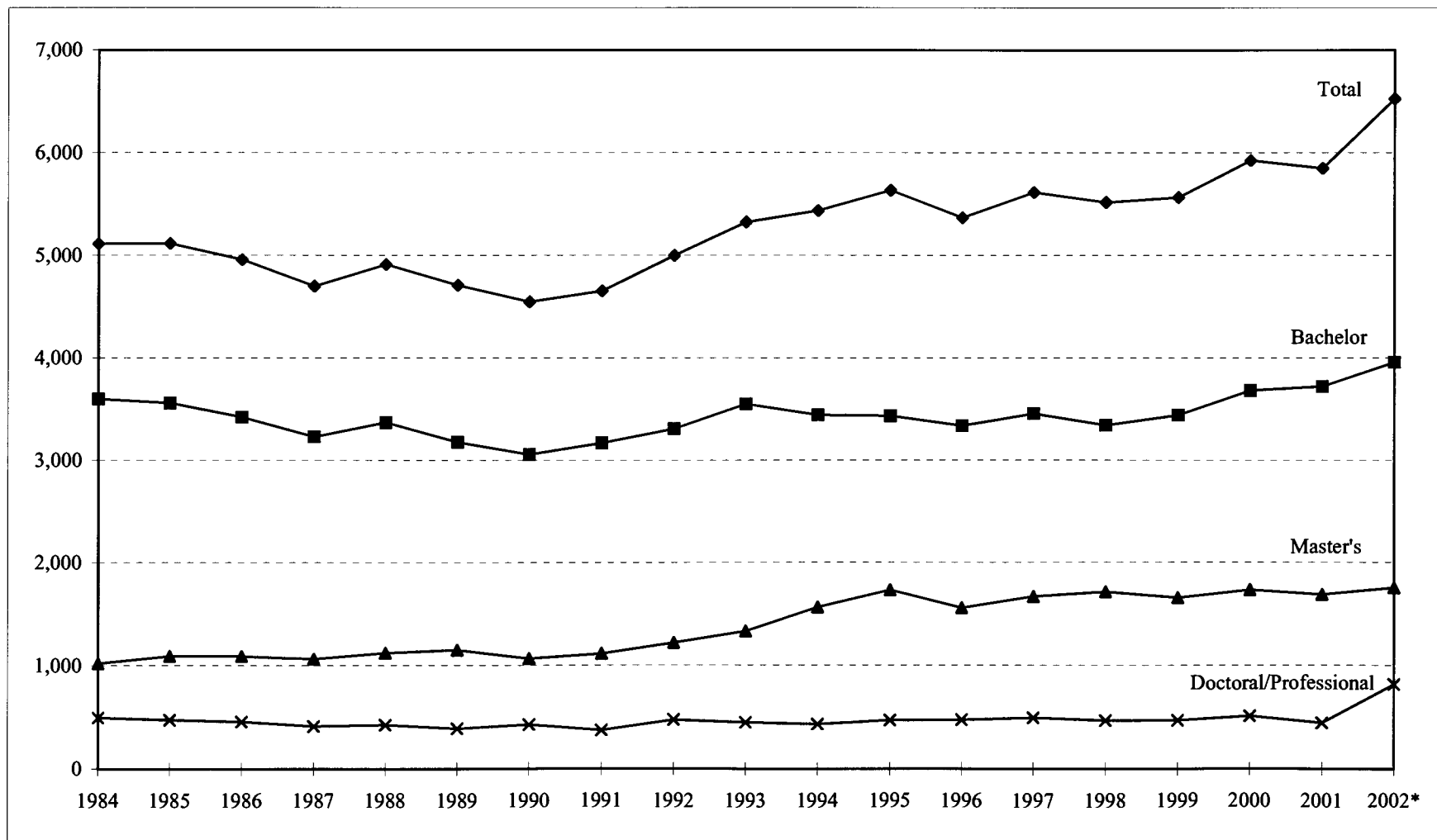
SUMMARY OF DEGREES CONFERRED BY DISCIPLINE FY 1998-2002

	BACHELOR					MASTER'S					DOCTORAL/PROFESSIONAL				
	97-98	98-99	99-00	00-01	01-02*	97-98	98-99	99-00	00-01	01-02*	97-98	98-99	99-00	00-01	01-02*
DEGREES AWARDED	3,340	3,443	3,681	3,722	3,959	1,712	1,655	1,753	1,687	1,752	467	468	512	441	817
DOCTORAL											254	255	286	239	276
PROFESSIONAL											213	213	226	202	541
COLLEGE/SCHOOL															
Agricultural Sciences & Natural Resources	218	232	207	224	226	69	60	62	77	63	7	17	12	5	11
Architecture & Planning	53	65	65	88	56	40	24	10	16	5	0	0	0	0	0
Arts & Sciences	1,508	1,509	1,488	1,373	1,558	307	292	287	235	273	95	113	118	93	90
Biomedical Science	0	0	0	0	0	1	0	0	0	0	5	4	0	2	2
Business Administration	473	571	633	824	768	198	231	258	280	263	16	16	16	18	8
Communication & Information	204	236	318	330	355	81	74	67	105	78	6	6	9	5	8
Education, Health & Human Sciences	428	432	501	459	491	649	631	639	598	597	73	52	83	70	86
Engineering	328	276	304	294	284	126	148	159	147	127	32	29	32	31	19
Health Science Center					71					102					361
Intercollegiate Programs	0	0	0	0	0	29	14	18	23	17	12	6	9	9	8
Law	0	0	0	0	0	0	0	0	0	0	149	155	164	144	154
Nursing	104	91	125	112	120	42	51	43	36	40	2	7	5	3	5
Social Work	24	31	40	18	30	170	130	210	170	187	6	5	2	3	3
Veterinary Medicine	0	0	0	0	0	0	0	0	0	0	64	58	62	58	62

SOURCE: Academic Inventory

*Beginning in 2002 data include Knoxville, Institute of Agriculture, Veterinary Medicine, Space Institute and Health Science Center

SUMMARY OF DEGREES CONFERRED BY LEVEL FY 1984-2002



SOURCE: Academic Inventory

*Beginning in 2002 data include Knoxville, Institute of Agriculture, Veterinary Medicine, Space Institute and Health Science Center

DISTRIBUTION OF ALUMNI BY STATE FALL 2002



SOURCE: Student Information System

NOTES: Includes Knoxville, Institute of Agriculture, Veterinary Medicine, Space Institute and Health Science Center; these figures may include duplicates. If an alumnus has degrees from both Knoxville and the Health Science Center, they are counted twice.

**DEGREES AWARDED BY MAJOR
FY 1996-2002**

Major	Degree Awarded	1995-96	1996-97	1997-98	1998-99	1999-00	2000-01	2001-02
Accounting	Bachelor's	117	112	102	99	129	184	144
	Master's	57	74	66	80	76	74	82
Advertising	Bachelor's	44	56	48	52	82	83	97
Aerospace Engineering	Bachelor's	8	10	6	3	10	11	9
	Master's	8	9	3	7	2	4	4
	PhD	0	3	2	0	1	1	1
Agricultural and Extension Education	Bachelor's	6	10	9	7	15	9	11
	Master's	6	7	9	7	10	11	11
Agricultural Economics & Business	Bachelor's	20	21	14	20	16	22	15
	Master's	4	8	10	3	4	12	6
	PhD	1	3	3	3	0	0	0
Agricultural Mechanization	Bachelor's	4	0	0	1	0	0	0
Anatomy *	Master's							0
	PhD							4
Animal Science	Bachelor's	43	50	46	40	35	61	56
	Master's	4	10	5	4	8	7	6
	PhD	1	2	1	4	2	0	6
Anthropology	Bachelor's	51	37	47	38	54	38	45
	Master's	4	16	9	13	8	7	11
	PhD	4	2	8	6	7	6	6
Architecture	Bachelor's	48	45	37	47	49	67	40
	Master's	0	1	5	5	10	16	5
Area, Ethnic and Cultural Studies	Bachelor's	21	40	47	36	63	35	59
Art History	Bachelor's	11	8	4	9	11	8	13
Art Education	Master's	3	1	0	0	0	0	0

**DEGREES AWARDED BY MAJOR
FY 1996-2002**

Major	Degree Awarded	1995-96	1996-97	1997-98	1998-99	1999-00	2000-01	2001-02
Audiology	Bachelor's	11	4	4	9	8	11	10
	Master's	26	11	9	14	14	16	15
Biochemistry & Cellular & Molecular Biology	Bachelor's	16	15	16	16	9	1	0
	Master's	2	2	4	0	0	5	6
	PhD	1	3	5	2	4	3	5
Biochemistry *	PhD							5
Biological Sciences	Master's	13	13	13	8	1	0	2
	PhD	10	7	10	8	1	3	2
Biological Sciences *	PhD							2
Biology	Bachelor's	92	118	121	145	137	129	107
Biomedical Engineering *	Master's							9
	PhD							0
Biosystems Engineering	Bachelor's	7	8	11	6	5	7	6
	Master's	4	3	0	2	1	5	3
	PhD	0	1	2	2	1	1	1
Biosystems Engineering Technology	Master's	6	6	7	4	5	0	6
Botany	Bachelor's	9	9	5	4	3	2	0
	Master's	4	7	2	3	2	4	0
	PhD	1	2	2	0	2	1	4
Broadcasting	Bachelor's	65	82	90	90	88	95	86
Business Administration	Bachelor's	77	55	60	78	89	90	95
	Master's	106	92	109	138	169	182	164
	PhD	12	9	11	5	8	9	5
Business/Marketing Education	Bachelor's	37	23	29	16	9	3	0

**DEGREES AWARDED BY MAJOR
FY 1996-2002**

Major	Degree Awarded	1995-96	1996-97	1997-98	1998-99	1999-00	2000-01	2001-02
Chemical Engineering	Bachelor's	39	57	37	27	36	42	27
	Master's	9	15	3	9	8	10	4
	PhD	3	10	3	3	7	0	3
Chemistry	Bachelor's	12	13	11	14	11	13	16
	Master's	3	7	10	7	7	5	3
	PhD	16	14	6	14	21	9	10
Child Development	Bachelor's	55	56	41	44	48	49	73
	Master's	5	13	23	11	33	23	30
Civil Engineering	Bachelor's	77	63	65	73	61	61	48
	Master's	17	30	18	20	40	28	22
	PhD	9	7	2	3	4	3	1
Classics	Bachelor's	1	2	2	5	6	7	7
Clinical Laboratory Sciences *	Master's							0
Counseling	Master's	9	7	16	13	13	11	16
Communications	Master's	28	18	31	39	25	27	26
	PhD	6	7	6	6	9	5	8
Comparative & Experimental Medicine	Master's	3	0	3	2	2	1	3
	PhD	6	3	6	6	5	4	5
Computer Engineering	Bachelor's	0	0	0	0	0	0	13
Computer Science	Bachelor's	14	20	29	25	22	35	45
	Master's	20	21	23	32	28	23	27
	PhD	3	4	5	3	3	2	1
Curriculum and Instruction	Master's	284	309	195	9	2	0	0
	PhD	6	12	3	0	0	0	0
Cytotechnology *	Bachelor's							5

**DEGREES AWARDED BY MAJOR
FY 1996-2002**

Major	Degree Awarded	1995-96	1996-97	1997-98	1998-99	1999-00	2000-01	2001-02
Dentistry *	DDS							75
Dental Sciences *	Master's							6
Dental Hygiene *	Bachelor's							25
Ecology & Evolutionary Biology	Bachelor's	0	0	0	0	0	1	1
	Master's	4	9	8	2	0	7	4
	PhD	5	3	3	3	2	8	3
Economics (CAS)	Bachelor's	53	55	60	57	55	77	92
Economics (CBA)	Bachelor's	4	3	7	10	9	11	8
	Master's	6	5	7	2	3	7	3
	PhD	12	4	4	5	6	7	3
Education Administration & Supervision	Master's	21	20	10	9	15	10	14
	PhD	8	16	7	7	9	7	2
Education	Master's	0	0	130	343	360	367	314
	PhD	33	38	37	28	55	42	54
Educational Psychology	Master's	20	32	33	42	29	36	48
	PhD	0	0	0	0	2	0	3
Electrical Engineering	Bachelor's	73	63	62	52	66	52	50
	Master's	23	23	14	17	19	14	11
	PhD	9	5	3	2	1	7	4
Engineering Physics	Bachelor's	2	2	1	1	2	3	1
Engineering Science	Bachelor's	27	19	21	15	11	21	23
	Master's	11	12	6	17	5	5	7
	PhD	9	6	6	3	4	4	2
English	Bachelor's	142	139	146	160	166	155	162
	Master's	13	15	22	16	26	12	18
	PhD	14	7	11	14	7	3	8

**DEGREES AWARDED BY MAJOR
FY 1996-2002**

Major	Degree Awarded	1995-96	1996-97	1997-98	1998-99	1999-00	2000-01	2001-02
Entomology & Plant Pathology	Master's	9	4	13	5	9	7	4
Environmental Engineering	Master's	37	34	25	21	16	9	9
Epidemiology *	Master's							5
Exercise Science	Bachelor's	0	47	47	35	48	54	48
Family Studies	Bachelor's	0	17	38	47	61	41	38
Finance	Bachelor's	107	132	116	136	144	146	135
Food Science and Technology	Bachelor's	11	6	5	15	7	6	12
	Master's	4	7	6	9	5	6	6
	PhD	3	5	1	2	4	1	3
Forestry	Bachelor's	38	26	19	29	17	16	21
	Master's	5	3	2	9	5	8	5
French	Bachelor's	16	9	9	12	9	14	12
	Master's	2	4	1	10	4	1	2
Geography	Bachelor's	15	22	19	21	16	16	19
	Master's	8	11	6	3	3	5	6
	PhD	3	2	3	2	2	3	2
Geology	Bachelor's	22	15	11	4	9	10	11
	Master's	7	8	6	8	7	8	10
	PhD	2	4	3	1	2	2	4
German	Bachelor's	8	10	9	9	9	10	7
	Master's	3	3	3	2	3	3	5
Graphic Design	Bachelor's	22	23	25	21	27	31	23
Health Education	Bachelor's	22	13	15	9	12	11	6
	Master's	9	11	9	5	7	4	7
	PhD	1	2	4	1	0	1	1

**DEGREES AWARDED BY MAJOR
FY 1996-2002**

Major	Degree Awarded	1995-96	1996-97	1997-98	1998-99	1999-00	2000-01	2001-02
Health Information Management *	Bachelor's							13
Health Science Administration *	PhD							3
History	Bachelor's	65	71	93	82	87	96	84
	Master's	6	9	11	12	3	3	9
	PhD	4	7	3	7	1	1	4
Hotel and Restaurant Management	Bachelor's	46	33	45	37	38	29	41
	Master's	2	8	0	2	0	0	0
Human Ecology Education	Bachelor's	2	4	1	0	0	0	0
Human Ecology	Master's	3	3	5	5	1	1	0
	PhD	13	26	22	16	17	20	26
Human Performance & Sports Studies	Bachelor's	49	5	2	2	1	0	0
	Master's	39	54	57	71	81	71	78
Human Resource Development	Bachelor's	32	60	29	43	57	39	50
	Master's	50	44	44	33	36	27	24
Human Services	Bachelor's	29	26	20	27	26	18	21
Industrial and Organizational Psychology	Master's	1	0	0	0	0	0	0
	PhD	4	11	1	3	4	5	3
Industrial Education	Bachelor's	0	0	0	0	0	10	3
Industrial Engineering	Bachelor's	35	30	38	33	34	36	37
	Master's	36	35	32	23	40	44	30
Information Sciences	Master's	34	46	50	35	42	78	52
Interior Design	Bachelor's	21	13	16	18	16	21	16
	Master's	3	0	4	3	0	0	0
Italian	Bachelor's	0	1	1	1	0	2	4

**DEGREES AWARDED BY MAJOR
FY 1996-2002**

Major	Degree Awarded	1995-96	1996-97	1997-98	1998-99	1999-00	2000-01	2001-02
Journalism	Bachelor's	68	69	66	94	94	109	139
Law	JD	142	134	149	155	164	144	154
Logistics and Transportation	Bachelor's	71	110	103	132	130	152	135
Management Science	Master's	1	7	4	4	2	4	2
	PhD	2	4	1	3	2	2	0
Marketing	Bachelor's	107	81	78	108	124	145	135
Materials Science & Engineering	Bachelor's	7	7	8	6	2	6	8
	Master's							6
Mathematics	Bachelor's	32	26	19	25	15	18	15
	Master's	18	21	15	16	19	12	14
	PhD	4	7	4	4	7	6	3
Mechanical Engineering	Bachelor's	76	70	79	59	76	62	58
	Master's	16	20	9	16	11	16	16
	PhD	4	0	5	4	6	6	4
Medical Technology	Bachelor's	11	11	5	5	5	5	8
Medical Technology *	Bachelor's							6
Medicine	MD							158
Metallurgical Engineering	Master's	6	6	2	7	5	6	4
	PhD	3	4	5	4	3	1	2
Microbiology	Bachelor's	20	15	15	14	19	13	3
	Master's	3	1	3	4	3	5	3
	PhD	3	5	8	1	4	6	2
Microbiology *	Master's							1
	PhD							1

**DEGREES AWARDED BY MAJOR
FY 1996-2002**

Major	Degree Awarded	1995-96	1996-97	1997-98	1998-99	1999-00	2000-01	2001-02
Modern Foreign Languages	PhD	2	2	2	1	3	2	2
Multi/Interdisciplinary Studies	Bachelor's	132	121	117	89	67	44	64
	Master's	20	11	17	12	16	22	14
Music Education	Bachelor's	4	0	0	0	0	0	0
Music	Bachelor's	16	20	27	25	21	30	36
	Master's	18	20	28	14	25	15	26
Nuclear Engineering	Bachelor's	11	12	11	7	6	0	10
	Master's	19	8	12	9	11	4	9
	PhD	6	5	6	7	3	6	2
Nursing	Bachelor's	102	101	104	91	125	112	120
	Master's	47	48	42	51	43	36	40
	PhD	5	1	2	7	5	3	6
Nursing *	Master's							25
	PhD							15
Nutrition	Bachelor's	13	22	8	10	12	16	15
	Master's	8	11	9	12	5	16	14
Occupational Therapy *	Bachelor's							21
Ornamental Horticulture	Bachelor's	43	45	42	44	65	65	56
	Master's	3	3	5	6	2	6	2
Pathology *	Master's							0
	PhD							4
Pharmacology *	Master's							0
	PhD							1
Pharmacy *	PharmD							92

**DEGREES AWARDED BY MAJOR
FY 1996-2002**

Major	Degree Awarded	1995-96	1996-97	1997-98	1998-99	1999-00	2000-01	2001-02
Physical Therapy *	Bachelor's							1
	Master's							54
Physiology *	Master's							1
	PhD							0
Pharmaceutics *	Master's							1
	PhD							1
Philosophy	Bachelor's	15	8	8	10	15	7	20
	Master's	4	8	4	3	6	6	9
	PhD	2	1	4	7	2	3	4
Physics	Bachelor's	5	4	4	2	3	3	7
	Master's	12	7	7	6	3	1	6
	PhD	9	8	8	4	10	13	7
Planning	Master's	4	11	35	16	23	21	16
Plant Science	Bachelor's	28	43	42	33	16	12	17
	Master's	7	12	6	5	7	7	7
	PhD	1	3	0	6	5	3	1
Political Science	Bachelor's	105	111	102	102	93	97	142
	Master's	7	6	4	8	5	2	7
	PhD	5	6	9	7	7	1	7
Polymer Engineering	Master's	4	1	2	2	2	8	5
	PhD	5	1	0	3	3	3	0
Psychology	Bachelor's	240	293	265	268	286	299	358
	Master's	4	13	10	5	4	8	10
	PhD	18	14	6	20	16	17	11
Public Administration	Bachelor's	8	7	6	2	2	4	8
	Master's	7	6	10	10	5	6	12

**DEGREES AWARDED BY MAJOR
FY 1996-2002**

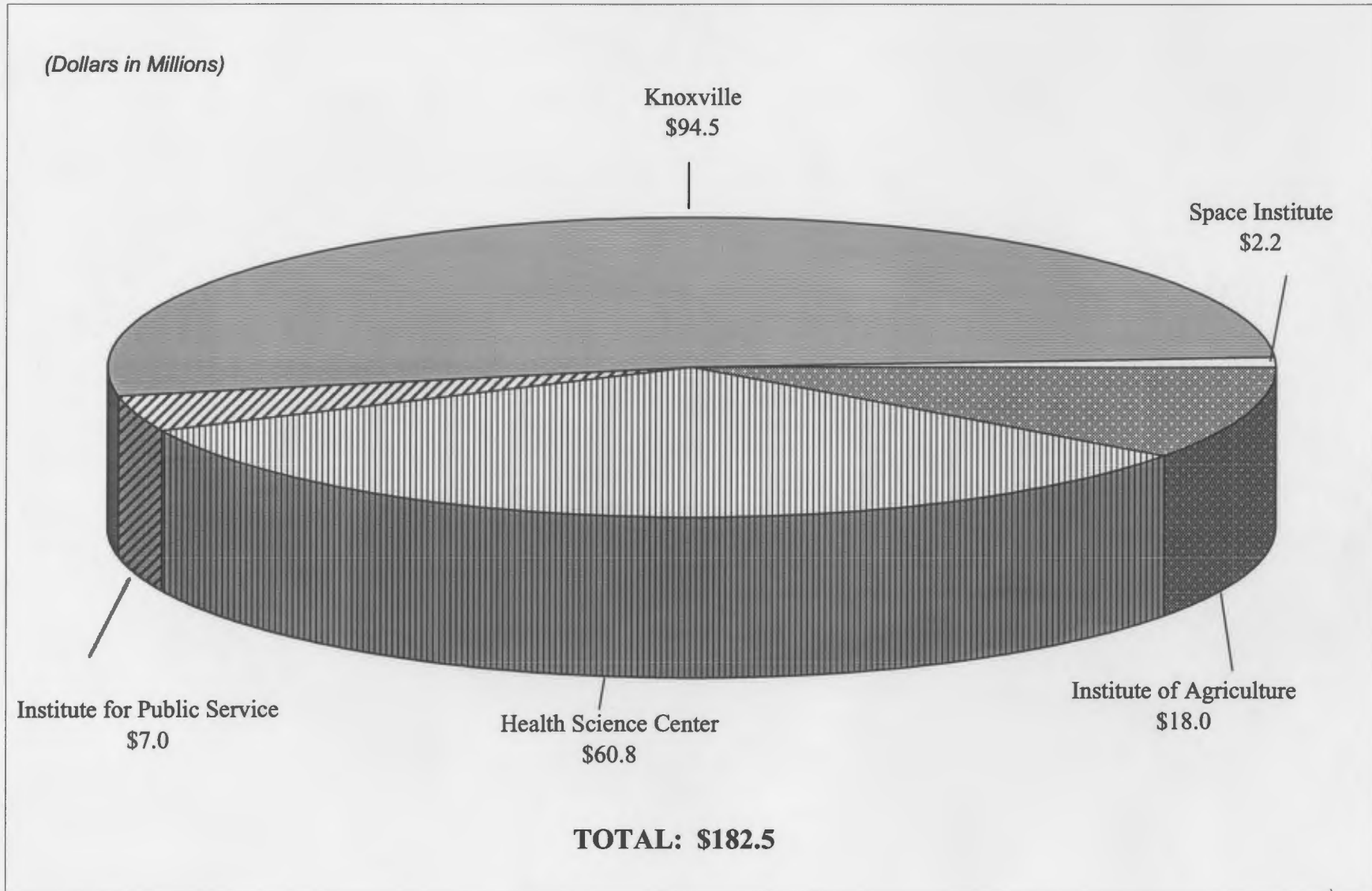
Major	Degree Awarded	1995-96	1996-97	1997-98	1998-99	1999-00	2000-01	2001-02
Public Health	Bachelor's	0	1	0	0	0	0	0
	Master's	21	15	23	23	24	17	28
Recreation & Tourism Management	Bachelor's	34	33	28	29	38	50	43
	Master's	14	11	16	10	13	8	15
Rehabilitation Counseling	Master's	12	16	15	9	2	0	0
Religious Studies	Bachelor's	11	10	12	11	13	7	8
Russian	Bachelor's	6	1	4	3	1	5	1
Safety Education & Service	Master's	18	8	10	13	12	0	2
Social Work	Bachelor's	30	34	24	31	40	18	30
	Master's	163	179	170	130	210	170	187
	PhD	3	1	6	5	2	3	3
Sociology	Bachelor's	70	75	91	106	100	100	123
	Master's	5	5	11	10	4	2	4
	PhD	4	4	2	3	4	6	3
Spanish	Bachelor's	20	18	16	25	38	29	39
	Master's	10	3	5	5	7	4	5
Special Education	Bachelor's	31	40	28	23	36	26	28
	Master's	36	44	47	15	2	2	0
Speech Communications	Bachelor's	41	45	46	53	54	43	33
Speech Pathology	Bachelor's	36	37	36	42	42	29	37
	Master's	53	47	72	64	56	38	34
	PhD	2	1	2	2	3	0	3
Sports Management	Bachelor's	11	22	32	44	59	50	68

**DEGREES AWARDED BY MAJOR
FY 1996-2002**

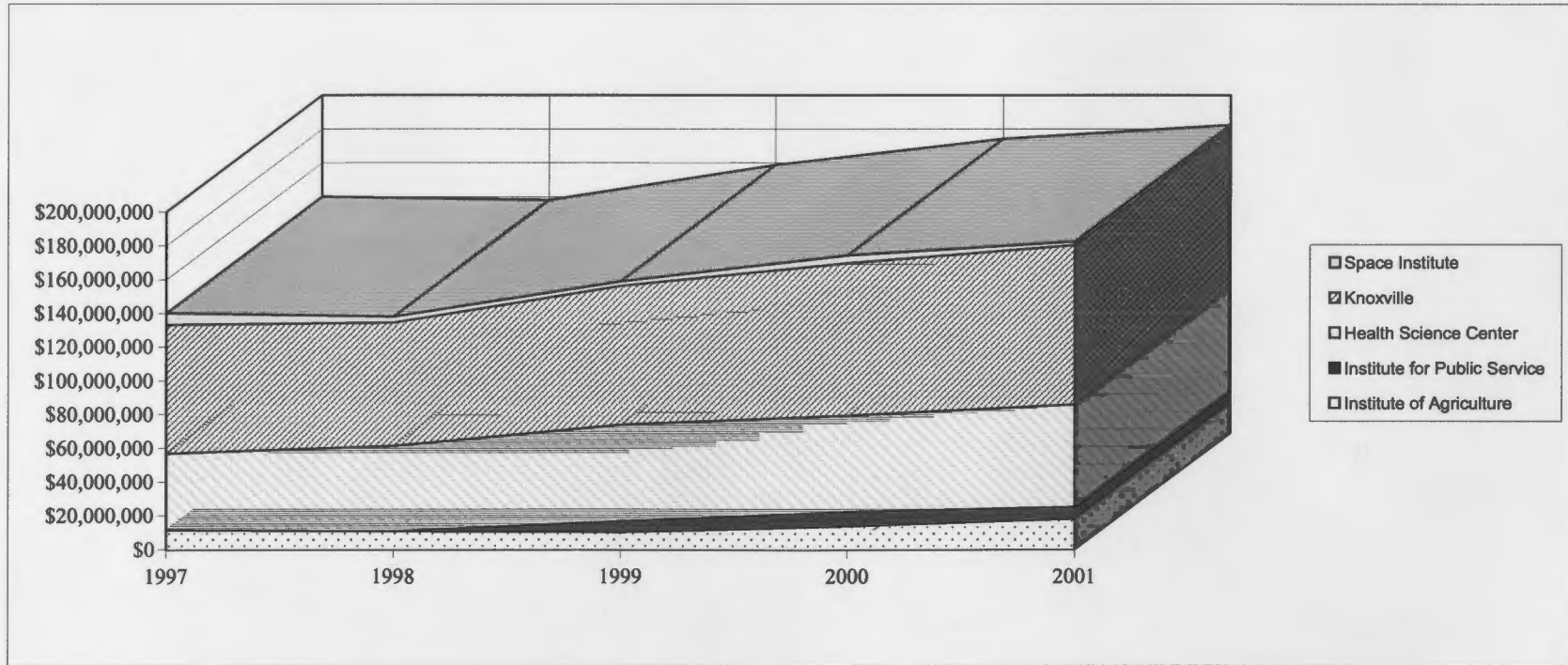
Major	Degree Awarded	1995-96	1996-97	1997-98	1998-99	1999-00	2000-01	2001-02
Statistics	Bachelor's	13	7	3	7	6	15	16
	Master's	10	8	12	7	9	13	12
Studio Art	Bachelor's	28	40	40	30	41	49	52
	Master's	11	13	9	7	8	13	6
Textiles, Retailing & Consumer Sciences	Bachelor's	76	62	65	66	56	63	57
	Master's	0	0	3	6	4	5	7
Theatre	Bachelor's	11	19	14	19	17	24	20
	Master's	2	8	6	3	11	3	3
Toxicology *	Master's							0
Veterinary Medicine	DVM	51	66	64	58	62	58	62
Wildlife and Fisheries Science	Bachelor's	38	46	30	37	31	26	32
	Master's	12	7	6	6	6	7	7
Zoology	Bachelor's	40	31	26	11	10	0	0
	Master's	1	2	6	7	1	0	0
	PhD	4	3	1	8	10	0	0
TOTALS								
	Bachelor's	3,336	3,455	3,340	3,443	3,681	3,722	3,959
	Master's	1,557	1,666	1,712	1,655	1,753	1,687	1,752
	PhD	281	295	254	255	286	239	276
	Professional	193	200	213	213	226	202	541
	All Degrees	5,367	5,616	5,519	5,566	5,946	5,850	6,528

*Denotes Degrees Awarded through the Health Science Center

**RESEARCH AWARDS
BY CAMPUS
FY 2001**



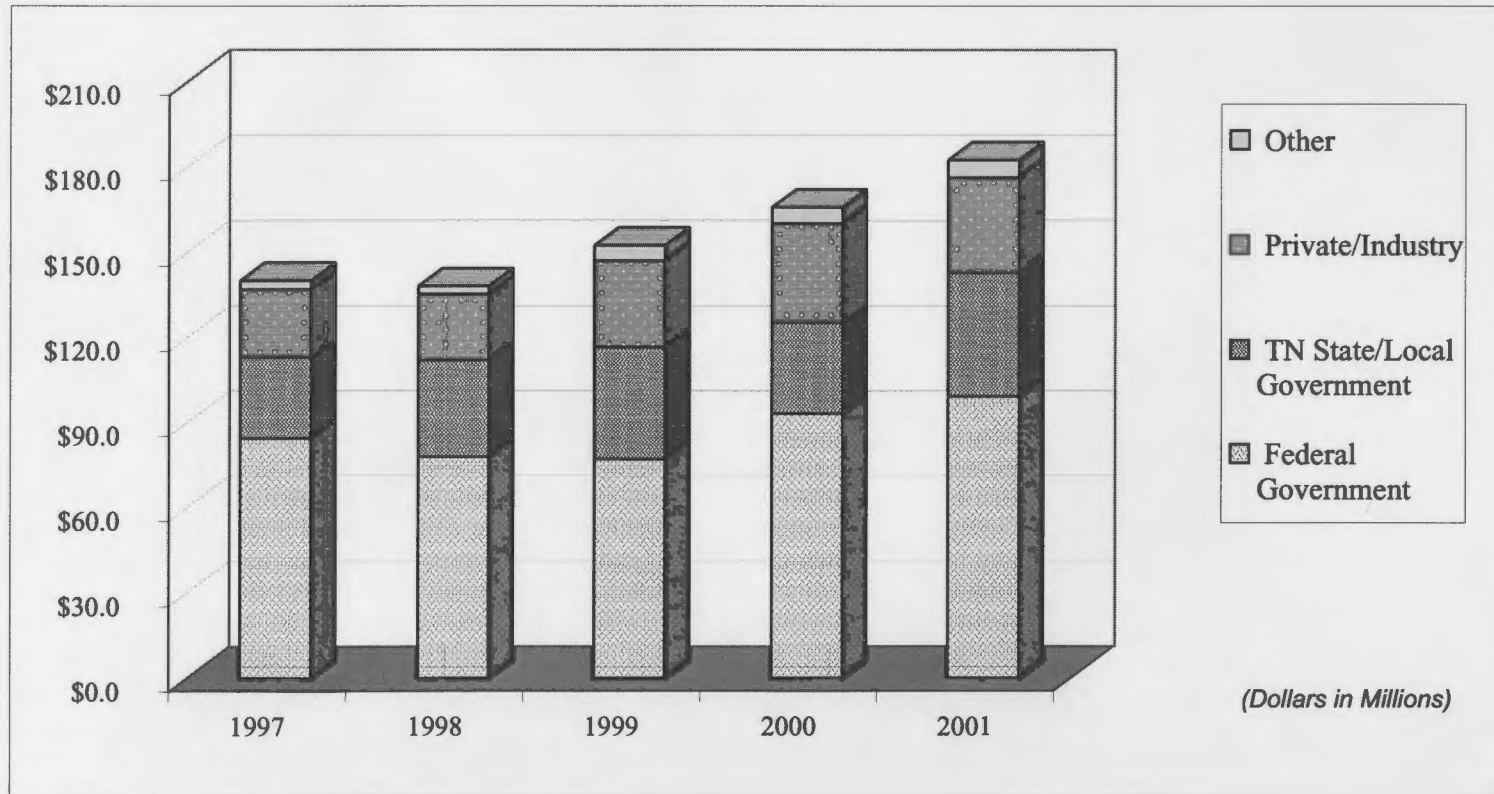
RESEARCH AWARDS BY CAMPUS FY 1997-2001



	1997	1998	1999	2000	2001
Institute of Agriculture	\$11,446,875	\$10,665,900	\$10,106,912	\$13,745,605	\$17,952,771
Institute for Public Service			\$6,512,867	\$8,535,818	\$7,020,252
Health Science Center	\$45,394,208	\$50,594,458	\$57,197,585	\$57,023,086	\$60,802,219
Knoxville	\$76,326,247	\$73,257,218	\$82,406,661	\$90,395,516	\$94,511,592
Space Institute	\$6,886,823	\$3,599,141	\$2,643,781	\$4,586,364	\$2,245,125
TOTAL	\$140,054,153	\$138,116,717	\$158,867,806	\$174,286,389	\$182,531,959

SOURCE: Office of Research Administration

RESEARCH AWARDS BY SOURCE FY 1997-2001



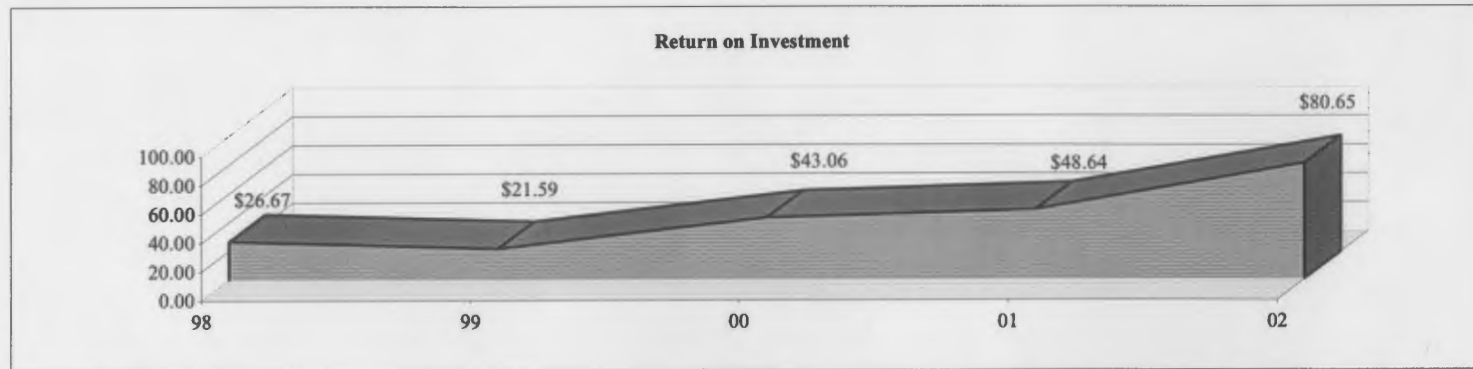
	1997	1998	1999	2000	2001
Federal Government	\$84.5	\$77.9	\$77.2	\$93.2	\$99.3
TN State/Local Government	\$28.5	\$34.2	\$39.5	\$32.2	\$43.6
Private/Industry	\$24.0	\$23.2	\$30.4	\$34.7	\$33.4
Other	\$3.1	\$2.8	\$5.3	\$5.7	\$6.2
TOTAL	\$140.1	\$138.1	\$152.4	\$165.8	\$182.5

SOURCE: Office of Research Annual Report

INSTITUTE FOR PUBLIC SERVICE PERFORMANCE DATA FY 1998-2002

The Institute for Public Service was created in 1971 “to provide continuing research and technical assistance to state and local government and industry and to meet more adequately the need for information and research in business and government.”

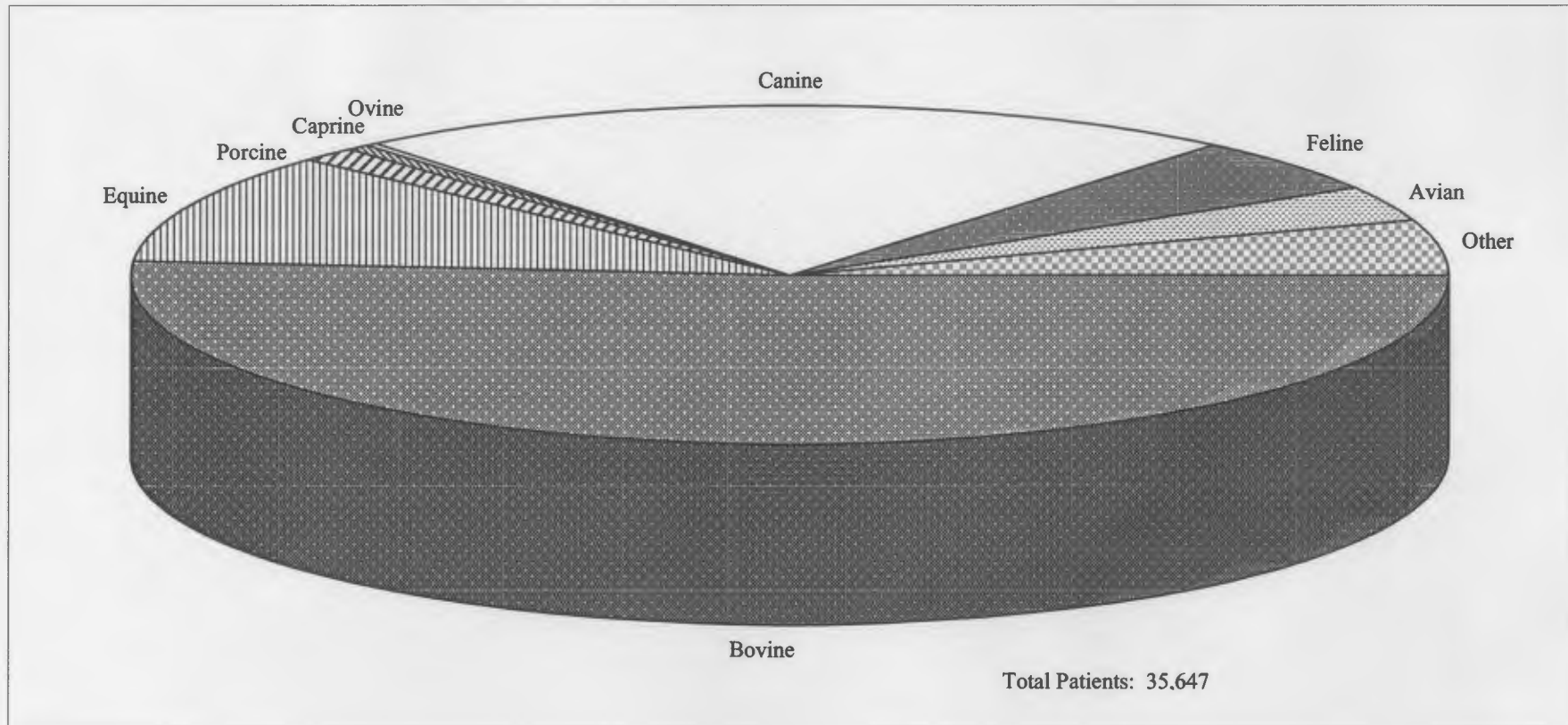
IPS staff professionals provide on-site technical assistance, and training, as well as regional conferences and programs on a variety of issues. The Institute is able to do this by operating offices across the state in Chattanooga, Cookeville, Jackson, Johnson City, Knoxville, Martin, Memphis, and Nashville.



	1997-98	1998-99	1999-00	2000-01	2001-02
Consulting					
Projects	3,768	4,088	2,966	4,340	3,072
Activities	12,162	14,187	16,086	20,153	13,050
Training					
Programs	687	543	587	798	690
Participants	26,758	28,655	15,280	24,471	17,683
Economic Impact					
Jobs Created	2,650	2,760	4,845	5,613	6,433
Revenue Enhancement	\$132,491,402	\$137,981,742	\$242,243,508	\$286,900,201	\$544,268,645
Cost Avoidance	\$32,657,645	\$7,008,188	\$46,400,000	\$55,648,128	\$49,852,358
Total Economic Impact	\$165,149,047	\$144,989,930	\$288,643,508	\$342,548,329	\$594,121,003
Return on Investment					
State Dollars	\$6,192,300	\$6,715,800	\$6,702,600	\$7,042,700	\$7,367,000
Return on Investment (EI/SD)	\$26.67	\$21.59	\$43.06	\$48.64	\$80.65

SOURCE: Institute for Public Service

COLLEGE OF VETERINARY MEDICINE ANALYSIS OF PATIENTS BY SPECIES FY 2001-2002

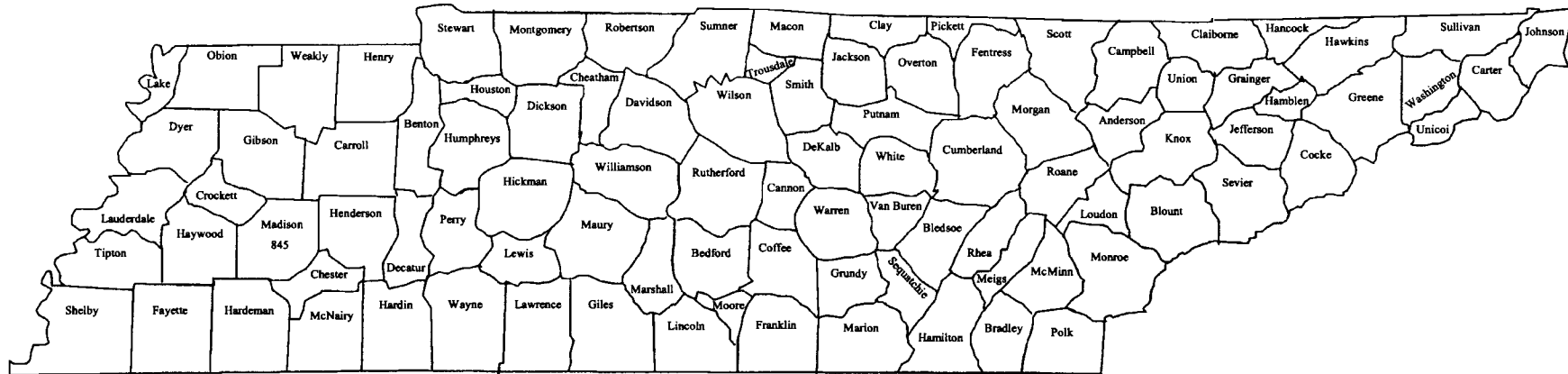


The College of Veterinary Medicine provides important services to the clients/animals/citizens of Tennessee and impact their general well being. Public Service includes providing veterinary practitioners with continuing education programs, caring for injured wild animals or injured abandoned domestic animals and providing veterinarians with diagnostic and consultation services.

Public service also includes educating the public about animals, supporting programs exploring the emotional bond between humans and animals and providing health care for assistance dogs for the hearing or visually impaired, police dogs or other service dogs at cost, and providing emergency medical care during disaster situations.

SOURCE: College of Veterinary Medicine

AGRICULTURAL EXTENSION SERVICE



The Agricultural Extension Service is an off-campus division of the Institute of Agriculture. It is a statewide educational organization, funded by federal, state and local governments, that brings research-based information about agriculture, family and consumer sciences, and resource development to the people of Tennessee where they live and work.

Because Extension emphasizes helping people improve their livelihood where they are located, most Tennesseans have contact with the Agricultural Extension Service through their local county Extension agents found in each of the 95 counties. Extension agents are supported by area and state faculty as well as by the educational and research resources and activities of the United States Department of Agriculture (USDA), 74 land-grant universities, and 3,150 county units throughout the nation. The stated mission of the system is to help people improve their lives through an educational process that uses scientific knowledge to address issues and needs.

Each county office of the Tennessee Agricultural Extension Service is staffed with agents who are college graduates in agriculture and/or family and consumer sciences. These highly trained professionals are able to provide information on a variety of subjects, ranging from landscaping to nutrition, from animal health to family money management. These programs are available to all county residents.

Extension also gives special attention to youth. Challenges facing Tennessee's young people are greater than ever before. Extension's 4-H youth development program helps youth from 9 to 19 develop self-esteem, leadership and citizenship skills, and gain knowledge in a wide range of subjects. From health to public speaking, from wildlife to photography, 4-H brings tomorrow's world to today's youth, and encourages advanced education. Tennessee 4-H clubs have continually produced national winners in project competition, and Tennessee has one of the largest 4-H memberships in the nation.

SOURCE: Agricultural Extension Service