



University of Tennessee, Knoxville
**TRACE: Tennessee Research and Creative
Exchange**

Reports

Office of Research & Engagement

8-2009

Quarterly Report: First, Second, Third & Fourth Quarters of Fiscal Year 2009

University of Tennessee Office of Research

Follow this and additional works at: https://trace.tennessee.edu/utk_researchreports

Recommended Citation

University of Tennessee Office of Research, "Quarterly Report: First, Second, Third & Fourth Quarters of Fiscal Year 2009" (2009). *Reports*.
https://trace.tennessee.edu/utk_researchreports/18

This Report is brought to you for free and open access by the Office of Research & Engagement at TRACE: Tennessee Research and Creative Exchange. It has been accepted for inclusion in Reports by an authorized administrator of TRACE: Tennessee Research and Creative Exchange. For more information, please contact trace@utk.edu.

QUARTERLY REPORT

OFFICE OF RESEARCH—FIRST, SECOND, THIRD & FOURTH QUARTERS OF FISCAL YEAR 2009

SPONSORED PROPOSALS, AWARDS, AND EXPENDITURES

Senior Management Area	Proposals Submitted, FY 09			Awards Received, FY 09			Sponsored Expenditures	
	No.	Amount Requested	% \$ Incr. Over FY 08	No.	Amount Received	% \$ Incr. Over FY 08	Amount Expended	% \$ Incr. Over FY 08
Arts & Sciences	548	\$209,178,681	42%	553	\$36,023,475	42%	\$27,759,463	-3%
Engineering	521	\$218,001,532	57%	550	\$39,797,619	21%	\$31,358,329	-3%
Business Administration	30	\$19,301,381	277%	61	\$20,884,145	733%	\$9,911,435	53%
Law	2	\$145,689	-47%	2	\$145,689	-57%	\$358,619	268%
Architecture & Design	7	\$197,257	91%	3	\$10,000	-68%	\$49,362	-10%
Nursing	22	\$11,163,615	44%	9	\$284,847	155%	\$206,473	-71%
Social Work	43	\$24,698,211	-12%	49	\$9,578,036	124%	\$8,046,705	-2%
Education, Health, & Human Sciences	126	\$42,158,624	63%	113	\$16,593,745	70%	\$15,613,995	7%
Communication & Information	21	\$5,527,732	-22%	21	\$1,087,803	44%	\$1,158,432	-26%
Research Centers	134	\$100,615,760	152%	153	\$46,312,789	459%	\$43,690,075	409%
Other	17	\$1,920,170	-81%	22	\$7,976,566	136%	\$3,077,014	-13%
Total	1,471	\$632,908,652	54%	1,536	\$178,694,714	104%	\$141,229,902	35%

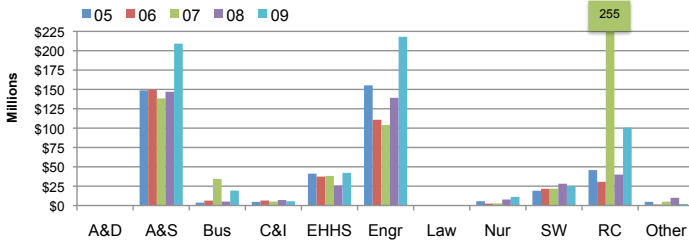
TOP 20 AWARDS

Investigators (Primary PI First)	Departments, Centers, & Institutes	Project Title	Sponsor	Maximum Amount*
Miller, Alex; Riblett, John E.; Barton, Rhonda W.	Center for Executive Education	Continuous Process Improvement in Air Force Acquisition	Air Force	\$16,252,690
Gross, Louis J.	Ecology & Evolutionary Biology	National Institute for Mathematical and Biological Synthesis (NIMBioS)	National Science Foundation	\$16,000,000
Bingham, Carrol R.	Physics	Matching Funds - UT/ORNL Joint Institute	UT-Battelle - ORNL	\$8,426,691
Simek, Jan F.	Office of the Chancellor	FY 2009 State Appropriations for Governor's Chairs	State of Tennessee	\$6,231,000
Dahlin-Brown, Nissa D.	Baker Center for Public Policy	Congressionally-Directed Grant for the Howard H. Baker Jr. Center for Public Policy	U.S. Department of Education - Other Office of Education	\$4,789,834
Poore, Jesse H.	Science Alliance	FY 2009 Centers of Excellence - UTK Science Alliance	State of Tennessee	\$4,032,300
Peterson, Cynthia B.; Hodges, Carolyn R.; Fenwick, Bradley	School of Genome Science & Technology	Program for Excellence and Equity in Research (PEER)	NIH - National Institute of General Medical Sciences	\$3,506,427
Peterson, Cynthia B.; Langston, Michael A.; Dongarra, Jack	Biochemistry, Cellular & Molecular Biology	IGERT for Scalable Computing and Leading Edge Innovative Technologies (SCALE-IT) for Biology	National Science Foundation	\$2,982,348
Keffer, David J.; Rawn, Claudia J.; Khomami, Bamin; Frymier, Paul D.; Bruce, Barry D.	Chemical and Biomolecular Engineering	Igert: Stair - Sustainability Through Advanced Interdisciplinary Research	National Science Foundation	\$2,941,396
Dongarra, Jack	Ctr for Info Tech Rsch	Blackjack	Defense Advance Research Projects Agency	\$2,588,352
Birdwell, John D.; Wang, Tse-Wei	Electrical Engineering & Computer Science	Searchable Database	UNISYS Corporation	\$2,508,592
Campbell, Paul; Cunningham, Maryanne; Cunningham, Mary; Cheatham, Joanna	SWORPS	Child Care Assessment Supportive Services Program	Tennessee Department of Human Services	\$2,270,000
Stuart, Gregory L.	Psychology	Brief Intervention to Reduce Drinking and Intimate Partner Violence in Women	NIH - National Institute on Alcohol Abuse and Alcoholism	\$2,003,109
Miller, Laurence F.; Penumadu, Dayakar; Melcher, Charles L.	Nuclear Engineering	Transformational Scintillation Materials for Neutron and Gamma Detectors and Educ. Integration	National Science Foundation	\$1,998,290
Egami, Takeshi; Smith, Jeremy Christopher; Mays, Jimmy W.	Materials Science & Engineering	Neutron Scattering Research Network for Epscor States	U.S. Department of Energy - Energy and Technology	\$1,980,000
Dongarra, Jack; Moore, Shirley V; Cronk, David C.	Ctr for Info Tech Rsch	Programming and Environment Training II- Computational Environments	Mississippi State University	\$1,864,275
Long, Vena M.	Education, Health & Human Sciences	TDE- Governor's Academy for Math & Science 2009	Tennessee Department of Education	\$1,850,000
Richards, Stephen H.; Flinchum, Deanna L.	Center for Transportation Research	University Transportation Center Program Southeastern Transportation Center Rebid	U.S. Department of Transportation - Research and Innovative Technology	\$1,828,000
Black, Brenda J.; Cunningham, Maryanne; Campbell, Paul	SWORPS	Tennessee Social Work Education Consortium	Middle Tennessee State University	\$1,800,818
Wodarski, John S.	Children's Mental Health Service Research Center	HIV/AIDS and Substance Abuse Primary Prevention in Minority Adolescents	Substance Abuse & Mental Health Services Adm (SAMSA)	\$1,676,665

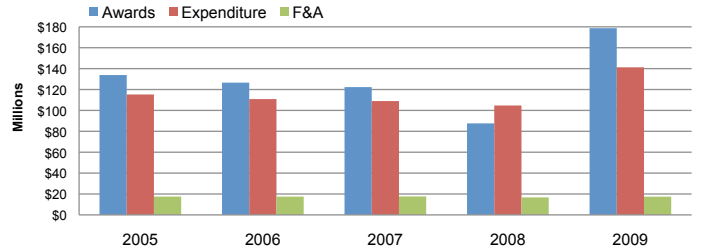
*Anticipated Amount

**THE UNIVERSITY OF TENNESSEE, KNOXVILLE—OFFICE OF RESEARCH
 QUARTERLY REPORT FOR THE FIRST, SECOND, THIRD & FOURTH QUARTERS OF FISCAL YEAR 2009**

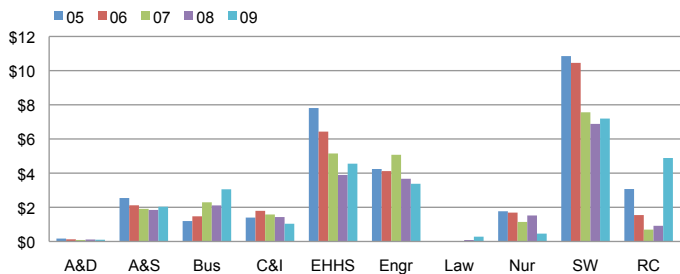
PROPOSAL AMOUNT REQUESTED



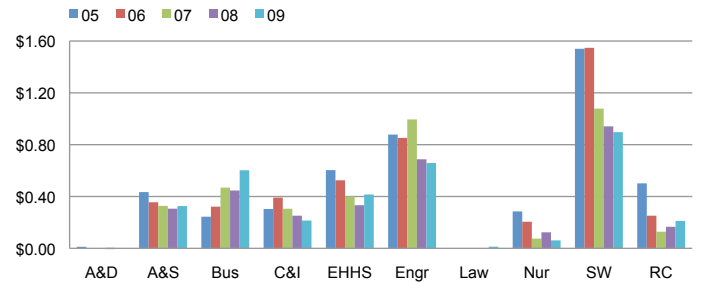
CAMPUS TOTAL DOLLAR AMOUNT



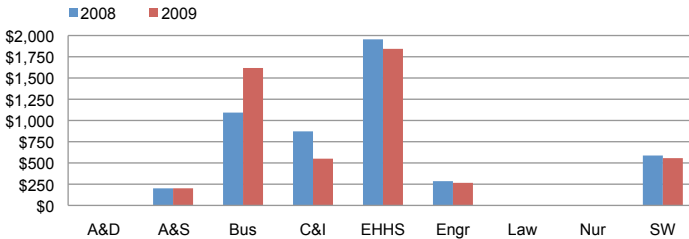
SPONSORED EXPENDITURES PER DOLLAR



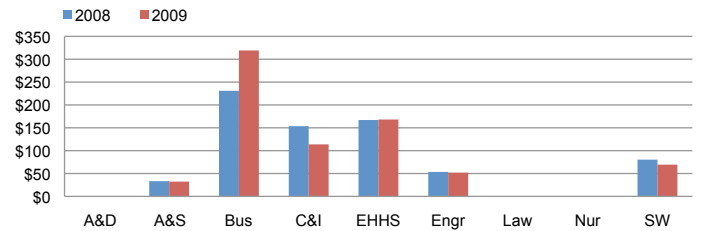
F&A EARNED PER DOLLAR



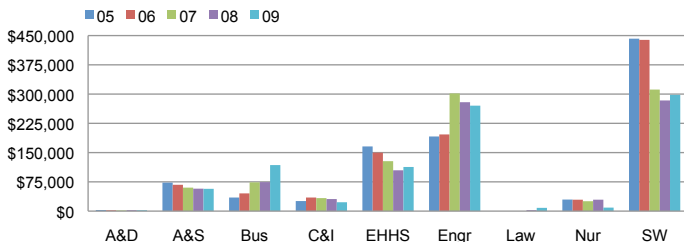
SPONSORED EXPENDITURES PER SQUARE FOOT



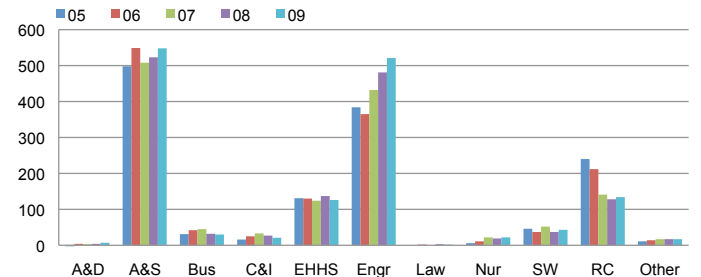
OVERHEAD GENERATED PER SQUARE FOOT



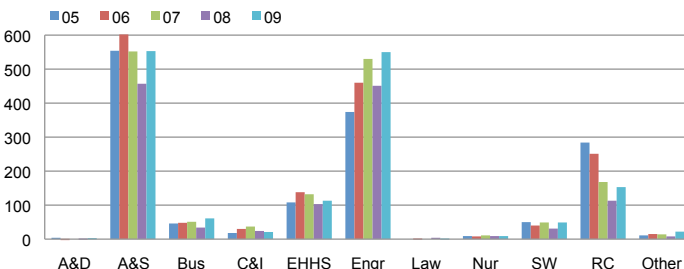
SPONSORED EXPENDITURES PER STATE-SUPPORTED FACULTY



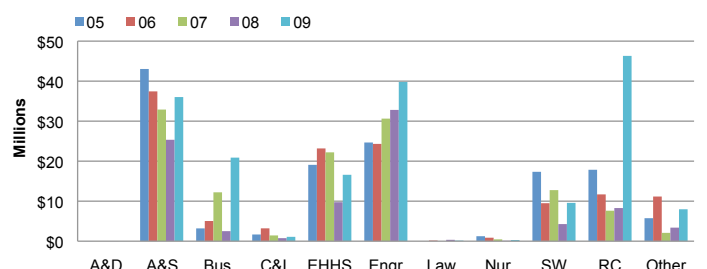
NUMBER OF PROPOSALS SUBMITTED



AWARD COUNTS BY COLLEGE



AWARD AMOUNTS BY COLLEGE



HOW QUARTERLY REPORT DATA ARE DERIVED

Quarterly reports are year-to-date comparisons. For example, the first quarter report is comprised of data for the first three months of each fiscal year presented while the second quarter report contains data for the first six months of each fiscal year, and so forth.

Data depicting colleges and major research centers are presented to show trends within each unit.

Proposal and award data are recorded in Coeus by the Office of Research.

Expenditure, F&A, University support, and faculty count data are taken from IRIS.

For more detailed information about the origins of this data, visit <http://research.utk.edu/reports>