



11-2007

SP606-T From the Garden

The University of Tennessee Agricultural Extension Service

Follow this and additional works at: http://trace.tennessee.edu/utk_agexfood

Recommended Citation

"SP606-T From the Garden," The University of Tennessee Agricultural Extension Service, 08-0083 SP606-T-11/07,
http://trace.tennessee.edu/utk_agexfood/37

The publications in this collection represent the historical publishing record of the UT Agricultural Experiment Station and do not necessarily reflect current scientific knowledge or recommendations. Current information about UT Ag Research can be found at the [UT Ag Research website](#).

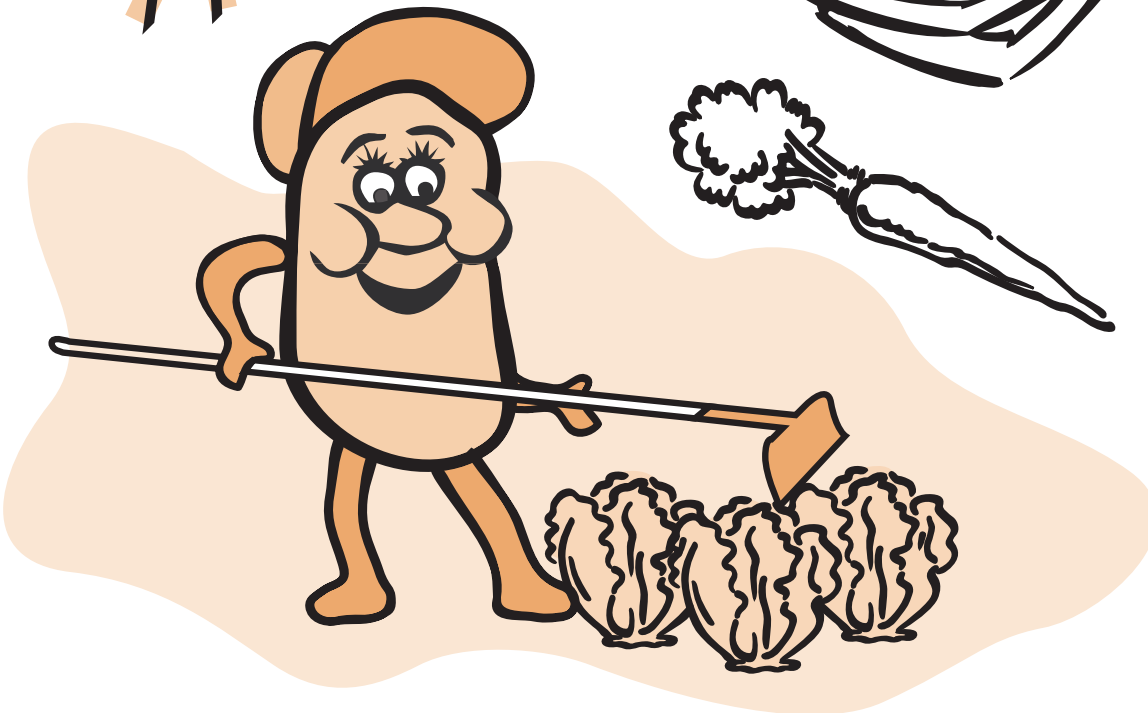
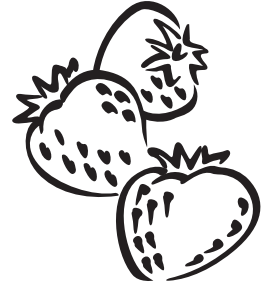
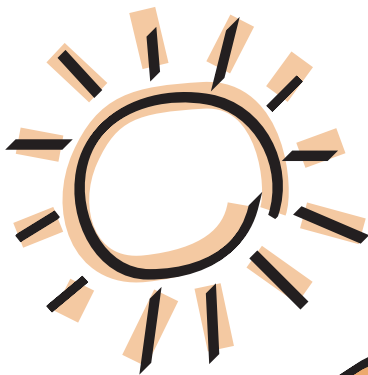
This Food & Cooking - Food/Nutrition Publications for Children is brought to you for free and open access by the UT Extension Publications at Trace: Tennessee Research and Creative Exchange. It has been accepted for inclusion in Food, Nutrition and Food Safety by an authorized administrator of Trace: Tennessee Research and Creative Exchange. For more information, please contact trace@utk.edu.

From the Garden

Which Foods Grow in Miss Potato's Garden?

Janie Burney, Professor
Family and Consumer Sciences

Directions: Circle the pictures of food that grows in a garden.
Color the pictures.



Visit the UT Extension Web Site at: <http://www.utextension.utk.edu/>

Funding provided by Tennessee Nutrition and Consumer Education Program in Partnership with the Tennessee Department of Human Services and the USDA Food Stamp program.
The Food Stamp Program provides nutrition assistance to people with low income. It can help you buy nutritious foods for a better diet.
08-0083 SP606-T-11/07



Programs in agriculture and natural resources, 4-H youth development, family and consumer sciences, and resource development.
University of Tennessee Institute of Agriculture, U.S. Department of Agriculture and county governments cooperating.
UT Extension provides equal opportunities in programs and employment.

Answer:
Strawberries,
Tomato, Carrot