



2013

Quarterly Report: First Quarter of Fiscal Year 2013

University of Tennessee Office of Research

Follow this and additional works at: http://trace.tennessee.edu/utk_researchreports

Recommended Citation

University of Tennessee Office of Research, "Quarterly Report: First Quarter of Fiscal Year 2013" (2013). *Reports*.
http://trace.tennessee.edu/utk_researchreports/20

This Report is brought to you for free and open access by the Office of Research at Trace: Tennessee Research and Creative Exchange. It has been accepted for inclusion in Reports by an authorized administrator of Trace: Tennessee Research and Creative Exchange. For more information, please contact trace@utk.edu.

QUARTERLY REPORT

OFFICE OF RESEARCH—FIRST QUARTER OF FISCAL YEAR 2013

SPONSORED PROPOSALS, AWARDS, AND EXPENDITURES

Senior Management Area	Proposals Submitted, FY 13			Awards Received, FY 13			Sponsored Expenditures	
	No.	Amount Requested	% \$ Incr. Over FY 12	No.	Amount Received	% \$ Incr. Over FY 12	Amount Expended	% \$ Incr. Over FY 12
Architecture & Design	1	\$62,350	-98.1%	1	\$48,976	100.0%	-\$5,260	-111.5%
Arts & Sciences	129	\$30,044,731	-6.1%	130	\$14,935,659	-14.7%	\$7,838,487	4.2%
Business Administration	14	\$2,890,773	143.7%	9	\$2,363,493	-7.6%	\$2,733,268	9.4%
Communication & Information	7	\$1,095,213	2.7%	4	\$362,441	-5.0%	\$602,375	-0.9%
Education, Health, & Human Sciences	24	\$9,845,838	-35.6%	11	\$1,880,153	-66.7%	\$4,218,360	-8.4%
Engineering	156	\$43,159,966	17.1%	151	\$18,442,352	-4.2%	\$13,051,592	10.4%
Law	1	\$7,258	100.0%	0	\$0	0.0%	\$10,539	100.0%
Nursing	7	\$756,641	71.5%	2	\$22,432	-96.6%	\$135,281	5.1%
Social Work	5	\$137,753	-37.7%	10	\$1,953,441	-65.1%	\$1,396,417	-12.5%
Research Centers & Institutes	52	\$24,422,607	232.8%	38	\$7,346,909	-58.0%	\$5,300,301	-17.1%
Other	7	\$3,314,166	11.8%	11	\$1,199,614	124.3%	\$2,152,283	0.2%
Total	403	\$115,737,296	15.0%	367	\$48,555,469	-30.3%	\$37,433,643	0.2%

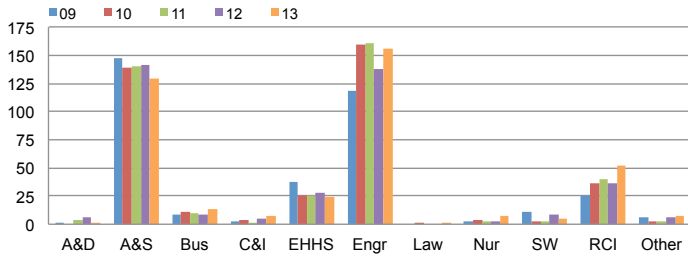
TOP 20 AWARDS

Investigators (Primary PI First)	Departments, Centers, & Institutes	Project Title	Sponsor	Amount*
Brewer, Ernest	Pre-College Enrichment Program	Upward Bound [Pre-College] - Revision 1	US Department of Education	\$1,933,160
Brewer, Ernest	Educational Leadership & Policy Studies	Academic Enrichment Upward Bound	US Department of Education	\$1,738,440
Hazen, Terry	Civil & Environmental Engineering	Deep Sea Basin Microbiology	BP America	\$1,320,000
Nazarewicz, Witold; Papenbrock, Thomas	Physics	Nuclear Computational Low Energy Initiative (NUCLEI)	US Department of Energy - Office of Science	\$1,050,000
Qi, Hairong; Cao, Qing Charles; Liu, Yilu; Tolbert, Leon	Electrical Engineering & Computer Science	CPS: Synergy: Achieving High-Resolution Situational Awareness in Ultra-Wide-Area	National Science Foundation	\$1,000,000
Greene, Geoffrey	Physics	Experimental Weak Interactions with Pulsed and Continuous Cold Neutrons	US Department of Energy	\$900,000
Tomsovic, Kevin; Djouadi, Seddik; Li, Husheng	Center for Electric Power	CPS: Synergy: A Cyber Physical Framework for Remedial Action Schemes	National Science Foundation	\$750,000
Larese, John	Chemistry	Pulsed Neutron Imaging and Diffraction Study of CdZnTe Materials	National Nuclear Security Administration	\$749,512
Mulligan, Geraldine	Center for Literacy Studies	Adult Education Professional Development and Technical Assistance	TN Department of Labor and Workforce Development	\$681,445
Wirth, Brian; Maingi, Rajesh	Nuclear Engineering	Diagnostics and Modeling in Support of Boundary Physics Research on NSTX Upgrade	US Department of Energy - Office of Science	\$675,000
Hauck, Cory; Mezzacappa, Anthony	Mathematics	Optimization-Based Moment Models for Multiscale Kinetic Equations	National Science Foundation	\$635,680
Campagna, Shawn; Zinser, Erik	Chemistry	Intracellular DOM: Fate and Flux at the Microbial Nodes of C and N Cycles	National Science Foundation	\$600,000
Mays, Jimmy; Fisher, Joy; Miller, Alex	Chemistry	PFI-BIC: Superelastomers: New Thermoplastic Elastomers Based on Multigraft Copolymers	National Science Foundation	\$599,999
Nazarewicz, Witold	Physics	Microscopic Description of the Fission Process	National Nuclear Security Administration	\$594,000
Wilhelm, Steven	Microbiology	Dimensions: Collaborative Research: Anthropogenic Nutrient Input Drives Genetic	National Science Foundation	\$563,036
Gross, Louis	Ecology & Evolutionary Biology	UT-Battelle EPA Risk - Environment Assessment and Decision Analysis	DOE - UT-Battelle - ORNL	\$521,052
Zawodzinski, T.; Foister, S.; Mench, M.; Paddison, S.; Papandrew, A.	Chemical & Biomolecular Engineering	Research Support for Naval Energy Needs	Office of Naval Research	\$500,000
Musfeldt, Janice	Chemistry	Spectroscopic Investigations of Complex Magnetic and Electronic Materials	US Department of Energy	\$476,367
Smith, Steven	Library	UT/ORNL Library Project	DOE - UT-Battelle - ORNL	\$450,000
Townsend, Lawrence	Nuclear Engineering	Additional Improvements to the HZETRN Code and the NUCFRG2 Database	NASA - Langley Research Center	\$449,002

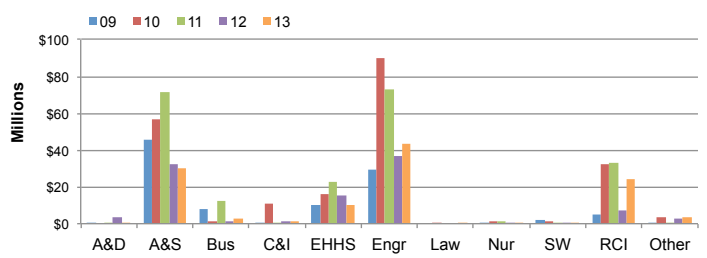
*Anticipated Maximum

THE UNIVERSITY OF TENNESSEE, KNOXVILLE—OFFICE OF RESEARCH QUARTERLY REPORT FOR FIRST QUARTER OF FISCAL YEAR 2013

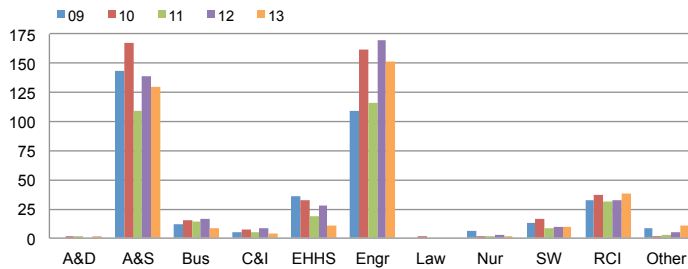
NUMBER OF PROPOSALS SUBMITTED



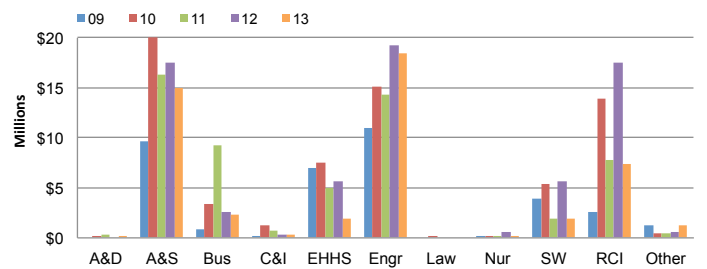
PROPOSAL AMOUNT REQUESTED



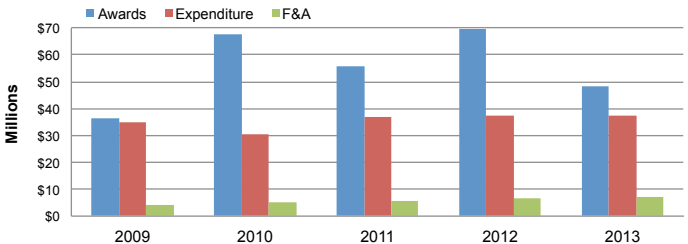
AWARD COUNTS BY COLLEGE



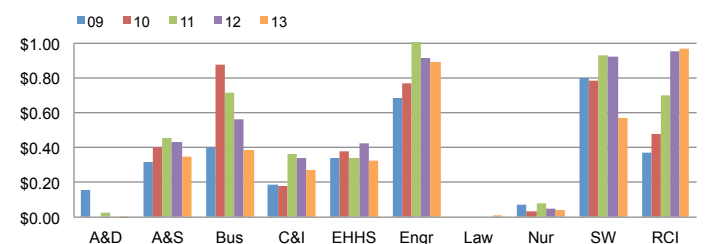
AWARD AMOUNTS BY COLLEGE



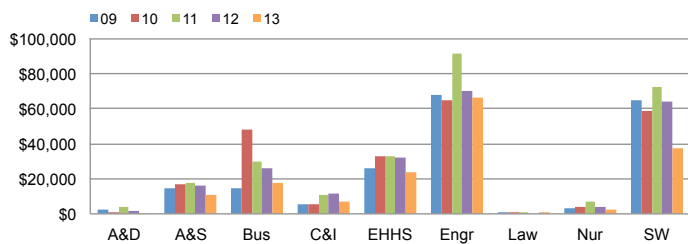
CAMPUS TOTAL DOLLAR AMOUNT



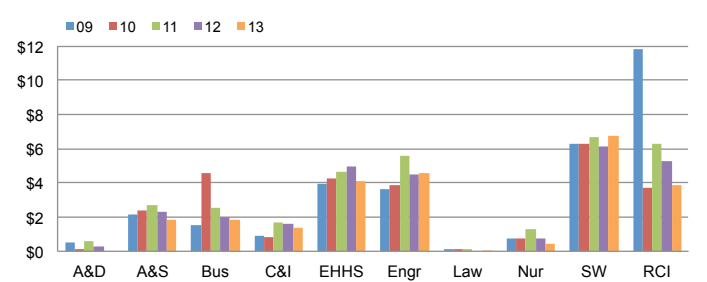
F&A EARNED PER DOLLAR INVESTED



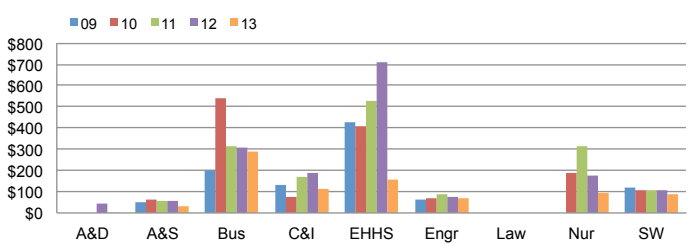
SPONSORED EXPENDITURES PER STATE-SUPPORTED FACULTY



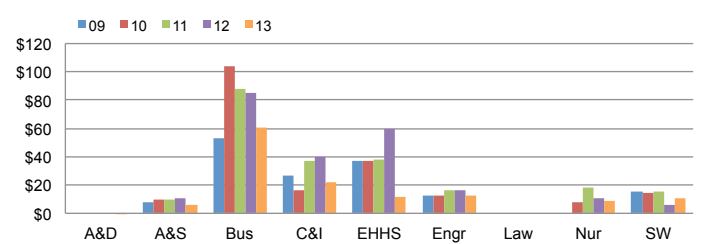
SPONSORED EXPENDITURES PER DOLLAR INVESTED



SPONSORED EXPENDITURES PER SQUARE FOOT



OVERHEAD GENERATED PER SQUARE FOOT



HOW QUARTERLY REPORT DATA ARE DERIVED

Quarterly reports are year-to-date comparisons. For example, the first quarter report is composed of data for the first three months of each fiscal year presented while the second quarter report contains data for the first six months of each fiscal year, and so forth.

Data depicting colleges and major research centers are presented to show trends within each unit.

Proposal and award data are recorded in TERA by the Office of Research.

Expenditure, F&A, University support, and faculty count data are taken from IRIS.

For more detailed information about the origins of this data, visit <http://research.utk.edu/reports>