



9-2012

Quarterly Report: First, Second, Third & Fourth Quarters of Fiscal Year 2012

University of Tennessee Office of Research

Follow this and additional works at: http://trace.tennessee.edu/utk_researchreports

Recommended Citation

University of Tennessee Office of Research, "Quarterly Report: First, Second, Third & Fourth Quarters of Fiscal Year 2012" (2012).
Reports.
http://trace.tennessee.edu/utk_researchreports/8

This Report is brought to you for free and open access by the Office of Research & Engagement at Trace: Tennessee Research and Creative Exchange. It has been accepted for inclusion in Reports by an authorized administrator of Trace: Tennessee Research and Creative Exchange. For more information, please contact trace@utk.edu.

QUARTERLY REPORT

OFFICE OF RESEARCH—FIRST, SECOND, THIRD, AND FOURTH QUARTERS OF FISCAL YEAR 2012

SPONSORED PROPOSALS, AWARDS, AND EXPENDITURES

Senior Management Area	Proposals Submitted, FY 12			Awards Received, FY 12			Sponsored Expenditures	
	No.	Amount Requested	% \$ Incr. Over FY 11	No.	Amount Received	% \$ Incr. Over FY 11	Amount Expended	% \$ Incr. Over FY 11
Architecture & Design	13	\$3,765,189	342%	5	\$170,626	-59%	\$464,145	32%
Arts & Sciences	498	\$131,052,312	-10%	481	\$39,425,653	-5%	\$32,033,891	2%
Business Administration	27	\$14,691,629	-37%	40	\$8,940,147	-63%	\$11,997,006	-21%
Communication & Information	32	\$6,426,198	117%	32	\$2,969,231	45%	\$2,571,803	10%
Education, Health, & Human Sciences	115	\$64,758,737	8%	82	\$20,857,561	32%	\$15,313,845	-7%
Engineering	595	\$203,778,628	-21%	500	\$45,730,926	8%	\$45,900,406	1%
Law	1	\$25,402	100%	1	\$25,402	100%	\$12,640	1,854%
Nursing	19	\$8,509,378	1%	8	\$1,449,703	1,301%	\$632,471	76%
Social Work	47	\$14,405,195	7%	39	\$12,057,269	108%	\$7,320,066	-13%
Research Centers & Institutes	173	\$99,826,641	-1%	126	\$33,989,499	64%	\$27,861,914	4%
Other	30	\$3,801,434	-13%	24	\$1,194,882	4%	\$7,175,310	4%
Total	1,550	\$551,040,743	-11%	1,338	\$166,810,898	8%	\$151,283,497	-2%

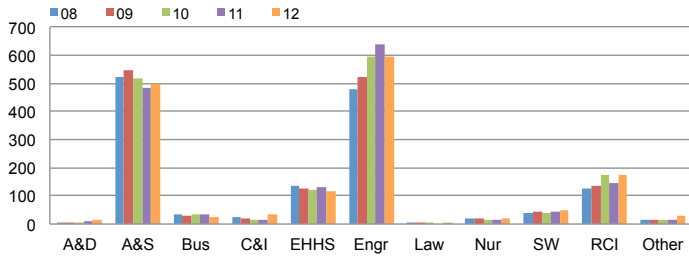
TOP 20 AWARDS

Investigators (Primary PI First)	Departments, Centers, & Institutes	Project Title	Sponsor	Amount*
Tomsovic, Kevin; Li, Fangxing; Liu, Yilu; Tolbert, Leon; Wang, Fei	Electrical Engineering & Computer Science	ERC for Ultra-Wide Area Resilient Electric Energy Transmission Network	National Science Foundation	\$18,500,000
Kovatch, Patricia; Zacharia, Thomas	Joint Institute for Computational Sciences	XSEDE: eXtreme Science and Engineering Discovery Environment	University of Illinois	\$17,951,009
Zacharia, Thomas	Joint Institute for Computational Sciences	High Performance Computing System Acquisition: Towards a Petascale Computing Environment	National Science Foundation	\$13,222,883
White, Connie	Center for Literacy Studies	Tennessee Reading First Professional Development and Data Support	TN Dept. of Education - Head Start Collaboration Office	\$5,105,484
Campbell, Paul; Cunningham, Maryanne	Social Work Office of Research & Public Service	MTSU Tennessee Center for Child Welfare FY 2012	Middle Tennessee State University	\$4,297,983
Cole, Gregory	Institute for a Secure and Sustainable Environment	GLORIAD in Africa	U.S. Agency for International Development	\$3,500,000
Grzywacz, R.; Bingham, C.; Grzywacz-Jones, K.; Riedinger, L.	Physics	Nuclear Spectroscopy Studies with Radioactive and Stable Ion Beams	U.S. Department of Energy	\$2,865,000
Sorensen, Soren; Read, Kenneth	Physics	Studies of Hot and Dense Nuclear Matter	U.S. Department of Energy	\$2,339,000
Brewer, Ernest	Educational Leadership & Policy Studies	Educational Opportunity Center	U.S. Department of Education	\$2,258,265
Rawn, C.; Bennett, R.; Keppens, V.; Pionke, C.; Russell, M.	Materials Science & Engineering	Research and Instructional Strategies for Engineering Retention - RISER	National Science Foundation	\$2,000,000
Egami, T.; Hopkins, J.; Mays, J.; Smith, J.; Sokolov, A.	Materials Science & Engineering	Neutron Scattering Research Network for EPSCoR States	U.S. Department of Energy	\$1,666,300
Mulligan, Geraldine	Center on Disability & Employment	DRS/CIETAT	TN Department of Human Services	\$1,594,372
Loeffler, Frank; Ritalahti, Kirsti	Microbiology	Towards Predictive Understanding of Nitrogen Flux in Soils	U.S. Department of Energy	\$1,464,920
Campbell, P.; Cheatham, J.; Cunningham, M.	Social Work Office of Research & Public Service	Child Care Research and Evaluation FY12 (STARS)	TN Department of Human Services	\$1,304,129
Podar, Mircea	Microbiology	From Genomes to Metabolomes: Understanding Mechanisms of Symbiosis	U.S. Department of Energy - Office of Science	\$1,263,673
Everett, Jerry	Center for Transportation Research	Law Enforcement Liaison Administration Program	TN Department of Transportation	\$1,235,519
Hillyer, Sarah; Huffman, Ashleigh	Kinesiology Recreation & Sport Studies	Mission Possible: Empowering Women and Girls through Sport	U.S. Department of State	\$1,203,000
Riechert, Susan; Benner, Susan	Center for Enhancing Education in Math & Sciences	VolTeach Noyce Scholarship & Internship Program	National Science Foundation	\$1,196,592
Wolbers, K.; Cihak, D.; Dostal, H.; McGill-Franzen, A.; Stephenson, B.	Center on Deafness	Development of Strategic and Interactive Writing Instruction (SIWI) for Deaf	Institute of Education Sciences	\$1,156,576
Campbell, P.; Cheatham, J.; Cunningham, M.	Social Work Office of Research & Public Service	Child Care Assessment Supportive Services Program (STARS) FY13	Tennessee Department of Human Services	\$1,150,000

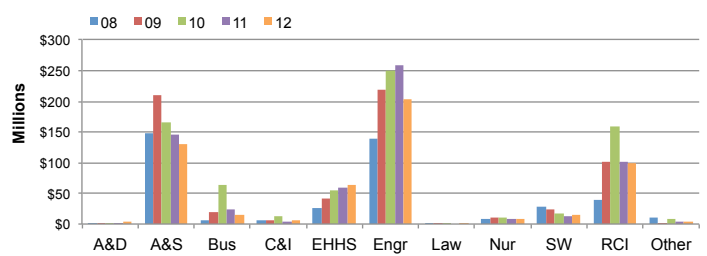
*Anticipated Maximum

**THE UNIVERSITY OF TENNESSEE, KNOXVILLE—OFFICE OF RESEARCH
 QUARTERLY REPORT FOR FIRST, SECOND, THIRD, AND FOURTH QUARTERS OF FISCAL YEAR 2012**

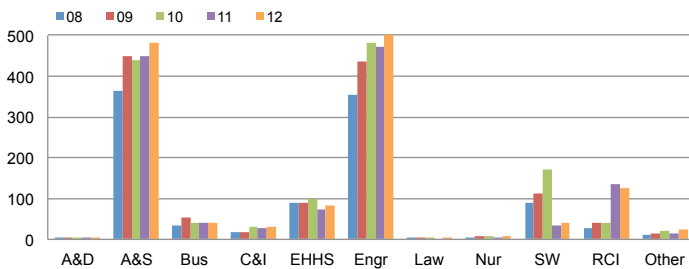
NUMBER OF PROPOSALS SUBMITTED



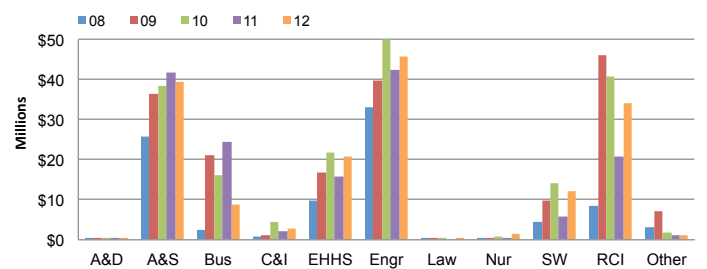
PROPOSAL AMOUNT REQUESTED



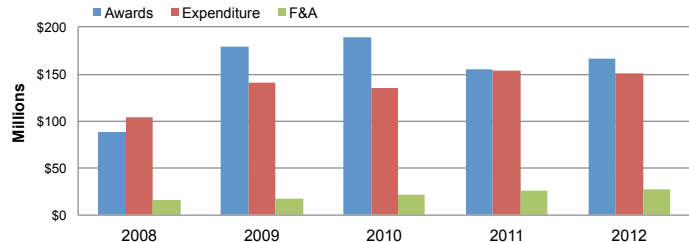
AWARD COUNTS BY COLLEGE



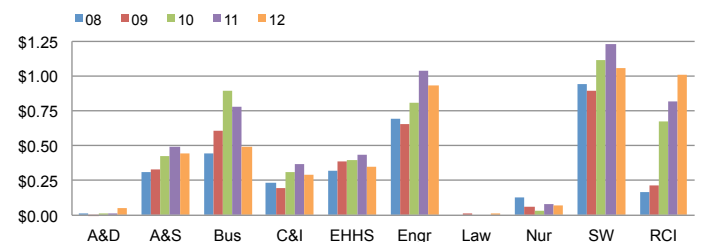
AWARD AMOUNTS BY COLLEGE



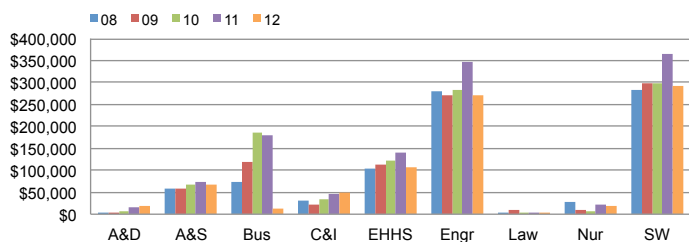
CAMPUS TOTAL DOLLAR AMOUNT



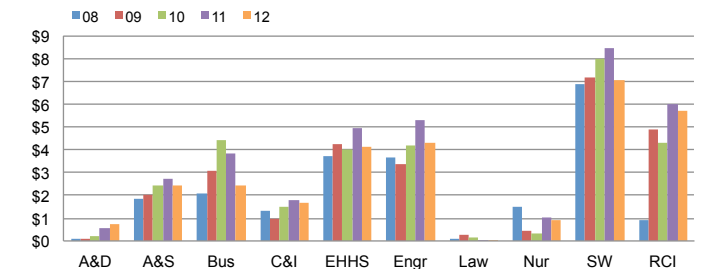
F&A EARNED PER DOLLAR INVESTED



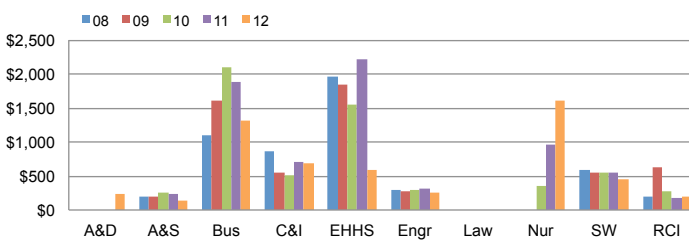
SPONSORED EXPENDITURES PER STATE-SUPPORTED FACULTY



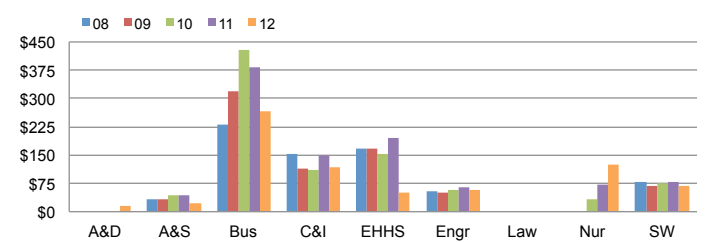
SPONSORED EXPENDITURES PER DOLLAR INVESTED



SPONSORED EXPENDITURES PER SQUARE FOOT



OVERHEAD GENERATED PER SQUARE FOOT



HOW QUARTERLY REPORT DATA ARE DERIVED

Quarterly reports are year-to-date comparisons. For example, the first quarter report is composed of data for the first three months of each fiscal year presented while the second quarter report contains data for the first six months of each fiscal year, and so forth.

Data depicting colleges and major research centers are presented to show trends within each unit.

Proposal and award data are recorded in TERA by the Office of Research.

Expenditure, F&A, University support, and faculty count data are taken from IRIS.

For more detailed information about the origins of this data, visit <http://research.utk.edu/reports>