



1-2012

Quarterly Report: First & Second Quarters of Fiscal Year 2012

University of Tennessee Office of Research

Follow this and additional works at: http://trace.tennessee.edu/utk_researchreports

Recommended Citation

University of Tennessee Office of Research, "Quarterly Report: First & Second Quarters of Fiscal Year 2012" (2012). *Reports*.
http://trace.tennessee.edu/utk_researchreports/10

This Report is brought to you for free and open access by the Office of Research & Engagement at Trace: Tennessee Research and Creative Exchange. It has been accepted for inclusion in Reports by an authorized administrator of Trace: Tennessee Research and Creative Exchange. For more information, please contact trace@utk.edu.

QUARTERLY REPORT

OFFICE OF RESEARCH—FIRST AND SECOND QUARTERS OF FISCAL YEAR 2012

SPONSORED PROPOSALS, AWARDS, AND EXPENDITURES

Senior Management Area	Proposals Submitted, FY 12			Awards Received, FY 12			Sponsored Expenditures	
	No.	Amount Requested	% \$ Incr. Over FY 11	No.	Amount Received	% \$ Incr. Over FY 11	Amount Expended	% \$ Incr. Over FY 11
Architecture & Design	10	\$3,616,955	591%	1	\$20,000	-92%	\$261,873	778%
Arts & Sciences	278	\$58,205,626	-43%	231	\$21,690,486	3%	\$14,398,931	2%
Business Administration	14	\$12,057,833	-43%	21	\$5,194,407	-60%	\$4,665,556	-35%
Communication & Information	14	\$3,472,482	176%	15	\$1,162,153	1,080%	\$1,266,114	25%
Education, Health, & Human Sciences	55	\$22,511,869	-14%	50	\$9,651,166	20%	\$7,300,783	-1%
Engineering	289	\$86,521,053	-46%	247	\$25,356,556	7%	\$21,425,956	-2%
Law	0	\$0	0%	0	\$0	0%	\$0	-100%
Nursing	3	\$2,112,038	6%	3	\$651,166	2,199%	\$239,737	32%
Social Work	12	\$394,263	18%	22	\$7,448,284	209%	\$3,341,402	-12%
Research Centers & Institutes	75	\$12,697,946	-64%	59	\$19,627,806	124%	\$12,903,583	10%
Other	20	\$4,261,168	448%	12	\$807,323	52%	\$4,009,491	37%
Total	770	\$205,851,233	-41%	661	\$91,609,347	18%	\$69,813,426	-1%

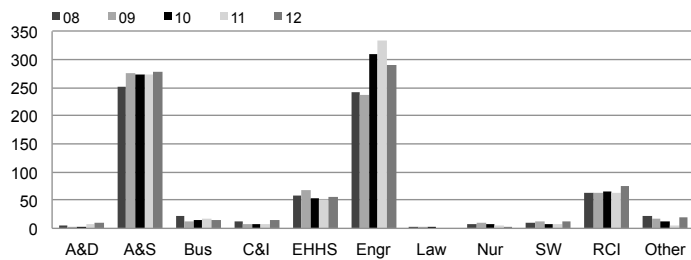
TOP 20 AWARDS

Investigators (Primary PI First)	Departments, Centers, & Institutes	Project Title	Sponsor	Amount*
Tomsovic, Kevin; Li, Fangxing; Liu, Yilu; Tolbert, Leon; Wang, Fei	Electrical Engineering & Computer Science	ERC for Ultra-Wide Area Resilient Electric Energy Transmission Network	National Science Foundation	\$18,500,000
Kovatch, Patricia; Zacharia, Thomas	Joint Institute for Computational Sciences	XSEDE: eXtreme Science and Engineering Discovery Environment	University of Illinois	\$17,951,009
Zacharia, Thomas	Joint Institute for Computational Sciences	High Performance Computing System Acquisition: Towards a Petascale Computing Environment	National Science Foundation	\$6,497,365
Campbell, Paul; Cunningham, Maryanne	Social Work Office of Research & Public Service	MTSU Tennessee Center for Child Welfare FY 2012	Middle Tennessee State University	\$4,297,983
Cole, Gregory	Institute for a Secure and Sustainable Environment	GLORIAD in Africa	US AID - Higher Education for Development (HED)	\$3,500,000
Brewer, Ernest	Educational Leadership & Policy Studies	Educational Opportunity Center	U.S. Department of Education	\$2,258,265
Rawn, Claudia; Bennett, Richard; Keppens, Veerle; Pionke, Christopher; Russell, Margaret	Materials Science & Engineering	Research and Instructional Strategies for Engineering Retention - RISER	National Science Foundation	\$2,000,000
Loeffler, Frank; Ritalahti, Kirsti	Microbiology	Towards Predictive Understanding of Nitrogen Flux in Soils	U.S. Department of Energy	\$1,464,920
Grzywacz, Robert; Bingham, Carrol; Grzywacz-Jones, Katherine; Riedinger, Leo	Physics	Nuclear Spectroscopy Studies with Radioactive and Stable Ion Beams	U.S. Department of Energy	\$1,305,000
Campbell, Paul; Cheatham, Joanna; Cunningham, Maryanne	Social Work Office of Research & Public Service	Child Care Research and Evaluation FY12 (STARS)	Tennessee Department of Human Services	\$1,304,129
Podar, Mircea	Microbiology	From Genomes to Metabolomes: Understanding Mechanisms of Symbiosis	U.S. Department of Energy - Office of Science	\$1,263,673
Riechert, Susan; Benner, Susan	Center for Enhancing Education in Math & Sciences	VolsTeach Noyce Scholarship & Internship Program	National Science Foundation	\$1,196,592
Ponder, Beth	Center For Literacy Studies	LINCS Regional Professional Development Centers Program	U.S. Department of Education	\$1,137,045
Moore, Shirley; Bosilca, George; Dongarra, Jack; Terpstra, Daniel	Electrical Engineering & Computer Science	Institute for Sustained Performance, Energy, and Resilience (SuPER)	U.S. Department of Energy - Office of Science	\$1,075,000
Sorensen, Soren; Read, Kenneth	Physics	Studies of Hot and Dense Nuclear Matter	U.S. Department of Energy	\$1,070,000
Mazur, Peter	Biochemistry and Cellular and Molecular Biology	Aquaporins, Ice Formation in Cells, and Cryopreservation	DHHS - NIH - National Center for Research Resources	\$1,029,153
Kolvitz, Marcia	Center On Deafness	Postsecondary Education Center for Individuals Who are Deaf	California State University Northridge	\$973,489
Wirth, Brian	Nuclear Engineering	A Multiscale Investigation of the Mechanisms Controlling Materials Degradation	U.S. Department of Energy - Office of Science	\$942,090
Wirth, Brian	Nuclear Engineering	Plasma Science Center: Bridging the PSI Knowledge Gap through Multiscale Materials	University of California - Berkeley	\$900,000
Hines, J.; Upadhyaya, Belle	Nuclear Engineering	Development and Validation of a Lifecycle-based Prognostics Architecture	U.S. Department of Energy	\$846,315

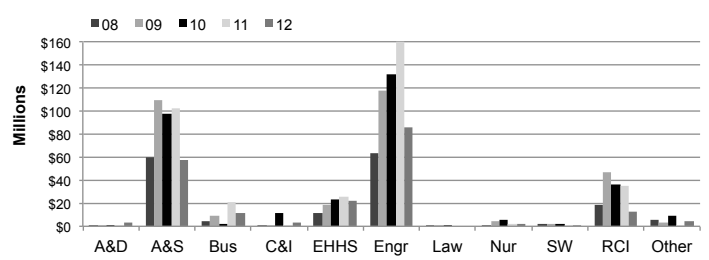
*Anticipated Maximum

THE UNIVERSITY OF TENNESSEE, KNOXVILLE—OFFICE OF RESEARCH QUARTERLY REPORT FOR FIRST AND SECOND QUARTERS OF FISCAL YEAR 2012

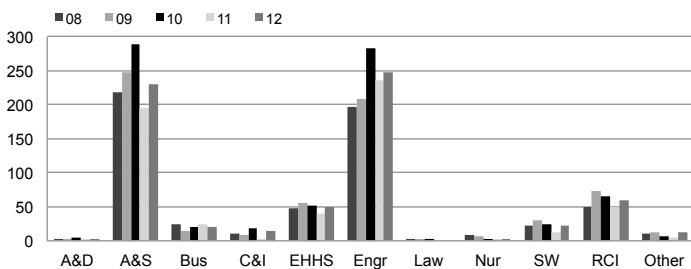
NUMBER OF PROPOSALS SUBMITTED



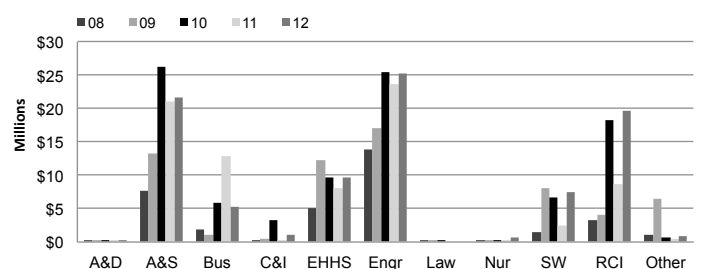
PROPOSAL AMOUNT REQUESTED



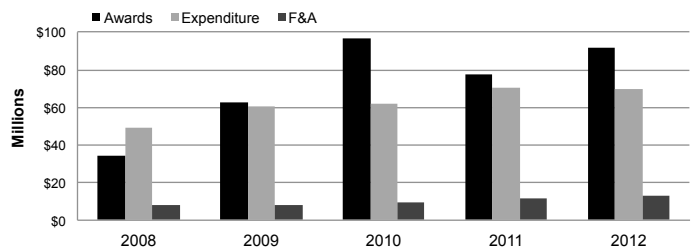
AWARD COUNTS BY COLLEGE



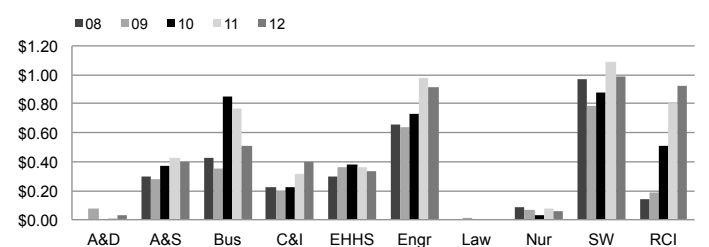
AWARD AMOUNTS BY COLLEGE



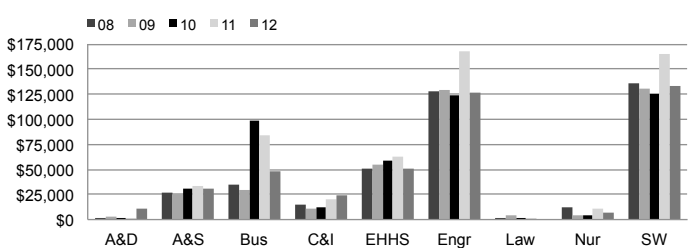
CAMPUS TOTAL DOLLAR AMOUNT



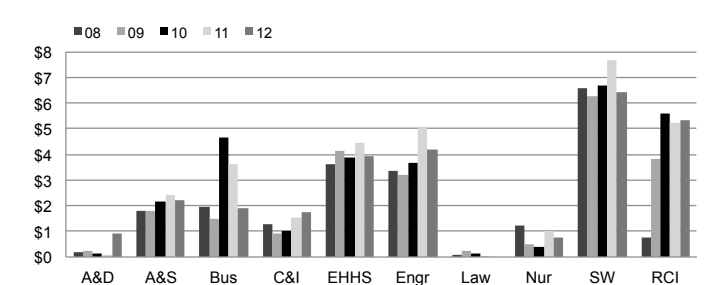
F&A EARNED PER DOLLAR INVESTED



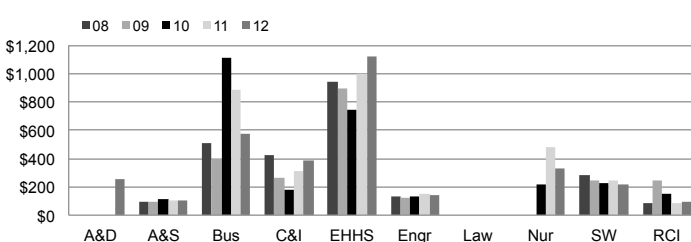
SPONSORED EXPENDITURES PER STATE-SUPPORTED FACULTY



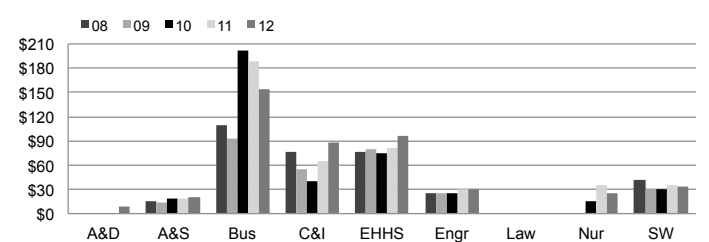
SPONSORED EXPENDITURES PER DOLLAR INVESTED



SPONSORED EXPENDITURES PER SQUARE FOOT



OVERHEAD GENERATED PER SQUARE FOOT



HOW QUARTERLY REPORT DATA ARE DERIVED

Quarterly reports are year-to-date comparisons. For example, the first quarter report is composed of data for the first three months of each fiscal year presented while the second quarter report contains data for the first six months of each fiscal year, and so forth.

Data depicting colleges and major research centers are presented to show trends within each unit.

Proposal and award data are recorded in TERA by the Office of Research.

Expenditure, F&A, University support, and faculty count data are taken from IRIS.

For more detailed information about the origins of this data, visit <http://research.utk.edu/reports>