



8-2011

# Quarterly Report: First, Second, Third & Fourth Quarters of Fiscal Year 2011

University of Tennessee Office of Research

Follow this and additional works at: [http://trace.tennessee.edu/utk\\_researchreports](http://trace.tennessee.edu/utk_researchreports)

---

## Recommended Citation

University of Tennessee Office of Research, "Quarterly Report: First, Second, Third & Fourth Quarters of Fiscal Year 2011" (2011).  
*Reports*.  
[http://trace.tennessee.edu/utk\\_researchreports/12](http://trace.tennessee.edu/utk_researchreports/12)

This Report is brought to you for free and open access by the Office of Research at Trace: Tennessee Research and Creative Exchange. It has been accepted for inclusion in Reports by an authorized administrator of Trace: Tennessee Research and Creative Exchange. For more information, please contact [trace@utk.edu](mailto:trace@utk.edu).

## QUARTERLY REPORT

OFFICE OF RESEARCH—FIRST, SECOND, THIRD AND FOURTH QUARTERS OF FISCAL YEAR 2011

### SPONSORED PROPOSALS, AWARDS, AND EXPENDITURES

Senior Management Area	Proposals Submitted, FY 11			Awards Received, FY 11			Sponsored Expenditures	
	No.	Amount Requested	% \$ Incr. Over FY 10	No.	Amount Received	% \$ Incr. Over FY 10	Amount Expended	% \$ Incr. Over FY 10
Architecture & Design	12	851,352	191%	3	\$415,000	143%	\$350,510	206%
Arts & Sciences	482	144,920,292	-13%	450	\$41,675,901	8%	\$31,486,054	4%
Business Administration	32	\$23,240,443	-63%	41	\$24,418,494	53%	\$15,227,709	-5%
Communication & Information	16	\$2,967,352	-78%	26	\$2,043,815	-56%	\$2,332,020	37%
Education, Health, & Human Sciences	129	\$59,893,433	10%	72	\$15,746,125	-28%	\$16,418,445	19%
Engineering	636	258,664,868	4%	471	\$42,349,935	-16%	\$45,507,084	23%
Law	0	0	-100%	0	\$0	-100%	\$647	-100%
Nursing	14	8,442,434	-19%	6	\$103,483	-84%	\$359,532	136%
Social Work	43	\$13,524,371	-24%	35	\$5,805,823	-59%	\$8,378,494	0%
Research Centers & Institutes	146	100,665,901	-37%	135	\$20,681,730	-49%	\$26,783,867	20%
Other	16	4,391,943	-53%	15	\$1,148,831	-42%	\$6,926,264	33%
<b>Total</b>	<b>1526</b>	<b>\$617,562,389</b>	<b>-17%</b>	<b>1254</b>	<b>\$154,389,139</b>	<b>-18%</b>	<b>\$153,770,626</b>	<b>14%</b>

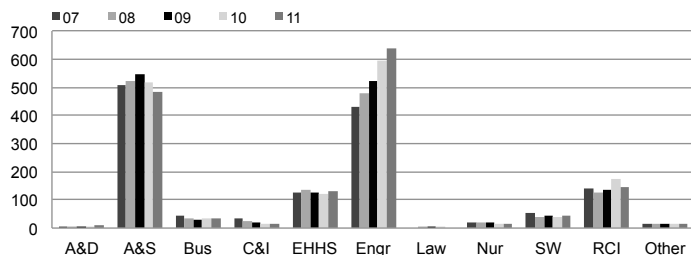
### TOP 20 AWARDS

Investigators (Primary PI First)	Departments, Centers, & Institutes	Project Title	Sponsor	Amount*
Stewart, Joseph	National Defense Business Institute	Air Force Acquisition Improvement Support (FA7014-10-R-0008) - IDIQ	Department of the Air Force	\$44,000,000
Millhorn, David; Bruce, Barry; Sedrick, Gregory; Zawodzinski, Thomas	EPSCoR	EPSCoR: Tennessee Solar Conversion and Storage Using Outreach, Research and Education	National Science Foundation	\$20,000,000
Fox, William; Murray, Matthew	Center for Business and Economic Research	Race to the Top	Tennessee Department of Education	\$8,030,958
Cole, Gregory	Institute for a Secure and Sustainable Environment	IRNC:ProNet: GLORIAD	National Science Foundation	\$5,604,251
White, Connie	Center for Literacy Studies	Tennessee Reading First Professional Development and Data Support	TN Dept. of Education - Head Start Collaboration Office	\$3,350,810
Andrews, Philip; Kovatch, Patricia; Zacharia, Thomas	Joint Institute for Computational Sciences	Augment the Kraken! Increasing the Scientific Capability and Capacity of the NSF's Most Powerful Supercomputer	National Science Foundation	\$2,850,000
Antun, John	Retail, Hospitality, and Tourism Management	Culinary Training for Pellissippi State Community College - Associate Degree Program	Pellissippi State Community College	\$2,800,500
Benner, Susan	Theory & Practice in Teacher Education	Teach/Here	National Science Foundation	\$2,782,169
Clarke, David	Center for Transportation Research	Provide Technology Transfer, Tech Assistance and Training for Local Transp. Agencies in TN	TN Dept. of Transportation - Division of Planning	\$2,556,530
Melcher, Charles	Scintillation Materials Research Center	Operating Agreement of the Scintillation Materials Research Center	Siemens	\$2,500,000
Richards, Stephen; Flinchum, Deanna	Center for Transportation Research	University Transportation Center Program Southeastern Transportation Center Rebid	U.S. Dept. of Transportation - Federal Highway Admin.	\$2,082,800
Dunne, William; Hamel, William; Hines, J.; Khomami, Bamin	College of Engineering	ARRA: ARI-R2: Sustainable Energy Laboratory	National Science Foundation	\$1,831,855
McFadden, Ronald	College of Education, Health & Human Sciences	Student Support Services	U.S. Dept. of Education	\$1,744,595
Fussell, Elizabeth; Cihak, David; Gibbons, Melinda	Center on Disability	Future Program	U.S. Dept. of Education	\$1,732,826
Campbell, Paul; Cunningham, Maryanne	SWORPS	MTSU Tennessee Center for Child Welfare FY 2011	Tennessee Department of Children's Services	\$1,375,161
Ciancio, Dennis	Educational Psychology & Counseling	Development of Integrated Text-Level Curricula for Kindergarten Through Second Grade	U.S. Dept. of Education	\$1,369,422
Wirth, Brian	Nuclear Engineering	Microstructure and Property Evolution in Advanced Cladding and Duct Materials	DOE- Idaho National Laboratory	\$1,320,086
Andrews, Philip	Joint Institute for Computational Sciences	XD Technology Audit and Insertion Service	University of Illinois At Urbana-Champaign	\$1,235,000
Liaw, Peter	Materials Science and Engineering	Computational Design of Creep-Resistant Alloys and Experimental Validation	U.S. Dept. of Energy	\$1,200,000
Wodarski, John; MacMaster, Samuel	Children's Mental Health Services Research Center	E-Therapy Screening and Interventions for Vulnerable Young Adults with SA	DHHS - Substance Abuse and Mental Health Services	\$1,196,171

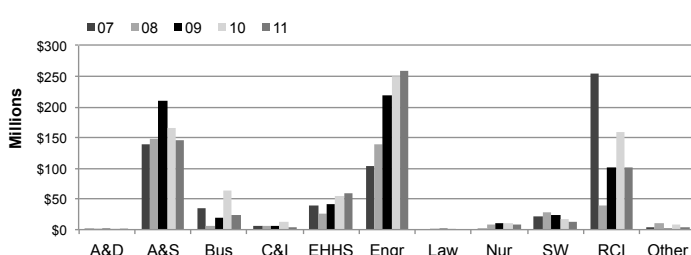
\*Anticipated Maximum

# THE UNIVERSITY OF TENNESSEE, KNOXVILLE—OFFICE OF RESEARCH QUARTERLY REPORT FOR FIRST, SECOND, THIRD AND FOURTH QUARTERS OF FISCAL YEAR 2011

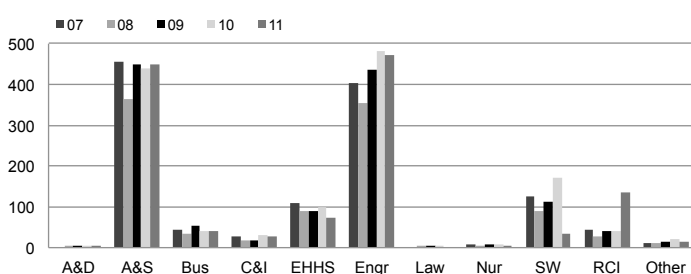
### NUMBER OF PROPOSALS SUBMITTED



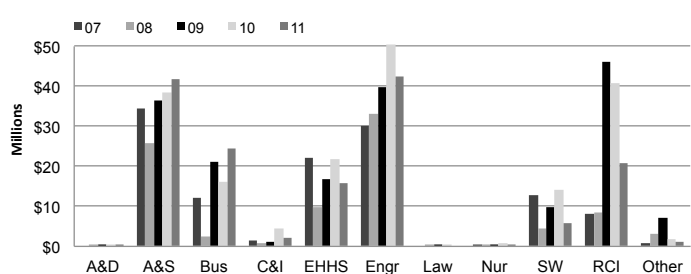
### PROPOSAL AMOUNT REQUESTED



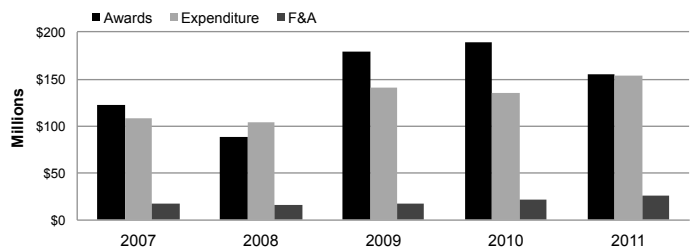
### AWARD COUNTS BY COLLEGE



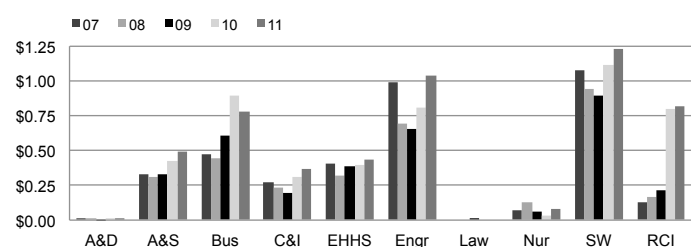
### AWARD AMOUNTS BY COLLEGE



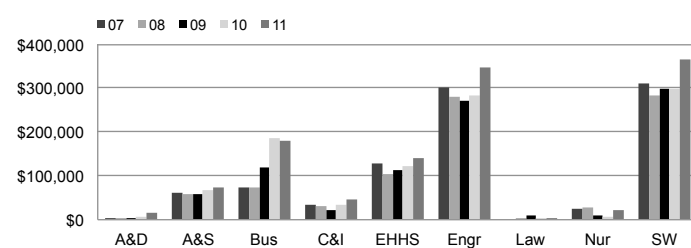
### CAMPUS TOTAL DOLLAR AMOUNT



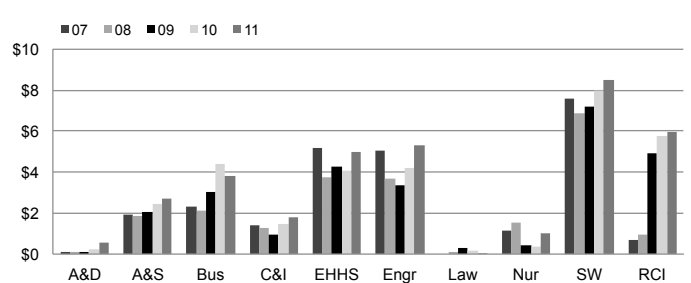
### F&A EARNED PER DOLLAR INVESTED



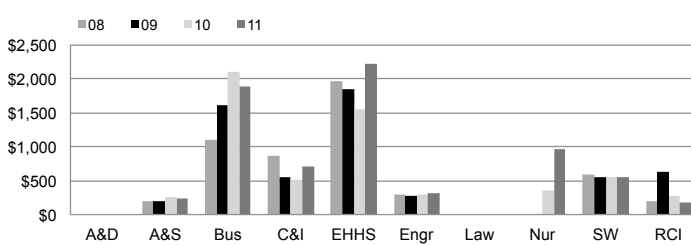
### SPONSORED EXPENDITURES PER STATE-SUPPORTED FACULTY



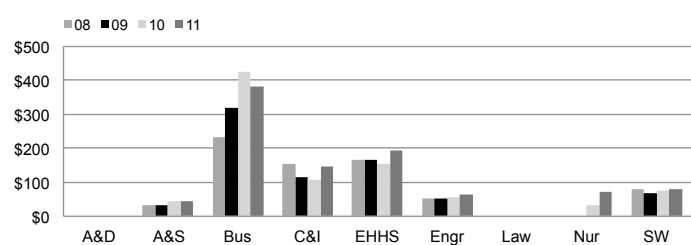
### SPONSORED EXPENDITURES PER DOLLAR INVESTED



### SPONSORED EXPENDITURES PER SQUARE FOOT



### OVERHEAD GENERATED PER SQUARE FOOT



## HOW QUARTERLY REPORT DATA ARE DERIVED

Quarterly reports are year-to-date comparisons. For example, the first quarter report is composed of data for the first three months of each fiscal year presented while the second quarter report contains data for the first six months of each fiscal year, and so forth.

Data depicting colleges and major research centers are presented to show trends within each unit.

Proposal and award data are recorded in TERA by the Office of Research.

Expenditure, F&A, University support, and faculty count data are taken from IRIS.

For more detailed information about the origins of this data, visit <http://research.utk.edu/reports>