



5-2011

Quarterly Report: First, Second & Third Quarters of Fiscal Year 2011

University of Tennessee Office of Research

Follow this and additional works at: http://trace.tennessee.edu/utk_researchreports

Recommended Citation

University of Tennessee Office of Research, "Quarterly Report: First, Second & Third Quarters of Fiscal Year 2011" (2011). *Reports*.
http://trace.tennessee.edu/utk_researchreports/13

This Report is brought to you for free and open access by the Office of Research & Engagement at Trace: Tennessee Research and Creative Exchange. It has been accepted for inclusion in Reports by an authorized administrator of Trace: Tennessee Research and Creative Exchange. For more information, please contact trace@utk.edu.

QUARTERLY REPORT

OFFICE OF RESEARCH—FIRST, SECOND AND THIRD QUARTERS OF FISCAL YEAR 2011

SPONSORED PROPOSALS, AWARDS, AND EXPENDITURES

Senior Management Area	Proposals Submitted, FY 11			Awards Received, FY 11			Sponsored Expenditures	
	No.	Amount Requested	% \$ Incr. Over FY 10	No.	Amount Received	% \$ Incr. Over FY 10	Amount Expended	% \$ Incr. Over FY 10
Architecture & Design	9	\$526,352	93.3%	1	\$265,000	81.8%	\$54,557	16.4%
Arts & Sciences	403	\$131,209,370	0.3%	313	\$25,589,553	-13.4%	\$21,665,529	6.9%
Business Administration	24	\$22,446,734	338.9%	32	\$21,904,592	245.0%	\$11,283,756	1.5%
Communication & Information	15	\$3,320,744	-72.3%	4	\$313,263	-91.7%	\$1,573,365	39.2%
Education, Health, & Human Sciences	79	\$32,609,853	6.3%	49	\$12,037,688	10.6%	\$10,953,582	15.0%
Engineering	497	\$212,702,615	17.8%	360	\$34,186,087	-1.0%	\$33,123,106	28.9%
Law	0	\$0	-100.0%	0	\$0	-100.0%	\$647	-99.5%
Nursing	12	\$7,998,825	-21.4%	3	\$26,752	-68.9%	\$272,762	106.0%
Social Work	24	\$4,740,287	-58.6%	19	\$3,524,115	-58.5%	\$5,887,963	6.5%
Research Centers & Institutes	112	\$78,758,101	94.5%	94	\$11,286,985	-53.5%	\$15,606,199	0.4%
Other	9	\$997,765	-89.1%	8	\$829,854	-39.3%	\$4,746,940	27.7%
Total	1184	\$495,310,646	14.9%	883	\$107,082,573	-10.4%	\$105,168,406	13.3%

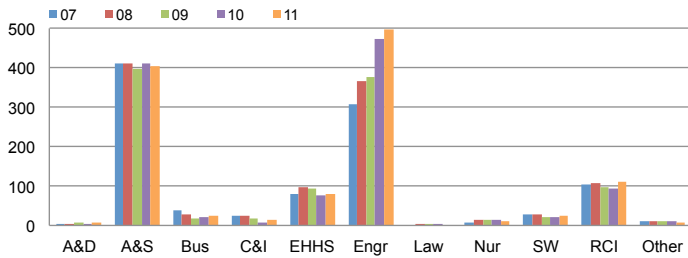
TOP 20 AWARDS

Investigators (Primary PI First)	Departments, Centers, & Institutes	Project Title	Sponsor	Amount*
Stewart, Joseph	National Defense Business Institute	Air Force Acquisition Improvement Support (FA7014-10-R-0008) - IDIQ	DOD - Department of the Air Force	\$44,000,000
Millhorn, David; Bruce, Barry; Sedrick, Gregory; Zawodzinski, Thomas	EPSCoR	EPSCoR: Tennessee Solar Conversion and Storage Using Outreach, Research and Education	National Science Foundation	\$20,000,000
Fox, William; Murray, Matthew	Center for Business and Economic Research	Race to the Top	Tennessee Department of Education	\$8,030,958
Cole, Gregory	Institute for a Secure and Sustainable Environment	IRNC:ProNet: GLORIAD	National Science Foundation	\$5,604,251
Andrews, Philip	Joint Institute for Computational Sciences	Augment the Kraken! Increasing the Scientific Capability and Capacity of the NSF	National Science Foundation	\$2,850,000
Antun, John	Retail, Hospitality, and Tourism Management	Culinary Training for Pellissippi State Community College - Associate Degree Program	Pellissippi State Community College	\$2,800,500
Benner, Susan	Theory & Practice in Teacher Education	Teach/Here	National Science Foundation	\$2,782,169
Melcher, Charles	Scintillation Materials Research Center	Operating Agreement of the Scintillation Materials Research Center	Siemens	\$2,500,000
Dunne, William; Hamel, William; Hines, J.; Khomami, Bamin	College of Engineering	ARRA: ARI-R2: Sustainable Energy Laboratory	National Science Foundation	\$1,831,855
McFadden, Ronald	Education, Health & Human Sciences	Student Support Services	U.S. Dept. of Education	\$1,744,595
Fussell, Elizabeth	Center on Disability	FUTURE Program	U.S. Dept. of Education	\$1,737,326
Rider, Robert	Education, Health & Human Sciences	Tennessee Governor's Academy 2011	Tennessee Department of Education	\$1,589,000
Campbell, Paul; Cunningham, Maryanne	Social Work Office of Research and Public Service	MTSU Tennessee Center for Child Welfare FY 2011	Tennessee Department of Children's Services	\$1,375,161
Ciancio, Dennis	Educational Psychology & Counseling	Development of Integrated Text-Level Curricula for Kindergarten Through Second Grade	U.S. Dept. of Education	\$1,369,422
Wirth, Brian	Nuclear Engineering	Microstructure and Property Evolution in Advanced Cladding and Duct Materials	DOE - Idaho National Laboratory	\$1,320,086
Andrews, Philip	Joint Institute for Computational Sciences	XD Technology Audit and Insertion Service	University of Illinois At Urbana-Champaign	\$1,235,000
Liaw, Peter	Materials Science	Computational Design of Creep-Resistant Alloys and Experimental Validation	DOE - US Dept. of Energy	\$1,200,000
Everett, Jerry	Center for Transportation Research	Law Enforcement Liaison Program	Tennessee Department of Transportation	\$1,106,854
Wodarski, John; Macmaster, Samuel	Children's Mental Health Services Research Center	E-Therapy Screening and Interventions for Vulnerable Young Adults with SA and Co	DHHS - Substance Abuse and Mental Health Services	\$1,039,167
Hallam, Rena	Child Care Resources & Referral	Signal Centers - CCRR - Hallam	Signal Centers, Inc	\$1,005,142

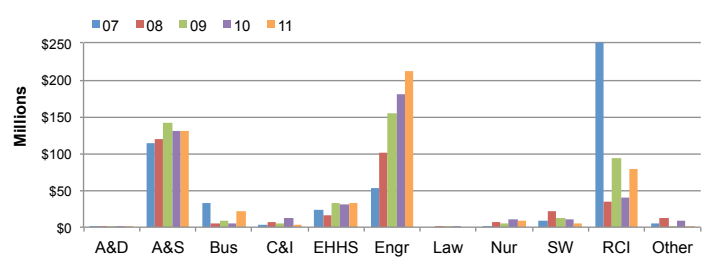
*Anticipated Maximum

THE UNIVERSITY OF TENNESSEE, KNOXVILLE—OFFICE OF RESEARCH QUARTERLY REPORT FOR FIRST, SECOND AND THIRD QUARTERS OF FISCAL YEAR 2011

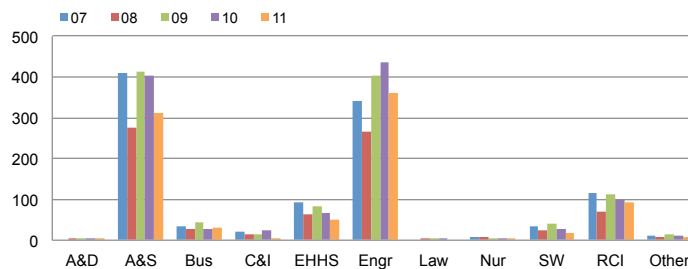
NUMBER OF PROPOSALS SUBMITTED



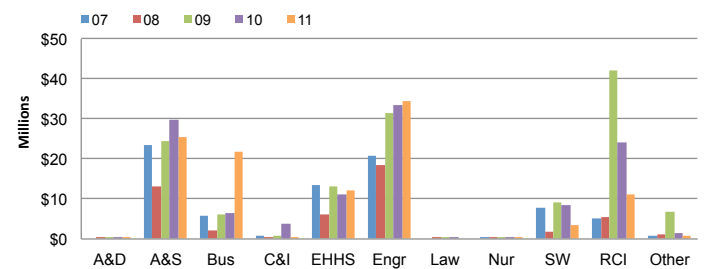
PROPOSAL AMOUNT REQUESTED



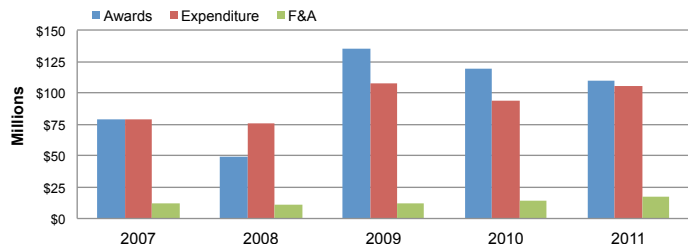
AWARD COUNTS BY COLLEGE



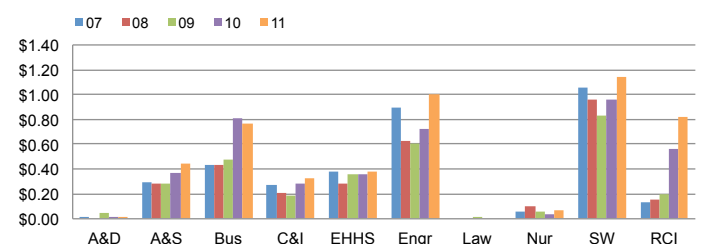
AWARD AMOUNTS BY COLLEGE



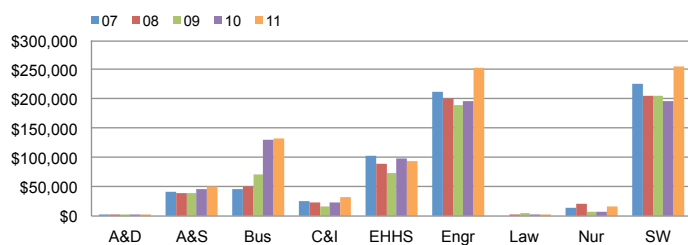
CAMPUS TOTAL DOLLAR AMOUNT



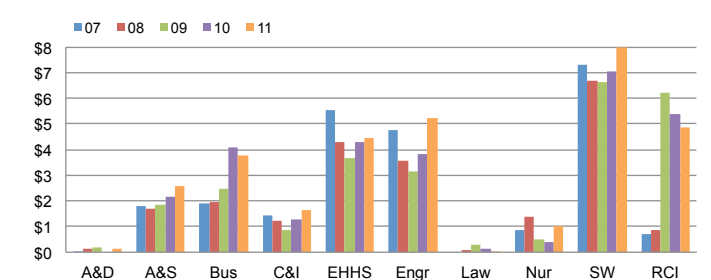
F&A EARNED PER DOLLAR INVESTED



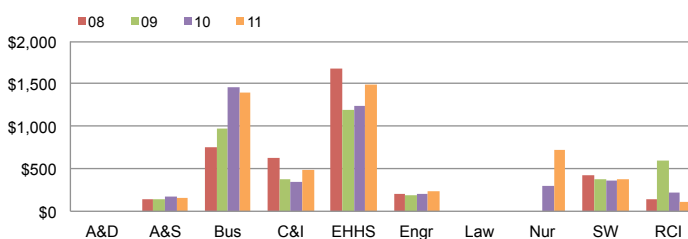
SPONSORED EXPENDITURES PER STATE-SUPPORTED FACULTY



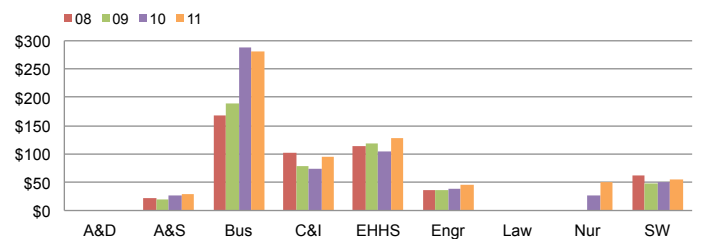
SPONSORED EXPENDITURES PER DOLLAR INVESTED



SPONSORED EXPENDITURES PER SQUARE FOOT



OVERHEAD GENERATED PER SQUARE FOOT



HOW QUARTERLY REPORT DATA ARE DERIVED

Quarterly reports are year-to-date comparisons. For example, the first quarter report is composed of data for the first three months of each fiscal year presented while the second quarter report contains data for the first six months of each fiscal year, and so forth.

Data depicting colleges and major research centers are presented to show trends within each unit.

Proposal and award data are recorded in TERA by the Office of Research.

Expenditure, F&A, University support, and faculty count data are taken from IRIS.

For more detailed information about the origins of this data, visit <http://research.utk.edu/reports>