



4-2010

Quarterly Report: First, Second & Third Quarters of Fiscal Year 2010

University of Tennessee Office of Research

Follow this and additional works at: http://trace.tennessee.edu/utk_researchreports

Recommended Citation

University of Tennessee Office of Research, "Quarterly Report: First, Second & Third Quarters of Fiscal Year 2010" (2010). *Reports*.
http://trace.tennessee.edu/utk_researchreports/15

This Report is brought to you for free and open access by the Office of Research & Engagement at Trace: Tennessee Research and Creative Exchange. It has been accepted for inclusion in Reports by an authorized administrator of Trace: Tennessee Research and Creative Exchange. For more information, please contact trace@utk.edu.

QUARTERLY REPORT

OFFICE OF RESEARCH—FIRST, SECOND AND THIRD QUARTERS OF FISCAL YEAR 2010

SPONSORED PROPOSALS, AWARDS, AND EXPENDITURES

Senior Management Area	Proposals Submitted, FY 10			Awards Received, FY 10			Sponsored Expenditures	
	No.	Amount Requested	% \$ Incr. Over FY 09	No.	Amount Received	% \$ Incr. Over FY 09	Amount Expended	% \$ Incr. Over FY 09
Arts & Sciences	410	\$130,790,321	-8%	402	\$29,542,743	22%	\$20,270,487	6%
Engineering	472	\$180,619,114	17%	436	\$33,512,868	7%	\$25,697,775	16%
Business Administration	21	\$5,114,637	-40%	29	\$6,349,871	1%	\$11,121,334	86%
Law	2	\$401,468	349%	1	\$129,468	-11%	\$129,836	-49%
Architecture & Design	4	\$272,244	85%	4	\$145,796	2,816%	\$46,883	-24%
Nursing	14	\$10,181,199	99%	2	\$86,081	-56%	\$132,419	-19%
Social Work	20	\$11,453,558	-4%	29	\$8,496,079	-8%	\$5,527,766	-1%
Education, Health, & Human Sciences	77	\$30,669,550	-4%	68	\$10,882,028	-18%	\$9,527,137	-13%
Communication & Information	9	\$11,990,083	170%	23	\$3,772,147	291%	\$1,129,978	41%
Research Centers	93	\$40,484,797	-57%	101	\$24,257,977	-43%	\$15,540,353	-63%
Other	11	\$9,186,303	486%	12	\$1,367,923	-80%	\$3,718,042	66%
Total	1,133	\$431,163,274	-5%	1,107	\$118,542,981	-12%	\$92,842,010	-15%

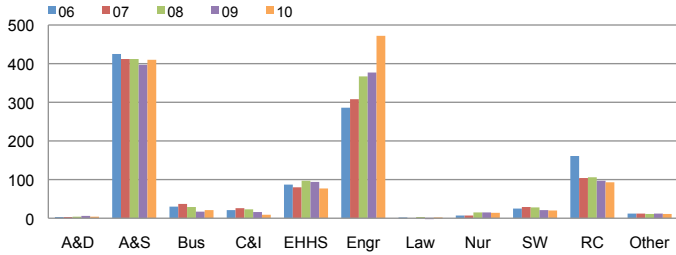
TOP 20 AWARDS

Investigators (Primary PI First)	Departments, Centers, & Institutes	Project Title	Sponsor	Maximum Amount*
Ahern, Sean D.; Huang, Jian; Klasky, Scott A.	Joint Institute for Computational Sciences	ARRA: NCS Remote Data Analysis and Visualization Center	National Science Foundation	\$10,648,448
Moore, John R.	Construction Industry Research & Policy Center	Provide Services Supportive of the Wage and Hour Div. of the Employment Standards Adm.	U.S. Dept. of Labor - Financial Services Center/OASAM	\$9,275,712
Miller, Alex; Barton, Rhonda W.; Riblett, John E.	Center for Executive Education	Continuous Process Improvement in Air Force Acquisition	Air Force	\$7,499,619
Glisson, Charles; Cheatham, Joanna; Dukes, Denzel; Green, Philip; Hemmelgarn, Anthony	Children's Mental Health Service Research Center	Testing an Organizational Implementation Strategy in Children's Mental Health	NIH - National Institute of Mental Health	\$3,170,520
Becker, Jeffrey M	Microbiology	Peptide-Cell Interactions in <i>Saccharomyces cerevisiae</i>	NIH - National Institute of General Medical Sciences	\$2,699,269
Zacharia, Thomas	Joint Institute for Computational Sciences	ARRA: Collaborative Research: An EPSCoR Desktop to Teragrid EcoSystem	National Science Foundation	\$2,675,331
Campbell, Paul; Cheatham, Joanna; Cunningham, Maryanne Lynch	SWORPS	Child Care Assessment Supportive Services Program	TN Dept. of Human Services	\$2,311,000
Cole, Gregory Scott	Office of Research	ARRA: The Taj: A New Model for Global Federated Network Infrastructure for Science and Education	National Science Foundation	\$2,293,378
Wodarski, John S.	Children's Mental Health Service Research Center	HIV/AIDS Primary Prevention Program with Caribbean Youth	Substance Abuse & Mental Health Services Adm (SAMSA)	\$2,240,730
Richards, Stephen H.; Flinchum, Deanna L.	Center for Transportation Research	University Transportation Center Program Southeastern Transportation Center Rebid	U.S. Dept. of Transportation - Research and Innovative Tech.	\$2,085,000
Hayward, Jason Peter	Nuclear Engineering	ARI-MA Research Program in Exploitation of Time-Correlated Signatures and Directionality to Detect Shielded Highly-Enriched Uranium	National Science Foundation	\$1,995,713
Long, Vena M.	Education, Health & Human Sciences	Tennessee Governor's Academy	TN Dept. of Education	\$1,728,908
Miller, Terry L.	Civil & Environmental Engineering	ARRA: Administer a TDEC Program to Provide Rebates to TN Trucking Cos. to Install APUs	TN Dept. of Environment and Conservation	\$1,713,298
Zacharia, Thomas	Joint Institute for Computational Sciences	High Performance Computing System Acquisition: Towards a Petascale Computing Environment	National Science Foundation	\$1,687,748
Birdwell, John; Horn, Sally; Icovie, David; Wang, Tse-Wei	Electrical Engineering & Computer Science	Similarity-Based Indexing and Search of Database for Correlation of Object Properties with Ref	Army - U.S. Army Aviation and Missile Command	\$1,682,482
Kovatch, Patricia Anne; Zacharia, Thomas	Joint Institute for Computational Sciences	Enhancing Computational Science Opportunities on NSF's Kraken	National Science Foundation	\$1,680,000
Campbell, Paul; Black, Brenda; Cunningham, Maryanne Lynch	SWORPS	MTSU Tennessee Center for Child Welfare FY 2010	Middle Tennessee State University	\$1,517,186
Prosser, Rebecca A.	Biochemistry, Cellular & Molecular Biology	Ethanol Effects on the Mammalian Circadian Clock	NIH - Center for Scientific Review	\$1,357,755
Campbell, Paul; Black, Brenda; Cunningham, Maryanne Lynch	SWORPS	Families First	TN Dept. of Human Services	\$1,327,997
Everett, Jerry D.	Center for Transportation Research	Law Enforcement Liaison Program	TN Dept. of Transportation - Division of Planning	\$1,194,253

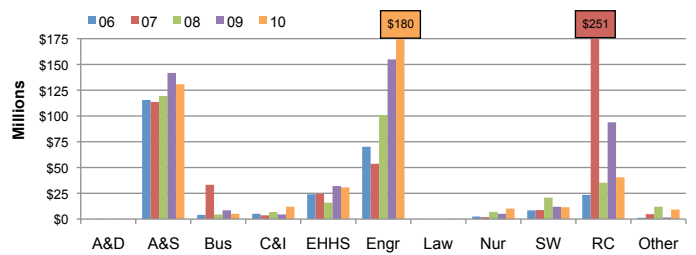
*Anticipated Amount

THE UNIVERSITY OF TENNESSEE, KNOXVILLE—OFFICE OF RESEARCH QUARTERLY REPORT FOR THE FIRST, SECOND AND THIRD QUARTERS OF FISCAL YEAR 2010

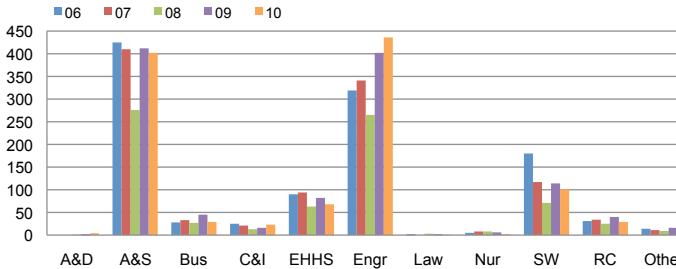
NUMBER OF PROPOSALS SUBMITTED



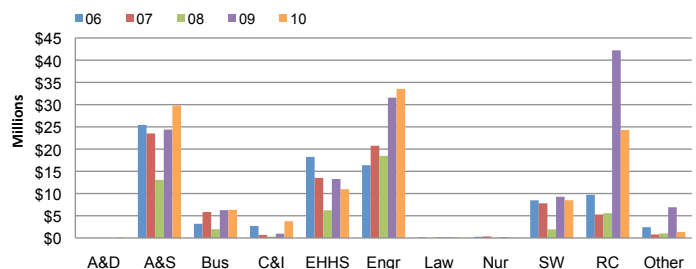
PROPOSAL AMOUNT REQUESTED



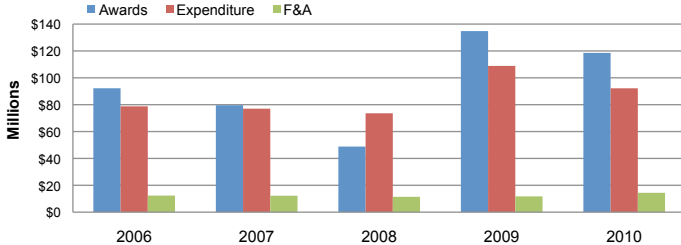
AWARD COUNTS BY COLLEGE



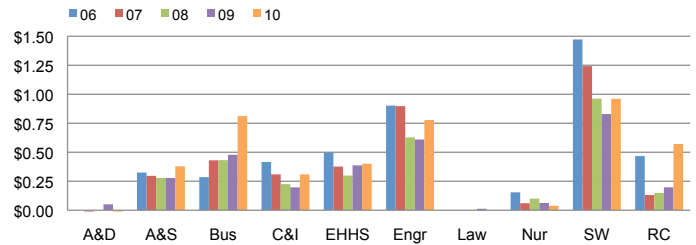
AWARD AMOUNTS BY COLLEGE



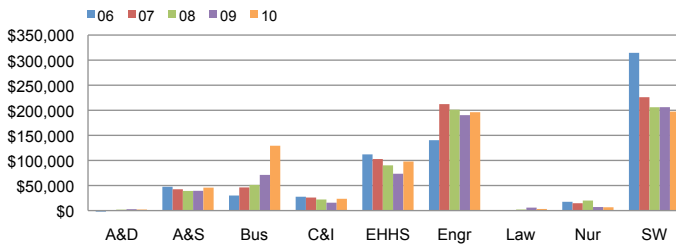
CAMPUS TOTAL DOLLAR AMOUNT



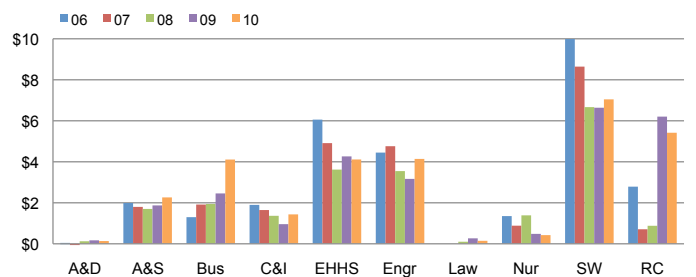
F&A EARNED PER DOLLAR INVESTED



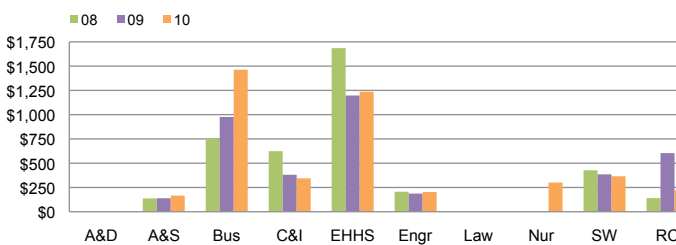
SPONSORED EXPENDITURES PER STATE-SUPPORTED FACULTY



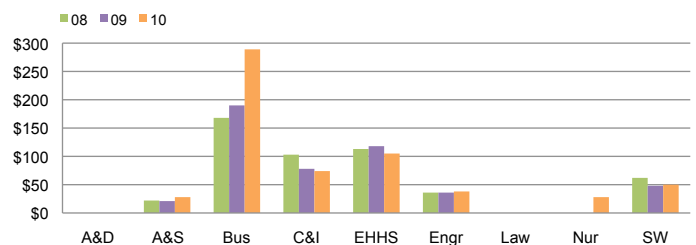
SPONSORED EXPENDITURES PER DOLLAR INVESTED



SPONSORED EXPENDITURES PER SQUARE FOOT



OVERHEAD GENERATED PER SQUARE FOOT



HOW QUARTERLY REPORT DATA ARE DERIVED

Quarterly reports are year-to-date comparisons. For example, the first quarter report is composed of data for the first three months of each fiscal year presented while the second quarter report contains data for the first six months of each fiscal year, and so forth.

Data depicting colleges and major research centers are presented to show trends within each unit.

Proposal and award data are recorded in Coeus by the Office of Research.

Expenditure, F&A, University support, and faculty count data are taken from IRIS.

For more detailed information about the origins of this data, visit <http://research.utk.edu/reports>