



2006

## Fact Book: 2005-2006

The Office of Institutional Research and Assessment

Follow this and additional works at: [http://trace.tennessee.edu/utk\\_factbook](http://trace.tennessee.edu/utk_factbook)



Part of the [Education Commons](#)

---

### Recommended Citation

The Office of Institutional Research and Assessment, "Fact Book: 2005-2006" (2006). *UTK Fact Book*.  
[http://trace.tennessee.edu/utk\\_factbook/9](http://trace.tennessee.edu/utk_factbook/9)

This Article is brought to you for free and open access by the Office of Institutional Research and Assessment at Trace: Tennessee Research and Creative Exchange. It has been accepted for inclusion in UTK Fact Book by an authorized administrator of Trace: Tennessee Research and Creative Exchange. For more information, please contact [trace@utk.edu](mailto:trace@utk.edu).

# THE UNIVERSITY of TENNESSEE

Office of Institutional Research and Assessment

**Fact Book 2005 - 2006**



## PREFACE

I welcome you to the **2005-2006** edition of the **University of Tennessee Fact Book**. The UT e-Fact Book is presented in Adobe PDF format. It is best navigated using **Contents** within the Bookmark pane as found in **Adobe Reader 7.0.1 or higher**. Use the links at the left on this page to begin navigation.

The reader is reminded that Fact Book data reflect the reorganization of the University of Tennessee. Most of the tables include figures for the programs in Knoxville, Memphis, and Tullahoma, as well as the Institute for Public Service and the Institute of Agriculture. If you need information not found in the Fact Book, please contact the Office of Institutional Research and Assessment.

This project is supported by the cooperation of dozens of people across the University of Tennessee and I am grateful for their help. Within the Office of Institutional Research and Assessment, Elizabeth Pemberton is Fact Book editor, and Mozhgan Shahidi oversees the technical and production aspects of this project. A special thank you goes to Hongwei Yang for his invaluable assistance with this year's edition. Their tireless work is greatly appreciated.

As always, I solicit your comments and suggestions regarding the Fact Book. Please contact me at [hip@tennessee.edu](mailto:hip@tennessee.edu), (865) 974-4373, or at 211 Conference Center, 600 Henley Street. You are welcome to bookmark our website at <http://oira.tennessee.edu>.

Donald Cunningham, Interim Director  
Office of Institutional Research and Assessment

E01-0160-001-07

**Headcount Enrollment**  
**By Full-Time/Part-Time, Level, Gender, and Race**  
**Fall 2005**

	Total	GENDER		RACE (U.S. Residents only)						International
		Men	Women	Am. Indian	Asian	Black	Hispanic	White	Not Reported	
<b>TOTAL ENROLLMENT</b>	<b>28,457</b>	<b>13,613</b>	<b>14,844</b>	<b>106</b>	<b>780</b>	<b>2,388</b>	<b>396</b>	<b>23,337</b>	<b>304</b>	<b>1,146</b>
Full-Time	24,638	11,878	12,760	93	694	2,129	344	20,255	244	879
Part-Time	3,819	1,735	2,084	13	86	259	52	3,082	60	267
<b>TOTAL UNDERGRADUATE</b>	<b>20,232</b>	<b>9,886</b>	<b>10,346</b>	<b>85</b>	<b>573</b>	<b>1,750</b>	<b>306</b>	<b>17,140</b>	<b>121</b>	<b>257</b>
Full-Time	18,739	9,194	9,545	76	521	1,652	276	15,874	101	239
Part-Time	1,493	692	801	9	52	98	30	1,266	20	18
<b>First-Time Freshmen</b>	<b>4,265</b>	<b>2,020</b>	<b>2,245</b>	<b>17</b>	<b>134</b>	<b>443</b>	<b>77</b>	<b>3,522</b>	<b>21</b>	<b>51</b>
Full-Time	4,243	2,009	2,234	17	132	441	76	3,508	21	48
Part-Time	22	11	11	0	2	2	1	14	0	3
<b>Other Freshmen</b>	<b>2,063</b>	<b>1,134</b>	<b>929</b>	<b>9</b>	<b>49</b>	<b>233</b>	<b>20</b>	<b>1,719</b>	<b>7</b>	<b>26</b>
Full-Time	1,961	1,085	876	8	47	228	18	1,628	6	26
Part-Time	102	49	53	1	2	5	2	91	1	0
<b>Sophomore</b>	<b>4,397</b>	<b>2,115</b>	<b>2,282</b>	<b>20</b>	<b>121</b>	<b>377</b>	<b>74</b>	<b>3,753</b>	<b>18</b>	<b>34</b>
Full-Time	4,195	2,028	2,167	17	119	357	69	3,582	18	33
Part-Time	202	87	115	3	2	20	5	171	0	1
<b>Junior</b>	<b>3,908</b>	<b>1,893</b>	<b>2,015</b>	<b>15</b>	<b>97</b>	<b>346</b>	<b>49</b>	<b>3,329</b>	<b>31</b>	<b>41</b>
Full-Time	3,696	1,795	1,901	14	94	330	45	3,148	28	37
Part-Time	212	98	114	1	3	16	4	181	3	4
<b>Senior</b>	<b>5,245</b>	<b>2,550</b>	<b>2,695</b>	<b>22</b>	<b>156</b>	<b>338</b>	<b>76</b>	<b>4,548</b>	<b>41</b>	<b>64</b>
Full-Time	4,505	2,209	2,296	19	124	291	61	3,925	28	57
Part-Time	740	341	399	3	32	47	15	623	13	7
<b>Other Undergraduate</b>	<b>354</b>	<b>174</b>	<b>180</b>	<b>2</b>	<b>16</b>	<b>13</b>	<b>10</b>	<b>269</b>	<b>3</b>	<b>41</b>
Full-Time	139	68	71	1	5	5	7	83	0	38
Part-Time	215	106	109	1	11	8	3	186	3	3
<b>TOTAL GRADUATE/PROFESSIONAL</b>	<b>8,225</b>	<b>3,727</b>	<b>4,498</b>	<b>21</b>	<b>207</b>	<b>638</b>	<b>90</b>	<b>6,197</b>	<b>183</b>	<b>889</b>
Full-Time	5,899	2,684	3,215	17	173	477	68	4,381	143	640
Part-Time	2,326	1,043	1,283	4	34	161	22	1,816	40	249

SOURCE: Student Information System

NOTE: Includes Knoxville, Institute of Agriculture, Veterinary Medicine, Space Institute, and Health Science Center

**Full-Time Equivalent Enrollment  
By Full-Time/Part-Time, Level, Gender, and Race  
Fall 2005**

	Total	GENDER		RACE (U.S. Residents Only)						International
		Men	Women	Am. Indian	Asian	Black	Hispanic	White	Not Reported	
<b>TOTAL ENROLLMENT</b>	<b>27,027.9</b>	<b>12,903.2</b>	<b>14,124.8</b>	<b>95.4</b>	<b>812.1</b>	<b>2,380.8</b>	<b>373.9</b>	<b>22,103.4</b>	<b>315.9</b>	<b>946.4</b>
Full-Time	25,407.8	12,169.5	13,238.3	89.6	774.1	2,264.7	351.1	20,801.8	294.5	832.1
Part-Time	1,620.1	733.7	886.5	5.8	38.0	116.2	22.8	1,301.7	21.4	114.3
<b>TOTAL UNDERGRADUATE</b>	<b>18,908.7</b>	<b>9,201.7</b>	<b>9,707.0</b>	<b>77.3</b>	<b>537.2</b>	<b>1,667.1</b>	<b>283.6</b>	<b>15,991.1</b>	<b>107.1</b>	<b>245.5</b>
Full-Time	18,217.5	8,875.1	9,342.5	73.0	512.3	1,620.4	269.5	15,407.0	98.1	237.3
Part-Time	691.2	326.7	364.5	4.3	24.9	46.7	14.1	584.1	9.0	8.2
<b>First-Time Freshmen</b>	<b>4,097.5</b>	<b>1,937.2</b>	<b>2,160.3</b>	<b>16.3</b>	<b>131.5</b>	<b>432.2</b>	<b>74.7</b>	<b>3,373.8</b>	<b>19.7</b>	<b>49.3</b>
Full-Time	4,085.0	1,930.7	2,154.3	16.3	130.5	430.9	74.1	3,366.3	19.7	47.2
Part-Time	12.5	6.5	5.9	0	0.9	1.3	0.7	7.5	0	2.1
<b>Other Freshmen</b>	<b>1,933.3</b>	<b>1,063.1</b>	<b>870.2</b>	<b>8.2</b>	<b>45.2</b>	<b>225.3</b>	<b>18.2</b>	<b>1,603.7</b>	<b>6.5</b>	<b>26.2</b>
Full-Time	1,880.4	1,036.9	843.5	7.6	44.4	222.1	17.0	1,557.3	5.9	26.2
Part-Time	52.9	26.2	26.7	0.6	0.8	3.2	1.2	46.5	0.7	0
<b>Sophomore</b>	<b>4,201.3</b>	<b>2,010.0</b>	<b>2,191.3</b>	<b>17.2</b>	<b>116.3</b>	<b>356.1</b>	<b>69.6</b>	<b>3,591.5</b>	<b>17.8</b>	<b>32.9</b>
Full-Time	4,097.9	1,965.1	2,132.8	15.6	115.5	346.0	67.4	3,503.4	17.8	32.3
Part-Time	103.4	44.9	58.5	1.6	0.8	10.1	2.2	88.1	0	0.6
<b>Junior</b>	<b>3,768.9</b>	<b>1,796.3</b>	<b>1,972.7</b>	<b>14.3</b>	<b>94.9</b>	<b>346.3</b>	<b>47.4</b>	<b>3,193.7</b>	<b>28.9</b>	<b>43.5</b>
Full-Time	3,664.9	1,746.8	1,918.1	13.8	93.1	338.7	45.4	3,104.7	27.7	41.5
Part-Time	104.0	49.5	54.5	0.5	1.7	7.6	2.0	89.0	1.2	2.0
<b>Senior</b>	<b>4,709.1</b>	<b>2,296.5</b>	<b>2,412.5</b>	<b>19.7</b>	<b>140.2</b>	<b>299.9</b>	<b>66.9</b>	<b>4,089.9</b>	<b>33.3</b>	<b>59.1</b>
Full-Time	4,361.3	2,133.5	2,227.8	18.5	123.5	278.1	59.5	3,798.1	27.0	56.4
Part-Time	347.8	163.1	184.7	1.2	16.7	21.8	7.3	291.8	6.3	2.7
<b>Other Undergraduate</b>	<b>198.6</b>	<b>98.6</b>	<b>100.0</b>	<b>1.6</b>	<b>9.2</b>	<b>7.2</b>	<b>6.8</b>	<b>138.4</b>	<b>0.8</b>	<b>34.6</b>
Full-Time	128.0	62.1	65.9	1.2	5.3	4.5	6.1	77.2	0	33.7
Part-Time	70.6	36.5	34.1	0.4	3.9	2.7	0.7	61.2	0.8	0.9
<b>TOTAL GRADUATE/PROFESSIONAL</b>	<b>8,119.2</b>	<b>3,701.4</b>	<b>4,417.8</b>	<b>18.1</b>	<b>274.9</b>	<b>713.8</b>	<b>90.3</b>	<b>6,112.3</b>	<b>208.8</b>	<b>700.9</b>
Full-Time	7,190.3	3,294.4	3,895.8	16.6	261.8	644.3	81.7	5,394.8	196.4	594.8
Part-Time	928.9	407.0	521.9	1.5	13.2	69.5	8.7	717.6	12.4	106.1

SOURCE: Student Information System

NOTES: Due to rounding, totals may not add evenly; includes Knoxville, Institute of Agriculture, Veterinary Medicine, Space Institute, and Health Science Center

# Headcount Enrollment

## By Level, College, Race, and Gender

### Fall 2005

	TOTAL			AMERICAN INDIAN			ASIAN			BLACK			HISPANIC			WHITE			NOT REPORTED		
	TOTAL	MEN	WOMEN	TOTAL	MEN	WOMEN	TOTAL	MEN	WOMEN	TOTAL	MEN	WOMEN	TOTAL	MEN	WOMEN	TOTAL	MEN	WOMEN	TOTAL	MEN	WOMEN
<b>UNIVERSITY TOTAL</b>	<b>28,457</b>	<b>13,613</b>	<b>14,844</b>	<b>106</b>	<b>49</b>	<b>57</b>	<b>1,520</b>	<b>841</b>	<b>679</b>	<b>2,434</b>	<b>911</b>	<b>1,523</b>	<b>442</b>	<b>199</b>	<b>243</b>	<b>23,603</b>	<b>11,423</b>	<b>12,180</b>	<b>352</b>	<b>190</b>	<b>162</b>
<b>UNDERGRADUATE TOTAL</b>	<b>20,232</b>	<b>9,886</b>	<b>10,346</b>	<b>85</b>	<b>40</b>	<b>45</b>	<b>673</b>	<b>335</b>	<b>338</b>	<b>1,772</b>	<b>728</b>	<b>1,044</b>	<b>318</b>	<b>145</b>	<b>173</b>	<b>17,254</b>	<b>8,569</b>	<b>8,685</b>	<b>130</b>	<b>69</b>	<b>61</b>
<b>GRADUATE/PROFESSIONAL TOTAL</b>	<b>8,225</b>	<b>3,727</b>	<b>4,498</b>	<b>21</b>	<b>9</b>	<b>12</b>	<b>847</b>	<b>506</b>	<b>341</b>	<b>662</b>	<b>183</b>	<b>479</b>	<b>124</b>	<b>54</b>	<b>70</b>	<b>6,349</b>	<b>2,854</b>	<b>3,495</b>	<b>222</b>	<b>121</b>	<b>101</b>
<b>UNDERGRADUATE</b>																					
Agricultural Sciences & Natural Resources	789	403	386	2	1	1	4	2	2	35	7	28	7	2	5	736	389	347	5	2	3
Architecture & Design	443	215	228	3	1	2	9	8	1	21	15	6	11	3	8	397	186	211	2	2	0
Arts & Sciences	7,365	3,249	4,116	34	13	21	288	129	159	706	247	459	115	52	63	6,167	2,777	3,390	55	31	24
Business Administration	2,889	1,780	1,109	10	6	4	103	53	50	198	107	91	43	20	23	2,518	1,584	934	17	10	7
Communication & Information	1,373	468	905	4	1	3	26	8	18	140	38	102	22	8	14	1,174	411	763	7	2	5
Education, Health & Human Sciences	1,362	428	934	7	4	3	23	4	19	134	58	76	26	11	15	1,161	349	812	11	2	9
Engineering	1,726	1,442	284	5	4	1	91	69	22	162	108	54	33	28	5	1,426	1,228	198	9	5	4
Health Science Center	180	20	160	0	0	0	4	2	2	49	4	45	0	0	0	124	13	111	3	1	2
Nursing	754	98	656	4	1	3	24	2	22	64	3	61	8	1	7	653	90	563	1	1	0
Social Work	103	11	92	2	1	1	1	0	1	27	2	25	3	0	3	69	8	61	1	0	1
University	3,248	1,772	1,476	14	8	6	100	58	42	236	139	97	50	20	30	2,829	1,534	1,295	19	13	6
<b>GRADUATE/PROFESSIONAL</b>																					
Agricultural Sciences & Natural Resources	221	124	97	0	0	0	26	16	10	6	2	4	4	1	3	176	101	75	9	4	5
Architecture & Design	26	16	10	0	0	0	2	0	2	1	0	1	1	0	1	20	14	6	2	2	0
Arts & Sciences	1,417	740	677	3	1	2	178	107	71	51	19	32	36	16	20	1,112	575	537	37	22	15
Business Administration	546	348	198	5	4	1	74	46	28	29	17	12	12	5	7	405	261	144	21	15	6
Communication & Information	296	87	209	1	0	1	12	1	11	12	5	7	1	0	1	269	81	188	1	0	1
Education, Health & Human Sciences	1,072	317	755	2	1	1	60	19	41	72	20	52	9	2	7	912	271	641	17	4	13
Engineering	729	577	152	2	1	1	245	180	65	30	20	10	12	9	3	423	353	70	17	14	3
Intercollegiate Programs	74	60	14	0	0	0	8	5	3	2	1	1	1	1	0	60	51	9	3	2	1
Law	454	223	231	2	1	1	4	2	2	54	19	35	5	3	2	373	187	186	16	11	5
Health Science Center	2,080	982	1,098	0	0	0	216	124	92	267	64	203	31	14	17	1,504	744	760	62	36	26
Nursing	182	24	158	0	0	0	6	1	5	4	0	4	0	0	0	169	23	146	3	0	3
Social Work	459	61	398	3	0	3	5	1	4	108	10	98	5	1	4	331	46	285	7	3	4
Veterinary Medicine	277	54	223	0	0	0	2	1	1	1	0	1	2	0	2	259	51	208	13	2	11
University	392	114	278	3	1	2	9	3	6	25	6	19	5	2	3	336	96	240	14	6	8

SOURCE: Student Information System

NOTE: Includes Knoxville, Institute of Agriculture, Veterinary Medicine, Space Institute, and Health Science Center

## Headcount Enrollment By Age, Level, and Gender Fall 2005

	TOTAL				UNDERGRADUATE				GRADUATE/PROFESSIONAL			
	TOTAL	MEN	WOMEN	PERCENT	TOTAL	MEN	WOMEN	PERCENT	TOTAL	MEN	WOMEN	PERCENT
<b>TOTAL</b>	<b>28,457</b>	<b>13,613</b>	<b>14,844</b>	<b>100.0</b>	<b>20,232</b>	<b>9,886</b>	<b>10,346</b>	<b>100.0</b>	<b>8,225</b>	<b>3,727</b>	<b>4,498</b>	<b>100.0</b>
< 18	32	15	17	0.1	32	15	17	0.2	0	0	0	0.0
18	2,741	1,183	1,558	9.6	2,740	1,182	1,558	13.5	1	1	0	0.0
19	4,070	1,907	2,163	14.3	4,070	1,907	2,163	20.1	0	0	0	0.0
20	3,653	1,789	1,864	12.8	3,648	1,789	1,859	18.0	5	0	5	0.1
<b>21</b>	<b>3,320</b>	<b>1,570</b>	<b>1,750</b>	<b>11.7</b>	<b>3,249</b>	<b>1,551</b>	<b>1,698</b>	<b>16.1</b>	<b>71</b>	<b>19</b>	<b>52</b>	<b>0.9</b>
22	3,010	1,451	1,559	10.6	2,464	1,263	1,201	12.2	546	188	358	6.6
23	2,153	1,101	1,052	7.6	1,280	763	517	6.3	873	338	535	10.6
24	1,532	752	780	5.4	607	343	264	3.0	925	409	516	11.2
25	1,320	677	643	4.6	416	249	167	2.1	904	428	476	11.0
<b>26</b>	<b>981</b>	<b>466</b>	<b>515</b>	<b>3.4</b>	<b>257</b>	<b>139</b>	<b>118</b>	<b>1.3</b>	<b>724</b>	<b>327</b>	<b>397</b>	<b>8.8</b>
27	706	356	350	2.5	175	91	84	0.9	531	265	266	6.5
28	604	348	256	2.1	177	109	68	0.9	427	239	188	5.2
29	458	248	210	1.6	123	69	54	0.6	335	179	156	4.1
30	445	232	213	1.6	118	61	57	0.6	327	171	156	4.0
<b>31</b>	<b>375</b>	<b>214</b>	<b>161</b>	<b>1.3</b>	<b>94</b>	<b>48</b>	<b>46</b>	<b>0.5</b>	<b>281</b>	<b>166</b>	<b>115</b>	<b>3.4</b>
32	295	149	146	1.0	80	38	42	0.4	215	111	104	2.6
33	256	122	134	0.9	63	25	38	0.3	193	97	96	2.3
34	253	120	133	0.9	59	19	40	0.3	194	101	93	2.4
35	228	112	116	0.8	64	29	35	0.3	164	83	81	2.0
<b>36</b>	<b>200</b>	<b>105</b>	<b>95</b>	<b>0.7</b>	<b>53</b>	<b>33</b>	<b>20</b>	<b>0.3</b>	<b>147</b>	<b>72</b>	<b>75</b>	<b>1.8</b>
37	145	70	75	0.5	45	21	24	0.2	100	49	51	1.2
38	119	58	61	0.4	31	16	15	0.2	88	42	46	1.1
39	140	55	85	0.5	30	8	22	0.1	110	47	63	1.3
40	129	49	80	0.5	35	10	25	0.2	94	39	55	1.1
<b>41 - 45</b>	<b>477</b>	<b>177</b>	<b>300</b>	<b>1.7</b>	<b>131</b>	<b>46</b>	<b>85</b>	<b>0.6</b>	<b>346</b>	<b>131</b>	<b>215</b>	<b>4.2</b>
46 - 50	391	137	254	1.4	106	34	72	0.5	285	103	182	3.5
51 - 64	392	133	259	1.4	75	23	52	0.4	317	110	207	3.9
65 AND OVER	19	12	7	0.1	10	5	5	0.0	9	7	2	0.1
Missing	13	5	8	0.0	0	0	0	0.0	13	5	8	0.2

SOURCE: Student Information System

NOTE: Includes Knoxville, Institute of Agriculture, Veterinary Medicine, Space Institute, and Health Science Center

## Distribution of Student Credit Hour Loads Fall 2005

CREDIT HOURS	TOTAL	UNDERGRADUATE						GRADUATE	PROFESSIONAL
		FRESHMAN	SOPHOMORE	JUNIOR	SENIOR	5TH YEAR	OTHER		
1	62	0	2	2	6	1	5	46	0
2	45	0	1	2	7	0	8	26	1
3	1,180	17	17	27	106	1	78	934	0
4	143	2	12	7	30	0	24	50	18
5	49	1	0	2	10	0	14	22	0
6	1,229	20	47	47	171	10	40	894	0
7	300	12	15	14	59	4	15	181	0
8	205	2	10	8	23	1	7	54	100
9	1,479	25	27	54	168	10	12	1,183	0
10	741	23	43	34	70	9	3	556	3
11	298	22	28	15	52	2	9	163	7
12	3,753	550	546	633	1,121	48	57	759	39
13	3,437	1,321	789	474	555	33	21	197	47
14	3,200	1,572	568	526	367	20	13	95	39
15	4,840	1,168	873	887	1,019	40	19	517	317
16	3,154	1,058	854	475	459	38	11	85	174
17	1,711	408	315	250	264	18	8	65	383
18	1,144	98	172	249	328	21	7	16	253
19	422	28	69	96	111	11	2	99	6
20	154	1	4	8	13	1	1	35	91
21	217	0	3	9	23	2	0	4	176
22	70	0	2	33	9	1	0	25	0
23	67	0	0	46	1	0	0	19	1
24	155	0	0	0	0	0	0	0	155
25	89	0	0	2	2	0	0	5	80
over 25	313	0	0	8	0	0	0	1	304
<b>TOTAL</b>	<b>28,457</b>	<b>6,328</b>	<b>4,397</b>	<b>3,908</b>	<b>4,974</b>	<b>271</b>	<b>354</b>	<b>6,031</b>	<b>2,194</b>
<b>AVERAGE CREDIT HOURS</b>	<b>13.4</b>	<b>14.3</b>	<b>14.3</b>	<b>14.5</b>	<b>13.4</b>	<b>13.9</b>	<b>8.4</b>	<b>9.2</b>	<b>19.1</b>

SOURCE: Student Information System

NOTE: Includes Knoxville, Institute of Agriculture, Veterinary Medicine, Space Institute, and Health Science Center



**Student Credit Hours  
By Level, College, and Term  
FY 2000-2005**

	SUMMER TERM					FALL TERM					SPRING TERM				
	2000	2001	2002	2003	2004	2000	2001	2002	2003	2004	2001	2002	2003	2004	2005
<b>UNIVERSITY TOTAL</b>	<b>62,690</b>	<b>61,220</b>	<b>61,000</b>	<b>59,702</b>	<b>54,393</b>	<b>325,232</b>	<b>328,972</b>	<b>328,855</b>	<b>321,860</b>	<b>328,401</b>	<b>302,838</b>	<b>307,023</b>	<b>302,494</b>	<b>329,614</b>	<b>303,542</b>
<b>UNDERGRADUATE TOTAL</b>	<b>43,550</b>	<b>42,687</b>	<b>43,161</b>	<b>42,497</b>	<b>38,128</b>	<b>275,060</b>	<b>278,412</b>	<b>276,492</b>	<b>269,548</b>	<b>274,853</b>	<b>254,722</b>	<b>256,906</b>	<b>253,133</b>	<b>279,582</b>	<b>252,900</b>
<b>GRADUATE/PROFESSIONAL TOTAL</b>	<b>19,140</b>	<b>18,533</b>	<b>17,839</b>	<b>17,205</b>	<b>16,265</b>	<b>50,172</b>	<b>50,560</b>	<b>52,363</b>	<b>52,312</b>	<b>53,548</b>	<b>48,116</b>	<b>50,117</b>	<b>49,361</b>	<b>50,032</b>	<b>50,642</b>
<b>UNDERGRADUATE</b>															
Agricultural Sciences & Natural Resources	38	56	425	371	67	7,636	8,759	8,553	7,208	6,195	7,072	8,427	8,425	6,456	5,949
Architecture & Design	517	555	410	382	446	5,082	4,727	5,233	4,837	4,786	4,554	4,392	4,651	4,299	4,597
Arts & Sciences	25,233	24,196	23,933	24,451	23,355	173,573	173,696	172,406	171,224	178,620	156,067	155,484	152,444	185,338	161,264
Business Administration	7,368	7,559	8,478	6,950	6,352	31,795	33,146	33,905	33,336	32,944	31,774	32,593	32,667	31,240	30,196
Communication & Information	2,322	2,398	2,392	2,006	1,546	11,760	11,998	12,927	12,569	12,815	11,020	11,507	11,882	12,348	12,447
Education, Health & Human Sciences	5,790	5,869	5,706	6,464	4,613	24,395	24,337	23,236	20,434	19,666	27,235	26,822	25,587	22,735	21,804
Engineering	1,820	1,588	1,257	1,365	1,195	12,453	12,492	12,820	12,652	12,967	11,197	11,449	11,509	11,392	11,200
Intercollegiate Programs	12	0	0	0	28	3,787	4,183	2,082	2,066	1,845	982	1,102	832	733	552
Nursing	381	403	481	424	448	3,368	3,492	3,625	3,865	3,801	3,723	3,625	3,684	3,759	3,765
Social Work	69	60	48	84	78	543	771	843	630	546	540	693	632	629	573
University	0	3	31	0	0	668	811	862	727	668	558	812	820	653	553
<b>GRADUATE/PROFESSIONAL</b>															
Agricultural Sciences & Natural Resources	388	357	297	323	414	1,160	1,017	1,213	1,137	1,262	1,101	1,113	1,270	1,338	1,170
Architecture & Design	16	24	12	9	20	288	334	233	333	362	317	390	289	318	339
Arts & Sciences	4,292	3,981	3,374	3,916	3,515	10,861	11,243	11,093	11,480	12,613	10,296	10,957	10,898	11,333	11,810
Biomedical Science	0	0	0	0	0	0	0	0	0	0	0	0	0	0	0
Business Administration	1,580	1,517	1,541	1,492	1,683	6,845	6,552	7,233	7,427	7,334	5,952	6,193	4,919	5,449	5,112
Communication & Information	908	689	701	734	620	1,418	1,379	1,493	1,524	1,675	1,342	1,374	1,437	1,563	1,751
Education, Health & Human Sciences	8,350	8,205	7,876	6,567	5,894	10,925	10,159	10,203	9,237	9,459	11,385	11,020	10,668	9,719	9,677
Engineering	1,522	1,370	1,440	1,447	1,297	3,200	3,346	4,168	4,686	4,682	2,870	3,585	4,156	4,451	4,538
Law	539	379	223	198	301	6,916	6,972	6,965	6,858	6,767	6,621	6,668	6,722	6,570	6,507
Nursing	322	401	647	714	763	842	1,270	1,237	1,360	1,414	869	1,070	1,063	1,191	1,212
Social Work	506	785	800	856	736	2,765	2,923	3,049	2,968	3,967	2,464	2,862	2,765	2,809	3,701
Veterinary Medicine	708	810	922	928	1,010	4,916	5,329	5,440	5,207	3,968	4,869	4,882	5,165	5,216	4,720
University	9	15	6	21	12	36	36	36	95	45	30	3	9	75	105

SOURCE: Class Roll Reporting File

NOTE: Health Science Center data are not included

**Top 10 Enrollment Feeders  
By Tennessee County, State, and Country  
Fall 2005**

COUNTY	TOTAL	UNDERGRAD	GRAD
TENNESSEE	22,969	16,964	6,005
Knox	8,011	5,571	2,440
Shelby	2,548	1,748	800
Davidson	1,286	946	340
Williamson	1,222	1,100	122
Blount	990	721	269
Hamilton	963	760	203
Anderson	690	528	162
Sevier	556	455	101
Sullivan	531	429	102
Rutherford	395	296	99

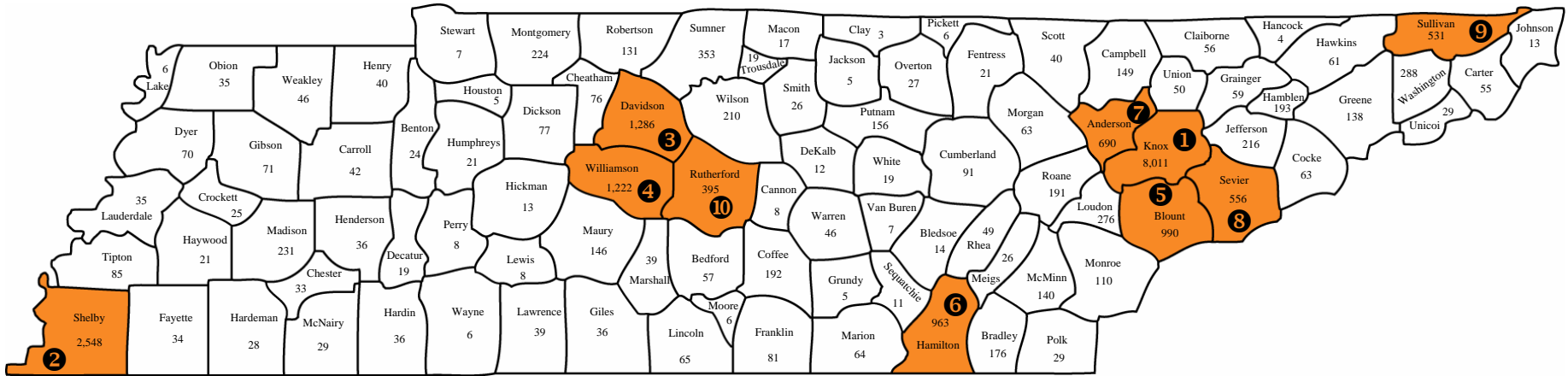
STATE	TOTAL	UNDERGRAD	GRAD
OUT-OF-STATE	4,342	3,011	1,331
Virginia	604	496	108
Georgia	569	454	115
Ohio	345	290	55
North Carolina	327	241	86
Florida	188	124	64
Arkansas	170	33	137
South Carolina	152	108	44
Mississippi	144	52	92
Pennsylvania	140	93	47
Maryland	139	93	46

COUNTRY	TOTAL	UNDERGRAD	GRAD
INTERNATIONAL	1,146	257	889
China	301	17	284
India	187	10	177
Korea	123	31	92
Canada	41	24	17
Taiwan	38	11	27
Japan	24	9	15
United Kingdom	23	16	7
Turkey	20	0	20
United Arab Emirates	18	17	1
Bangladesh	17	2	15
Germany	17	9	8

SOURCE: Student Information System

NOTE: Includes Knoxville, Institute of Agriculture, Veterinary Medicine, Space Institute, and Health Science Center

# Enrollment By County Fall 2005

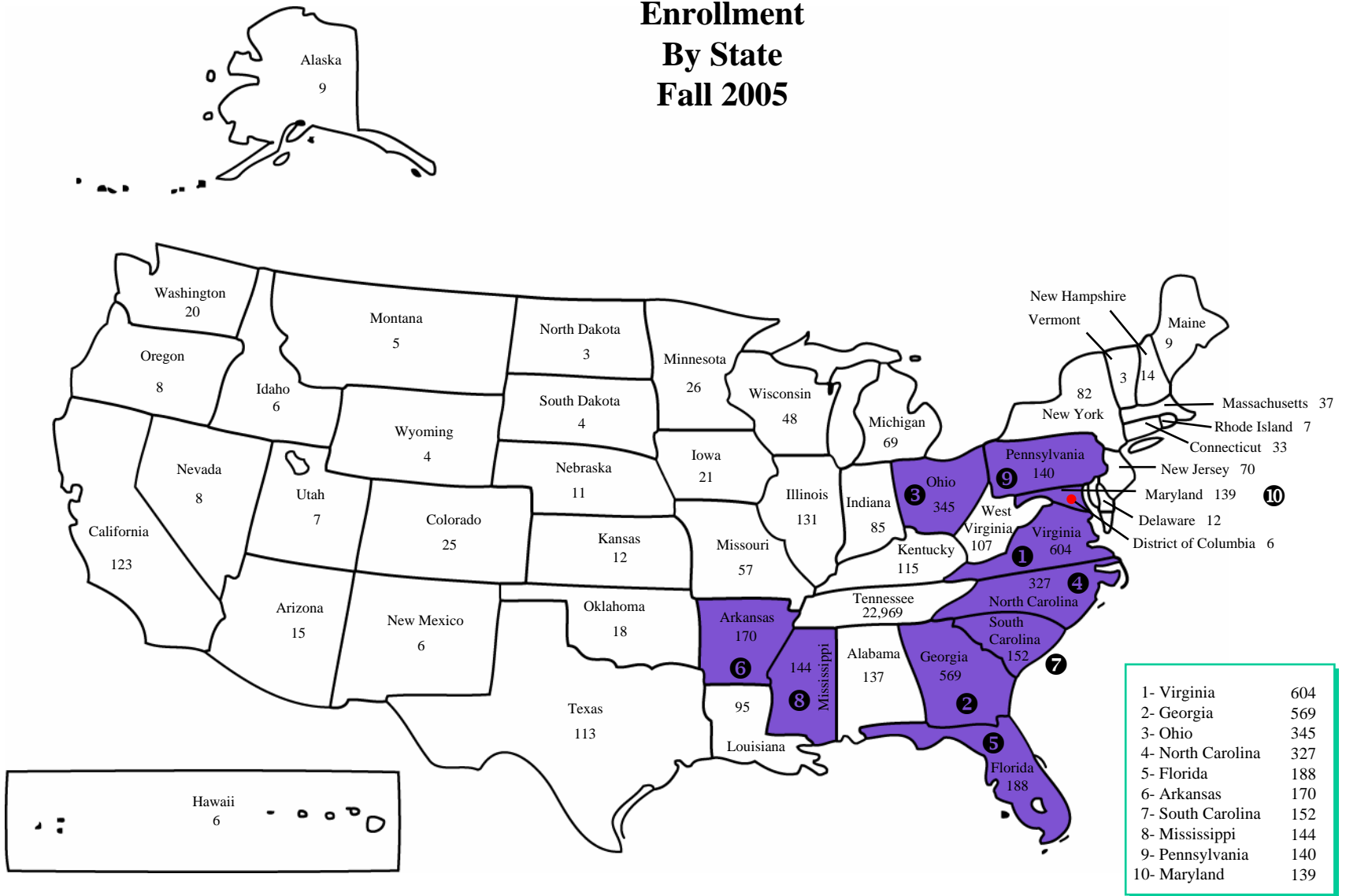


1- Knox	8,011
2- Shelby	2,548
3- Davidson	1,286
4- Williamson	1,222
5- Blount	990
6- Hamilton	963
7- Anderson	690
8- Sevier	556
9- Sullivan	531
10- Rutherford	395

SOURCE: Student Information System

NOTE: Includes Knoxville, Institute of Agriculture, Veterinary Medicine, Space Institute, and Health Science Center

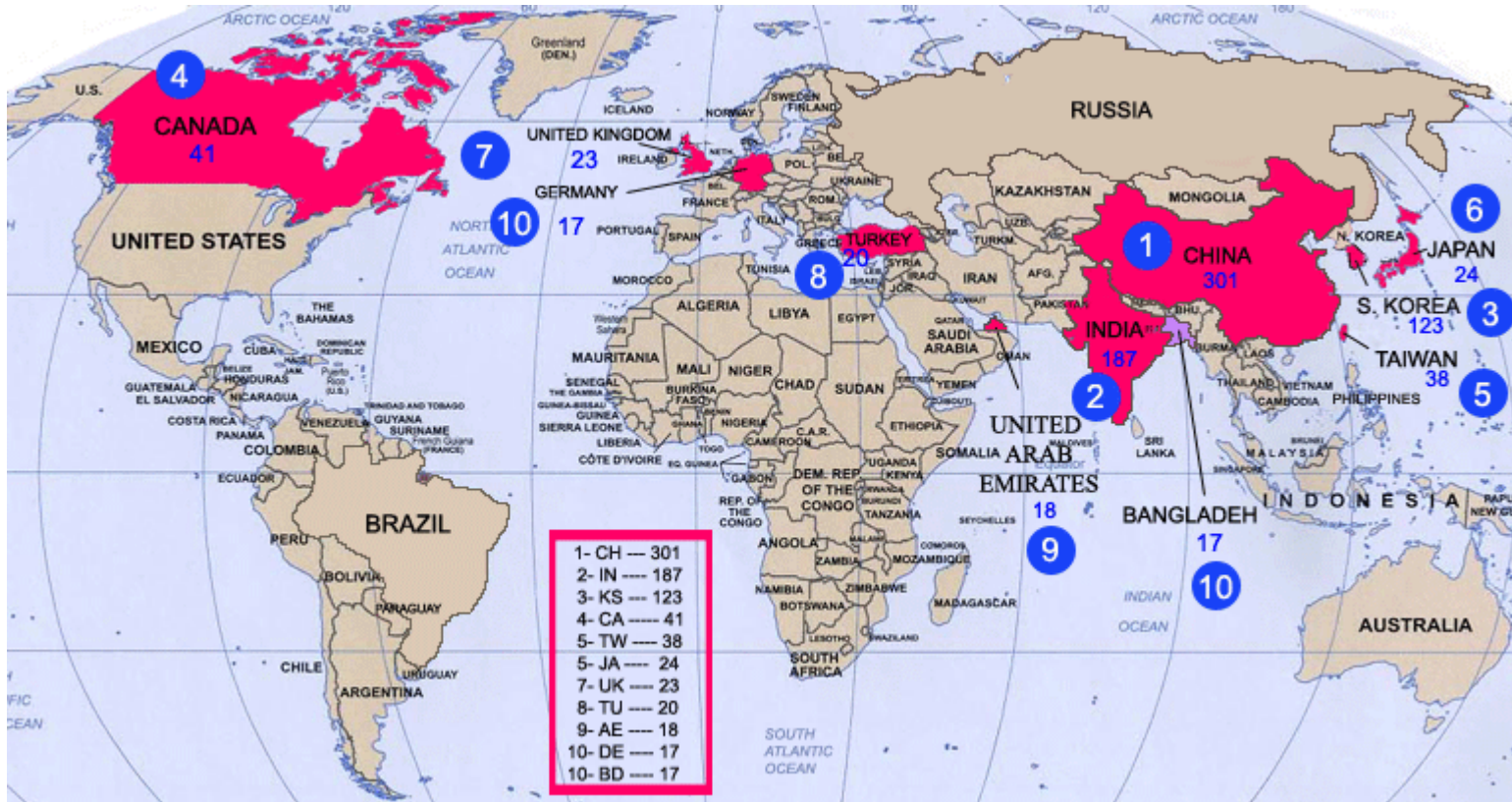
# Enrollment By State Fall 2005



SOURCE: Student Information System

Note: Includes Knoxville, Institute of Agriculture, Veterinary Medicine, Space Institute, and Health Science Center

# Enrollment By Country Fall 2005



SOURCE: Student Information System

NOTE: Includes Knoxville, Institute of Agriculture, Veterinary Medicine, Space Institute, and Health Science Center

## Headcount Enrollment By Race and Gender Fall 1988-2005

YEAR	TOTAL			AMERICAN INDIAN			ASIAN			BLACK			HISPANIC			WHITE			NOT REPORTED		
	Total	Men	Women	Total	Men	Women	Total	Men	Women	Total	Men	Women	Total	Men	Women	Total	Men	Women	Total	Men	Women
1988	24,390	12,668	11,722	44	19	25	681	453	228	1,167	501	666	139	89	50	22,359	11,606	10,753	0	0	0
1989	25,016	12,875	12,141	41	21	20	715	467	248	1,237	556	681	168	94	74	22,855	11,737	11,118	0	0	0
1990	25,414	13,086	12,328	44	18	26	787	507	280	1,317	584	733	182	102	80	23,084	11,875	11,209	0	0	0
1991	25,598	13,061	12,537	50	23	27	920	589	331	1,349	599	750	186	99	87	23,093	11,751	11,342	0	0	0
1992	25,998	13,377	12,621	58	35	23	986	632	354	1,414	631	783	226	116	110	23,314	11,963	11,351	0	0	0
1993	25,890	13,157	12,733	79	40	39	1,030	638	392	1,361	598	763	243	118	125	23,177	11,763	11,414	0	0	0
1994	25,412	12,935	12,477	73	37	36	995	612	383	1,320	593	727	256	131	125	22,768	11,562	11,206	0	0	0
1995	25,251	12,534	12,717	86	40	46	995	594	401	1,260	554	706	259	137	122	22,651	11,209	11,442	0	0	0
1996	25,086	12,349	12,737	83	41	42	982	568	414	1,216	506	710	264	141	123	22,541	11,093	11,448	0	0	0
1997	25,039	12,289	12,750	83	47	36	1,006	564	442	1,288	547	741	285	156	129	22,377	10,975	11,402	0	0	0
1998	25,611	12,393	13,218	74	37	37	1,024	570	454	1,414	591	823	295	155	140	22,804	11,040	11,764	0	0	0
1999	25,981	12,493	13,488	84	36	48	1,046	579	467	1,518	602	916	320	164	156	23,013	11,112	11,901	0	0	0
2000	25,474	12,074	13,400	77	32	45	1,083	577	506	1,540	643	897	312	155	157	22,364	10,619	11,745	98	48	50
2001	26,033	12,243	13,790	85	30	55	1,137	630	507	1,669	668	1,001	344	165	179	22,635	10,672	11,963	163	78	85
2002*	27,971	13,285	14,686	101	42	59	1,460	794	666	2,016	764	1,252	368	182	186	23,690	11,353	12,337	336	150	186
2003*	27,281	13,073	14,208	96	41	55	1,454	817	637	2,020	786	1,234	357	174	183	22,988	11,084	11,904	366	171	195
2004*	27,769	13,343	14,426	113	54	59	1,458	833	625	2,180	836	1,344	387	186	201	23,290	11,263	12,027	341	171	170
2005*	28,457	13,613	14,844	106	49	57	1,520	841	679	2,434	911	1,523	442	199	243	23,603	11,423	12,180	352	190	162

SOURCE: Student Information System

\*Data for 2002 - 2005 include Knoxville, Institute of Agriculture, Veterinary Medicine, Space Institute, and Health Science Center

**Total Headcount Enrollment  
By Level, Full-Time and Part-Time  
Fall 2001-2005**

	2001	2002*	2003*	2004*	2005*	2001	2002*	2003*	2004*	2005*	2001	2002*	2003*	2004*	2005*
<b>TOTAL</b>	<b>25,589</b>	<b>25,865</b>	<b>27,239</b>	<b>27,769</b>	<b>28,457</b>	<b>21,701</b>	<b>21,859</b>	<b>23,288</b>	<b>23,986</b>	<b>24,638</b>	<b>3,888</b>	<b>4,006</b>	<b>3,951</b>	<b>3,783</b>	<b>3,819</b>
First-time Freshmen	3,958	3,682	3,579	4,422	4,265	3,898	3,638	3,529	4,395	4,243	60	44	50	27	22
Other Freshmen	1,721	1,683	1,615	1,646	2,063	1,591	1,602	1,521	1,565	1,961	130	81	94	81	102
Sophomore	4,253	4,078	3,903	3,845	4,397	4,024	3,862	3,701	3,654	4,195	229	216	202	191	202
Undergraduate Special	327	376	318	327	354	84	119	98	92	139	243	257	220	235	215
Junior	4,139	4,084	3,998	3,848	3,908	3,795	3,763	3,736	3,601	3,696	344	321	262	247	212
Senior	5,429	5,737	5,487	5,257	4,974	4,511	4,809	4,645	4,497	4,272	918	928	842	760	702
5th Year Undergraduate	297	316	324	294	271	232	261	283	249	233	65	55	41	45	38
<b>UNDERGRADUATE TOTAL</b>	<b>20,124</b>	<b>19,956</b>	<b>19,224</b>	<b>19,639</b>	<b>20,232</b>	<b>18,135</b>	<b>18,054</b>	<b>17,513</b>	<b>18,053</b>	<b>18,739</b>	<b>1,989</b>	<b>1,902</b>	<b>1,711</b>	<b>1,586</b>	<b>1,493</b>
Graduate Special	328	414	409	485	506	76	98	72	78	95	252	316	337	407	411
Master Candidate	3,281	3,308	3,753	3,646	3,480	2,279	2,197	2,561	2,567	2,386	1,002	1,111	1,192	1,079	1,094
Education Special	46	42	56	40	30	6	6	4	6	10	40	36	52	34	20
Doctoral - Early	1,129	1,201	1,390	1,598	1,789	688	719	922	1,072	1,254	441	482	468	526	535
Doctoral - Late	225	213	311	237	223	62	59	132	98	79	163	154	179	139	144
Post Doctoral	0	4	3	4	3	0	1	1	0	0	0	3	2	4	3
<b>GRADUATE TOTAL</b>	<b>5,009</b>	<b>5,182</b>	<b>5,922</b>	<b>6,010</b>	<b>6,031</b>	<b>3,111</b>	<b>3,080</b>	<b>3,692</b>	<b>3,821</b>	<b>3,824</b>	<b>1,898</b>	<b>2,102</b>	<b>2,230</b>	<b>2,189</b>	<b>2,207</b>
Professional 1st	272	344	748	859	642	272	344	746	857	642	0	0	2	2	0
Professional 2nd	68	136	430	328	580	68	136	428	327	580	0	0	2	1	0
Professional 3rd	116	229	554	611	624	115	227	550	609	623	1	2	4	2	1
Professional 4th	0	18	361	322	348	0	18	359	319	230	0	0	2	3	118
<b>PROFESSIONAL TOTAL</b>	<b>456</b>	<b>727</b>	<b>2,093</b>	<b>2,120</b>	<b>2,194</b>	<b>455</b>	<b>725</b>	<b>2,083</b>	<b>2,112</b>	<b>2,075</b>	<b>1</b>	<b>2</b>	<b>10</b>	<b>8</b>	<b>119</b>

SOURCE: Student Information System

\*Data for 2002 - 2005 include Knoxville, Institute of Agriculture, Veterinary Medicine, Space Institute, and Health Science Center

**First-Time Freshmen Headcount Enrollment  
By College, Race, and Gender  
Fall 2005**

	TOTAL			AMERICAN INDIAN			ASIAN			BLACK			HISPANIC			WHITE			NOT REPORTED		
	Total	Men	Women	Total	Men	Women	Total	Men	Women	Total	Men	Women	Total	Men	Women	Total	Men	Women	Total	Men	Women
<b>TOTAL</b>	<b>4,265</b>	<b>2,020</b>	<b>2,245</b>	<b>17</b>	<b>7</b>	<b>10</b>	<b>157</b>	<b>69</b>	<b>88</b>	<b>446</b>	<b>172</b>	<b>274</b>	<b>79</b>	<b>31</b>	<b>48</b>	<b>3,544</b>	<b>1,733</b>	<b>1,811</b>	<b>22</b>	<b>8</b>	<b>14</b>
<b>COLLEGE</b>																					
Agricultural Sciences & Natural Resources	143	67	76	0	0	0	0	0	0	6	2	4	0	0	0	137	65	72	0	0	0
Architecture & Design	98	44	54	0	0	0	2	2	0	7	4	3	2	1	1	87	37	50	0	0	0
Arts & Sciences	1,538	609	929	10	4	6	76	33	43	198	58	140	30	10	20	1,214	501	713	10	3	7
Business Administration	618	384	234	1	0	1	24	11	13	49	25	24	9	6	3	534	341	193	1	1	0
Communication & Information	209	58	151	0	0	0	8	0	8	33	8	25	6	2	4	160	48	112	2	0	2
Education, Health & Human Sciences	195	74	121	2	1	1	2	1	1	29	13	16	7	2	5	152	57	95	3	0	3
Engineering	420	353	67	0	0	0	19	11	8	35	22	13	10	7	3	352	310	42	4	3	1
Nursing	175	13	162	0	0	0	5	1	4	18	0	18	2	0	2	150	12	138	0	0	0
Social Work	17	0	17	0	0	0	0	0	0	4	0	4	1	0	1	12	0	12	0	0	0
University	852	418	434	4	2	2	21	10	11	67	40	27	12	3	9	746	362	384	2	1	1

SOURCE: Student Information System

NOTE: The Health Science Center does not enroll first-time freshmen



## Applied, Admitted, and Enrolled Freshmen Fall 1984-2005

Year	Number Applied	Number Admitted	Percentage of Applicants Admitted	Number Enrolled	Percentage of Applicants Enrolled	Percentage of Admitted Enrolled
1984	6,153	4,679	76%	3,353	54%	72%
1985	6,139	4,891	80%	3,494	57%	71%
1986	6,699	5,334	80%	3,699	55%	69%
1987	6,892	5,530	80%	3,834	56%	69%
1988	7,822	6,021	77%	3,795	49%	63%
1989	7,222	5,739	79%	3,390	47%	59%
1990	7,526	5,816	77%	3,418	45%	59%
1991	6,994	5,070	72%	3,060	44%	60%
1992	7,583	5,573	73%	3,219	42%	58%
1993	7,473	5,372	72%	3,013	40%	56%
1994	7,027	5,179	74%	2,912	41%	56%
1995	8,305	5,977	72%	3,506	42%	59%
1996	8,630	6,438	75%	3,692	43%	57%
1997	8,923	6,740	76%	3,890	44%	58%
1998	9,464	7,177	76%	3,806	40%	53%
1999	10,634	7,148	67%	4,155	39%	58%
2000	10,171	6,344	62%	3,833	38%	60%
2001	8,263	5,675	69%	3,958	48%	70%
2002	9,724	5,629	58%	3,682	38%	65%
2003	9,514	6,790	71%	3,579	38%	53%
2004	10,832	4,793	44%	4,422	41%	92%
2005	12,251	9,060	74%	4,265	35%	47%

## Average Test Score, High School GPA, and Class Ranking For First-Time Freshmen Fall 1991-2005

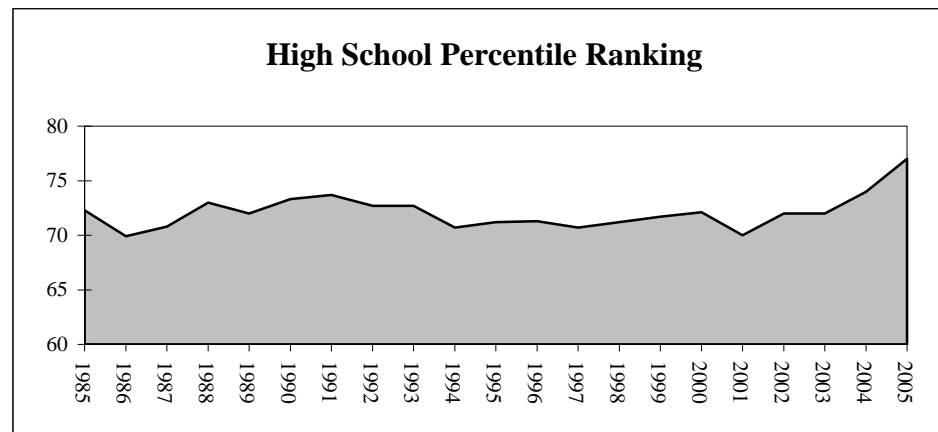
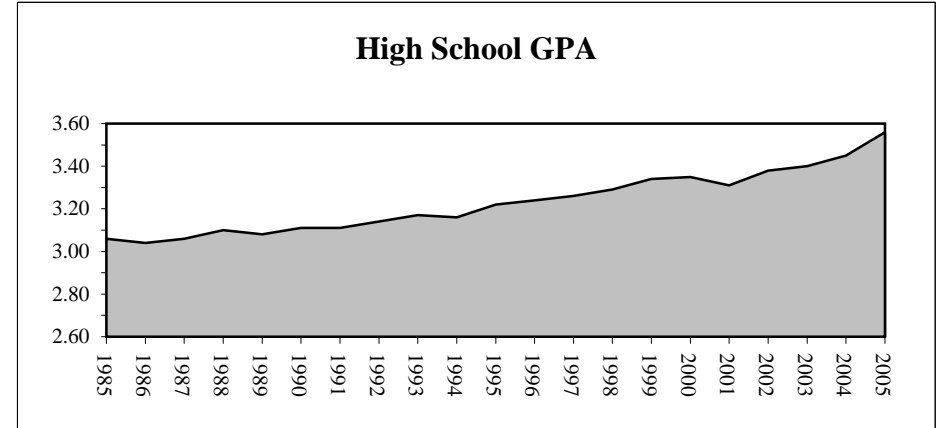
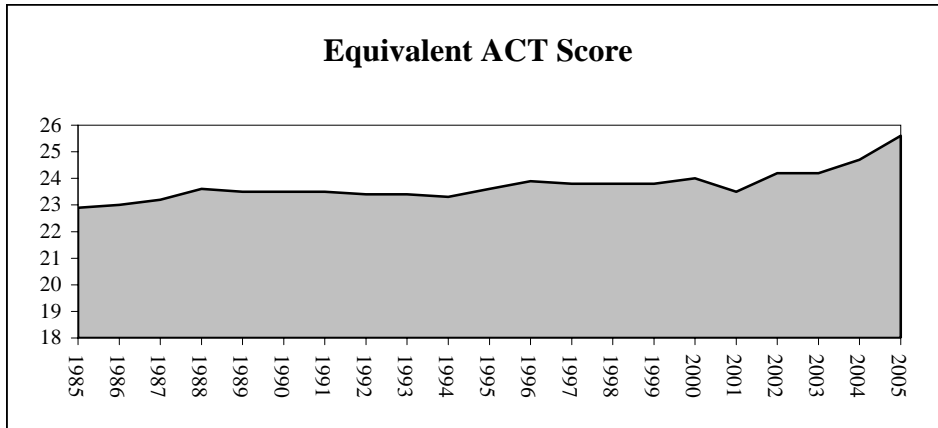
	1991	1992	1993	1994	1995	1996	1997	1998	1999	2000	2001	2002	2003	2004*	2005*
<b>Equivalent ACT</b>															
Number	2,989	3,160	2,960	2,867	3,458	3,649	3,851	3,781	4,132	3,818	3,932	3,662	3,556	4,394	4,148
Average	23.5	23.4	23.4	23.3	23.6	23.9	23.8	23.8	23.8	24.0	23.5	24.2	24.2	24.7	25.6
<b>ACT Composite</b>															
Number	2,611	2,742	2,618	2,539	3,067	3,240	3,356	3,294	3,581	3,303	3,411	3,138	3,086	3,859	3,731
Average	23.3	23.2	23.1	23.1	23.4	23.6	23.6	23.6	23.6	23.9	23.4	24.0	24.1	24.7	25.4
<b>SAT Total</b>															
Number	1,370	1,439	1,287	1,181	1,478	1,665	1,771	1,734	1,829	1,741	1,714	1,699	1,634	1,947	1,763
Average	1,093	1,089	1,095	1,097	1,106	1,113	1,101	1,104	1,103	1,113	1,092	1,110	1,116	1,113	1,157
<b>High School GPA</b>															
Number	3,026	3,172	2,982	2,896	3,473	3,657	3,869	3,777	4,131	3,818	3,932	3,666	3,567	4,404	3,597
Average	3.11	3.14	3.17	3.16	3.22	3.24	3.26	3.29	3.34	3.35	3.31	3.38	3.40	3.45	3.56
3.50 - 4.00	783	890	911	890	1,142	1,212	1,398	1,459	1,748	1,612	1,677	1,714	1,640	2,179	2,155
3.00 - 3.49	1,001	1,001	955	929	1,143	1,050	1,284	1,255	1,377	1,335	1,214	1,113	1,123	1,457	992
2.50 - 2.99	844	919	788	739	876	716	921	853	814	699	751	633	635	637	389
2.00 - 2.49	388	346	314	329	299	250	255	208	189	168	266	182	157	123	59
< 2.00	10	16	14	9	13	0	11	2	3	4	24	24	12	8	2
<b>High School Percentile Ranking</b>															
Number	2,295	2,379	2,139	2,003	2,322	2,149	2,079	2,055	2,096	1,962	3,257	2,930	2,778	3,104	2,161
Average	74	73	73	71	71	71	71	72	72	72	70	72	72	74	77
76 - 99	1,257	1,267	1,151	970	1,154	1,106	1,045	1,054	1,088	1,035	1,647	1,579	1,485	1,747	1,363
51 - 75	701	707	627	639	745	653	637	613	657	594	983	845	839	917	582
26 - 50	294	331	305	332	364	320	338	327	291	276	480	409	383	371	185
1 - 25	43	74	56	62	59	70	59	61	60	57	147	97	71	69	31

SOURCE: Student Information System and Student Record Master

NOTE: Equivalent ACT scores are based on the higher of ACT composite or SAT total converted to ACT

\*Beginning in 2004 a "super score" is used for the Composite ACT with the score based on the highest score of individual components

## Average Equivalent ACT Scores, High School GPA And Class Ranking for First-Time Freshmen Fall 1985-2005



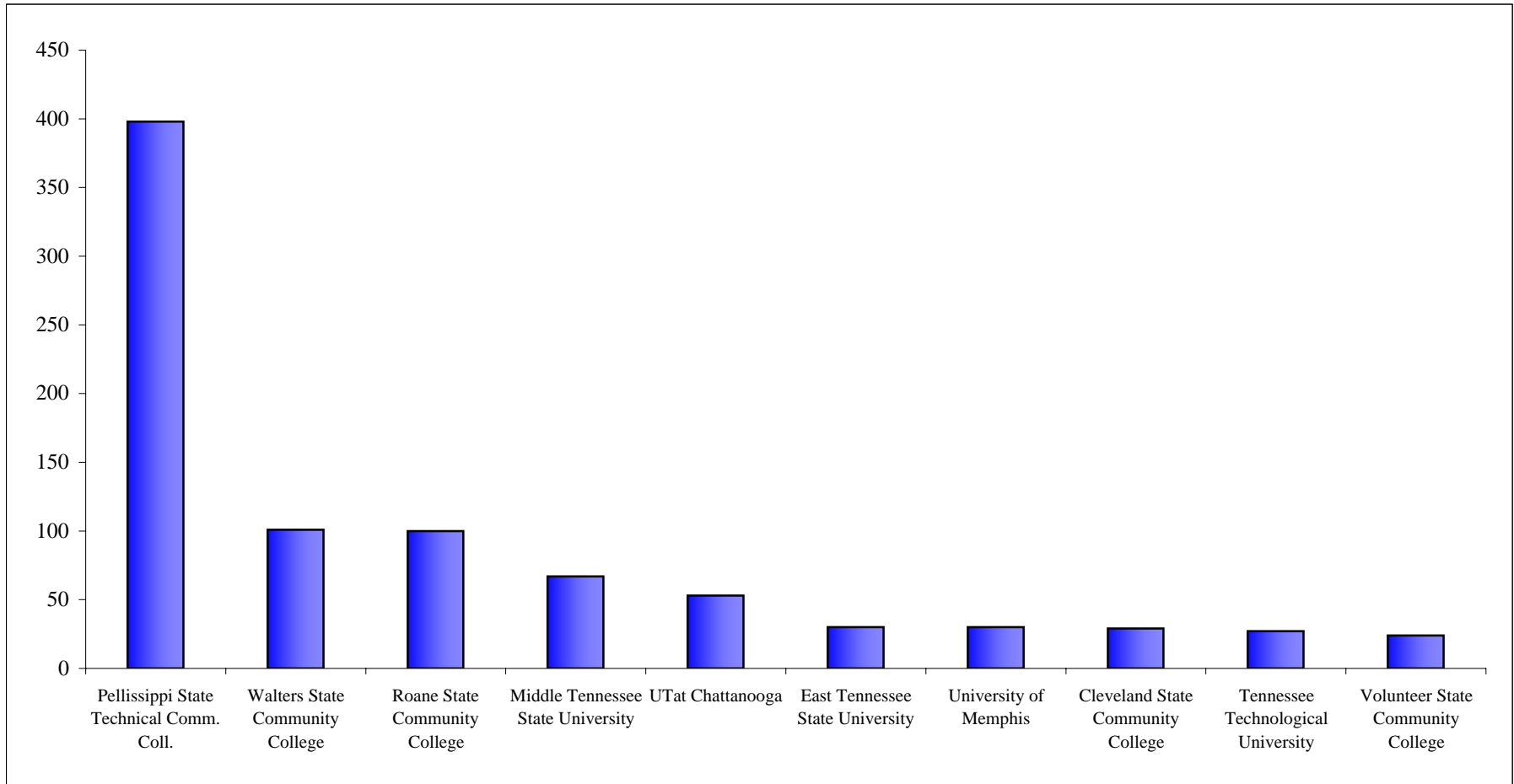
SOURCES: Student Information System and Student Record Master

## Undergraduate Transfer Headcount Enrollment By College, Race, and Gender Fall 2005

	TOTAL			AMERICAN INDIAN			ASIAN			BLACK			HISPANIC			WHITE			NOT REPORTED		
	Total	Men	Women	Total	Men	Women	Total	Men	Women	Total	Men	Women	Total	Men	Women	Total	Men	Women	Total	Men	Women
<b>TOTAL</b>	<b>1,564</b>	<b>777</b>	<b>787</b>	<b>10</b>	<b>5</b>	<b>5</b>	<b>57</b>	<b>27</b>	<b>30</b>	<b>94</b>	<b>39</b>	<b>55</b>	<b>32</b>	<b>12</b>	<b>20</b>	<b>1,366</b>	<b>690</b>	<b>676</b>	<b>5</b>	<b>4</b>	<b>1</b>
<b>COLLEGE</b>																					
Agricultural Sciences & Natural Resources	58	36	22	0	0	0	1	1	0	0	0	0	0	0	0	57	35	22	0	0	0
Architecture & Design	16	5	11	0	0	0	1	1	0	1	1	0	0	0	0	14	3	11	0	0	0
Arts & Sciences	579	267	312	5	2	3	23	12	11	33	13	20	13	5	8	504	234	270	1	1	0
Business Administration	169	94	75	1	1	0	8	2	6	5	3	2	4	1	3	149	86	63	2	1	1
Communication & Information	70	25	45	1	0	1	1	0	1	10	3	7	3	0	3	55	22	33	0	0	0
Education, Health & Human Sciences	101	32	69	2	1	1	1	0	1	3	3	0	4	2	2	91	26	65	0	0	0
Engineering	83	76	7	0	0	0	3	3	0	3	2	1	1	1	0	75	69	6	1	1	0
Health Science Center	59	6	53	0	0	0	2	1	1	10	1	9	0	0	0	47	4	43	0	0	0
Nursing	63	12	51	0	0	0	1	0	1	5	0	5	2	1	1	55	11	44	0	0	0
Social Work	16	2	14	0	0	0	1	0	1	3	0	3	0	0	0	12	2	10	0	0	0
University	350	222	128	1	1	0	15	7	8	21	13	8	5	2	3	307	198	109	1	1	0

SOURCE: Student Information System

## Undergraduate Transfer Headcount Enrollment Top Ten Feeder Institutions Fall 2005



SOURCE: Student Information System

NOTE: Includes Knoxville, Institute of Agriculture, Veterinary Medicine, Space Institute, and Health Science Center

**Applied, Admitted, and Enrolled  
Undergraduate Transfer Students  
Fall 1984-2005**

Year	Number Applied	Number Admitted	Percentage of Applicants Admitted	Number Enrolled	Percentage of Applicants Enrolled	Percentage of Admitted Enrolled
1984	2,287	1,699	74%	1,374	60%	81%
1985	2,003	1,489	74%	1,045	52%	70%
1986	2,119	1,603	76%	1,097	52%	68%
1987	1,882	1,350	72%	934	50%	69%
1988	2,080	1,461	70%	938	45%	64%
1989	2,235	1,615	72%	1,097	49%	68%
1990	2,576	1,837	71%	1,226	48%	67%
1991	2,662	1,868	70%	1,249	47%	67%
1992	2,725	1,938	71%	1,481	54%	76%
1993	2,898	2,084	72%	1,586	55%	76%
1994	2,956	2,141	72%	1,624	55%	76%
1995	2,830	1,987	70%	1,352	48%	68%
1996	2,784	1,991	72%	1,434	52%	72%
1997	2,554	1,829	72%	1,173	46%	64%
1998	2,489	1,730	70%	1,214	49%	70%
1999	2,647	1,826	69%	1,427	54%	78%
2000	2,479	1,754	71%	1,246	50%	71%
2001	2,208	1,727	78%	1,411	64%	82%
2002*	2,449	1,688	69%	1,372	56%	81%
2003*	2,319	1,652	71%	1,384	60%	84%
2004*	2,376	1,724	73%	1,159	49%	67%
2005*	2,796	1,996	71%	1,564	56%	78%

SOURCE: Office of Enrollment Services

\*Data for 2002 - 2005 include Knoxville, Institute of Agriculture, Veterinary Medicine, Space Institute, and Health Science Center

## Undergraduate Headcount Enrollment By Race and Gender Fall 1988-2005

YEAR	TOTAL			AMERICAN INDIAN			ASIAN			BLACK			HISPANIC			WHITE			NOT REPORTED		
	Total	Men	Women	Total	Men	Women	Total	Men	Women	Total	Men	Women	Total	Men	Women	Total	Men	Women	Total	Men	Women
1988	18,770	9,811	8,959	25	11	14	329	193	136	863	390	473	74	47	27	17,479	9,170	8,309	0	0	0
1989	19,067	9,891	9,176	26	14	12	339	196	143	900	422	478	94	51	43	17,708	9,208	8,500	0	0	0
1990	19,532	10,052	9,480	28	11	17	371	216	155	997	455	542	106	58	48	18,030	9,312	8,718	0	0	0
1991	19,385	9,951	9,434	33	16	17	452	268	184	1,033	469	564	103	55	48	17,764	9,143	8,621	0	0	0
1992	19,342	10,095	9,247	41	25	16	510	306	204	1,043	485	558	144	79	65	17,604	9,200	8,404	0	0	0
1993	18,986	9,770	9,216	52	28	24	543	312	231	990	453	537	157	83	74	17,244	8,894	8,350	0	0	0
1994	18,608	9,611	8,997	46	24	22	524	307	217	946	442	504	177	95	82	16,915	8,743	8,172	0	0	0
1995	18,735	9,470	9,265	53	27	26	571	324	247	864	404	460	179	98	81	17,068	8,617	8,451	0	0	0
1996	18,826	9,474	9,352	52	26	26	570	304	266	864	395	469	199	107	92	17,141	8,642	8,499	0	0	0
1997	19,061	9,520	9,541	55	33	22	637	335	302	972	447	525	210	116	94	17,187	8,589	8,598	0	0	0
1998	19,692	9,716	9,976	52	29	23	627	325	302	1,087	482	605	219	117	102	17,707	8,763	8,944	0	0	0
1999	20,259	9,912	10,347	64	31	33	604	315	289	1,196	501	695	234	125	109	18,161	8,940	9,221	0	0	0
2000	20,009	9,718	10,291	60	28	32	585	293	292	1,222	541	681	237	127	110	17,822	8,686	9,136	83	43	40
2001	20,124	9,736	10,388	64	26	38	592	313	279	1,310	559	751	249	123	126	17,775	8,649	9,126	134	66	68
2002*	19,956	9,710	10,246	76	32	44	630	307	323	1,399	584	815	263	131	132	17,383	8,560	8,823	205	96	109
2003*	19,224	9,392	9,832	66	27	39	573	280	293	1,423	605	818	239	122	117	16,713	8,255	8,458	210	103	107
2004*	19,639	9,635	10,004	81	41	40	588	315	273	1,568	674	894	274	138	136	16,940	8,374	8,566	188	93	95
2005*	20,232	9,886	10,346	85	40	45	673	335	338	1,772	728	1,044	318	145	173	17,254	8,569	8,685	130	69	61

SOURCE: Student Information System

\*Data for 2002 - 2005 include Knoxville, Institute of Agriculture, Veterinary Medicine, Space Institute, and Health Science Center

**First-Time Graduate and Professional Headcount Enrollment  
By College, Race, and Gender  
Fall 2005**

	TOTAL			AMERICAN INDIAN			ASIAN			BLACK			HISPANIC			WHITE			NOT REPORTED		
	Total	Men	Women	Total	Men	Women	Total	Men	Women	Total	Men	Women	Total	Men	Women	Total	Men	Women	Total	Men	Women
<b>TOTAL</b>	<b>1,803</b>	<b>795</b>	<b>1,008</b>	<b>6</b>	<b>2</b>	<b>4</b>	<b>166</b>	<b>107</b>	<b>59</b>	<b>135</b>	<b>40</b>	<b>95</b>	<b>26</b>	<b>8</b>	<b>18</b>	<b>1,417</b>	<b>610</b>	<b>807</b>	<b>53</b>	<b>28</b>	<b>25</b>
<b>COLLEGE</b>																					
Agricultural Sciences & Natural Resources	51	25	26	0	0	0	5	3	2	1	0	1	2	0	2	42	22	20	1	0	1
Architecture & Design	9	8	1	0	0	0	0	0	0	1	0	1	0	0	0	8	8	0	0	0	0
Arts & Sciences	381	179	202	1	0	1	42	25	17	13	5	8	6	2	4	308	142	166	11	5	6
Business Administration	202	127	75	1	1	0	17	9	8	7	4	3	3	0	3	171	110	61	3	3	0
Communication & Information	82	32	50	0	0	0	5	1	4	5	2	3	0	0	0	71	29	42	1	0	1
Education, Health & Human Sciences	255	79	176	1	0	1	12	8	4	17	6	11	2	0	2	220	65	155	3	0	3
Engineering	161	131	30	0	0	0	51	39	12	11	10	1	5	3	2	89	76	13	5	3	2
Health Science Center	93	40	53	0	0	0	25	17	8	10	1	9	3	1	2	52	19	33	3	2	1
Intercollegiate Programs	16	14	2	0	0	0	3	2	1	0	0	0	0	0	0	11	11	0	2	1	1
Law	158	79	79	0	0	0	3	2	1	18	7	11	1	1	0	126	60	66	10	9	1
Nursing	16	1	15	0	0	0	0	0	0	0	0	0	0	0	0	16	1	15	0	0	0
Social Work	172	23	149	1	0	1	1	0	1	46	3	43	2	0	2	117	18	99	5	2	3
Veterinary Medicine	70	15	55	0	0	0	1	1	0	0	0	0	1	0	1	65	14	51	3	0	3
University	137	42	95	2	1	1	1	0	1	6	2	4	1	1	0	121	35	86	6	3	3

SOURCE: Student Information System

NOTE: Includes Knoxville, Institute of Agriculture, Veterinary Medicine, Space Institute, and Health Science Center



## Graduate Headcount Enrollment By Race and Gender Fall 1988-2005

YEAR	TOTAL			AMERICAN INDIAN			ASIAN			BLACK			HISPANIC			WHITE			NOT REPORTED		
	Total	Men	Women	Total	Men	Women	Total	Men	Women	Total	Men	Women	Total	Men	Women	Total	Men	Women	Total	Men	Women
1988	5,620	2,857	2,763	19	8	11	352	260	92	304	111	193	65	42	23	4,880	2,436	2,444	0	0	0
1989	5,949	2,984	2,965	15	7	8	376	271	105	337	134	203	74	43	31	5,147	2,529	2,618	0	0	0
1990	5,882	3,034	2,848	16	7	9	416	291	125	320	129	191	76	44	32	5,054	2,563	2,491	0	0	0
1991	6,213	3,110	3,103	17	7	10	468	321	147	316	130	186	83	44	39	5,329	2,608	2,721	0	0	0
1992	6,656	3,282	3,374	17	10	7	476	326	150	371	146	225	82	37	45	5,710	2,763	2,947	0	0	0
1993	6,904	3,387	3,517	27	12	15	487	326	161	371	145	226	86	35	51	5,933	2,869	3,064	0	0	0
1994	6,804	3,324	3,480	27	13	14	471	305	166	374	151	223	79	36	43	5,853	2,819	3,034	0	0	0
1995	6,516	3,064	3,452	33	13	20	424	270	154	396	150	246	80	39	41	5,583	2,592	2,991	0	0	0
1996	6,260	2,875	3,385	31	15	16	412	264	148	352	111	241	65	34	31	5,400	2,451	2,949	0	0	0
1997	5,978	2,769	3,209	28	14	14	369	229	140	316	100	216	75	40	35	5,190	2,386	2,804	0	0	0
1998	5,919	2,677	3,242	22	8	14	397	245	152	327	109	218	76	38	38	5,097	2,277	2,820	0	0	0
1999	5,722	2,581	3,141	20	5	15	442	264	178	322	101	221	86	39	47	4,852	2,172	2,680	0	0	0
2000	5,465	2,356	3,109	17	4	13	498	284	214	318	102	216	75	28	47	4,542	1,933	2,609	15	5	10
2001	5,909	2,507	3,402	21	4	17	545	317	228	359	109	250	95	42	53	4,860	2,023	2,837	29	12	17
2002*	8,015	3,575	4,440	25	10	15	830	487	343	617	180	437	105	51	54	6,307	2,793	3,514	131	54	77
2003*	8,057	3,681	4,376	30	14	16	881	537	344	597	181	416	118	52	66	6,275	2,829	3,446	156	68	88
2004*	8,130	3,708	4,422	32	13	19	870	518	352	612	162	450	113	48	65	6,350	2,889	3,461	153	78	75
2005*	8,225	3,727	4,498	21	9	12	847	506	341	662	183	479	124	54	70	6,349	2,854	3,495	222	121	101

SOURCE: Student Information System

\*Data for 2002 - 2005 include Knoxville, Institute of Agriculture, Veterinary Medicine, Space Institute, and Health Science Center

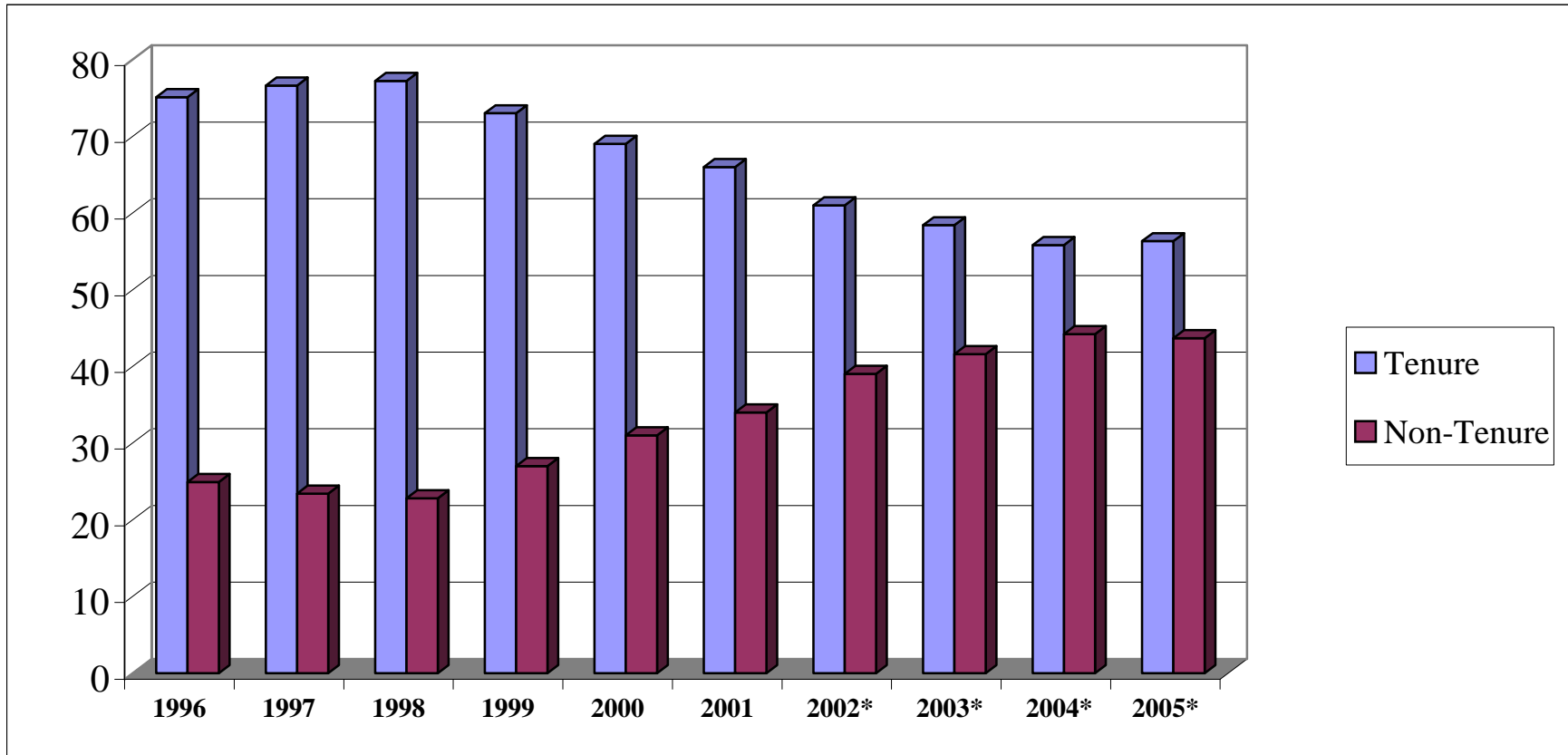
**Full-Time Instructional Faculty  
By Appointment Type, Rank, Tenure Status, and College  
Fall 2005**

	Number of Faculty	Appointment		Academic Rank					Tenure Status		
		9-Month	12-Month	Professor	Associate Professor	Assistant Professor	Instructor	Lecturer	Tenured	On-Track	Non-Tenured
<b>UNIVERSITY TOTAL</b>	<b>1,518</b>	<b>1,145</b>	<b>373</b>	<b>560</b>	<b>370</b>	<b>353</b>	<b>37</b>	<b>198</b>	<b>855</b>	<b>382</b>	<b>281</b>
<b>UNIVERSITY PERCENTAGES</b>	<b>100.0</b>	<b>75.4</b>	<b>24.6</b>	<b>36.9</b>	<b>24.4</b>	<b>23.3</b>	<b>2.4</b>	<b>13.0</b>	<b>56.3</b>	<b>25.2</b>	<b>18.5</b>
Agricultural Sciences & Natural Resources	102	4	98	52	26	21	3	0	74	25	3
Architecture & Design	28	25	3	8	11	2	0	7	17	4	7
Arts & Sciences - Humanities	264	263	1	72	55	51	0	86	125	51	88
Arts & Sciences - Natural Sciences	218	203	15	107	27	45	1	38	134	44	40
Arts & Sciences - Social Sciences	149	148	1	50	34	35	0	30	79	40	30
Business Administration	101	101	0	38	26	18	2	17	62	19	20
Communication & Information	58	54	4	15	17	15	1	10	34	14	10
Education, Health & Human Sciences	129	119	10	51	26	41	3	8	71	45	13
Engineering	143	139	4	70	41	28	3	1	96	37	10
Health Science Center (Non-Medical)	137	0	137	44	43	40	10	0	66	50	21
Law	32	28	4	15	17	0	0	0	25	7	0
Nursing	38	37	1	3	7	17	11	0	9	12	17
Social Work	26	24	2	7	10	9	0	0	16	9	1
Veterinary Medicine	93	0	93	28	30	31	3	1	47	25	21

SOURCE: IRIS

NOTE: Includes Knoxville, Institute of Agriculture, Veterinary Medicine, Space Institute, and Health Science Center

**Tenured and Non-Tenured Full-Time Instructional Faculty  
Fall 1996-2005  
(As Percentages)**



Source: IRIS

\*Data for 2002 - 2005 include Knoxville, Institute of Agriculture, Veterinary Medicine, Space Institute, and Health Science Center

**Full-Time Instructional Faculty  
By Gender, Highest Degree Held, and Race  
Fall 2005**

	Number of Faculty	GENDER		HIGHEST DEGREE HELD					RACE				
		Male	Female	PhD	Profes- sional	MA	BA	HS	American Indian	Asian	Black	Hispanic	White
<b>UNIVERSITY TOTAL</b>	<b>1,518</b>	<b>972</b>	<b>546</b>	<b>1,091</b>	<b>145</b>	<b>264</b>	<b>16</b>	<b>2</b>	<b>3</b>	<b>124</b>	<b>68</b>	<b>30</b>	<b>1,293</b>
<b>UNIVERSITY PERCENTAGES</b>	<b>100.0</b>	<b>64.0</b>	<b>36.0</b>	<b>71.9</b>	<b>9.6</b>	<b>17.4</b>	<b>1.1</b>	<b>0.1</b>	<b>0.2</b>	<b>8.2</b>	<b>4.5</b>	<b>2.0</b>	<b>85.2</b>
Agricultural Sciences & Natural Resources	102	86	16	95	0	7	0	0	0	8	2	0	92
Architecture & Design	28	19	9	6	0	19	3	0	0	1	1	0	26
Arts & Sciences - Humanities	264	140	124	162	1	96	4	1	0	10	13	14	227
Arts & Sciences - Natural Sciences	218	176	42	196	0	22	0	0	1	26	1	6	184
Arts & Sciences - Social Sciences	149	96	53	140	0	8	1	0	0	8	5	1	135
Business Administration	101	75	26	89	1	10	1	0	0	8	2	1	90
Communication & Information	58	26	32	45	0	11	2	0	0	4	1	2	51
Education, Health & Human Sciences	129	54	75	98	2	29	0	0	1	8	8	0	112
Engineering	143	134	9	138	1	3	1	0	0	35	4	1	103
Health Science Center (Non-Medical)	137	69	68	49	52	31	4	1	0	10	16	2	109
Law	32	20	12	3	24	5	0	0	0	0	3	0	29
Nursing	38	3	35	19	2	17	0	0	0	1	2	0	35
Social Work	26	14	12	21	0	5	0	0	0	0	5	0	21
Veterinary Medicine	93	60	33	30	62	1	0	0	1	5	5	3	79

SOURCE: IRIS

NOTE: Includes Knoxville, Institute of Agriculture, Veterinary Medicine, Space Institute, and Health Science Center

**Age and Length of Service of Full-Time Instructional Faculty  
Fall 1997-2005  
(As Percentages)**

Age Distribution	Fall 1997	Fall 1998	Fall 1999	Fall 2000	Fall 2001	Fall 2002*	Fall 2003*	Fall 2004*	Fall 2005*
< 30	1.0	0.6	1.0	1.4	1.6	1.9	1.7	1.6	1.5
30-39	15.6	15.5	12.8	13.4	14.2	17.2	17.8	19.6	19.2
40-49	31.4	32.0	31.4	31.9	31.2	28.8	27.3	26.3	26.8
50-59	32.6	33.6	35.4	34.4	34.7	33.5	33.3	31.7	32.0
60-65	14.4	14.0	14.7	14.1	14.1	14.1	15.0	15.2	14.5
> 65	5.0	4.2	4.7	4.7	4.3	4.5	5.0	5.6	6.2

Length of Service	Fall 1997	Fall 1998	Fall 1999	Fall 2000	Fall 2001	Fall 2002*	Fall 2003*	Fall 2004*	Fall 2005*
0 - 4	19.1	19.0	16.3	19.2	17.1	31.3	32.3	33.3	34.1
5 - 9	17.5	17.5	18.7	18.7	18.6	13.5	13.0	14.6	14.6
10 - 14	12.7	13.5	14.6	13.7	15.3	13.2	13.9	13.5	13.0
15 - 19	12.5	12.2	11.9	11.4	11.6	10.7	11.0	9.8	10.1
>19	38.3	37.8	38.4	37.0	37.4	31.2	29.8	28.8	28.2

SOURCE: IRIS

\*Data for 2002 - 2005 include Knoxville, Institute of Agriculture, Veterinary Medicine, Space Institute and Health Science Center

**Distribution of Employees  
By EEO Category  
Fall 2005**

EEO CATEGORY	TOTAL NUMBER	MALE		FEMALE		BLACK		WHITE		TOTAL MINORITY	
		#	%	#	%	#	%	#	%	#	%
<b>UNIVERSITY TOTALS</b>	<b>13,883</b>	<b>6,657</b>	<b>47.95</b>	<b>7,299</b>	<b>52.58</b>	<b>1,625</b>	<b>11.70</b>	<b>11,492</b>	<b>82.78</b>	<b>2,465</b>	<b>17.76</b>
<b>EXECUTIVE/ADMINISTRATIVE/MANAGERIAL</b>	<b>622</b>	<b>339</b>	<b>54.50</b>	<b>283</b>	<b>45.50</b>	<b>54</b>	<b>8.68</b>	<b>562</b>	<b>90.35</b>	<b>60</b>	<b>9.65</b>
Executive	107	75	70.09	32	29.91	10	9.35	96	89.72	11	10.28
Administrative	515	264	51.26	251	48.74	44	8.54	466	90.49	49	9.51
<b>FACULTY</b>	<b>2,964</b>	<b>2,028</b>	<b>68.42</b>	<b>1,009</b>	<b>34.04</b>	<b>123</b>	<b>4.15</b>	<b>2,574</b>	<b>86.84</b>	<b>463</b>	<b>15.62</b>
Professor	959	794	82.79	165	17.21	19	1.98	869	90.62	90	9.38
Associate Professor	733	498	67.94	235	32.06	32	4.37	635	86.63	98	13.37
Assistant Professor	792	479	60.48	313	39.52	49	6.19	596	75.25	196	24.75
Instructor	72	69	95.83	76	105.56	11	15.28	118	163.89	27	37.50
Lecturer	384	171	44.53	213	55.47	12	3.13	345	89.84	39	10.16
Other Faculty	24	17	70.83	7	29.17	0	0.00	11	45.83	13	54.17
<b>PROFESSIONAL</b>	<b>3,220</b>	<b>1,288</b>	<b>40.00</b>	<b>1,932</b>	<b>60.00</b>	<b>233</b>	<b>7.24</b>	<b>2,694</b>	<b>83.66</b>	<b>527</b>	<b>16.37</b>
Professional	3,220	1,288	40.00	1,932	60.00	233	7.24	2,694	83.66	527	16.37
<b>SECRETARIAL/CLERICAL</b>	<b>2,787</b>	<b>304</b>	<b>10.91</b>	<b>2,483</b>	<b>89.09</b>	<b>545</b>	<b>19.56</b>	<b>2,203</b>	<b>79.05</b>	<b>584</b>	<b>20.95</b>
Supervisory	82	35	42.68	47	57.32	13	15.85	67	81.71	15	18.29
Non-Supervisory	2,705	269	9.94	2,436	90.06	532	19.67	2,136	78.96	569	21.04
<b>TECHNICAL/PARAPROFESSIONAL</b>	<b>1,236</b>	<b>485</b>	<b>39.24</b>	<b>751</b>	<b>60.76</b>	<b>172</b>	<b>13.92</b>	<b>966</b>	<b>78.16</b>	<b>270</b>	<b>21.84</b>
Supervisory	28	15	53.57	13	46.43	4	14.29	23	82.14	5	17.86
Non-Supervisory	1,208	470	38.91	738	61.09	168	13.91	943	78.06	265	21.94
<b>SKILLED CRAFTS</b>	<b>493</b>	<b>474</b>	<b>96.15</b>	<b>19</b>	<b>3.85</b>	<b>35</b>	<b>7.10</b>	<b>454</b>	<b>92.09</b>	<b>39</b>	<b>7.91</b>
Supervisory	64	64	100.00	0	0.00	5	7.81	58	90.63	6	9.38
Non-Supervisory	429	410	95.57	19	4.43	30	6.99	396	92.31	33	7.69
<b>SERVICE MAINTENANCE</b>	<b>2,561</b>	<b>1,739</b>	<b>67.90</b>	<b>822</b>	<b>32.10</b>	<b>463</b>	<b>18.08</b>	<b>2,039</b>	<b>79.62</b>	<b>522</b>	<b>20.38</b>
Supervisory	116	74	63.79	42	36.21	40	34.48	76	65.52	40	34.48
Non-Supervisory	2,445	1,665	68.10	780	31.90	423	17.30	1,963	80.29	482	19.71

SOURCE: IRIS

NOTE: Includes Knoxville, Institute of Agriculture, Veterinary Medicine, Space Institute, Health Science Center, and clinical programs

## Chairs of Excellence As of October 2005

CHAIR NAME	CHAIRHOLDER	CHAIR NAME	CHAIRHOLDER
<b>Knoxville</b>		<b>Health Science Center</b>	
Ivan Racheff Chair of Plant Molecular Genetics	Dr. Neal Stewart	Harriet S. Van Vleet Chair in Microbiology and Immunology	Dr. Terrence G. Cooper
Ivan Racheff Chair of Materials Science & Engineering	Dr. Peter K. Liaw	Harriet S. Van Vleet Chair in Pharmacology	Dr. Burt M. Sharp
Hodges Chair of English		Harriet S. Van Vleet Chair in Biochemistry	Dr. John N. Fain
Condra Chair of Computer Integrated Engineering & Manufacturing	vacant	Harriet S. Van Vleet Chair in Virology	Dr. Martha M. Howe
Condra Chair of Power Electronics Applications	vacant	E. Eric Muirhead Chair in Pathology	Dr. Lawrence Pfeffer
Goodrich Chair in Waste Management & Environmental Engineering	Dr. Thomas Urbanik, III	Crippled Children's Hospital Foundation Chair in Biomedical Engineering	Dr. Frank A. DiBianca
J. Fred Holly Chair in Political Economy	vacant	UT Medical Group Chair in Obstetrics and Gynecology	Dr. Veronica Mallett
Bernadotte E. Schmitt Chair of History	Dr. Robert J. Norrell	LeBonheur Chair in Pediatrics	Dr. Russell W. Chesney
Chair of Science, Technology & Medical Writing	Dr. Mark Littmann	LeBonheur Chair in Pediatrics (Second Chair)	Dr. James W. Wheless
Forrest & Patsy Shumway Chair in Romance Language	Dr. Patrick Brady	Plough Foundation Chair in Pediatrics	Dr. Bruce S. Alpert
Pilot Chair in Leadership	Dr. Jan R. Williams	J.R. Hyde Chair in Rehabilitation Engineering	Dr. Joo L. Ong
Clayton Homes Chair in Finance	Dr. James Wansley	Thomas A. Gerwin Chair in Physiology	Dr. Leonard R. Johnson
Bruce Chair of Excellence in Business Policy	Dr. John T. Mentzer	First Tennessee Chair in Clinical Pharmacy & Pediatrics	Dr. William E. Evans
Bernard Blasingame Chair in Agricultural Policy	Dr. Daryll E. Ray	William & Dorothy Dunavant Chair in Pediatrics	Dr. Robert Williams
UTK Willis Lincoln Chair in Physics	Dr. John Quinn	Federal Express Chair in Pediatrics	Dr. Mary Ellen Conley
Nancy Gore Hunger Chair in Environmental Studies	Dr. Daniel Simberloff	Semmes-Murphey Chair in Neurology	Dr. William A. Pulsinelli
		Maury W. Bronstein Chair in Cardiovascular Physiology	Dr. Aviv Isaak Hassid
<b>Space Institute</b>		Goodman Chair in Medicine	Dr. Andrew H. Kang
Edward J. and Carolyn P. Boling Chair of Space Propulsion	Dr. Gary A. Flandro	Mark S. Soloway Chair of Excellence in Urology	Dr. Mitchell S. Steiner
H. H. Arnold Chair of Computational Mechanics	vacant		

SOURCE: Office of the Vice President for Research

**Unrestricted Expenditures and Transfers  
By Budgetary Function  
With Percent Distribution of Expenditures  
FY 2001-2006**

	ACTUAL					BUDGET
	FY 2001	FY 2002*	FY 2003*	FY 2004*	FY 2005*	FY 2006*
<b>TOTAL UNRESTRICTED CURRENT FUNDS</b>						
<b>EXPENDITURES &amp; TRANSFERS</b>	<b>421,966,402</b>	<b>794,335,522</b>	<b>773,589,156</b>	<b>775,865,473</b>	<b>814,860,971</b>	<b>843,095,200</b>
<b>TOTAL EDUCATION &amp; GENERAL EXPENDITURES</b>	<b>311,174,878</b>	<b>607,338,685</b>	<b>651,768,973</b>	<b>660,901,900</b>	<b>689,091,171</b>	<b>723,165,459</b>
<b>TRANSFERS (IN)/OUT</b>	<b>9,428,665</b>	<b>18,647,610</b>	<b>(14,046,337)</b>	<b>(6,954,337)</b>	<b>(1,158,570)</b>	<b>(1,461,543)</b>
<b>TOTAL EDUCATION &amp; GENERAL</b>	<b>320,603,543</b>	<b>625,986,295</b>	<b>637,722,636</b>	<b>653,947,563</b>	<b>687,932,601</b>	<b>721,703,916</b>
<b>AUXILIARY ENTERPRISES FUNDS</b>	<b>101,362,859</b>	<b>113,550,871</b>	<b>119,255,869</b>	<b>119,841,136</b>	<b>125,301,810</b>	<b>121,391,284</b>
<b>WILLIAM F. BOWLD HOSPITAL</b>		<b>54,798,356</b>	<b>16,610,651</b>	<b>2,076,774</b>	<b>1,626,560</b>	
<b>EDUCATION &amp; GENERAL</b>						
Instruction	151,998,747	292,370,372	306,782,366	304,398,198	316,428,058	340,111,423
Research	16,088,550	50,393,860	53,731,090	53,872,734	57,262,090	58,780,027
Public Service	8,447,752	44,586,464	47,301,086	51,836,967	51,218,191	54,980,784
Academic Support	38,697,879	64,826,315	74,024,791	72,296,395	78,131,341	78,219,850
Student Services	27,618,852	31,308,986	35,259,383	40,197,851	42,026,750	39,149,756
Institutional Support	18,990,133	46,816,694	49,367,043	48,252,159	48,672,386	49,302,834
Operation and Maintenance of Physical Plant	34,650,354	54,797,869	59,990,303	64,547,886	65,394,547	65,214,313
Scholarship/Fellowship	14,682,611	22,238,125	25,312,911	25,499,710	29,957,808	37,406,472
<b>EXPENSES AS A PERCENT OF TOTAL</b>						
<b>EDUCATION &amp; GENERAL</b>						
Instruction	47.4%	46.7%	48.1%	46.5%	46.0%	47.1%
Research	5.0%	8.1%	8.4%	8.2%	8.3%	8.1%
Public Service	2.6%	7.1%	7.4%	7.9%	7.4%	7.6%
Academic Support	12.1%	10.4%	11.6%	11.1%	11.4%	10.8%
Student Services	8.6%	5.0%	5.5%	6.1%	6.1%	5.4%
Institutional Support	5.9%	7.5%	7.7%	7.4%	7.1%	6.8%
Operation & Maintenance of Physical Plant	10.8%	8.8%	9.4%	9.9%	9.5%	9.0%
Scholarship/Fellowship	4.6%	3.6%	4.0%	3.9%	4.4%	5.2%

SOURCE: Office of the Director of Finance

\*Data for 2002 - 2006 include Knoxville, Institute of Agriculture, Veterinary Medicine, Space Institute and Health Science Center



**Unrestricted Current Revenue  
By Budgetary Function and Revenue Dollars  
Per Full-Time Equivalent Student  
FY 2001-2006**

	ACTUAL					BUDGET
	FY 2001	FY 2002*	FY 2003*	FY 2004*	FY 2005*	FY 2006*
<b>TOTAL REVENUE</b>	<b>421,966,402</b>	<b>794,335,523</b>	<b>773,589,153</b>	<b>769,954,584</b>	<b>817,557,098</b>	<b>836,050,596</b>
<b>TOTAL EDUCATION &amp; GENERAL REVENUE</b>	<b>320,603,544</b>	<b>625,986,296</b>	<b>637,722,633</b>	<b>651,853,584</b>	<b>691,444,137</b>	<b>714,797,695</b>
<b>TOTAL AUXILIARY REVENUE</b>	<b>101,362,858</b>	<b>113,550,871</b>	<b>119,255,869</b>	<b>119,001,026</b>	<b>124,627,428</b>	<b>121,252,901</b>
<b>TOTAL WILLIAM F. BOWLD HOSPITAL</b>		<b>54,798,356</b>	<b>16,610,651</b>	<b>(900,026)</b>	<b>1,485,533</b>	
<b>EDUCATION &amp; GENERAL REVENUE</b>						
Tuition and Fees	127,214,919	166,396,798	173,834,646	184,826,672	200,370,783	220,447,423
Federal Appropriations		13,760,810	11,839,020	15,409,299	11,651,832	13,817,764
State Appropriations	164,044,500	336,449,800	339,902,200	337,115,600	357,045,200	365,081,300
Local Appropriations		3,871,849	3,889,156	3,946,132	4,053,048	4,205,018
Federal Gifts, Grants and Contracts	8,361,816	40,476,127	42,233,070	42,848,219	46,879,182	43,312,001
State Gifts, Grants and Contracts	3,389,705	10,056,703	9,766,464	9,286,616	10,889,005	11,286,120
Local Gifts, Grants and Contracts	38,803	8,485,231	8,337,407	5,324,080	6,689,782	7,522,177
Private Gifts, Grants and Contracts	1,956,480	3,417,503	3,674,624	3,945,089	4,517,889	4,196,408
Gifts	649,719	701,090	619,391	739,723	707,833	687,500
Endowment Income	32,279	31,726	30,378	27,540	24,564	42,000
Sale and Service of Educational Activities	5,671,089	34,248,144	34,617,517	35,910,690	37,279,052	36,119,386
Other Sources	9,244,234	8,090,515	8,978,760	12,473,924	11,335,967	8,080,598
<b>REVENUE DOLLARS PER FULL-TIME EQUIVALENT (FTE) STUDENT</b>						
Revenue dollars per FTE Student	18,522	34,264	30,780	30,556	32,436	30,933
Education and General Revenue dollars per FTE Student	14,073	27,002	25,374	25,869	27,433	26,447
State Appropriation dollars per FTE Student	7,201	14,513	13,524	13,379	14,166	13,508
Number of FTE Students	22,782	23,183	25,133	25,198	25,205	27,028

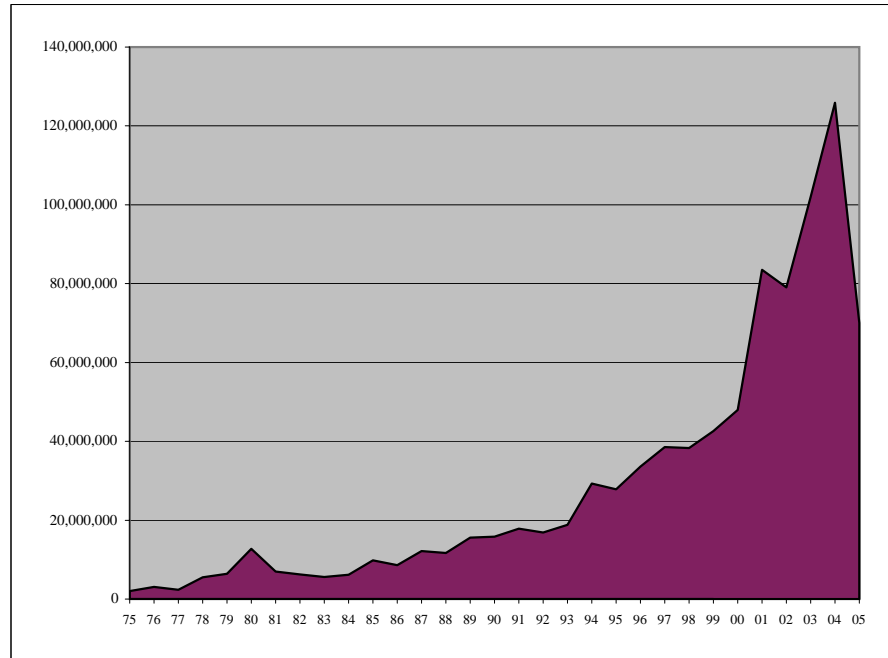
SOURCE: Office of the Director of Finance

NOTES: Endowment Income only includes income from Land Grant Endowment. Income from endowments created by private gifts are credited to the University of Tennessee System. Beginning in FY 2001, Gifts are reported separately from Grants and Contracts.

\*Data for 2002 - 2006 include Knoxville, Institute of Agriculture, Veterinary Medicine, Space Institute and Health Science Center

## Number of Contributors and Gifts FY 1977-2005

FISCAL YEAR	NUMBER OF DONORS	AMOUNT RAISED	AVERAGE GIFT
1976-77	N/A	2,318,564	N/A
1977-78	7,395	5,504,777	744
1978-79	7,754	6,434,738	830
1979-80	7,392	12,716,283	1,720
1980-81	8,224	6,997,761	851
1981-82	8,879	6,279,800	707
1982-83	8,926	5,608,056	628
1983-84	9,304	6,196,738	666
1984-85	10,364	9,826,048	948
1985-86	14,721	8,597,822	584
1986-87	19,947	12,133,924	608
1987-88	21,201	11,727,440	553
1988-89	21,227	15,581,262	734
1989-90	21,815	15,837,319	726
1990-91	23,359	17,876,619	765
1991-92	26,661	16,913,594	616
1992-93	27,701	18,807,636	679
1993-94	28,562	29,303,723	1,026
1994-95	31,621	27,861,586	881
1995-96	33,054	33,621,901	1,017
1996-97	33,026	38,536,237	1,167
1997-98	33,911	38,319,362	1,130
1998-99	37,117	42,583,818	1,147
1999-00	35,069	48,004,161	1,369
2000-01	46,546	83,519,546	1,794
2001-02	43,625	79,075,888	1,813
2002-03	45,142	102,015,719	2,260
2003-04	46,515	125,915,119	2,707
2004-05	42,731	70,021,988	1,639



SOURCE: Development Office

**Average Salaries of Full-Time Instructional Faculty  
By College and Rank  
FY 2005-2006**

COLLEGE / SCHOOL	ALL RANKS	PROFESSOR	ASSOCIATE PROFESSOR	ASSISTANT PROFESSOR	INSTRUCTOR	LECTURER
<b>ALL COLLEGES</b>	<b>72,163</b>	<b>94,772</b>	<b>71,639</b>	<b>59,584</b>	<b>47,098</b>	<b>36,309</b>
Agricultural Science and Natural Resources	72,510	85,082	64,849	55,451	40,414	
Architecture & Design	67,678	86,427	70,802	*		44,233
Arts and Sciences - Humanities	53,819	79,500	59,107	48,584		32,041
Arts and Sciences - Natural Sciences	77,559	100,737	74,228	60,333	*	35,447
Arts and Sciences - Social Sciences	61,544	83,202	64,229	51,705		33,881
Business Administration	99,470	125,892	97,217	86,266	*	61,028
Communication & Information	61,675	90,498	63,240	51,619	*	32,020
Education, Health & Human Sciences	68,397	86,512	64,267	56,233	35,162	41,145
Engineering	86,276	99,964	76,450	71,032	61,514	*
Health Science Center	75,651	93,225	73,600	65,728	46,837	
Law	112,287	134,727	92,487			
Nursing	58,766	86,960	67,166	58,825	45,639	
Social Work	72,452	108,333	64,290	53,615		
Veterinary Medicine	76,429	92,877	78,149	65,096	34,415	*

SOURCE: IRIS

\*If less than three individuals, salaries are not reported

NOTE: Includes Knoxville, Institute of Agriculture, Veterinary Medicine, Space Institute, and Health Science Center

**Median Graduate Assistant Stipends  
FY 1984-2006**

FY	TOTAL ASSISTANTSHIPS		GRADUATE TEACHING ASSOCIATE		GRADUATE TEACHING ASSISTANT		GRADUATE RESEARCH ASSISTANT		GRADUATE ASSISTANT	
	Number of Students	Median Stipend	Number of Students	Median Stipend	Number of Students	Median Stipend	Number of Students	Median Stipend	Number of Students	Median Stipend
1983-84	1,177	4,801	5	5,073	599	4,908	199	6,340	374	3,976
1984-85	1,251	5,497	3	7,674	642	5,723	181	7,068	425	4,574
1985-86	1,343	5,778	2	6,399	680	6,062	198	7,323	463	4,886
1986-87	1,432	6,281	6	5,856	682	6,497	265	6,871	479	5,130
1987-88	1,468	6,535	178	6,846	541	6,697	309	6,953	440	5,335
1988-89	1,581	6,773	193	7,120	553	6,847	279	6,891	556	5,870
1989-90	1,659	7,095	212	7,405	571	7,121	351	7,821	525	5,884
1990-91	1,755	7,620	227	8,265	550	7,651	407	8,259	571	6,618
1991-92	1,727	7,697	247	7,701	542	7,721	440	8,180	498	6,577
1992-93	1,809	7,712	247	7,701	584	7,719	424	8,834	554	6,577
1993-94	1,881	8,077	276	8,247	606	8,005	445	9,652	554	7,041
1994-95	1,928	8,805	336	8,923	585	9,006	426	10,144	581	7,470
1995-96	1,855	8,666	317	8,922	558	8,624	388	9,829	592	7,323
1996-97	1,786	8,926	320	9,230	554	9,386	388	10,110	524	7,282
1997-98	1,731	9,028	307	9,231	557	9,434	354	10,161	513	7,455
1998-99	1,777	9,462	329	9,686	550	9,045	364	11,119	534	7,438
1999-00	1,780	9,956	316	10,074	591	10,196	347	11,583	526	7,730
2000-01	1,762	10,347	285	10,299	584	10,425	338	12,191	555	8,027
2001-02	1,879	11,979	290	12,001	622	11,823	355	12,948	612	8,366
2002-03	2,113	11,993	298	12,005	636	11,989	511	12,577	668	10,010
2003-04	2,217	12,224	306	12,310	681	12,240	573	13,016	657	9,791
2004-05	2,211	12,576	323	12,638	697	12,950	604	13,410	587	9,816
2005-06	2,202	12,800	298	13,094	714	13,338	623	13,742	567	10,110

SOURCE: IRIS

NOTE: Stipends are equated to a half-time (20-hour week) academic year salary

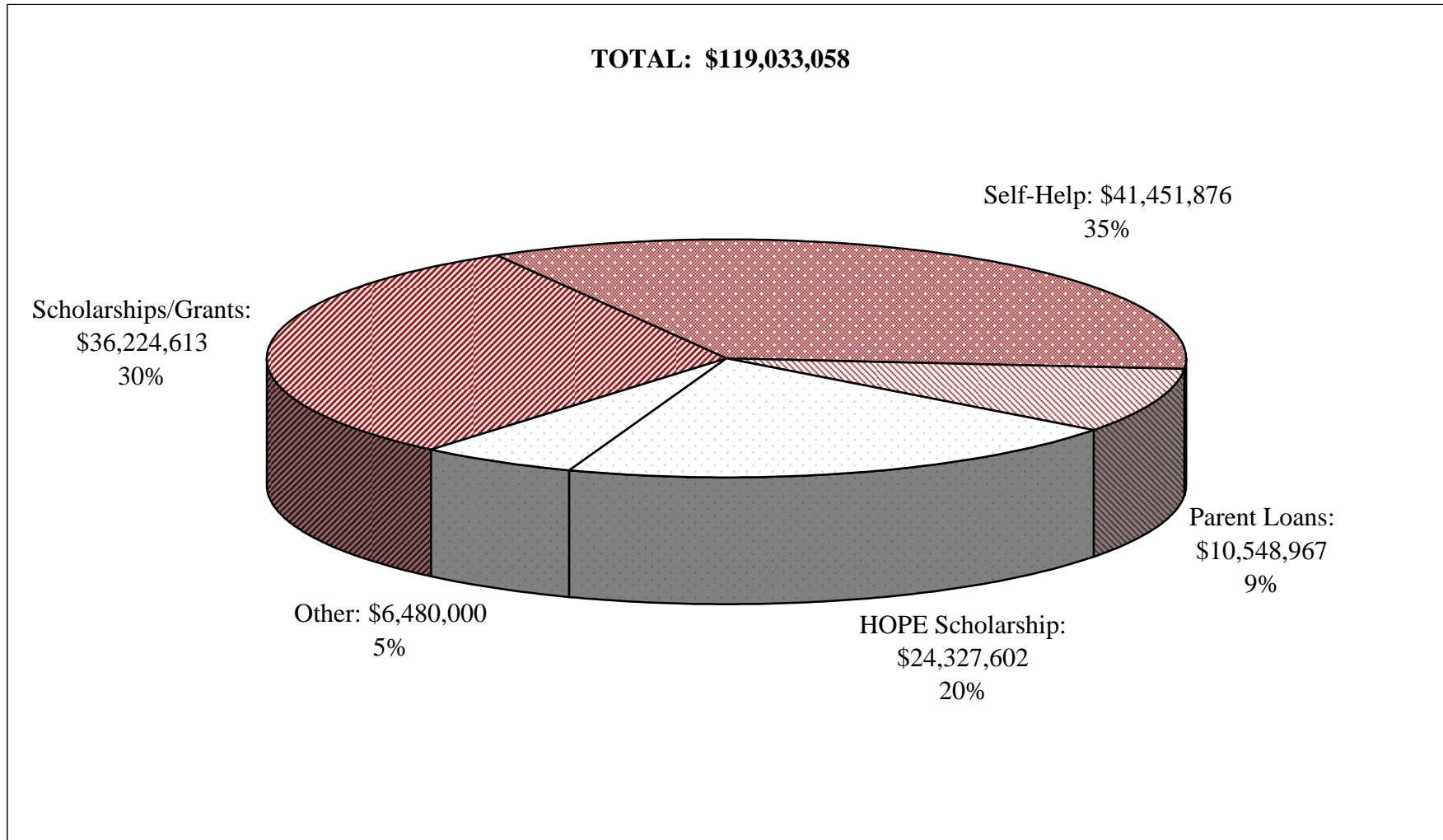
**Student Tuition  
By Level  
Academic Year 2005-2006**

	IN-STATE	OUT-OF-STATE
<b>KNOXVILLE CAMPUS</b>		
UNDERGRADUATE	5,290	16,360
GRADUATE	6,000	17,070
LAW	9,412	24,106
VETERINARY MEDICINE	13,374	37,440
<b>HEALTH SCIENCE CENTER</b>		
<b>ALLIED HEALTH</b>		
Cytotechnology	7,703	21,185
Dental Hygiene - First Year	6,295	16,393
Dental Hygiene - Second Year	6,095	16,193
Health Information Management	7,721	20,768
Medical Technology - First Year	8,318	22,886
Medical Technology - Second Year	5,955	15,667
Occupational Therapy - First Year	4,781	9,829
Occupational Therapy - Second Year	9,065	19,161
Occupational Therapy - Third Year	2,299	5,445
Physical Therapy - First Year	9,265	19,361
Physical Therapy - Second Year	9,065	19,161
Physical Therapy - Third Year	9,065	19,161
<b>COLLEGE OF NURSING</b>		
First Year	9,535	20,001
Returning Student	9,335	19,801
December Graduate	4,681	9,914

	IN-STATE	OUT-OF-STATE
<b>HEALTH SCIENCE CENTER (Continued)</b>		
<b>GRADUATE HEALTH SCIENCES</b>		
First Year	8,324	20,800
Returning Student	8,124	20,600
June Graduate	8,124	20,600
<b>COLLEGE OF DENTISTRY</b>		
First Year	18,037	38,013
Second Year	17,814	37,790
Third Year	17,814	37,790
Fourth Year	17,814	37,790
<b>COLLEGE OF MEDICINE</b>		
First Year	19,469	36,353
Second Year	18,759	35,151
Third Year	18,224	34,616
Fourth Year	18,224	34,616
<b>COLLEGE OF PHARMACY</b>		
First Year	12,960	25,460
Second Year	12,787	25,287
Third Year	12,787	25,287
Fourth Year	12,787	25,287
<b>SPACE INSTITUTE</b>		
GRADUATE	7,992	24,147

SOURCE: Office of Financial Aid

## Need-Based Financial Aid Academic Year 2005-2006



SOURCE: Office of Financial Aid

**Number and Percent of Occupancy for Student Residence Halls  
And Married/Graduate Student Housing  
Fall 2005**

<b>STUDENT RESIDENCE HALLS</b>				
<b>HALL NAME</b>	<b>NUMBER OF ROOMS</b>	<b>NUMBER OF BEDS</b>	<b>OCCUPANCY AS OF 9-23-05</b>	<b>PERCENT OCCUPANCY</b>
<b>TOTAL</b>	<b>3,593</b>	<b>7,240</b>	<b>6,703</b>	<b>93%</b>
Apartment Residence Hall	306	1,150	1,058	92%
Clement Hall	353	705	658	93%
Gibbs Hall	116	218	187	86%
Greve Hall	199	358	297	83%
Hess Hall	512	954	911	95%
Humes Hall	260	518	509	98%
Massey Hall	292	584	447	77%
Melrose Hall	224	190	168	88%
Morrill Hall	379	753	705	94%
North Carrick Hall	248	494	489	99%
Reese Hall	260	513	512	100%
South Carrick Hall	271	530	520	98%
Strong Hall	173	273	242	89%

<b>MARRIED/GRADUATE STUDENT HOUSING</b>				
<b>APARTMENT COMPLEX</b>	<b>NUMBER OF BUILDINGS</b>	<b>NUMBER OF APARTMENTS</b>	<b>OCCUPANCY AS OF 9-23-05</b>	<b>PERCENT OCCUPANCY</b>
<b>TOTAL</b>	<b>65</b>	<b>1,669</b>	<b>1,221</b>	<b>73%</b>
Golf Range Apartments	25	417	297	71%
Laurel Apartments	1	316	269	85%
Kingston Apartments	1	233	182	78%
Sutherland Apartments	13	417	319	76%
Goodman Family Residence Hall (Memphis)	1	192	154	80%

SOURCE: Department of University Housing

**Main Library  
Holdings and Expenditures  
FY 2001-2005**

CATALOGED MATERIALS	FY 00/01	FY 01/02	FY 02/03	FY 03/04	FY 04/05	FY 01-05 % CHANGE
<b>VOLUMES</b>	2,120,518	2,152,555	2,288,183	2,319,379	2,360,907	11.3
<b>TITLES</b>	1,157,773	1,182,995	1,231,250	1,258,773	1,296,841	12.0
<b>NON-PRINT MATERIALS</b>						
Audio	28,328	28,525	30,048	26,638	27,230	(3.9)
Cartographic	4,251	4,339	6,455	6,778	5,866	38.0
Film/Video	9,527	9,719	10,905	11,290	11,717	23.0
Graphic	130,562	124,153	125,820	123,252	123,000	(5.8)
Microform	2,418,310	2,476,362	2,566,626	2,609,511	2,620,766	8.4
Computer File/CD-ROM	1,290	1,431	1,309	1,508	1,925	49.2
<b>PERIODICALS AND OTHER SERIALS RECEIVED</b>						
Number of Titles	13,309	14,073	14,284	15,286	25,476	91.4
<b>EXPENDITURES</b>	11,790,275	12,302,454	15,605,403	15,361,265	16,121,770	36.7

SOURCE: Office of the Dean of Libraries



**Law Library  
Holdings and Expenditures  
FY 2001-2005**

<b>CATALOGED MATERIALS</b>	<b>FY 00/01</b>	<b>FY 01/02</b>	<b>FY 02/03</b>	<b>FY 03/04</b>	<b>FY 04/05</b>	<b>FY 01-05 % CHANGE</b>
<b>VOLUMES AND EQUIVALENTS</b>	<b>498,656</b>	<b>515,524</b>	<b>529,720</b>	<b>544,317</b>	<b>558,262</b>	<b>12.0</b>
<b>TITLES</b>	<b>97,308</b>	<b>98,975</b>	<b>104,458</b>	<b>109,863</b>	<b>112,208</b>	<b>15.3</b>
<b>NON-PRINT MATERIALS</b>						
Non-print Titles	39,618	39,639	40,555	42,210	42,566	7.4
Microfilm Reels	1,104	1,134	1,148	1,162	1,177	6.6
Microfiche Units	1,216,264	1,254,502	1,290,236	1,333,062	1,367,040	12.4
Microform Equivalent Volumes	208,051	214,754	220,776	227,984	233,820	12.4
<b>SERIALS</b>						
Serial Titles	5,726	6,174	6,274	5,909	5,809	1.4
Number of Serial Subscriptions	6,363	6,847	6,981	6,701	6,650	4.5
<b>EXPENDITURES</b>	<b>2,204,143</b>	<b>2,318,174</b>	<b>2,488,537</b>	<b>2,508,020</b>	<b>2,563,047</b>	<b>16.3</b>

SOURCE: College of Law Library

**Health Sciences Library and Biocommunications Center  
Holdings and Expenditures  
FY 2001-2005**

CATALOGED MATERIALS	FY 00/01	FY 01/02	FY 02/03	FY 03/04	FY 04/05	FY 01-05 % CHANGE
<b>VOLUMES</b>	185,860	187,349	188,319	194,324	195,086	5.0
<b>TITLES</b>	38,812	39,535	39,850	40,406	42,762	10.2
<b>NON-PRINT MATERIALS</b>						
Audiovisual	2,395	2,438	2,054	2,057	2,067	(13.7)
Microform	105	105	105	105	105	0.0
Computer File/CD-ROM	16	16	91	71	77	381.3
<b>PERIODICALS RECEIVED</b>						
Number of Titles	1,458	1,460	1,488	1,254	2,090	43.3
<b>EXPENDITURES</b>	2,209,208	2,125,305	2,577,303	2,659,503	2,703,413	22.4

SOURCE: Health Sciences Library and Biocommunications Center

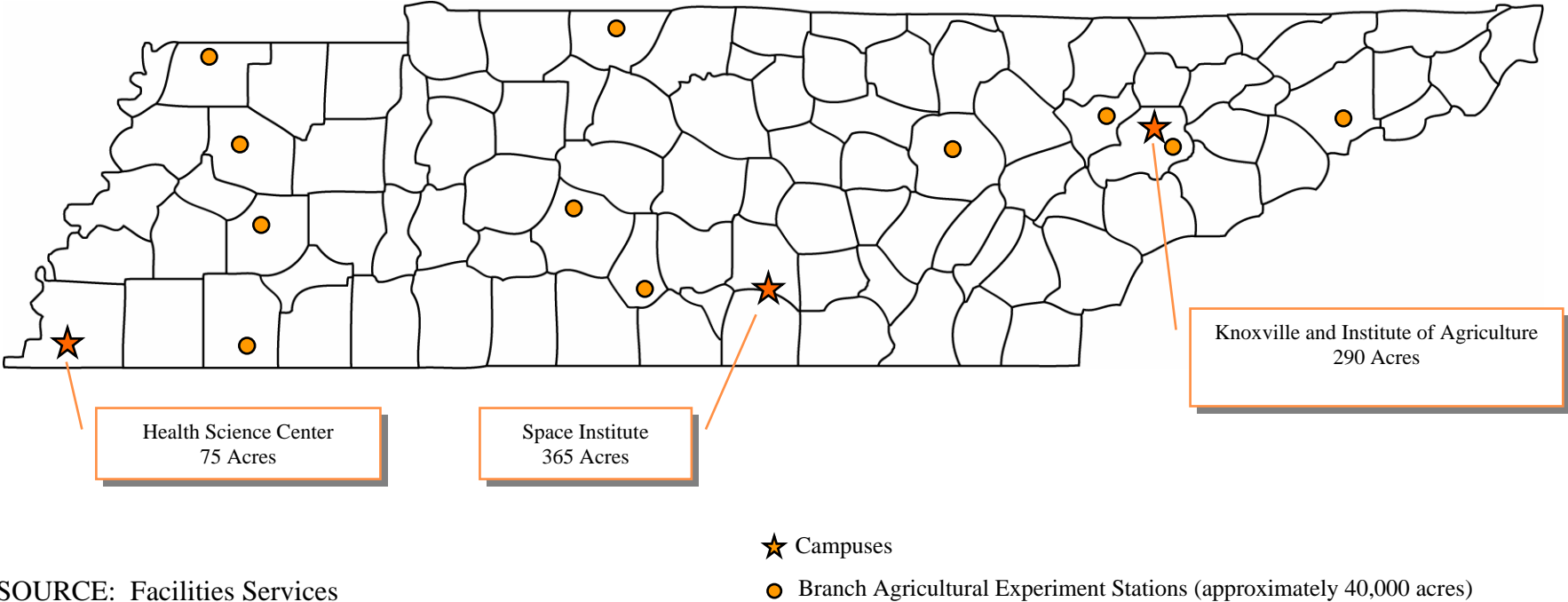
NOTE: Percentages for non-print materials use first year available as base year

**Space Institute Library  
Holdings and Expenditures  
FY 2001-2005**

CATALOGED MATERIALS	FY 00/01	FY 01/02	FY 02/03	FY 03/04	FY 04/05	FY 01-05 % CHANGE
<b>VOLUMES</b>	<b>75,224</b>	<b>75,788</b>	<b>76,075</b>	<b>76,187</b>	<b>76,509</b>	<b>1.7</b>
<b>COLLECTIONS</b>						
Bound Volumes	23,927	24,380	24,556	24,674	24,868	3.9
Technical Reports	51,327	51,407	51,463	51,488	51,499	0.3
<b>NON-PRINT MATERIALS</b>						
Film/Video	79	79	79	79	79	0.0
Microform	209,480	211,865	213,552	213,552	213,552	1.9
Computer File	64	64	83	83	83	29.7
Other Audio/Visual	143	154	154	154	154	7.7
<b>PERIODICALS AND OTHER SERIALS RECEIVED</b>						
Number of Titles	214	186	154	148	148	(30.8)
<b>EXPENDITURES</b>	<b>233,772</b>	<b>215,181</b>	<b>197,348</b>	<b>211,449</b>	<b>207,214</b>	<b>(11.4)</b>

SOURCE: Office of the Dean of Libraries

**University of Tennessee  
Facilities and Acreage  
Fall 2005**



SOURCE: Facilities Services

**One Year Retention Rates  
First-Time Full-Time Freshmen  
Fall Terms 1983-2004**

Enrollment Year	Total		Male		Female		Black		White		Other	
	Number	Rate	Number	Rate	Number	Rate	Number	Rate	Number	Rate	Number	Rate
1983	3,150	77.9	1,631	77.9	1,519	77.9	184	75.5	2,874	78.1	92	75.0
1984	3,195	78.0	1,607	77.5	1,588	78.5	175	70.9	2,941	78.4	79	78.5
1985	3,299	78.7	1,694	77.9	1,605	79.6	191	75.4	3,055	79.0	53	77.4
1986	3,503	77.5	1,811	76.9	1,692	78.1	205	78.5	3,246	77.4	52	80.8
1987	3,683	78.6	1,886	77.7	1,797	79.5	181	74.0	3,437	78.8	65	78.5
1988	3,708	78.9	1,959	76.7	1,749	81.3	192	73.4	3,462	79.2	54	74.1
1989	3,296	80.0	1,696	79.4	1,600	80.7	185	80.5	3,045	80.1	66	77.3
1990	3,336	79.5	1,706	78.5	1,630	80.6	239	81.2	3,006	79.1	91	87.9
1991	2,986	81.5	1,540	80.7	1,446	82.4	217	80.7	2,668	81.4	101	86.1
1992	3,136	80.0	1,584	79.3	1,552	80.9	209	78.5	2,815	80.0	112	83.9
1993	2,799	78.6	1,391	77.3	1,408	79.8	175	78.9	2,521	78.4	103	81.6
1994	2,850	75.9	1,470	74.5	1,380	77.4	144	77.1	2,604	75.8	102	75.5
1995	3,427	76.8	1,639	74.8	1,788	78.6	153	83.7	3,141	76.2	133	84.2
1996	3,637	76.7	1,795	74.4	1,842	78.9	192	79.7	3,305	76.4	140	78.6
1997	3,823	78.1	1,882	76.7	1,941	79.4	243	84.0	3,408	77.8	172	76.2
1998	3,747	78.7	1,791	76.7	1,956	80.6	273	78.0	3,336	79.0	138	73.2
1999	4,099	75.4	1,931	71.7	2,168	78.7	328	72.6	3,607	75.8	164	74.4
2000	3,794	78.3	1,840	76.3	1,954	80.3	268	81.5	3,364	77.7	162	85.2
2001	3,898	75.5	1,914	72.1	1,984	78.8	190	75.1	3,405	75.7	203	69.0
2002	3,638	77.8	1,761	76.7	1,877	78.8	321	83.5	3,115	77.5	202	73.3
2003	3,529	78.0	1,721	76.7	1,808	79.3	319	80.3	3,038	77.6	172	82.0
2004	4,395	79.6	2,106	77.5	2,289	81.6	440	81.8	3,726	79.5	229	76.9

SOURCE: Student Information System

**Four Year Graduation Rates  
First-Time Full-Time Freshmen  
Fall Terms 1983-2001**

Enrollment Year	Total		Male		Female		Black		White		Other	
	Number	Rate	Number	Rate	Number	Rate	Number	Rate	Number	Rate	Number	Rate
1983	3,150	23.0	1,631	17.7	1,519	28.8	184	10.9	2,874	23.8	92	25.0
1984	3,195	24.9	1,607	19.7	1,588	30.1	175	9.7	2,941	25.6	79	30.4
1985	3,299	24.1	1,694	19.7	1,605	28.8	191	11.0	3,055	24.8	53	30.2
1986	3,503	22.2	1,811	17.7	1,692	27.0	205	8.8	3,246	23.0	52	26.9
1987	3,683	21.4	1,886	14.5	1,797	28.6	181	7.7	3,437	22.0	65	26.2
1988	3,708	22.8	1,959	16.5	1,749	29.8	192	10.4	3,462	23.5	54	22.2
1989	3,296	24.7	1,696	19.6	1,600	30.1	185	8.7	3,045	25.6	66	30.3
1990	3,336	23.6	1,706	17.4	1,630	30.2	239	12.1	3,006	24.4	91	27.5
1991	2,986	25.1	1,540	17.3	1,446	33.5	217	21.2	2,668	25.1	101	34.7
1992	3,136	22.6	1,584	16.8	1,552	28.6	209	13.9	2,815	23.2	112	24.1
1993	2,799	24.1	1,391	17.3	1,408	30.8	175	15.4	2,521	24.7	103	23.3
1994	2,850	23.6	1,470	15.5	1,380	32.3	144	12.5	2,604	24.4	102	18.6
1995	3,427	26.8	1,639	20.2	1,788	32.9	153	19.0	3,141	27.0	133	31.6
1996	3,637	28.4	1,795	19.9	1,842	36.8	192	17.7	3,305	29.0	140	30.7
1997	3,823	27.5	1,882	19.3	1,941	35.4	243	20.6	3,408	28.0	172	26.2
1998	3,747	26.7	1,791	16.7	1,956	35.9	273	18.7	3,336	27.6	138	21.7
1999	4,099	28.7	1,931	18.9	2,168	37.4	328	24.7	3,607	29.1	164	26.2
2000	3,794	30.6	1,840	22.3	1,954	38.4	268	28.0	3,364	30.5	162	37.0
2001	3,898	29.4	1,914	21.2	1,984	37.4	290	20.7	3,405	30.4	203	25.6

SOURCE: Student Information System and Academic Inventory

**Five Year Graduation Rates  
First-Time Full-Time Freshmen  
Fall Terms 1983-2000**

Enrollment Year	Total		Male		Female		Black		White		Other	
	Number	Rate	Number	Rate	Number	Rate	Number	Rate	Number	Rate	Number	Rate
1983	3,150	48.5	1,631	47.0	1,519	50.2	184	34.8	2,874	49.4	92	48.9
1984	3,195	45.6	1,607	42.1	1,588	49.1	175	30.3	2,941	46.3	79	50.6
1985	3,299	47.5	1,694	45.5	1,605	49.6	191	28.3	3,055	48.7	53	49.1
1986	3,503	45.0	1,811	41.7	1,692	48.5	205	32.2	3,246	45.9	52	40.4
1987	3,683	45.3	1,886	41.1	1,797	49.6	181	30.9	3,437	45.9	65	53.8
1988	3,708	49.1	1,959	44.1	1,749	54.7	192	36.5	3,462	49.8	54	46.3
1989	3,296	48.4	1,696	44.7	1,600	52.3	185	34.1	3,045	49.2	66	53.0
1990	3,336	48.5	1,706	44.1	1,630	53.1	239	33.9	3,006	49.5	91	55.0
1991	2,986	48.9	1,540	42.3	1,446	56.0	217	39.2	2,668	49.7	101	49.5
1992	3,136	48.4	1,584	44.6	1,552	52.3	209	34.9	2,815	49.4	112	48.2
1993	2,799	49.7	1,391	45.9	1,408	53.4	175	35.4	2,521	50.6	103	51.5
1994	2,850	50.7	1,470	44.6	1,380	54.6	144	36.1	2,604	50.7	102	34.3
1995	3,427	52.4	1,639	46.3	1,788	58.1	153	44.4	3,141	52.6	133	58.6
1996	3,637	51.8	1,795	45.7	1,842	57.8	192	39.1	3,305	52.4	140	55.0
1997	3,823	53.1	1,882	47.0	1,941	59.1	243	47.7	3,408	53.8	172	47.1
1998	3,747	53.3	1,491	46.0	1,956	60.0	273	45.4	3,336	54.0	138	52.2
1999	4,099	52.1	1,931	45.9	2,168	57.7	328	47.9	3,607	52.5	167	52.4
2000	3,794	54.8	1,840	49.9	1,954	59.4	268	50.4	3,364	54.8	162	61.1

SOURCE: Student Information System and Academic Inventory

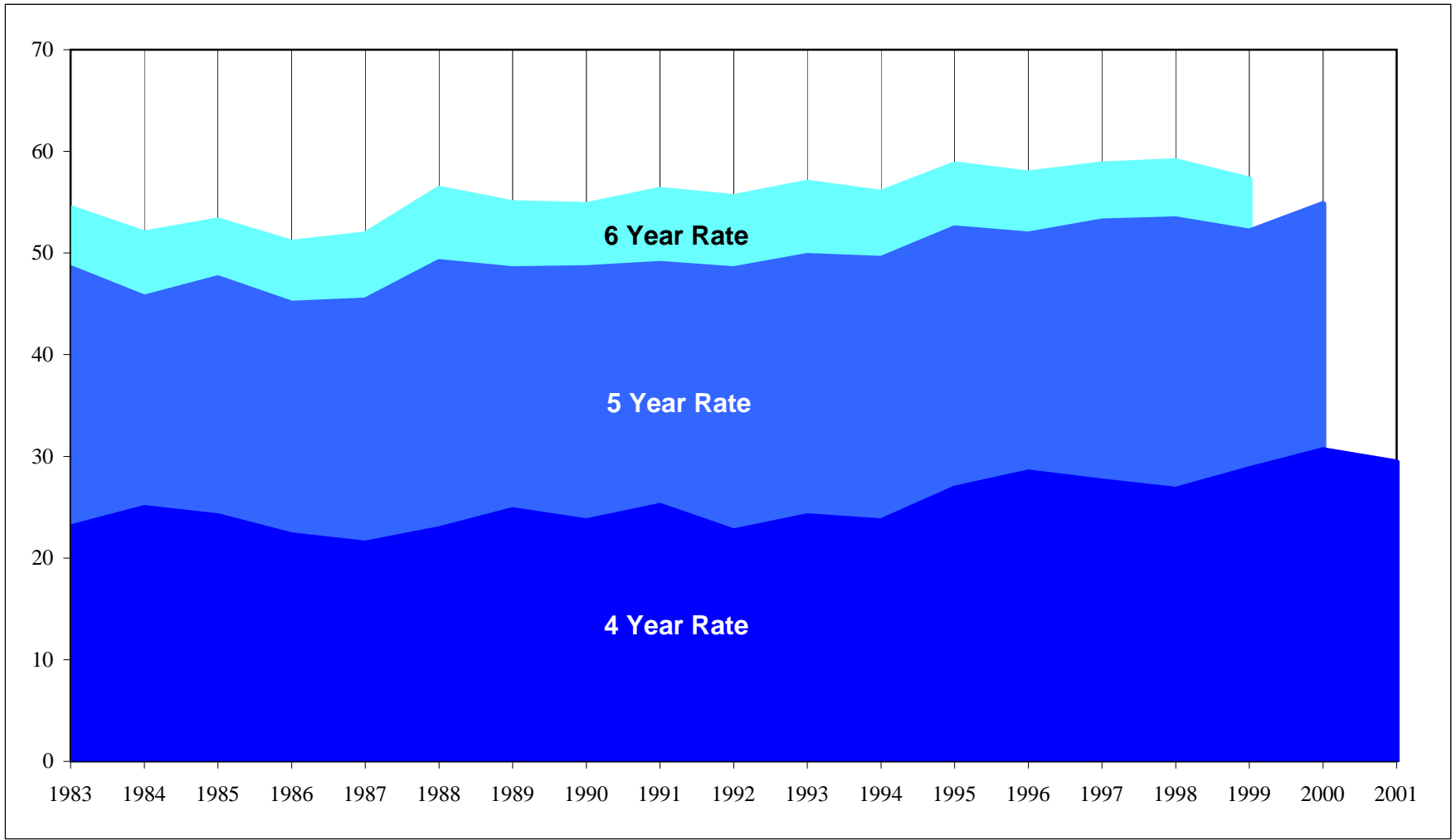
**Six Year Graduation Rates  
First-Time Full-Time Freshmen  
Fall Terms 1983-1999**

Enrollment Year	Total		Male		Female		Black		White		Other	
	Number	Rate	Number	Rate	Number	Rate	Number	Rate	Number	Rate	Number	Rate
1983	3,150	54.4	1,631	54.0	1,519	55.0	184	43.5	2,874	55.2	92	52.2
1984	3,195	51.9	1,607	50.0	1,588	53.9	175	40.0	2,941	52.5	79	57.0
1985	3,299	53.2	1,694	52.0	1,605	54.5	191	36.1	3,055	54.2	53	56.6
1986	3,503	51.0	1,811	48.8	1,692	53.3	205	42.0	3,246	51.7	52	42.3
1987	3,683	51.8	1,886	49.2	1,797	54.6	181	42.5	3,437	52.1	65	63.1
1988	3,708	56.3	1,959	52.8	1,749	60.2	192	46.4	3,462	56.9	54	51.9
1989	3,296	54.9	1,696	53.1	1,600	56.8	185	42.7	3,045	55.5	66	62.1
1990	3,336	54.7	1,706	52.2	1,630	57.3	239	41.4	3,006	55.7	91	58.2
1991	2,986	56.2	1,540	51.7	1,446	60.9	217	46.5	2,668	56.9	101	58.4
1992	3,136	55.5	1,584	54.2	1,552	56.9	209	44.0	2,815	56.5	112	53.6
1993	2,799	56.9	1,391	54.9	1,408	58.9	175	45.1	2,521	57.4	103	64.1
1994	2,850	55.2	1,470	52.1	1,380	58.4	144	43.0	2,604	56.2	102	46.6
1995	3,427	58.7	1,639	54.1	1,788	63.0	153	52.9	3,141	58.8	133	62.4
1996	3,637	57.8	1,795	53.3	1,842	62.3	192	46.3	3,305	58.4	140	55.4
1997	3,823	58.7	1,882	54.1	1,941	63.2	243	53.9	2,408	59.2	172	57.0
1998	3,747	59.0	1,491	53.1	1,956	64.3	273	53.5	3,336	59.4	138	58.7
1999	4,099	57.2	1,931	52.4	2,168	61.4	328	54.0	3,607	57.5	164	57.3

SOURCE: Student Information System and Academic Inventory



**Graduation Rates  
First-Time Full-Time Freshmen  
Fall Terms 1983-2001**



SOURCE: Student Information System and Academic Inventory

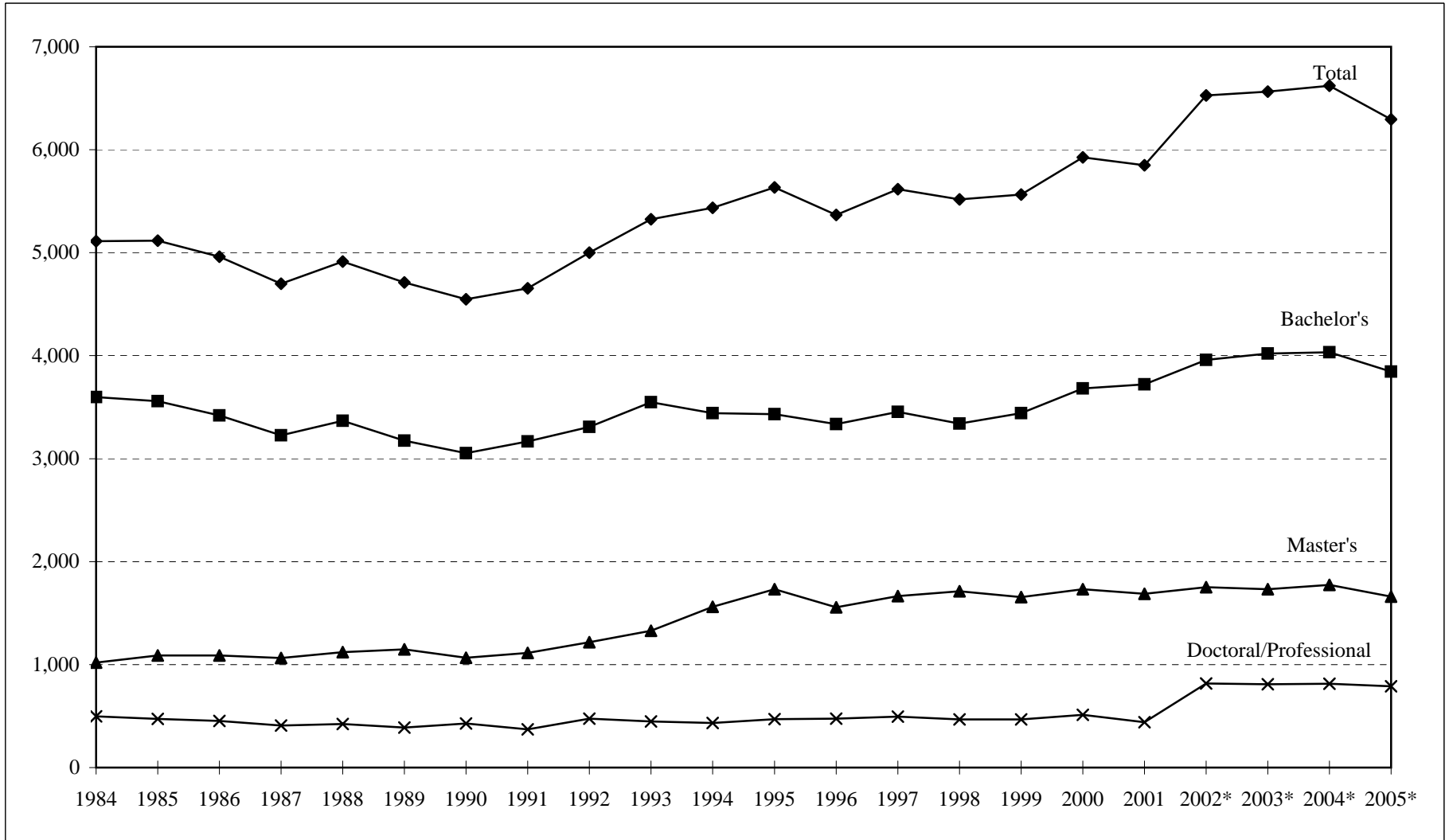
**Summary of Degrees Conferred  
By Discipline  
FY 2001-2005**

	BACHELOR'S					MASTER'S					DOCTORAL/PROFESSIONAL				
	00-01	01-02*	02-03*	03-04*	04-05*	00-01	01-02*	02-03*	03-04*	04-05*	00-01	01-02*	02-03*	03-04*	04-05*
<b>DEGREES AWARDED</b>	<b>3,722</b>	<b>3,959</b>	<b>4,022</b>	<b>4,034</b>	<b>3,844</b>	<b>1,687</b>	<b>1,752</b>	<b>1,732</b>	<b>1,774</b>	<b>1,661</b>	<b>441</b>	<b>817</b>	<b>810</b>	<b>813</b>	<b>790</b>
<b>DOCTORAL</b>											<b>239</b>	<b>276</b>	<b>262</b>	<b>280</b>	<b>281</b>
<b>PROFESSIONAL</b>											<b>202</b>	<b>541</b>	<b>548</b>	<b>533</b>	<b>509</b>
<b>COLLEGE/SCHOOL</b>															
Agricultural Sciences & Natural Resources	224	226	225	188	192	77	63	55	58	66	5	11	3	11	14
Architecture & Design	88	56	77	74	51	16	5	15	6	11	0	0	0	0	0
Arts & Sciences	1,373	1,558	1,551	1,722	1,633	235	273	250	253	218	93	90	84	115	80
Biomedical Science	0	0	0	0	0	0	0	0	0	0	2	2	1	0	0
Business Administration	824	768	825	709	730	280	263	277	311	287	18	8	9	13	13
Communication & Information	330	355	397	379	355	105	78	94	89	98	5	8	8	5	3
Education, Health & Human Sciences	459	491	465	430	376	598	597	567	555	479	70	86	73	63	63
Engineering	294	284	280	312	286	147	127	121	153	150	31	19	28	34	36
Health Science Center		71	57	70	82		102	93	74	96		361	368	344	364
Intercollegiate Programs	0	0	0	0	0	23	17	22	23	21	9	8	3	4	12
Law	0	0	0	0	0	0	0	0	0	0	144	154	161	151	136
Nursing	112	120	110	123	117	36	40	37	45	39	3	5	1	3	3
Social Work	18	30	35	27	22	170	187	201	207	196	3	3	6	5	4
Veterinary Medicine	0	0	0	0	0	0	0	0	0	0	58	62	65	65	62

SOURCE: Academic Inventory

\*Data for 2002 - 2005 include Knoxville, Institute of Agriculture, Veterinary Medicine, Space Institute and Health Science Center

## Summary of Degrees Conferred By Level FY 1984-2005

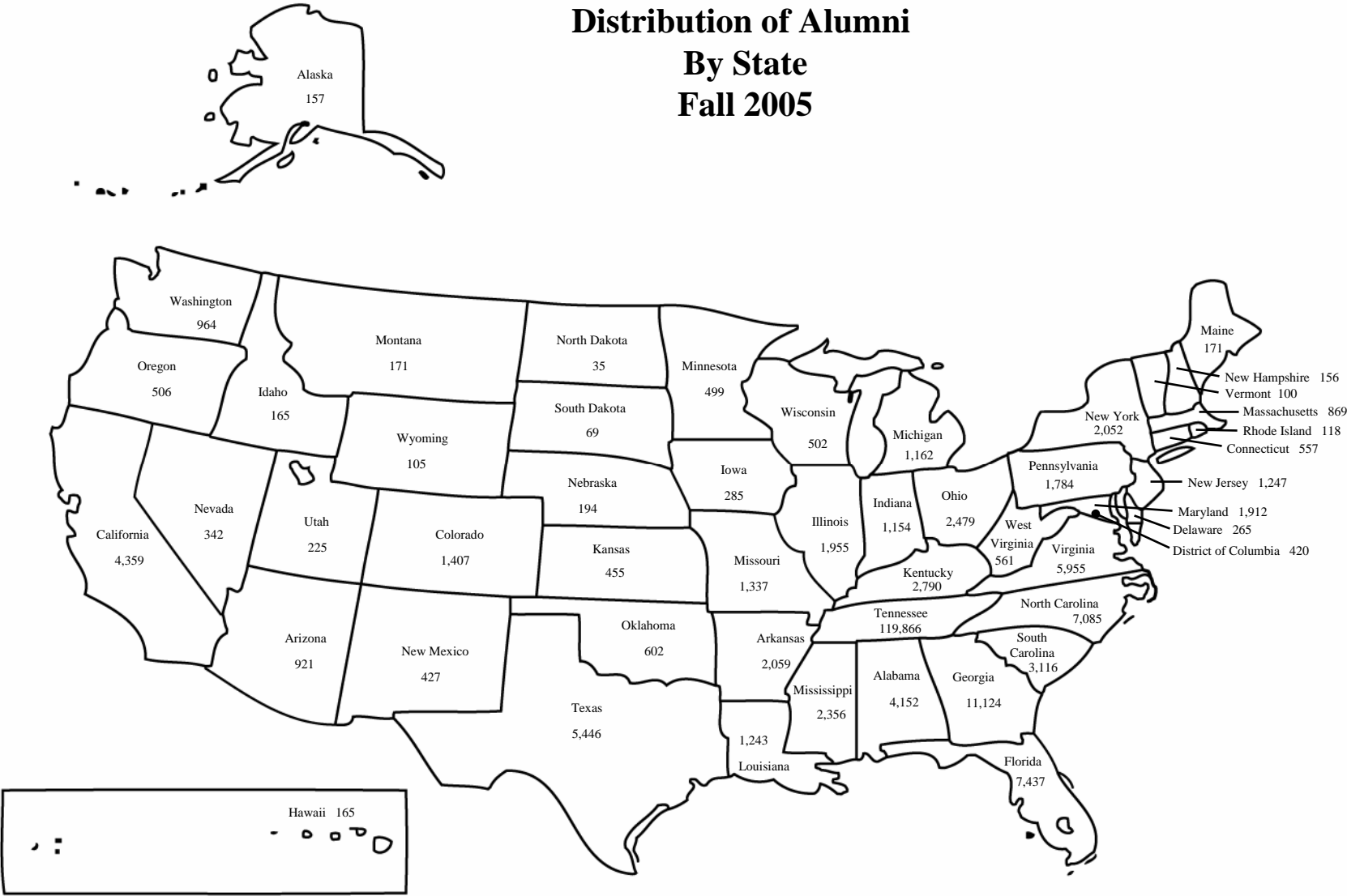


SOURCE: Academic Inventory

\*Data for 2002-2005 include Knoxville, Institute of Agriculture, Veterinary Medicine, Space Institute and Health Science Center



# Distribution of Alumni By State Fall 2005



SOURCE: Student Information System

NOTES: Includes Knoxville, Institute of Agriculture, Veterinary Medicine, Space Institute and Health Science Center. If an alumnus has degrees from multiple campuses, they are counted for each degree.

## Degrees Awarded by Major FY 1996-2005

Major	Degree Awarded	1995-96	1996-97	1997-98	1998-99	1999-00	2000-01	2001-02	2002-03	2003-04	2004-05
Accounting	Bachelor's	117	112	102	99	129	184	144	167	163	138
	Master's	57	74	66	80	76	74	82	81	80	78
Advertising	Bachelor's	44	56	48	52	82	83	97	108	88	76
Aerospace Engineering	Bachelor's	8	10	6	3	10	11	9	11	19	24
	Master's	8	9	3	7	2	4	4	6	6	3
	PhD	0	3	2	0	1	1	1	3	0	1
Agricultural & Extension Education	Bachelor's	6	10	9	7	15	9	11	10	6	6
	Master's	6	7	9	7	10	11	11	3	9	10
Agricultural Economics & Business	Bachelor's	20	21	14	20	16	22	15	13	26	22
	Master's	4	8	10	3	4	12	6	8	5	11
	PhD	1	3	3	3	0	0	0		0	0
Agricultural Mechanization	Bachelor's	4	0	0	1	0	0	0	0	0	0
Anatomy *	Master's							0	2	0	0
	PhD							4	2	4	2
Animal Science	Bachelor's	43	50	46	40	35	61	56	56	49	47
	Master's	4	10	5	4	8	7	6	4	5	2
	PhD	1	2	1	4	2	0	6	1	6	0
Anthropology	Bachelor's	51	37	47	38	54	38	45	55	49	57
	Master's	4	16	9	13	8	7	11	10	7	7
	PhD	4	2	8	6	7	6	6	2	5	6
Architecture	Bachelor's	48	45	37	47	49	67	40	56	56	30
	Master's	0	1	5	5	10	16	5	15	6	11
Area, Ethnic & Cultural Studies	Bachelor's	21	40	47	36	63	35	59	57	52	68
Art History	Bachelor's	11	8	4	9	11	8	13	11	13	5
Art Education	Master's	3	1	0	0	0	0	0	0	0	0

continued

## Degrees Awarded by Major FY 1996-2005

Major	Degree Awarded	1995-96	1996-97	1997-98	1998-99	1999-00	2000-01	2001-02	2002-03	2003-04	2004-05
Audiology	Bachelor's	11	4	4	9	8	11	10	4	5	9
	Master's	26	11	9	14	14	16	15	11	3	0
	PhD									4	14
Aviation Systems	Master's										19
Biochemistry & Cellular & Molecular Biology**	Bachelor's	16	15	16	16	9	1	0	1	0	0
	Master's	2	2	4	0	0	5	6	2	4	4
	PhD	1	3	5	2	4	3	10	9	5	5
Biological Sciences**	Master's	13	13	13	8	1	0	2	2	3	0
	PhD	10	7	10	8	1	3	4	1	2	4
Biology	Bachelor's	92	118	121	145	137	129	107	119	151	126
Biomedical Engineering *	Master's							9	7	6	16
	PhD							0	1	3	3
Biosystems Engineering	Bachelor's	7	8	11	6	5	7	6	7	3	11
	Master's	4	3	0	2	1	5	3	1	4	2
	PhD	0	1	2	2	1	1	1	0	2	1
Biosystems Engineering Technology	Master's	6	6	7	4	5	0	6	3	5	0
Botany	Bachelor's	9	9	5	4	3	2	0	0	0	0
	Master's	4	7	2	3	2	4	0	3	1	1
	PhD	1	2	2	0	2	1	4	3	3	2
Business Administration	Bachelor's	77	55	60	78	89	90	95	107	81	83
	Master's	106	92	109	138	169	182	164	177	177	190
	PhD	12	9	11	5	8	9	5	5	10	6
Business/Marketing Education	Bachelor's	37	23	29	16	9	3	0	0	0	0
Chemical Engineering	Bachelor's	39	57	37	27	36	42	27	28	24	19
	Master's	9	15	3	9	8	10	4	8	5	5
	PhD	3	10	3	3	7	0	3	3	5	1

continued

## Degrees Awarded by Major FY 1996-2005

Major	Degree Awarded	1995-96	1996-97	1997-98	1998-99	1999-00	2000-01	2001-02	2002-03	2003-04	2004-05
Chemistry	Bachelor's	12	13	11	14	11	13	16	18	22	11
	Master's	3	7	10	7	7	5	3	5	3	2
	PhD	16	14	6	14	21	9	10	12	12	9
Child Development	Bachelor's	55	56	41	44	48	49	73	88	78	75
	Master's	5	13	23	11	33	23	30	32	31	20
Civil Engineering	Bachelor's	77	63	65	73	61	61	48	68	46	46
	Master's	17	30	18	20	40	28	22	20	22	29
	PhD	9	7	2	3	4	3	1	3	7	6
Classics	Bachelor's	1	2	2	5	6	7	7	2	6	16
Clinical Laboratory Sciences *	Master's							0	1	0	0
College Student Personnel	Master's	9	7	16	13	13	11	16	8	17	8
Communications	Bachelor's										7
	Master's	28	18	31	39	25	27	26	35	29	18
	PhD	6	7	6	6	9	5	8	8	5	3
Comparative & Experimental Medicine	Master's	3	0	3	2	2	1	3	2	1	2
	PhD	6	3	6	6	5	4	5	3	4	9
Computer Engineering	Bachelor's	0	0	0	0	0	0	13	20	25	19
Computer Science	Bachelor's	14	20	29	25	22	35	45	45	40	30
	Master's	20	21	23	32	28	23	27	30	29	26
	PhD	3	4	5	3	3	2	1	2	3	0
Curriculum & Instruction	Master's	284	309	195	9	2	0	0	0	0	0
	PhD	6	12	3	0	0	0	0	0	0	0
Cytotechnology *	Bachelor's							5	8	3	4
Dentistry *	DDS							75	74	75	67

continued



## Degrees Awarded by Major FY 1996-2005

Major	Degree Awarded	1995-96	1996-97	1997-98	1998-99	1999-00	2000-01	2001-02	2002-03	2003-04	2004-05
Dental Sciences *	Master's							6	5	6	6
Dental Hygiene *	Bachelor's							25	24	30	32
Ecology & Evolutionary Biology	Bachelor's	0	0	0	0	0	1	1	0	0	0
	Master's	4	9	8	2	0	7	4	4	7	1
	PhD	5	3	3	3	2	8	3	6	4	2
Economics (CAS)	Bachelor's	53	55	60	57	55	77	92	83	100	63
Economics (CBA)	Bachelor's	4	3	7	10	9	11	8	9	4	10
	Master's	6	5	7	2	3	7	3	3	11	2
	PhD	12	4	4	5	6	7	3	3	3	5
Education Administration & Policy Studies	Master's	21	20	10	9	15	10	14	7	10	7
	PhD	8	16	7	7	9	7	2	2	7	9
Education	Master's	0	0	130	343	360	367	314	344	355	300
	PhD	33	38	37	28	55	42	54	48	43	35
Educational Psychology	Master's	20	32	33	42	29	36	48	34	43	34
	PhD	0	0	0	0	2	0	3	0	3	4
Electrical Engineering	Bachelor's	73	63	62	52	66	52	50	44	56	40
	Master's	23	23	14	17	19	14	11	26	42	30
	PhD	9	5	3	2	1	7	4	4	4	8
Electronic Media	Bachelor's	65	82	90	90	88	95	86	82	86	78
Engineering Physics	Bachelor's	2	2	1	1	2	3	1	1	3	3
Engineering Science	Bachelor's	27	19	21	15	11	21	23	17	30	34
	Master's	11	12	6	17	5	5	7	4	8	11
	PhD	9	6	6	3	4	4	2	4	1	0
English	Bachelor's	142	139	146	160	166	155	162	147	153	163
	Master's	13	15	22	16	26	12	18	24	22	20
	PhD	14	7	11	14	7	3	8	8	7	2

continued

## Degrees Awarded by Major FY 1996-2005

Major	Degree Awarded	1995-96	1996-97	1997-98	1998-99	1999-00	2000-01	2001-02	2002-03	2003-04	2004-05
Entomology & Plant Pathology	Master's	9	4	13	5	9	7	4	8	3	8
Environmental Engineering	Master's	37	34	25	21	16	9	9	13	9	18
Epidemiology *	Master's							5	6	3	6
Exercise Science	Bachelor's	0	47	47	35	48	54	48	29	38	37
	Master's									12	11
Family Studies	Bachelor's	0	17	38	47	61	41	38	34	41	25
Finance	Bachelor's	107	132	116	136	144	146	135	150	137	153
Food Science & Technology	Bachelor's	11	6	5	15	7	6	12	11	11	7
	Master's	4	7	6	9	5	6	6	7	4	11
	PhD	3	5	1	2	4	1	3	0	1	2
Forestry	Bachelor's	38	26	19	29	17	16	21	18	18	14
	Master's	5	3	2	9	5	8	5	3	8	8
French	Bachelor's	16	9	9	12	9	14	12	12	13	18
	Master's	2	4	1	10	4	1	2	5	6	2
Geography	Bachelor's	15	22	19	21	16	16	19	23	26	34
	Master's	8	11	6	3	3	5	6	10	11	6
	PhD	3	2	3	2	2	3	2	2	3	2
Geology	Bachelor's	22	15	11	4	9	10	11	12	10	3
	Master's	7	8	6	8	7	8	10	5	6	5
	PhD	2	4	3	1	2	2	4	3	1	0
German	Bachelor's	8	10	9	9	9	10	7	4	6	13
	Master's	3	3	3	2	3	3	5	3	1	3
Graphic Design	Bachelor's	22	23	25	21	27	31	23	8	24	14
Health Education	Bachelor's	22	13	15	9	12	11	6	7	10	5
	Master's	9	11	9	5	7	4	7	1	1	2
	PhD	1	2	4	1	0	1	1	0	0	0

continued

## Degrees Awarded by Major FY 1996-2005

Major	Degree Awarded	1995-96	1996-97	1997-98	1998-99	1999-00	2000-01	2001-02	2002-03	2003-04	2004-05
Health Information Management *	Bachelor's							13	7	11	13
Health Science Administration *	PhD							3	0	2	2
History	Bachelor's	65	71	93	82	87	96	84	78	98	93
	Master's	6	9	11	12	3	3	9	4	10	13
	PhD	4	7	3	7	1	1	4	5	2	2
Hotel & Restaurant Management	Bachelor's	46	33	45	37	38	29	41	26	28	19
	Master's	2	8	0	2	0	0	0	0	0	0
Human Ecology Education	Bachelor's	2	4	1	0	0	0	0	0	0	0
Human Ecology	Master's	3	3	5	5	1	1	0	0	0	0
	PhD	13	26	22	16	17	20	26	23	10	15
Human Performance & Sports Studies	Bachelor's	49	5	2	2	1	0	0	0	0	0
	Master's	39	54	57	71	81	71	78	49	47	40
Human Resource Development	Bachelor's	32	60	29	43	57	39	50	56	52	27
	Master's	50	44	44	33	36	27	24	32	23	3
Human Services	Bachelor's	29	26	20	27	26	18	21	23	29	10
Industrial & Organizational Psychology	Master's	1	0	0	0	0	0	0	0	0	0
	PhD	4	11	1	3	4	5	3	0	5	3
Industrial Education	Bachelor's	0	0	0	0	0	10	3	0	1	0
Industrial Engineering	Bachelor's	35	30	38	33	34	36	37	24	26	29
	Master's	36	35	32	23	40	44	30	20	16	19
Information Sciences	Master's	34	46	50	35	42	78	52	59	60	80
Interior Design	Bachelor's	21	13	16	18	16	21	16	21	18	21
	Master's	3	0	4	3	0	0	0	0	0	0
Italian	Bachelor's	0	1	1	1	0	2	4	2	1	0

continued

**Degrees Awarded by Major  
FY 1996-2005**

Major	Degree Awarded	1995-96	1996-97	1997-98	1998-99	1999-00	2000-01	2001-02	2002-03	2003-04	2004-05
Journalism	Bachelor's	68	69	66	94	94	109	139	168	157	135
Law	JD	142	134	149	155	164	144	154	161	151	136
Logistics & Transportation	Bachelor's	71	110	103	132	130	152	135	174	115	111
Management Science	Master's	1	7	4	4	2	4	2	5	6	7
	PhD	2	4	1	3	2	2	0	1	0	2
Marketing	Bachelor's	107	81	78	108	124	145	135	152	149	150
Materials Science & Engineering	Bachelor's	7	7	8	6	2	6	8	6	3	5
	Master's							6	5	7	8
	PhD							0	2	8	11
Mathematics	Bachelor's	32	26	19	25	15	18	15	15	20	19
	Master's	18	21	15	16	19	12	14	9	13	11
	PhD	4	7	4	4	7	6	3	2	4	2
Mechanical Engineering	Bachelor's	76	70	79	59	76	62	58	50	67	57
	Master's	16	20	9	16	11	16	16	10	17	18
	PhD	4	0	5	4	6	6	4	2	1	3
Medical Technology **	Bachelor's	11	11	5	5	5	5	14	11	19	20
Medicine	MD							158	153	151	145
Metallurgical Engineering	Master's	6	6	2	7	5	6	4	0	0	0
	PhD	3	4	5	4	3	1	2	1	0	0
Microbiology**	Bachelor's	20	15	15	14	19	13	3	0	0	0
	Master's	3	1	3	4	3	5	4	2	2	4
	PhD	3	5	8	1	4	6	3	3	9	7
Modern Foreign Languages	PhD	2	2	2	1	3	2	2	4	5	1

continued

## Degrees Awarded by Major FY 1996-2005

Major	Degree Awarded	1995-96	1996-97	1997-98	1998-99	1999-00	2000-01	2001-02	2002-03	2003-04	2004-05
Multi/Interdisciplinary Studies	Bachelor's	132	121	117	89	67	44	64	36	39	37
	Master's	20	11	17	12	16	22	14	20	22	0
Music Education	Bachelor's	4	0	0	0	0	0	0	0	0	0
Music	Bachelor's	16	20	27	25	21	30	36	36	37	22
	Master's	18	20	28	14	25	15	26	24	27	33
Natural Resources	PhD										7
Nuclear Engineering	Bachelor's	11	12	11	7	6	0	10	11	13	10
	Master's	19	8	12	9	11	4	9	7	13	6
	PhD	6	5	6	7	3	6	2	5	4	4
Nursing**	Bachelor's	102	101	104	91	125	112	120	110	123	117
	Master's	47	48	42	51	43	36	65	68	75	73
	PhD	5	1	2	7	5	3	21	21	13	25
Nutrition	Bachelor's	13	22	8	10	12	16	15	11	8	19
	Master's	8	11	9	12	5	16	14	9	4	10
Occupational Therapy *	Bachelor's							21	12	14	17
Ornamental Horticulture	Bachelor's	43	45	42	44	65	65	56	40	14	3
	Master's	3	3	5	6	2	6	2	1	3	0
Pathology *	Master's							0	0	0	0
	PhD							4	2	3	4
Pharmacology *	Master's							0	0	0	0
	PhD							1	7	1	2
Pharmacy *	PharmD							92	95	91	99
Physical Therapy *	Bachelor's							1	0	0	0
	Master's							54	41	35	32
	PhD										6
Physiology *	Master's							1	0	0	0
	PhD							0	1	2	2

continued

## Degrees Awarded by Major FY 1996-2005

Major	Degree Awarded	1995-96	1996-97	1997-98	1998-99	1999-00	2000-01	2001-02	2002-03	2003-04	2004-05
Pharmaceutics *	Master's							1	0	0	1
	PhD							1	5	2	2
Philosophy	Bachelor's	15	8	8	10	15	7	20	13	17	16
	Master's	4	8	4	3	6	6	9	5	3	4
	PhD	2	1	4	7	2	3	4	4	3	2
Physics	Bachelor's	5	4	4	2	3	3	7	4	3	7
	Master's	12	7	7	6	3	1	6	9	4	9
	PhD	9	8	8	4	10	13	7	7	7	4
Planning	Master's	4	11	35	16	23	21	16	20	15	4
Plant Science	Bachelor's	28	43	42	33	16	12	17	46	50	57
	Master's	7	12	6	5	7	7	7	7	2	7
	PhD	1	3	0	6	5	3	1	2	2	4
Political Science	Bachelor's	105	111	102	102	93	97	142	157	151	160
	Master's	7	6	4	8	5	2	7	4	4	7
	PhD	5	6	9	7	7	1	7	4	1	6
Polymer Engineering	Master's	4	1	2	2	2	8	5	2	2	3
	PhD	5	1	0	3	3	3	0	1	1	2
Psychology	Bachelor's	240	293	265	268	286	299	358	392	388	408
	Master's	4	13	10	5	4	8	10	4	7	5
	PhD	18	14	6	20	16	17	11	12	23	16
Public Administration	Bachelor's	8	7	6	2	2	4	8	5	4	5
	Master's	7	6	10	10	5	6	12	5	14	8
Public Health	Bachelor's	0	1	0	0	0	0	0	0	0	0
	Master's	21	15	23	23	24	17	28	24	16	22
Recreation & Tourism Management	Bachelor's	34	33	28	29	38	50	43	40	32	23
	Master's	14	11	16	10	13	8	15	11	11	12

continued

## Degrees Awarded by Major FY 1996-2005

Major	Degree Awarded	1995-96	1996-97	1997-98	1998-99	1999-00	2000-01	2001-02	2002-03	2003-04	2004-05
Rehabilitation Counseling	Master's	12	16	15	9	2	0	0	0	0	0
Religious Studies	Bachelor's	11	10	12	11	13	7	8	14	11	10
Retail & Consumer Sciences	Bachelor's	76	62	65	66	56	63	57	54	64	50
	Master's	0	0	3	6	4	5	7	5	2	2
Russian	Bachelor's	6	1	4	3	1	5	1	1	5	3
Safety Education & Service	Master's	18	8	10	13	12	0	2	11	6	8
Social Work	Bachelor's	30	34	24	31	40	18	30	35	27	22
	Master's	163	179	170	130	210	170	187	201	207	196
	PhD	3	1	6	5	2	3	3	6	5	4
Sociology	Bachelor's	70	75	91	106	100	100	123	98	112	134
	Master's	5	5	11	10	4	2	4	4	2	4
	PhD	4	4	2	3	4	6	3	4	7	1
Spanish	Bachelor's	20	18	16	25	38	29	39	45	53	45
	Master's	10	3	5	5	7	4	5	3	8	6
Special Education	Bachelor's	31	40	28	23	36	26	28	35	22	23
	Master's	36	44	47	15	2	2	0	0	0	0
Speech Communications	Bachelor's	41	45	46	53	54	43	33	39	48	59
Speech Pathology	Bachelor's	36	37	36	42	42	29	37	36	21	26
	Master's	53	47	72	64	56	38	34	25	15	23
Speech Pathology & Hearing Science	PhD	2	1	2	2	3	0	3	0	3	1
Sports Management	Bachelor's	11	22	32	44	59	50	68	62	80	63
Statistics	Bachelor's	13	7	3	7	6	15	16	10	8	17
	Master's	10	8	12	7	9	13	12	11	14	10

continued

## Degrees Awarded by Major FY 1996-2005

Major	Degree Awarded	1995-96	1996-97	1997-98	1998-99	1999-00	2000-01	2001-02	2002-03	2003-04	2004-05
Studio Art	Bachelor's	28	40	40	30	41	49	52	47	66	63
	Master's	11	13	9	7	8	13	6	14	16	6
Theatre	Bachelor's	11	19	14	19	17	24	20	22	19	19
	Master's	2	8	6	3	11	3	3	4	10	5
Veterinary Medicine	DVM	51	66	64	58	62	58	62	65	65	62
Wildlife & Fisheries Science	Bachelor's	38	46	30	37	31	26	32	24	11	25
	Master's	12	7	6	6	6	7	7	10	10	7
Zoology	Bachelor's	40	31	26	11	10	0	0	0	0	0
	Master's	1	2	6	7	1	0	0	0	0	0
	PhD	4	3	1	8	10	0	0	0	0	0
<b>TOTALS</b>											
	<b>Bachelor's</b>	<b>3,336</b>	<b>3,455</b>	<b>3,340</b>	<b>3,443</b>	<b>3,681</b>	<b>3,722</b>	<b>3,722</b>	<b>4,022</b>	<b>4,034</b>	<b>3,844</b>
	<b>Master's</b>	<b>1,557</b>	<b>1,666</b>	<b>1,712</b>	<b>1,655</b>	<b>1,753</b>	<b>1,687</b>	<b>1,687</b>	<b>1,732</b>	<b>1,774</b>	<b>1,661</b>
	<b>PhD</b>	<b>281</b>	<b>295</b>	<b>254</b>	<b>255</b>	<b>286</b>	<b>239</b>	<b>239</b>	<b>262</b>	<b>280</b>	<b>281</b>
	<b>Professional</b>	<b>193</b>	<b>200</b>	<b>213</b>	<b>213</b>	<b>226</b>	<b>202</b>	<b>880</b>	<b>548</b>	<b>533</b>	<b>509</b>
	<b>All Degrees</b>	<b>5,367</b>	<b>5,616</b>	<b>5,519</b>	<b>5,566</b>	<b>5,946</b>	<b>5,850</b>	<b>6,528</b>	<b>6,564</b>	<b>6,622</b>	<b>6,295</b>

\*Degrees Awarded through the Health Science Center

\*\*Degrees Awarded at both the Knoxville Campus and the Health Science Center