



1-2010

# Quarterly Report: First & Second Quarters of Fiscal Year 2010

University of Tennessee Office of Research

Follow this and additional works at: [http://trace.tennessee.edu/utk\\_researchreports](http://trace.tennessee.edu/utk_researchreports)

---

## Recommended Citation

University of Tennessee Office of Research, "Quarterly Report: First & Second Quarters of Fiscal Year 2010" (2010). *Reports*.  
[http://trace.tennessee.edu/utk\\_researchreports/16](http://trace.tennessee.edu/utk_researchreports/16)

This Report is brought to you for free and open access by the Office of Research & Engagement at Trace: Tennessee Research and Creative Exchange. It has been accepted for inclusion in Reports by an authorized administrator of Trace: Tennessee Research and Creative Exchange. For more information, please contact [trace@utk.edu](mailto:trace@utk.edu).

## QUARTERLY REPORT

OFFICE OF RESEARCH—FIRST AND SECOND QUARTERS OF FISCAL YEAR 2010

### SPONSORED PROPOSALS, AWARDS, AND EXPENDITURES

Senior Management Area	Proposals Submitted, FY 10			Awards Received, FY 10			Sponsored Expenditures	
	No.	Amount Requested	% \$ Incr. Over FY 09	No.	Amount Received	% \$ Incr. Over FY 09	Amount Expended	% \$ Incr. Over FY 09
Arts & Sciences	285	\$99,280,674	-13%	290	\$26,203,005	98%	\$13,598,753	9%
Engineering	321	\$135,100,546	13%	284	\$25,510,601	50%	\$16,293,629	9%
Business Administration	14	\$1,912,120	-78%	21	\$5,809,185	490%	\$8,455,853	245%
Law	1	\$129,468	45%	1	\$261,551	102%	\$66,959	-58%
Architecture & Design	3	\$172,244	184%	4	\$145,796	2,816%	\$38,591	-37%
Nursing	9	\$5,562,844	12%	2	\$86,081	-56%	\$95,763	-15%
Social Work	8	\$1,915,942	-15%	24	\$6,767,881	-16%	\$3,501,367	-1%
Education, Health, & Human Sciences	58	\$23,898,431	35%	52	\$9,759,322	-20%	\$6,596,617	-13%
Communication & Information	8	\$11,987,813	751%	18	\$3,197,518	582%	\$595,153	7%
Research Centers	72	\$36,645,964	-30%	66	\$18,275,605	350%	\$10,819,970	-36%
Other	9	\$9,096,303	742%	7	\$766,020	-88%	\$1,978,770	32%
<b>Total</b>	<b>788</b>	<b>\$325,702,349</b>	<b>1%</b>	<b>769</b>	<b>\$96,782,565</b>	<b>54%</b>	<b>\$62,041,425</b>	<b>3%</b>

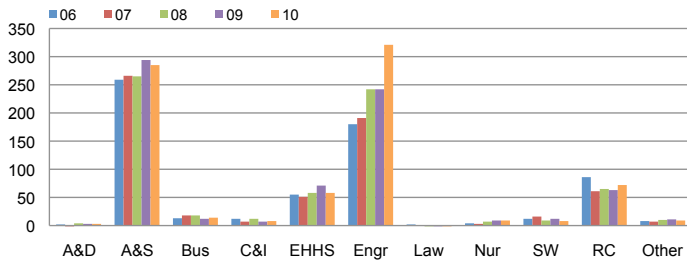
### TOP 20 AWARDS

Investigators (Primary PI First)	Departments, Centers, & Institutes	Project Title	Sponsor	Maximum Amount*
Ahern, Sean D.; Huang, Jian; Klasky, Scott A.	Joint Institute for Computational Sciences	ARRA: NCS Remote Data Analysis and Visualization Center	National Science Foundation	\$10,000,000
Moore, John R.	Construction Industry Research & Policy Center	Provide Services Supportive of the Wage and Hour Div. of the Employment Standards Adm.	US Dept. of Labor - Financial Services Center/OASAM	\$9,275,712
Miller, Alex; Barton, Rhonda W.; Riblett, John E.	Center for Executive Education	Continuous Process Improvement in Air Force Acquisition	Air Force	\$7,499,619
Glisson, Charles; Cheatham, Joanna; Dukes, Denzel; Green, Philip; Hemmelgarn, Anthony	Children's Mental Health Service Research Center	Testing an Organizational Implementation Strategy in Children's Mental Health	NIH - National Institute of Mental Health	\$3,170,520
Heilbronn, Lawrence; Counce, Robert; Dean, David; Nazarewicz, Witold; Papenbrock, Thomas	Nuclear Engineering	Nuclear Structure Theory in Energy Production	DOE - Idaho Operations Office	\$3,160,000
Becker, Jeffrey M.	Microbiology	Peptide-Cell Interactions in Saccharomyces cerevisiae	NIH - National Institute of General Medical Sciences	\$2,699,269
Zacharia, Thomas	Joint Institute for Computational Sciences	ARRA: Collaborative Research: An EPSCoR Desktop to Teragrid EcoSystem	National Science Foundation	\$2,675,331
Cole, Gregory Scott	Office of Research	ARRA: The Taj: A New Model for Global Federated Network Infrastructure for Science and Education	National Science Foundation	\$2,293,378
Campbell, Paul M.; Cheatham, Joanna; Cunningham, Mary C.; Cunningham, Maryanne Lynch	SWORPS	Child Care Assessment Supportive Services Program	TN Dept. of Human Services	\$2,270,000
Wodarski, John S.	Children's Mental Health Service Research Center	HIV/AIDS Primary Prevention Program with Caribbean Youth	Substance Abuse & Mental Health Services Adm (SAMSA)	\$2,240,730
Richards, Stephen H.; Flinchum, Deanna L.	Center for Transportation Research	University Transportation Center Program Southeastern Transportation Center Rebid	US Dept. of Transportation - Research and Innovative Tech.	\$2,085,000
Hayward, Jason Peter	Nuclear Engineering	ARI-MA Research Program in Exploitation of Time-Correlated Signatures and Directionality to Detect Shielded Highly-Enriched Uranium	National Science Foundation	\$1,995,713
Long, Vena M.	Education, Health & Human Sciences	Tennessee Governor's Academy	TN Dept. of Education	\$1,728,908
Miller, Terry L.	Civil & Environmental Engineering	ARRA: Proposal to Administer a TDEC Program to Provide Rebates to TN Trucking Cos to Install APU's	TN Dept. of Environment and Conservation	\$1,713,298
Zacharia, Thomas	Joint Institute for Computational Sciences	High Performance Computing System Acquisition: Towards a Petascale Computing Environment	National Science Foundation	\$1,687,748
Birdwell, John; Horn, Sally; Icove, David; Wang, Tse-Wei	Electrical Engineering & Computer Science	Similarity-Based Indexing and Search of Database for Correlation of Object Properties with Ref	United States Army Aviation and Missile Command	\$1,682,482
Kovatch, Patricia Anne; Zacharia, Thomas	Joint Institute for Computational Sciences	Enhancing Computational Science Opportunities on NSF's Kraken	National Science Foundation	\$1,680,000
Campbell, Paul; Black, Brenda; Cunningham, Maryanne	SWORPS	Families First	TN Dept. of Human Services	\$1,327,997
Everett, Jerry D.	Center for Transportation Research	Law Enforcement Liaison Program	TN Dept. of Transportation - Division of Planning	\$1,194,253
Andrews, Philip Lawrence	Joint Institute for Computational Sciences	DV.GFS, Global Wide Area File Systems	University of Chicago	\$1,133,305

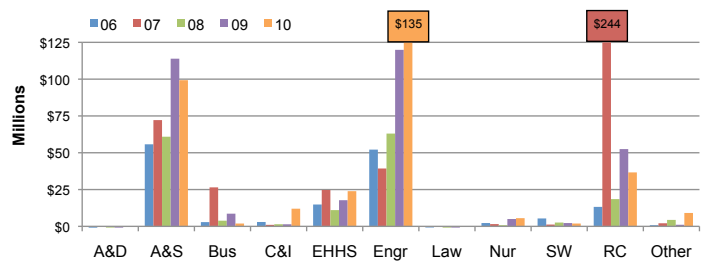
\*Anticipated Amount

# THE UNIVERSITY OF TENNESSEE, KNOXVILLE—OFFICE OF RESEARCH QUARTERLY REPORT FOR THE FIRST AND SECOND QUARTERS OF FISCAL YEAR 2010

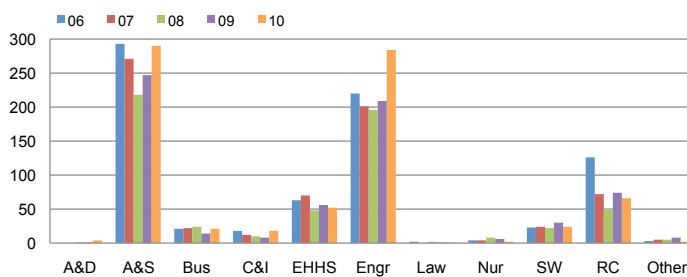
### NUMBER OF PROPOSALS SUBMITTED



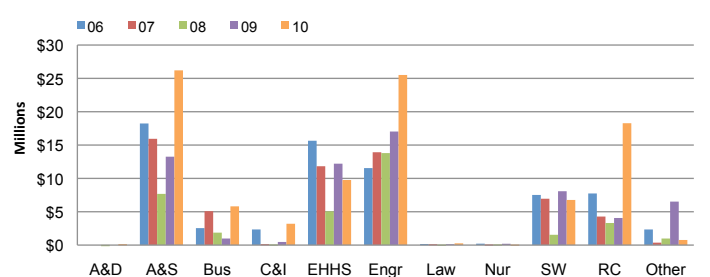
### PROPOSAL AMOUNT REQUESTED



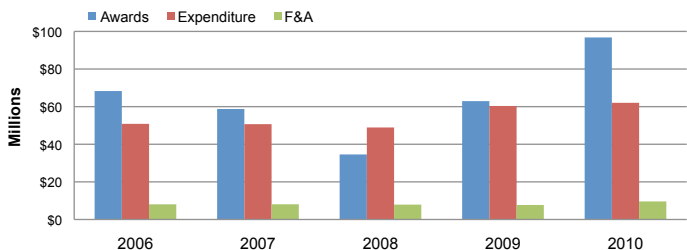
### AWARD COUNTS BY COLLEGE



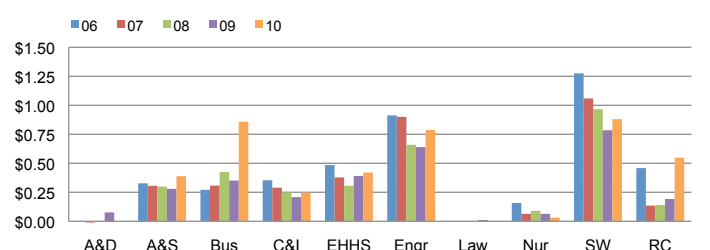
### AWARD AMOUNTS BY COLLEGE



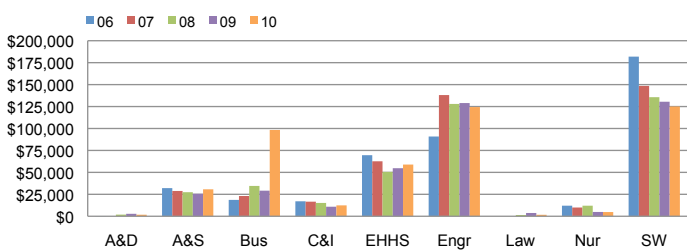
### CAMPUS TOTAL DOLLAR AMOUNT



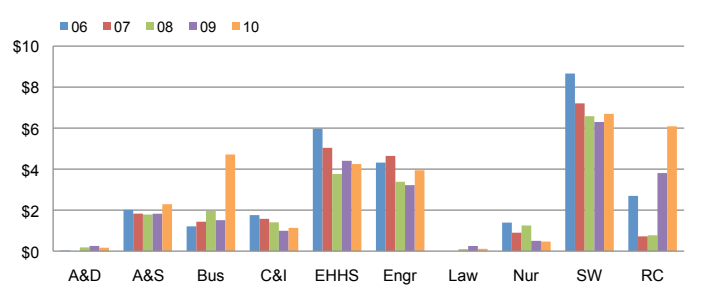
### F&A EARNED PER DOLLAR INVESTED



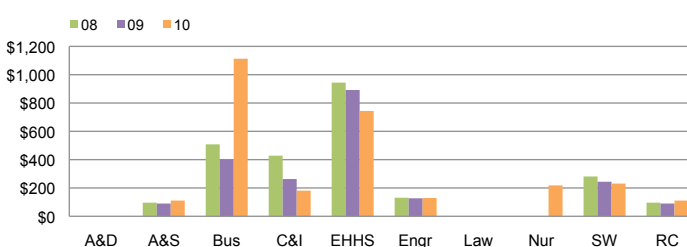
### SPONSORED EXPENDITURES PER STATE-SUPPORTED FACULTY



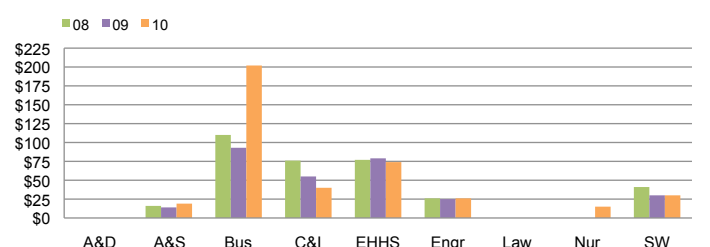
### SPONSORED EXPENDITURES PER DOLLAR INVESTED



### SPONSORED EXPENDITURES PER SQUARE FOOT



### OVERHEAD GENERATED PER SQUARE FOOT



## HOW QUARTERLY REPORT DATA ARE DERIVED

Quarterly reports are year-to-date comparisons. For example, the first quarter report is comprised of data for the first three months of each fiscal year presented while the second quarter report contains data for the first six months of each fiscal year, and so forth.

Data depicting colleges and major research centers are presented to show trends within each unit.

Proposal and award data are recorded in Coeus by the Office of Research.

Expenditure, F&A, University support, and faculty count data are taken from IRIS.

For more detailed information about the origins of this data, visit <http://research.utk.edu/reports>